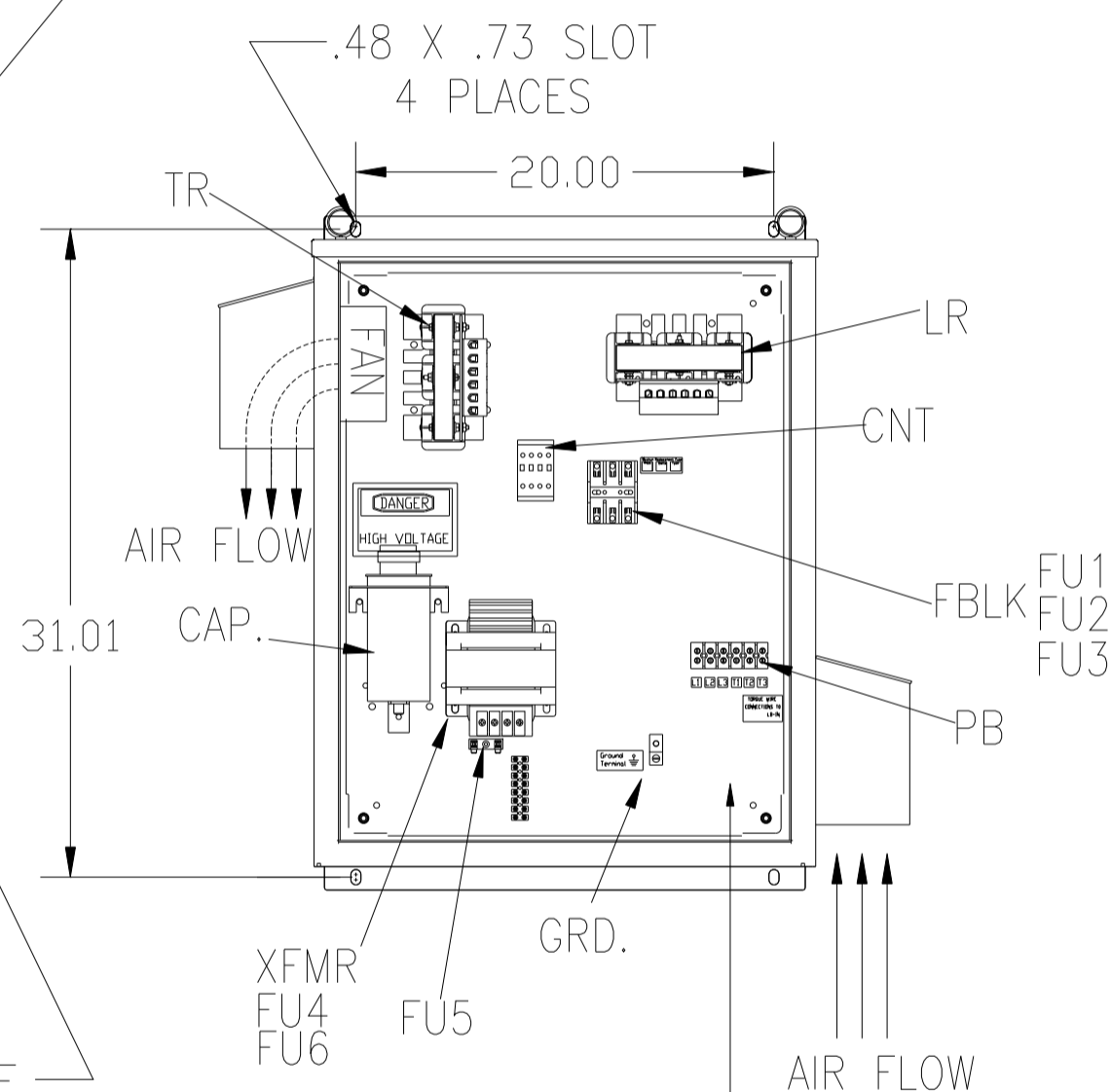
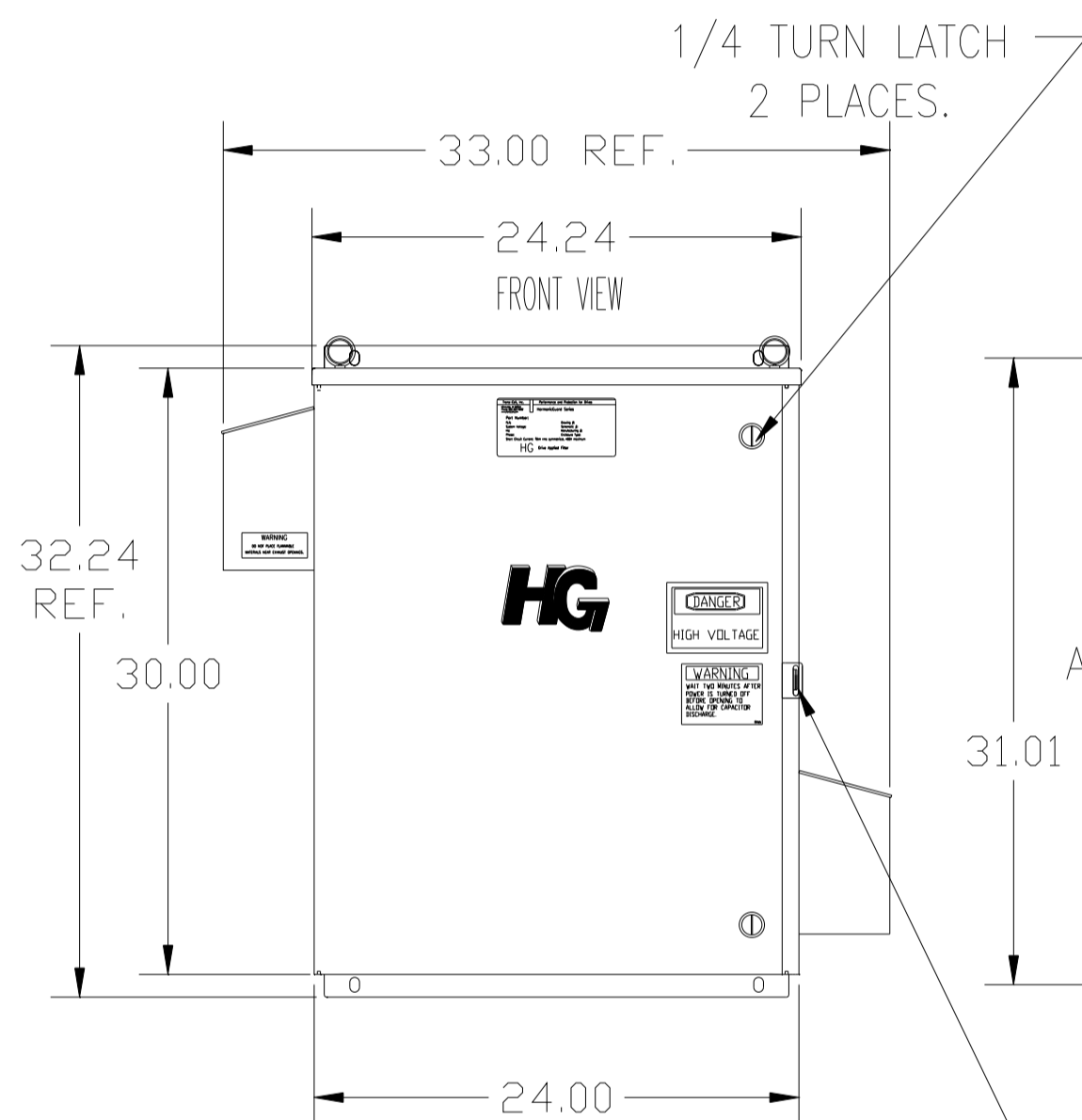
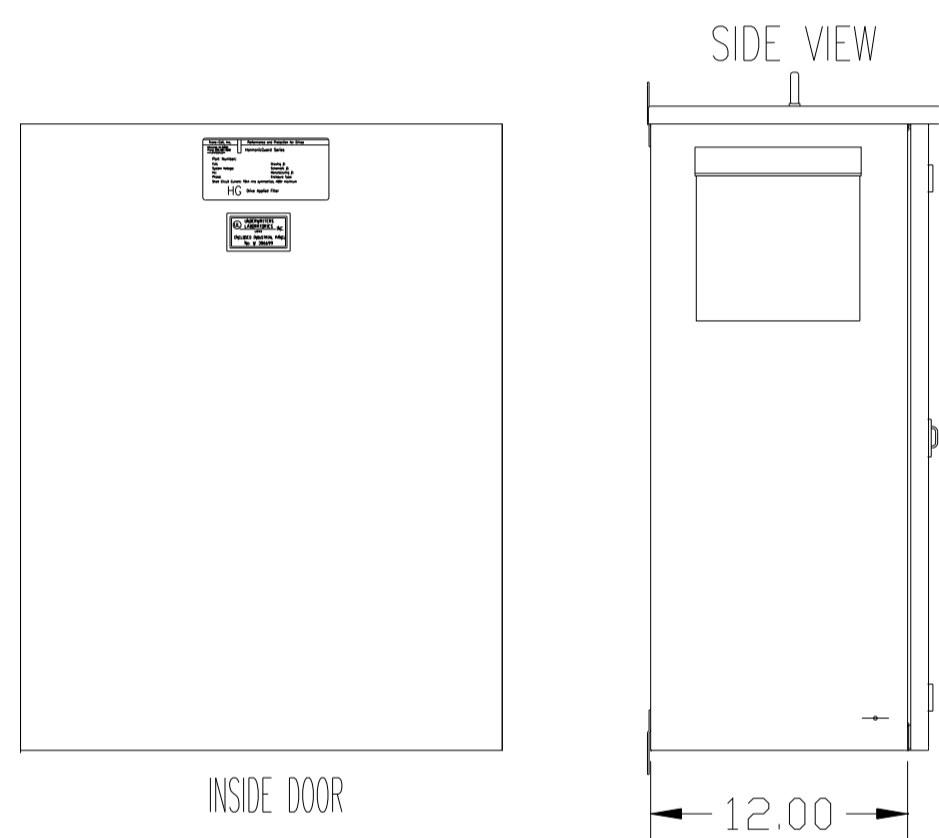
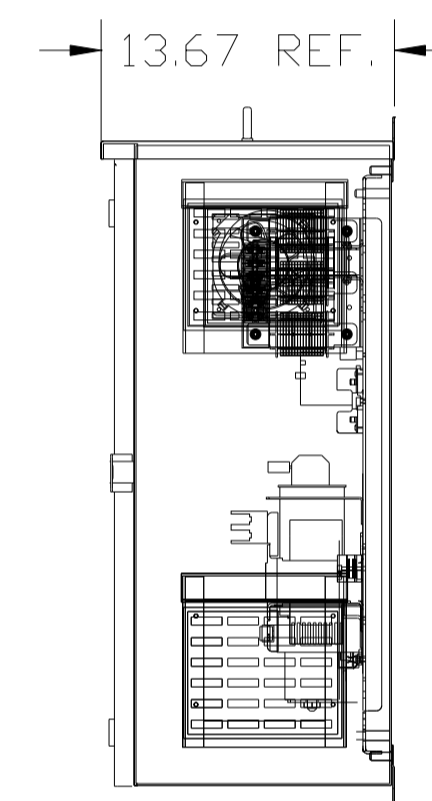
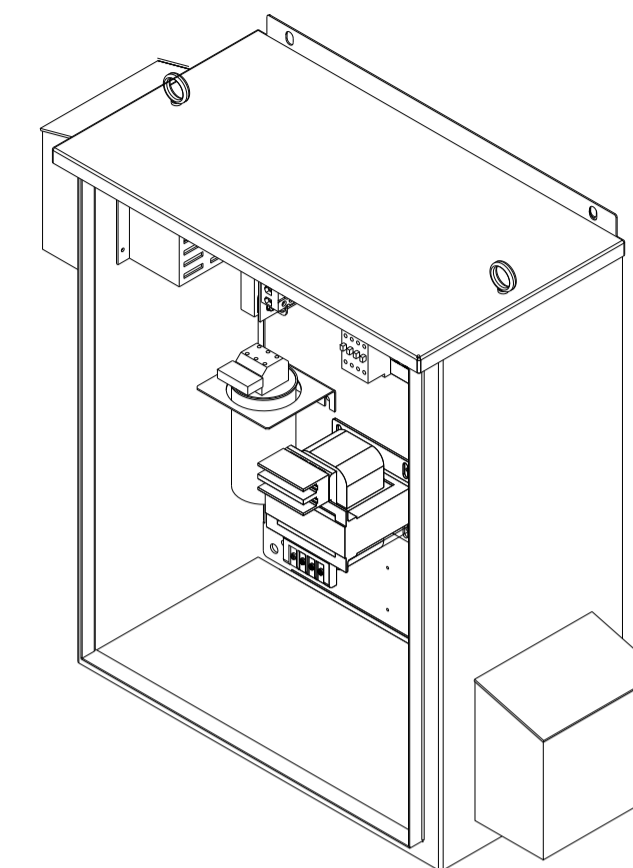
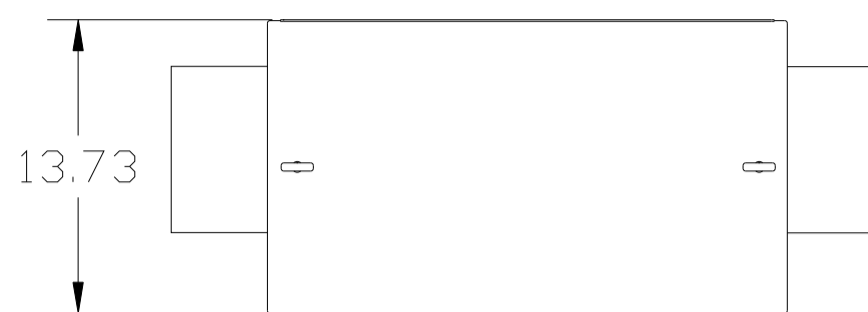


CUSTOMER IS RESPONSIBLE FOR INSTALLATION TO MEET ALL NATIONAL AND LOCAL ELECTRICAL CODES.

NOTE: USE ONLY HUBS OR FITTINGS THAT COMPLY WITH UL514B FOR TYPE 3R ENCLOSURES.

SEE DWG# 26752 FOR SCHEMATIC



SUGGESTED CUSTOMER WIRE ENTRY AND EXIT LOCATION

GROUND LUG:
WIRE RANGE-1/0 TO #14 AWG.
1/0 AWG thru 2 AWG 50 IN-LBS. MAX.
4 AWG thru 6 AWG 45 IN-LBS. MAX.
8 AWG 40 IN-LBS. MAX.
10 AWG thru 14 AWG 35 IN-LBS. MAX.

PB-POWER INPUT BLOCK:
WIRE RANGE-#18 TO #4 AWG.
TIGHTENING TORQUE 20 IN-LB.

UNIT SPECIFICATIONS:					
KVAR	HARMONIC	VOLT	HZ	PHASE	HP
3	5TH	480	60	3	7.5
ENCLOSURE		UL TYPE 3R			
COLOR		WHITE			
APPROX.WT. LBS.		106			

SYMBOL	TCI PART NUMBER
LR	KDRC1T
TR	KTR3A65HG
CAP. (3 KVAR)	27605
XFMR.	23896
Fu1, 2, 3	11262
Fu4,6	24009
Fu5	17567
CNT	12434

ALTERNATE	TCI PART NUMBER
CAP. (3 KVAR)	KCAP3A6A

NO	REVISION	DATE	BY	TOLERANCES (EXCEPT AS NOTED)
E	CHG TO ASC CAPS	3/11/13	DSW	DECIMAL
D	2707 CHG GRD. LUG	6/15/11	DSW	.XX ±.12
C	2702 RVSD FUSEBLK&FUSE	9/2/10	RJC	.XXX±.06
B	2684 12434 WAS ADD			FRACTIONAL ± 1/32
B	26739	5/27/10	DSW	ANGULAR ± 1/2°
A	2641 ADD EYEBOLTS	10/13/09	DSW	

TCI 7878 N. 86th STREET
MILWAUKEE, WI 53224

HG8AW03STC, 7.5HP
480/3/60 UL TYPE 3R

DRN. BY DSW DATE 8/25/08 DWG. NO. 103665DG
SCALE TO FIT APRVD. B SHT. 1 of 1