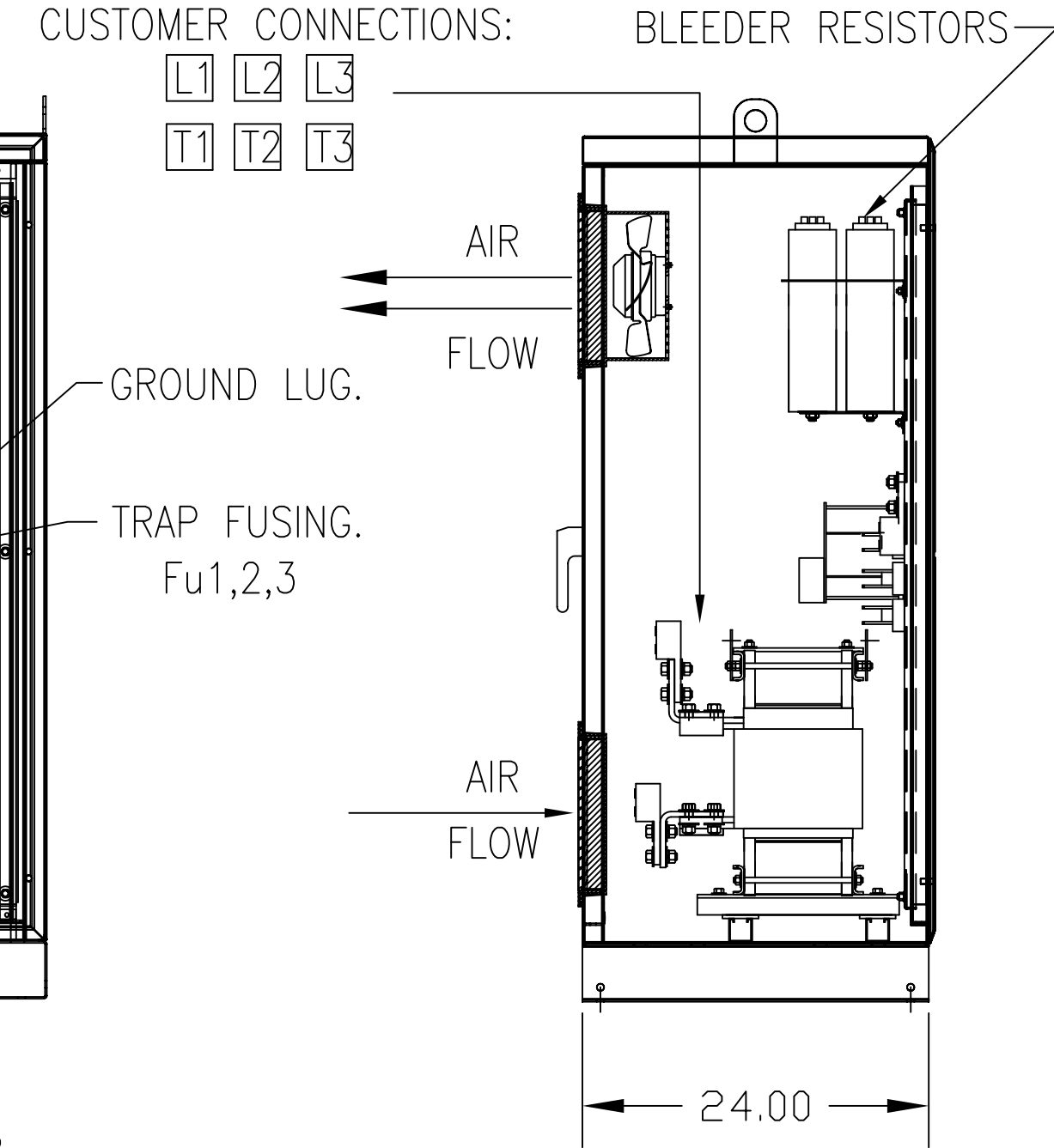
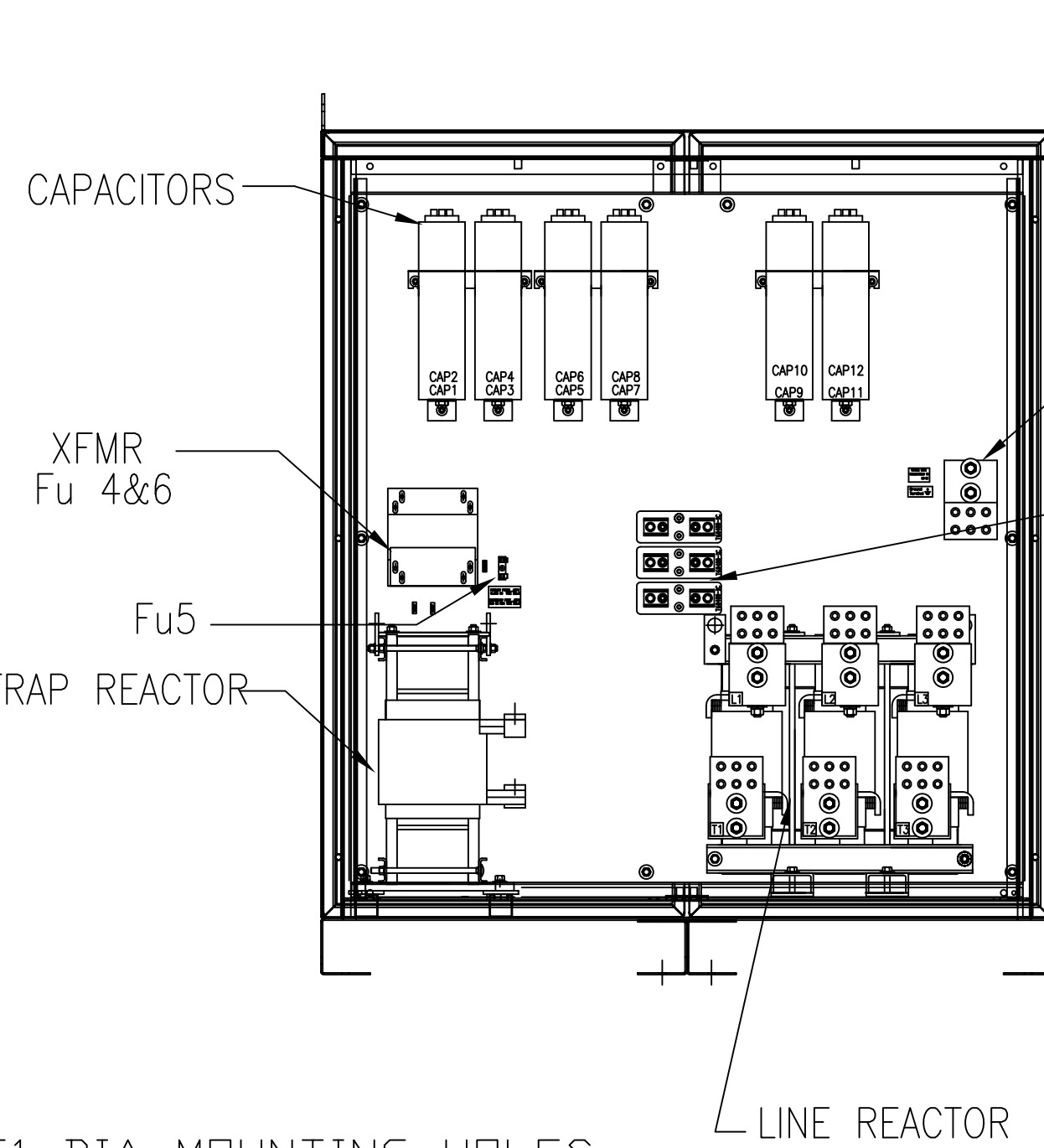
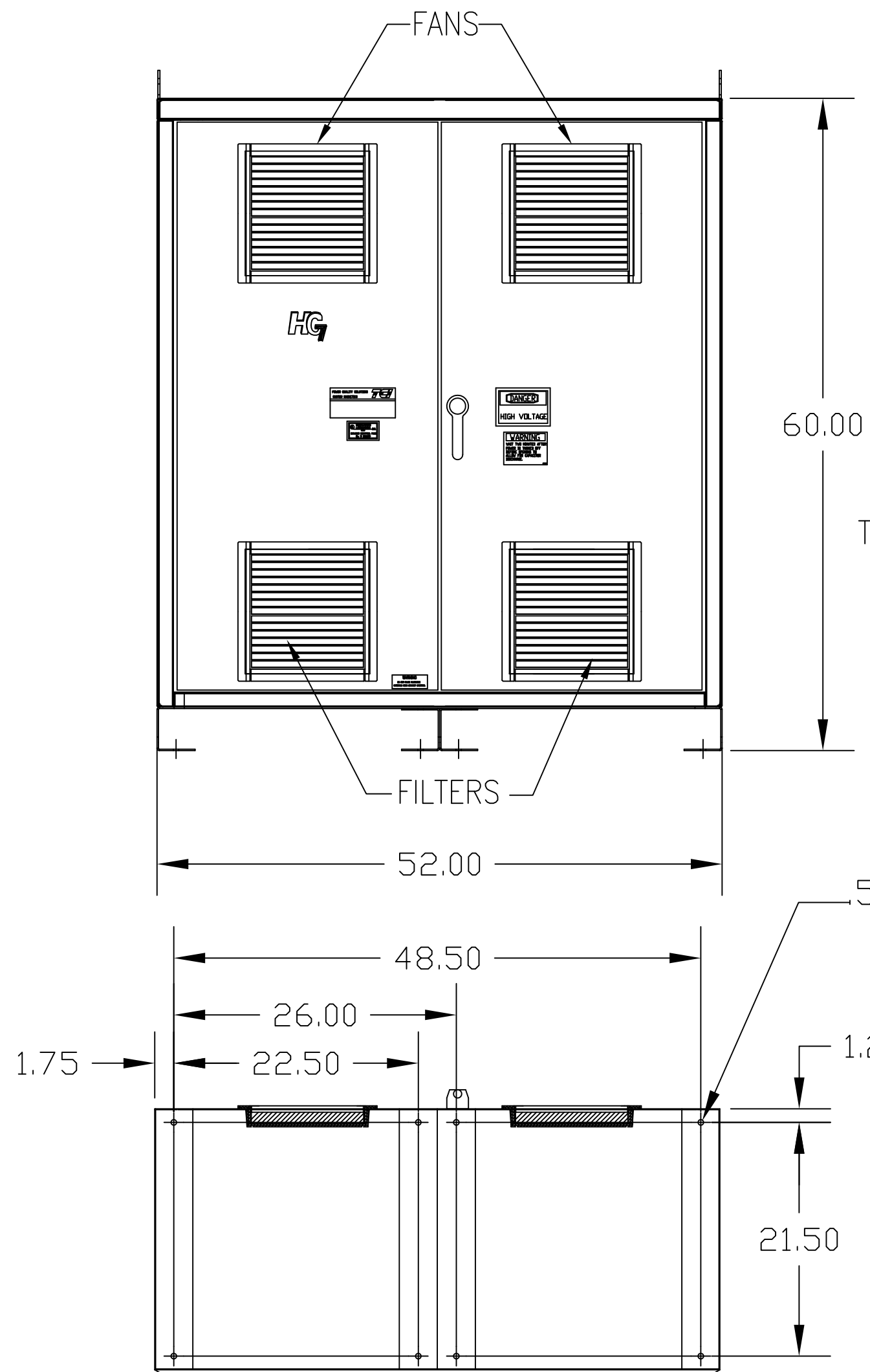


UNIT SPECIFICATIONS:						
KVAR	HARMONIC	VOLT	HZ	PHASE	HP	
240	5TH	600	60	3	800	
ENCLOSURE		NEMA 1				
APPROX.WT. LBS.		1600				

SYMBOL	TCI PART NUMBER
LR	KDRY44T
TR	KTR240C65HG
CAP1- 12 (20 KVAR)	KCAP20C6B
XFMR.	25292
Fu1a,2a,3a	12596
Fu4,6	24390
Fu5	23977



.51 DIA MOUNTING HOLES,
8 PLACES.

FOR SCHEMATIC SEE 25116

CUSTOMER IS RESPONSIBLE FOR INSTALLATION TO
MEET ALL NATIONAL AND LOCAL ELECTRICAL CODES

CUSTOMER CONNECTIONS:
WIRE RANGE-THREE 600MCM-2
TIGHTENING TORQUE 375 IN-LB.

GROUND LUG:
WIRE RANGE-THREE 600MCM-2
TIGHTENING TORQUE 375 IN-LB.

TCI, LLC CLAIMS PROPRIETARY RIGHTS IN THE MATERIAL HEREIN DISCLOSED. IT IS SUPPLIED WITHOUT PREDJUDICE TO ANY PATENT RIGHTS OF TCI AND MAY NOT BE REPRODUCED OR USED TO MANUFACTURE ANYTHING SHOWN THEREIN WITHOUT WRITTEN PERMISSION FROM TCI.				TOLERANCES (EXCEPT AS NOTED): DECIMAL	W132 N10611 Grant Drive Germantown, WI 53022	
				.XX ±.03 .XXX±.01		
	B	2786 REMOVE COLOR	11/14/11	DSW	FRACTIONAL ± 1/32	HG800CW01ST, HG7 STANDARD 800HP, 600/3/60, TYPE 1
	A	2516, CAP WAS 18612	9/30/07	RJC	ANGULAR ± 1/2°	
NO	REVISION	DATE	BY	SCALE TO FIT	DRN. BY DSW DATE TO FIT SIZE C DVG. NO. 102705DG SHT.1 OF 1	