

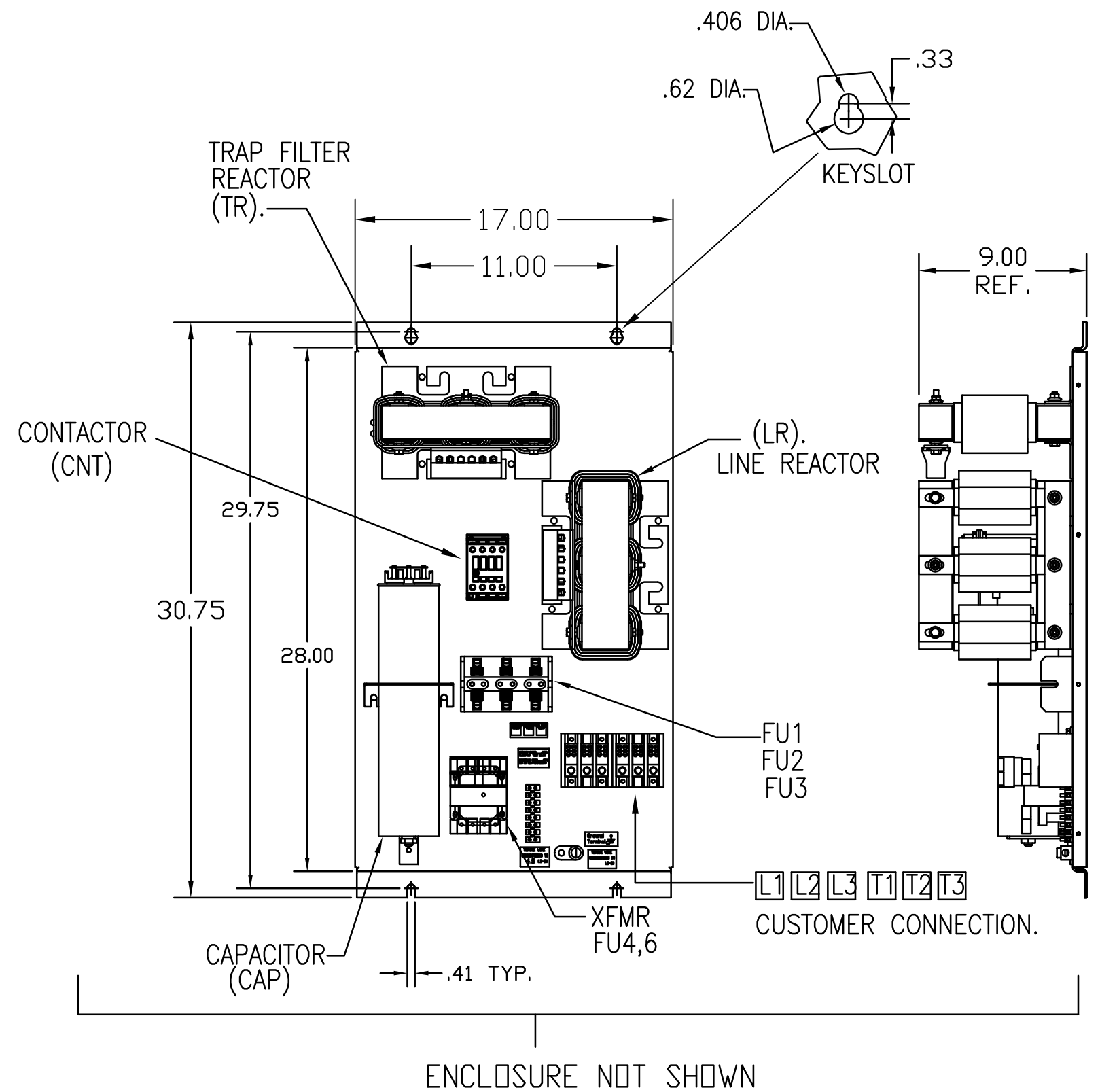
PB-POWER INPUT BLOCK:
 2/0 AWG thru 6 AWG 120 IN-LBS. MAX.
 8 AWG 40 IN-LBS. MAX.
 10 AWG thru 14 AWG 35 IN-LBS. MAX.

GROUND LUG
 WIRE RANGE:
 #1/0-#14 AWG
 200 IN-LB TORQUE

HATCHED AREA(S) ARE SUGGESTED
 CUSTOMER WIRE ENTRANCE AND EXIT LOCATIONS
 (BOTTOM ENTRANCE ALTERNATE-CONSULT TCI)

UNIT SPECIFICATIONS:					
KVAR HARMONIC	VOLT	HZ	PHASE	HP	
20	5TH	600	60	3	60
ENCLOSURE	NEMA 1				
OPTIONS	WITH CONTACTOR				
APPROX.WT. LBS.	195				

SYMBOL	HG60CW01STC
LR	X
TR	X
CAP	X
XFMR.	X
Fu1, 2, 3	X
Fu4,6	X
CNT	X



SEE DWG# 26878 FOR SCHEMATIC

CUSTOMER IS RESPONSIBLE FOR INSTALLATION
 TO MEET ALL NATIONAL AND LOCAL ELECTRICAL CODES.

NO	REVISION	DATE	BY	TOLERANCES (EXCEPT AS NOTED) DECIMAL	ANGULAR	SCALE	DRN. BY	DATE	APRVD.	DWG. NO.	SHT. 1 OF 1
C	3267 CNT CHANGE	10/21/15	BWM	.XX ± .03						103552DG	
B	COLOR WAS BLACK			.XXX ± .01							
	REVISED UL SHIELD	2/17/2012	RJC	FRACTIONAL ± 1/32							
A	UPDATE LAYOUT	8/30/2010	DSW	ANGULAR ± 1/2°							

TCI W132 N10611 GRANT DRIVE
 GERMANTOWN, WI. 53022

HG60CW01STC 60HP
 600/3/60, ENCLOSED, WITH CNT

DRN. BY DSW DATE 11/12/08
 SCALE TO FIT APRVD. C