

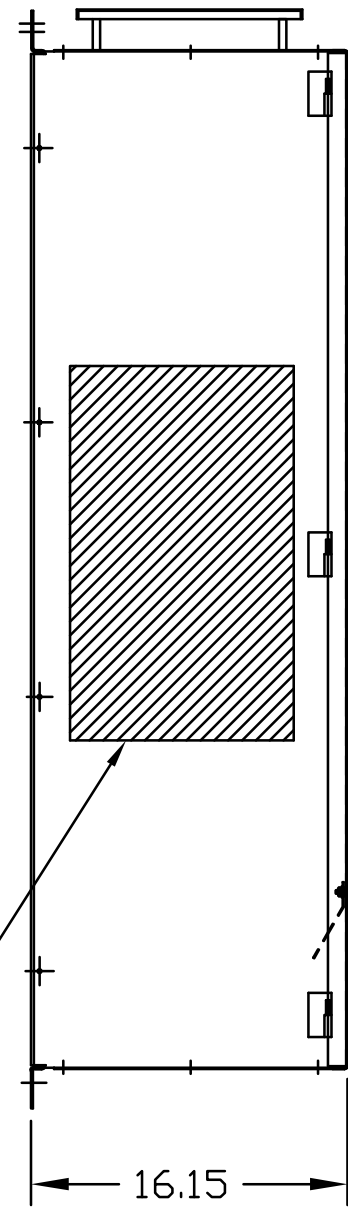
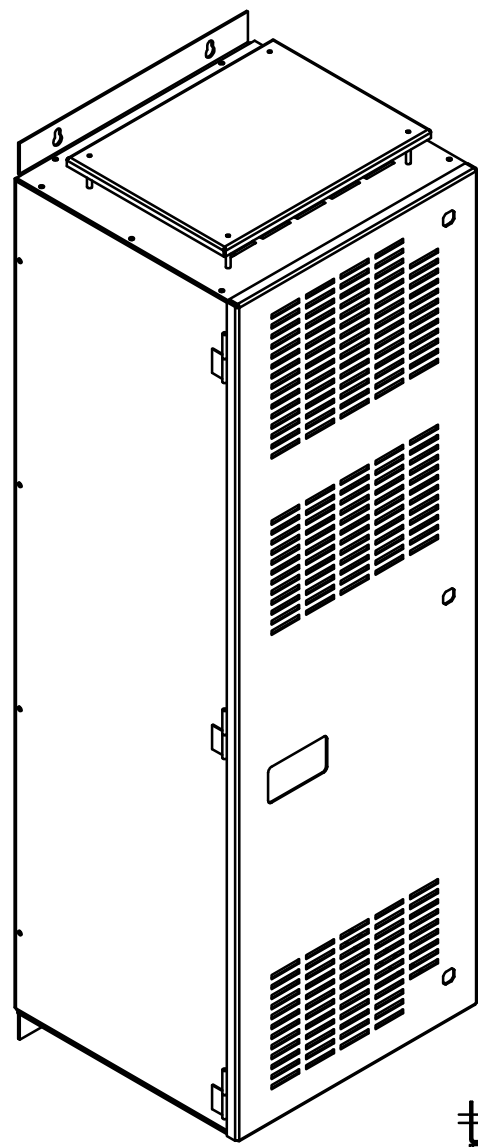
SEE 26824 FOR SCHEMATIC

CUSTOMER CONNECTIONS:
WIRE RANGE-250MCM-6
TIGHTENING TORQUE 275 IN-LB.

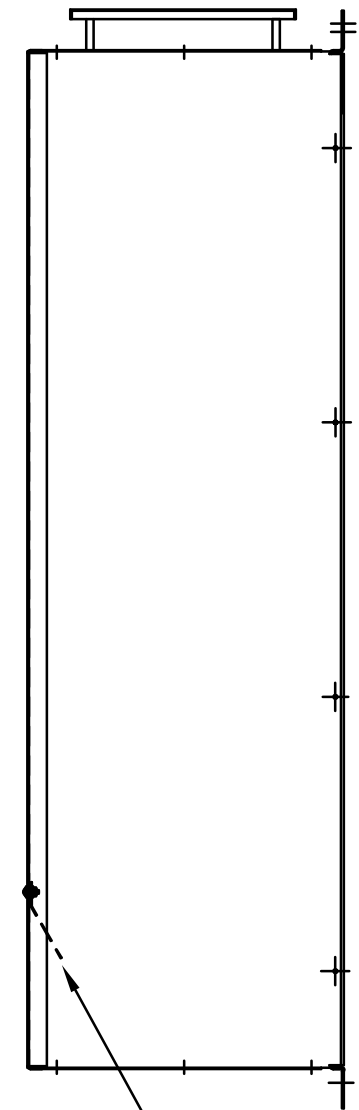
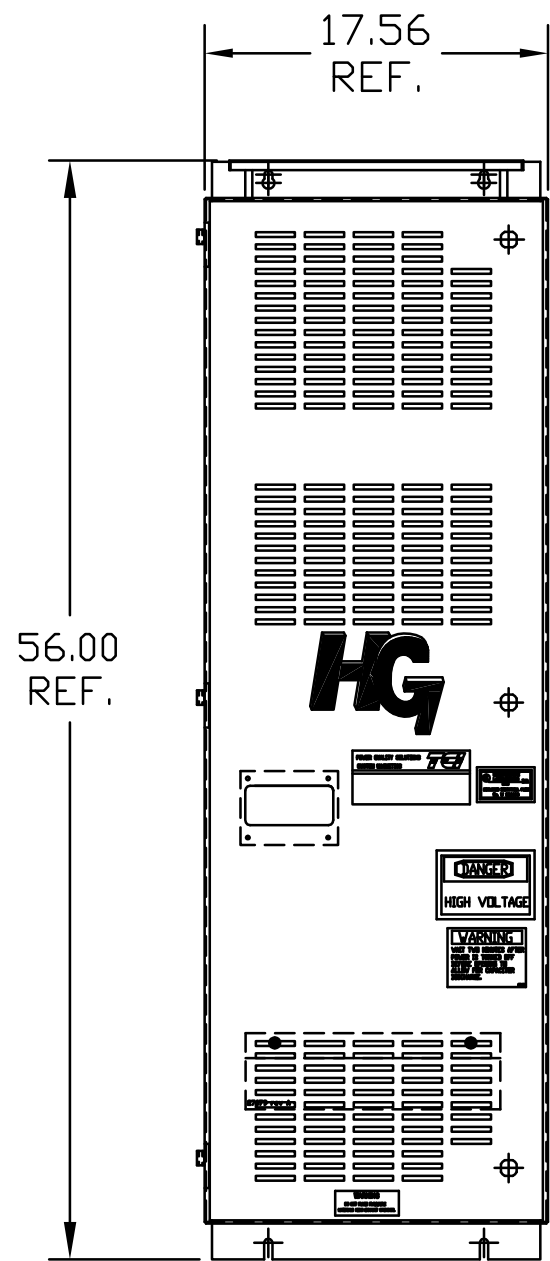
GROUND LUG:
WIRE RANGE-250MCM-6
TIGHTENING TORQUE 275 IN-LB.

UNIT SPECIFICATIONS:					
KVAR	HARMONIC	VOLT	HZ	PHASE	HP
20	5TH	240	60	3	60
ENCLOSURE		NEMA 1			
		WITH CONTACTOR			
APPROX.WT. LBS.		228			

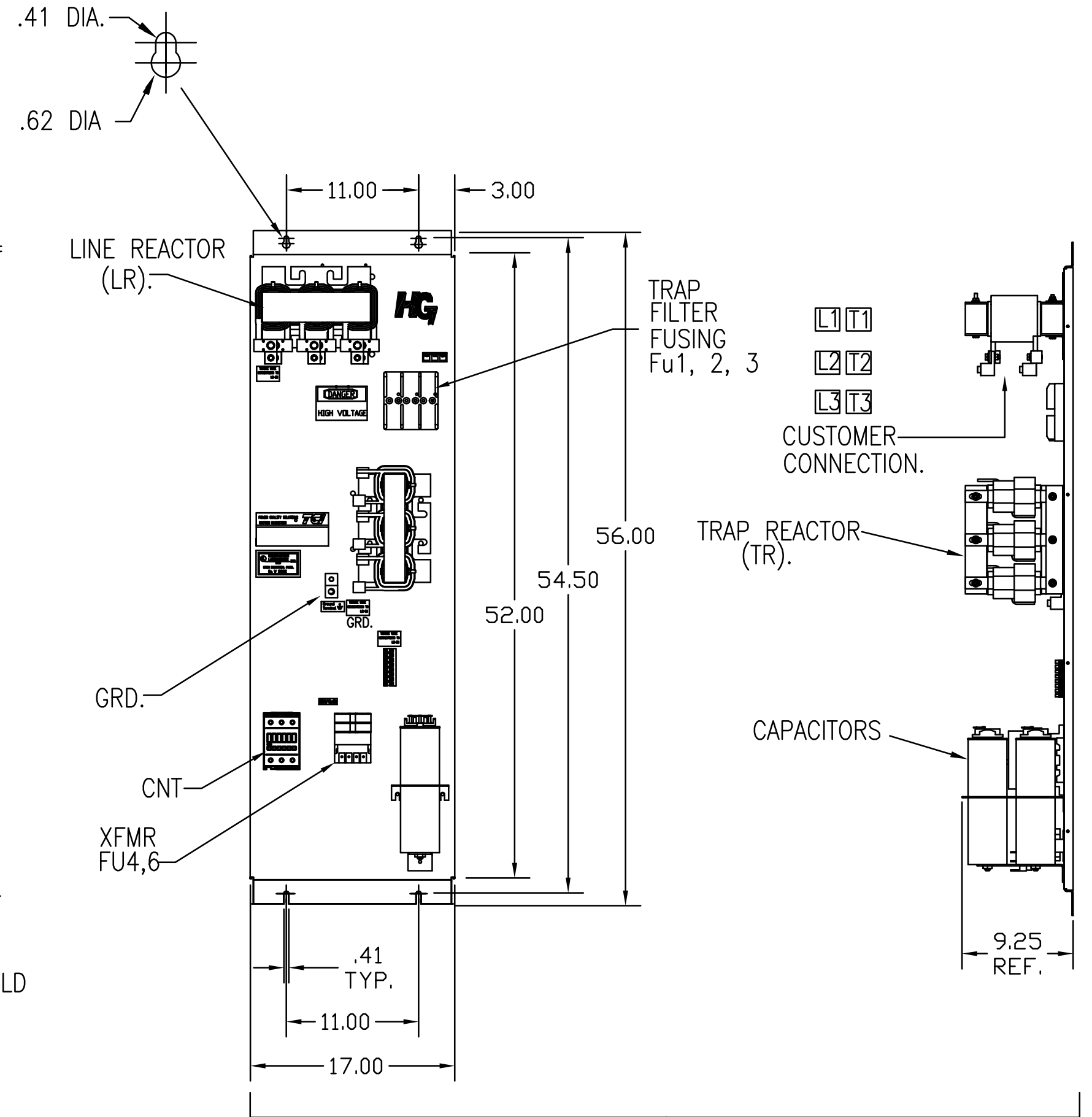
HG60BW01STC	
LR	X
TR	X
CAPS	X
XFMR.	X
Fu1a;2a;3a	X
Fu4,6	X
CNT	X



HATCHED AREA(S)
ARE SUGGESTED
CUSTOMER INPUT AND
OUTPUT WIRE LOCATIONS



UL SHIELD



ENCLOSURE NOT SHOWN

CUSTOMER IS RESPONSIBLE FOR INSTALLATION
TO MEET ALL NATIONAL AND LOCAL ELECTRICAL CODES.

				TOLERANCES (EXCEPT AS NOTED)		TCI W132 N10611 GRANT DRIVE GERMANTOWN, WI. 53022		
				DECIMAL		HG60BW01STC, 60HP 240/3/60, ENCL, WITH CNT		
				.XX ± .03				
				.XXX ± .01				
△	3267 CNT CHANGE	1/15/16	BWM	FRACTIONAL		DRN. BY	DATE	DWG. NO.
○	2702 RVSD UL SHIELD	1/30/12	RJC	± 1/32		DSW	10/21/08	103596DG
NO	REVISION	DATE	BY	ANGULAR	± 1/2°	SCALE	APRVD.	SHT.1 OF1
						TO FIT		