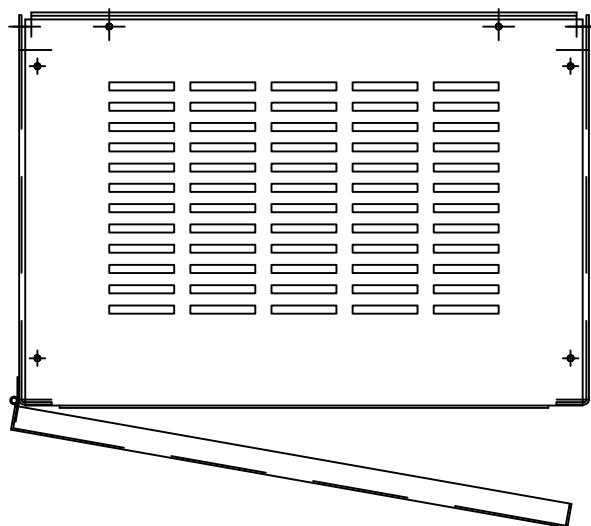
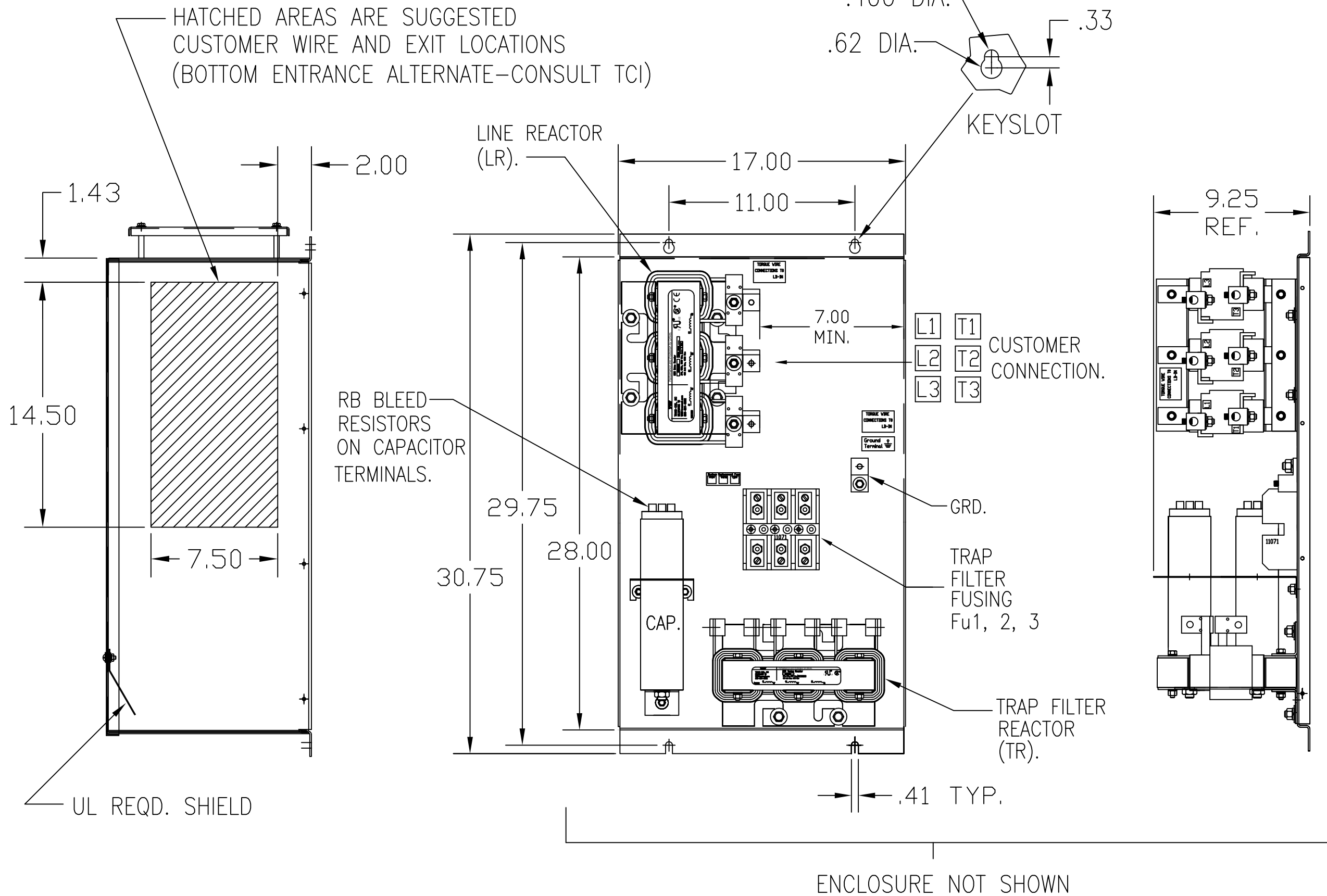
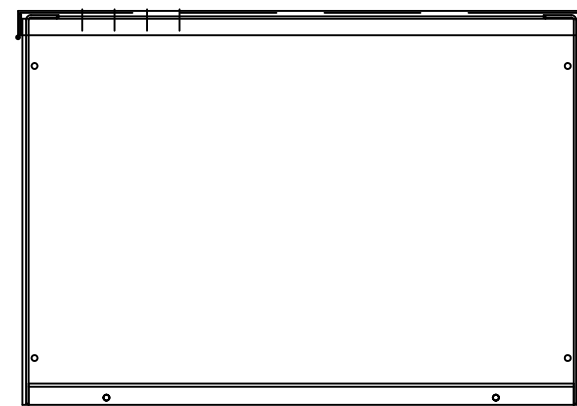
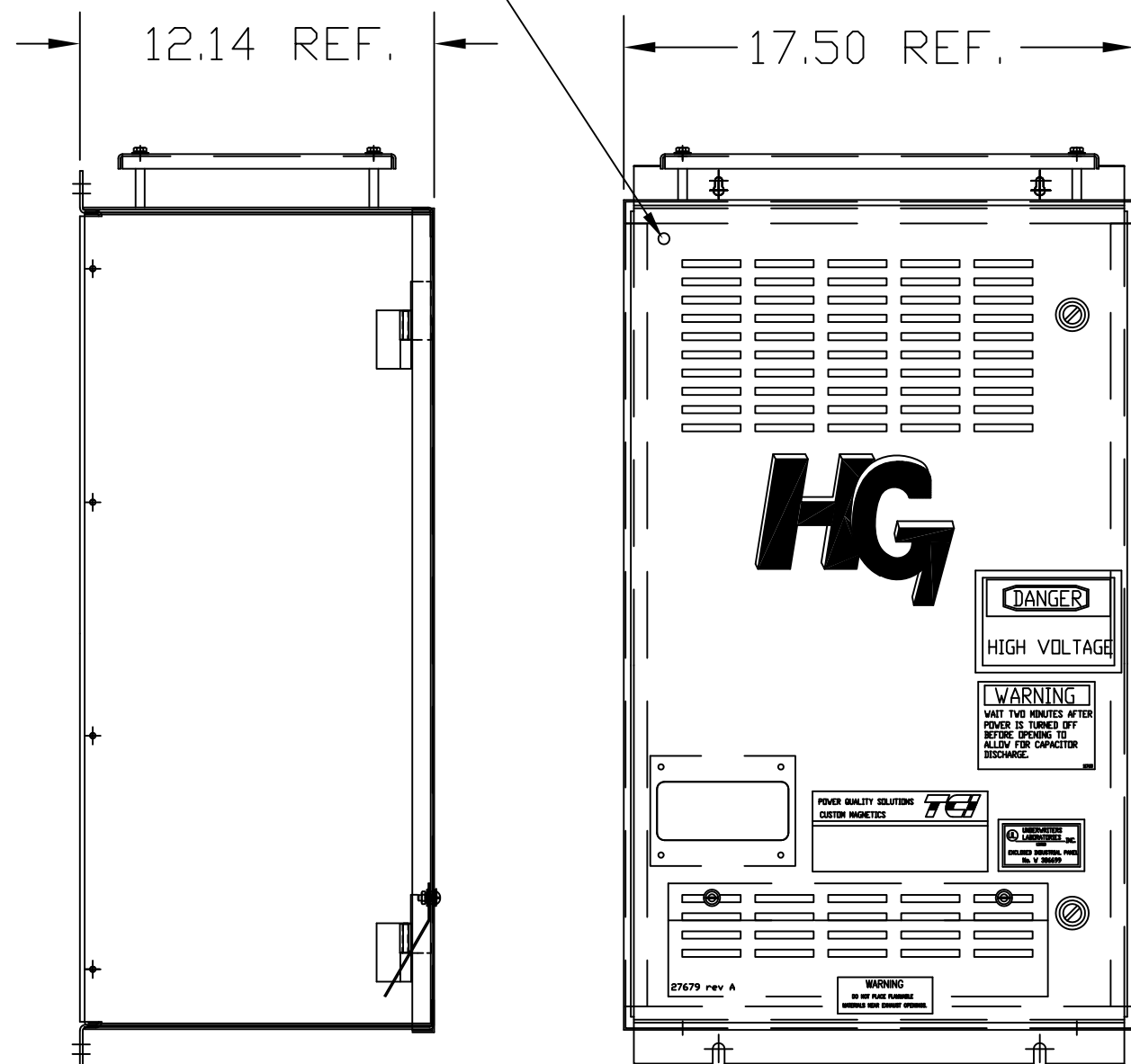


UNIT SPECIFICATIONS:					
KVAR	HARMONIC	VOLT	HZ	PHASE	HP
20	5TH	240	60	3	60
ENCLOSURE		NEMA 1			
APPROX.WT. LBS.		200			

SYMBOL	TCI PART NUMBER	
LR	KDRG22T	
TR	KTR20B65HG	
CAP1, 2	10 KVAR	KCAP10B6B
Fu1, 2, 3	15740	



DOOR GRD.  
STRAP



CUSTOMER CONNECTIONS:  
WIRE RANGE-250MCM-6  
TIGHTENING TORQUE 275 IN-LB.

GROUND LUG:  
WIRE RANGE-250MCM-6  
TIGHTENING TORQUE 275 IN-LB.

FOR SCHEMATIC SEE 25179  
CUSTOMER IS RESPONSIBLE FOR INSTALLATION  
TO MEET ALL NATIONAL AND LOCAL ELECTRICAL CODES.

TCI, LLC CLAIMS PROPRIETARY RIGHTS IN THE MATERIAL HEREIN DISCLOSED. IT IS SUPPLIED WITHOUT PREJUDICE TO ANY PATENT RIGHTS OF TCI AND MAY NOT BE REPRODUCED OR USED TO MANUFACTURE ANYTHING SHOWN THEREIN WITHOUT WRITTEN PERMISSION FROM TCI.				TOLERANCES (EXCEPT AS NOTED): DECIMAL	W132 N10611 Grant Drive Germantown, WI 53022 <b>HG60BW01ST, HG7 STANDARD</b> <b>60HP, 240/3/60, TYPE 1</b> DRN. BY DSW DATE 4/22/05 DWG. NO. 102519DG SCALE TO FIT SIZE C SHT.1 OF 1	
	B	2702 RVSD UL SHIELD		.XX ±.03 .XXX ±.01		
		COLOR WAS BLACK	1/18/11	RJC		FRACTIONAL ± 1/32
	A	2516, CPA WAS 17813	9/30/06	RJC		ANGULAR ± 1/2°
NO	REVISION	DATE	BY			