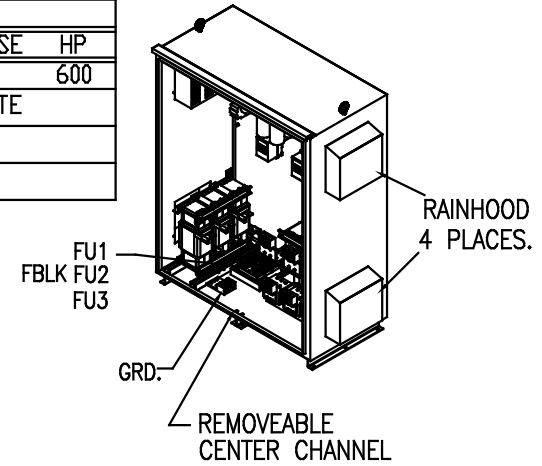
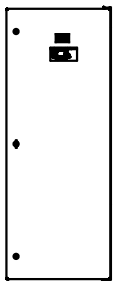


SEE DWG# 26964-1 FOR SCHEMATIC
 NOTE: USE ONLY HUBS OR FITTINGS THAT COMPLY WITH UL514B FOR TYPE 3R ENCLOSURES.
 CUSTOMER IS RESPONSIBLE FOR INSTALLATION TO MEET ALL NATIONAL AND LOCAL ELECTRICAL CODES.

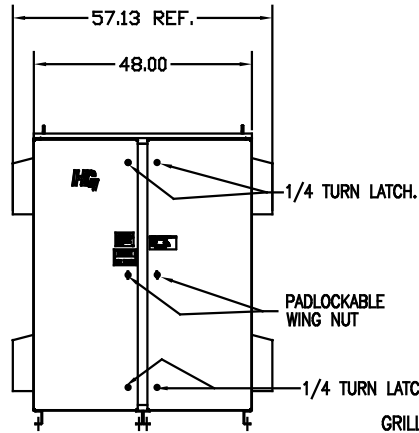
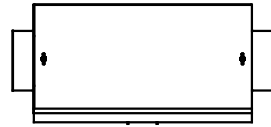
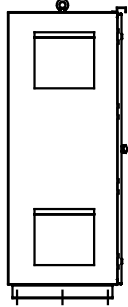
| UNIT SPECIFICATIONS: | | | | | |
|----------------------|----------|-----------------------|----|-------|-----|
| KVAR | HARMONIC | VOLT | HZ | PHASE | HP |
| 180 | 5TH | 600 | 60 | 3 | 600 |
| ENCLOSURE | | TYPE 3R- COLOR, WHITE | | | |
| FEATURES | | CONTACTOR | | | |
| APPROX.WT. LBS | | 1191 | | | |



INSIDE DOOR

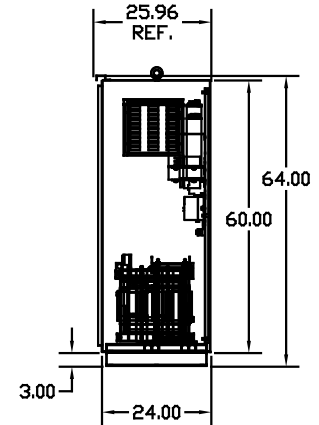
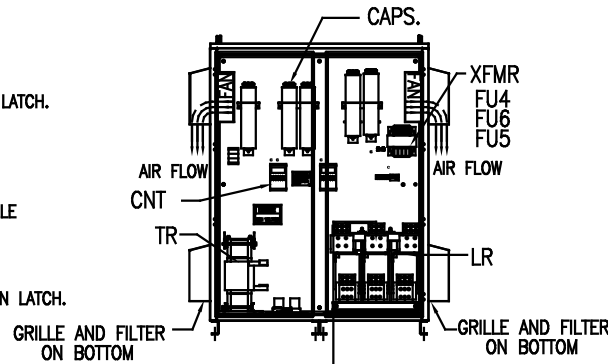


SIDE VIEW



FRONT VIEW WITH DOORS.

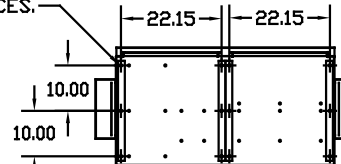
FRONT VIEW WITHOUT DOORS



SIDE VIEW

L1 L2 L3 T1 T2 T3
 SUGGESTED CUSTOMER WIRE ENTRY AND EXIT LOCATION

.50 DIA HOLES
 12 PLACES.



BOTTOM VIEW

GROUND LUG:
 WIRE RANGE-TWO 600MCM-2
 TIGHTENING TORQUE 500 IN-LB.

CUSTOMER INPUT/OUTPUT CONNECTIONS:
 WIRE RANGE-TWO 600MCM-2
 TIGHTENING TORQUE 500 IN-LB.

| SYMBOL | TCI PART NUMBER |
|---------------------|-----------------|
| LR | KDRY42T |
| TR | KTR180C65HG |
| (20 KVAR) 9 PLACES. | KCAP20C6B |
| XFMR. | 24389 |
| Fu1,2,3 | 13232 |
| Fu4,6 | 24390 |
| Fu5 | 23977 |
| CNT 2 PLACES. | 19246 |
| CNT 1 PLACE. | 25315 |

| NO | REVISION | DATE | BY | TOLERANCES EXCEPT AS NOTED: DECIMAL .XX ±.12 .XXX±.06 FRACTIONAL ± 1/32 MILLAR ± 1/2" | SCALE TO FIT | DATE 02/26/09 | DATE 10/31/09 | DATE 10/31/09 |
|----|----------|------|----|--|--------------|---------------|---------------|---------------|
| | | | | | | | | |

TCI 7878 N. 86th STREET MILWAUKEE, WI 53224

HG600CW03STC, 600HP
 600/3/60 UL TYPE 3R

DESIGNED BY DSW DRAWN BY JAWELAR CHECKED BY D DATE 02/26/09 DATE 10/31/09 DATE 10/31/09
 SCALE TO FIT

SHT. 1 OF 1