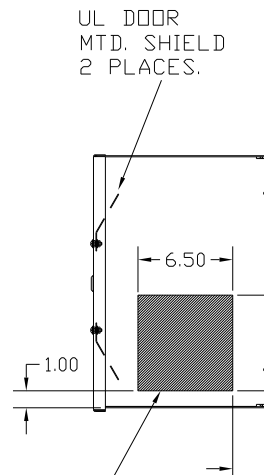
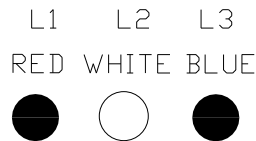
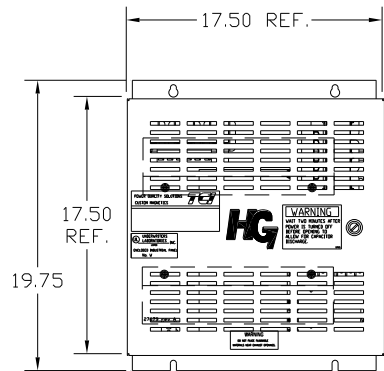
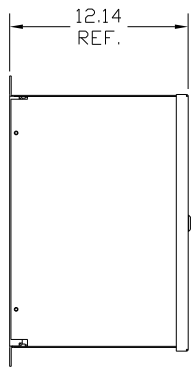


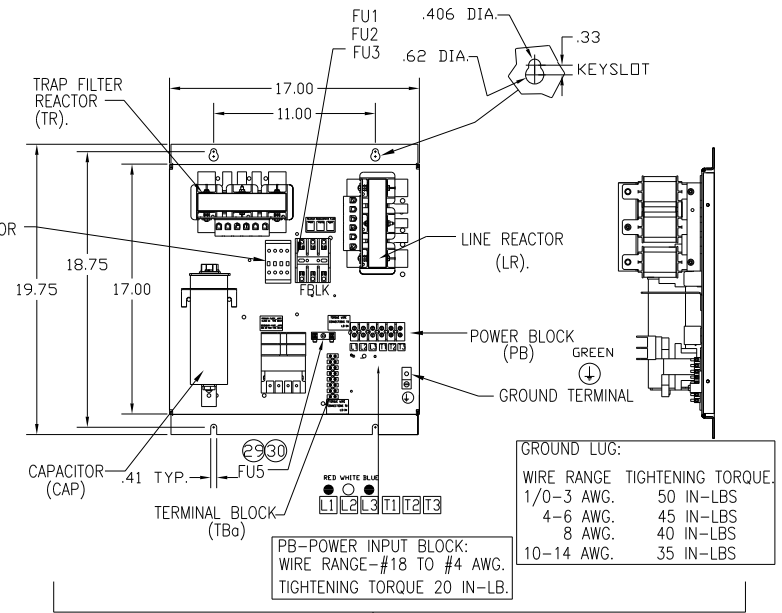
UNIT SPECIFICATIONS:					
KW	HARMONIC	VOLT	HZ	PHASE	FLA
5.5	5TH	400	50	3	12
ENCLOSURE		NEMA 1			
APPROX.WT. LBS.		68			

SYMBOL	TCI PART NUMBER
LR	KDRC31T
TR	KTR2L55HG
CAP, 1.. (5 KVAR)	KCAP5A6A
XFMR.	24385
Fu1, 2, 3	23407
Fu4,6	13180
Fu5	13364
CNT	12434

SEE DWG# 27703 FOR SCHEMATIC



HATCHED AREAS ARE SUGGESTED CUSTOMER WIRE AND EXIT LOCATIONS (BOTTOM ENTRANCE ALTERNATE-CONSULT TCI)



ENCLOSURE NOT SHOWN

CUSTOMER IS RESPONSIBLE FOR INSTALLATION TO MEET ALL NATIONAL AND LOCAL ELECTRICAL CODES.

				TOLERANCES (EXCEPT AS NOTED):	7878 N. 86th STREET MILWAUKEE, WI 53224 HG5LW01STC, 5.5KW 400/3/50, ENCLOSED.
				DECIMAL	
				XX ± .03 XXX ± .01	
				FRACTIONAL ± 1/32	
A	AS BUILT	5/12/11	DSW	ANGULAR ± 1/2°	DRN. BY DSW DATE 5/12/11 DWG. NO. 104665DG
NO	REVISION	DATE	BY		SCALE TO FIT APRVD C