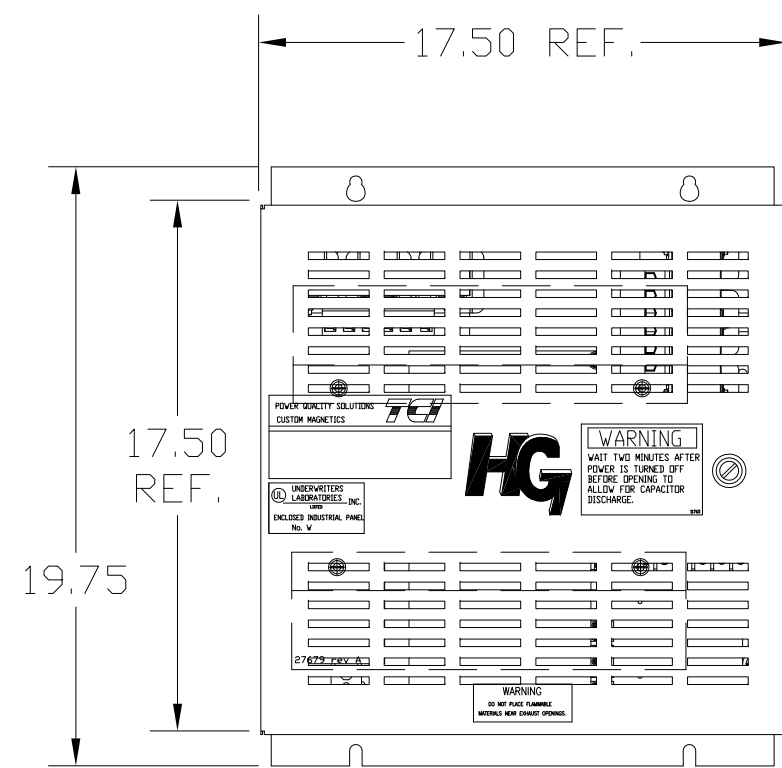
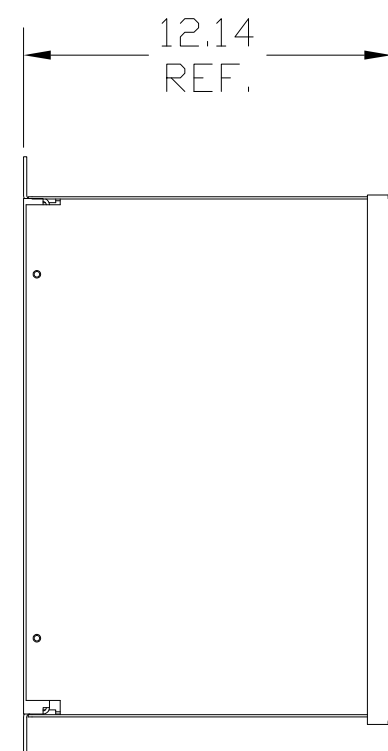
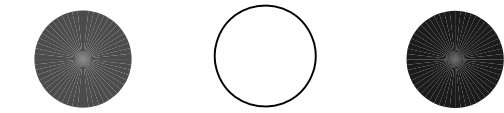


UNIT SPECIFICATIONS:					
KW	HARMONIC	VOLT	HZ	PHASE	FLA
5.5	5TH	400	50	3	12
ENCLOSURE		NEMA 1			
APPROX.WT. LBS.		63			

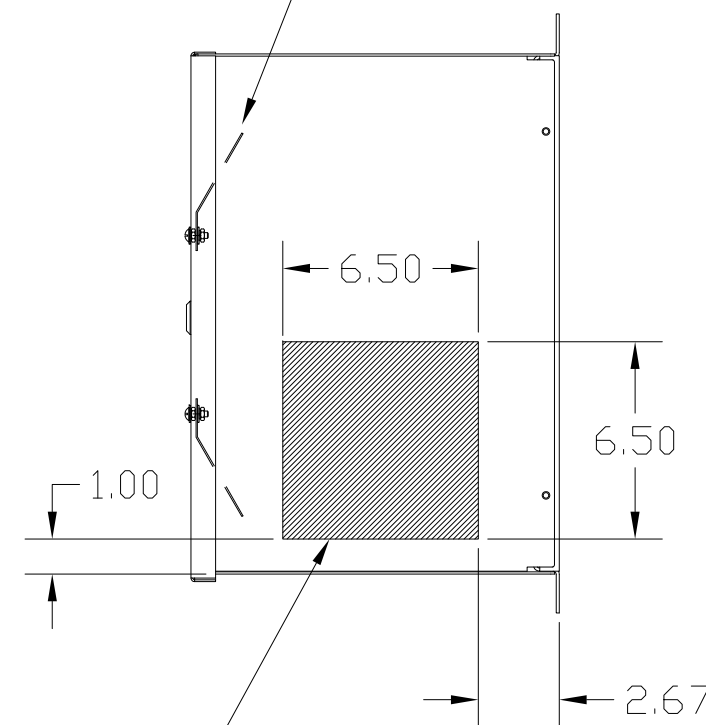
SYMBOL	TCI PART NUMBER
LR	KDRC31T
TR	KTR2L55HG
CAP1. (5 KVAR)	KCAP5A6A
Fu1, 2, 3	23407

SEE DWG# 27709 FOR SCHEMATIC

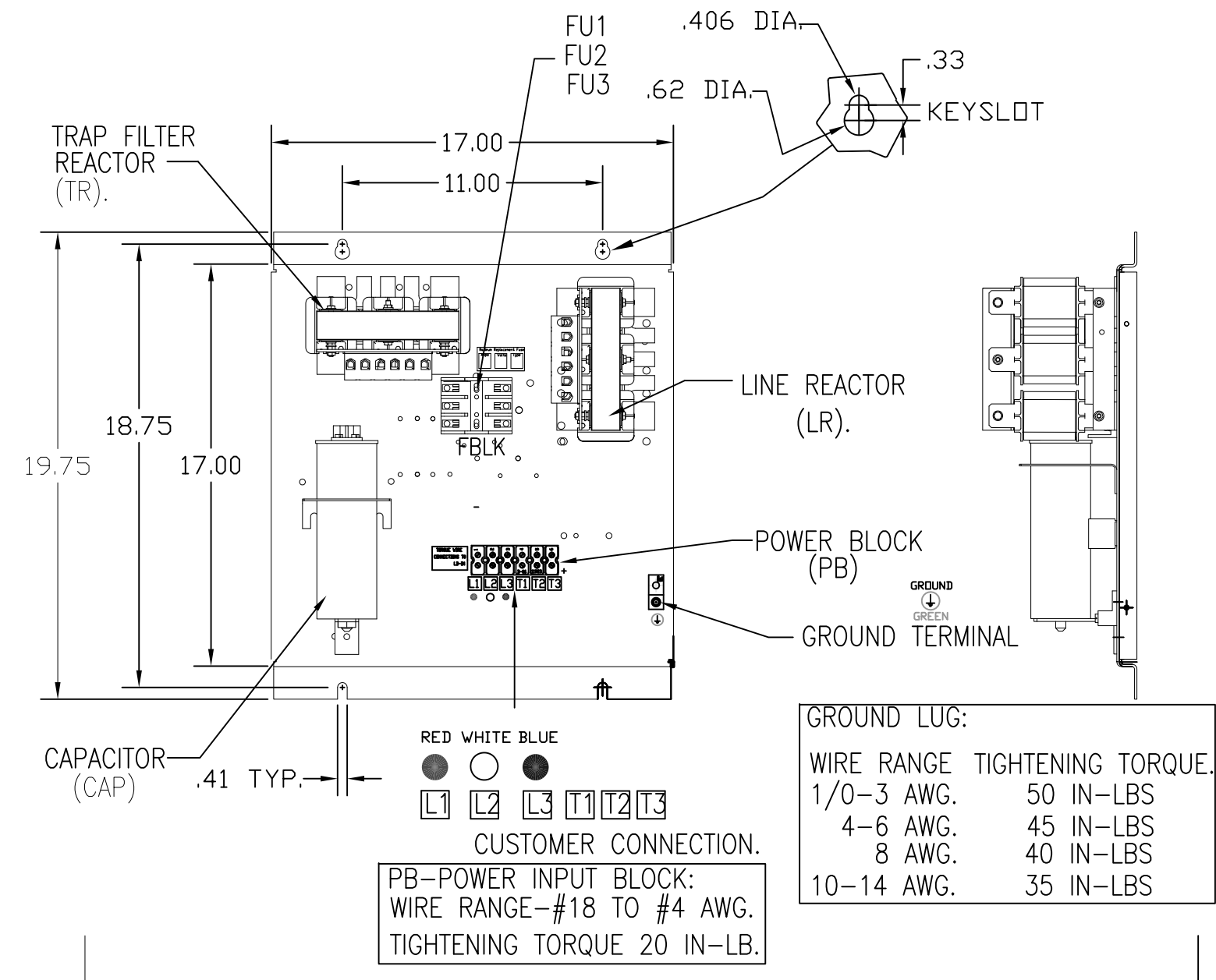
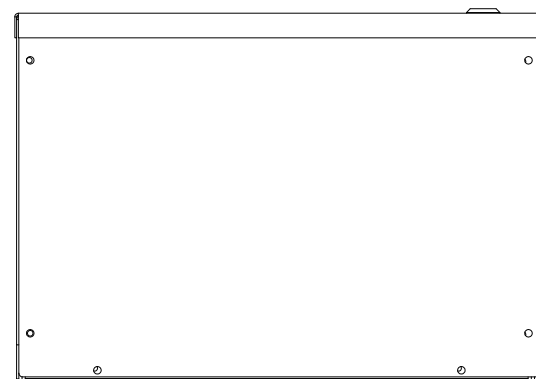
L1 L2 L3
RED WHITE BLUE



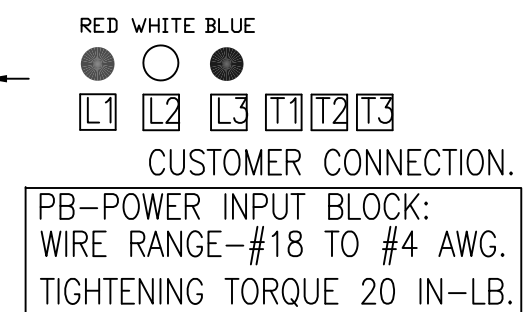
UL DOOR
MTD. SHIELD
2 PLACES.



HATCHED AREAS ARE SUGGESTED
CUSTOMER WIRE AND EXIT LOCATIONS
(BOTTOM ENTRANCE ALTERNATE-CONSULT TCI)



GROUND LUG:	
WIRE RANGE	TIGHTENING TORQUE.
1/0-3 AWG.	50 IN-LBS
4-6 AWG.	45 IN-LBS
8 AWG.	40 IN-LBS
10-14 AWG.	35 IN-LBS



ENCLOSURE NOT SHOWN

CUSTOMER IS RESPONSIBLE FOR INSTALLATION
TO MEET ALL NATIONAL AND LOCAL ELECTRICAL CODES.

TCI, LLC CLAIMS PROPRIETARY RIGHTS IN THE MATERIAL HEREIN DISCLOSED. IT IS SUPPLIED WITHOUT PREJUDICE TO ANY PATENT RIGHTS OF TCI AND MAY NOT BE REPRODUCED OR USED TO MANUFACTURE ANYTHING SHOWN THEREIN WITHOUT WRITTEN PERMISSION FROM TCI.	AS BUILT	5/12/11	DSW	TOLERANCES (EXCEPT AS NOTED): DECIMAL .XX ± .03 .XXX ± .01 FRACTIONAL ± 1/32 ANGULAR ± 1/2°	W132 N10611 Grant Drive Germantown, WI 53022
	REVISION	DATE	BY	SCALE TO FIT	
	HG5LW01ST, 5.5KW 400/3/50, ENCLOSED				DRN. BY DSW DATE 5/12/11 DWG. NO. 104653DG
	SHT. 1 OF 1				SIZE C