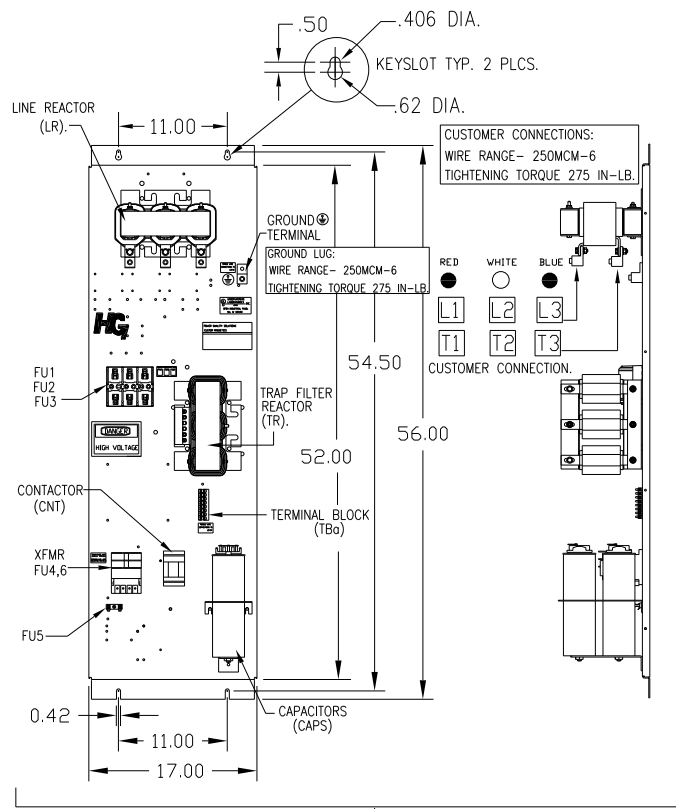
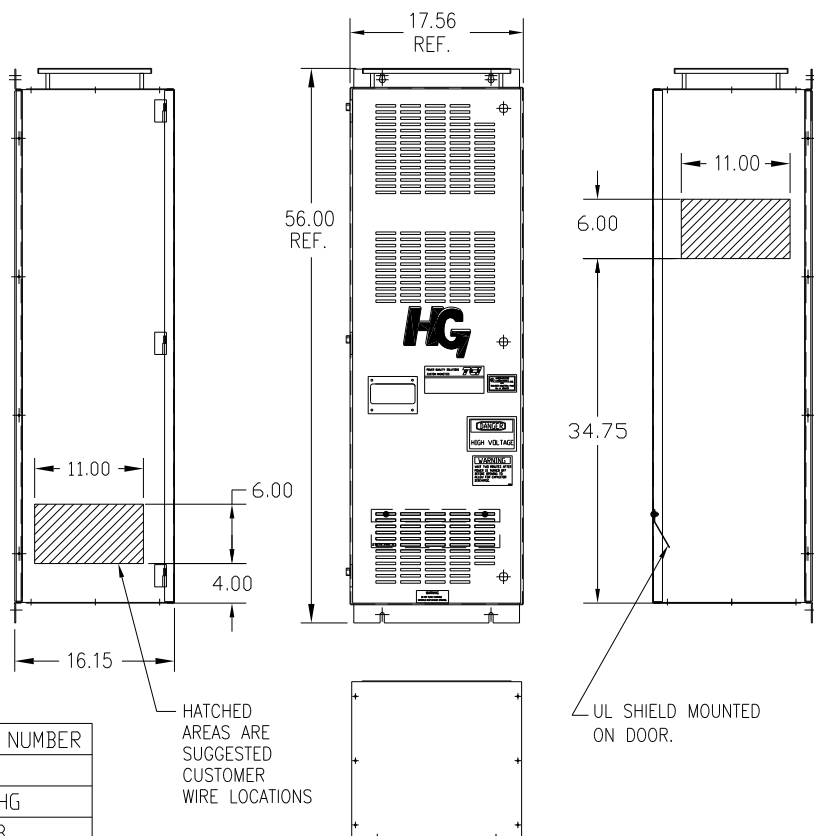
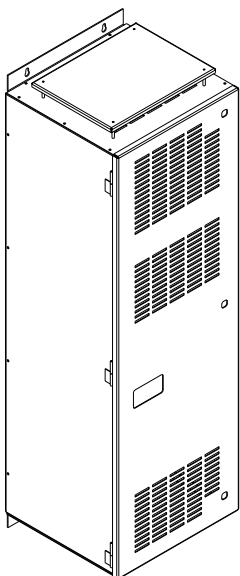


UNIT SPECIFICATIONS:					
KW	HARMONIC	VOLT	HZ	PHASE	FLA
55	5TH	400	50	3	105
ENCLOSURE		NEMA 1			
APPROX.WT. LBS.		255			



CUSTOMER CONNECTIONS:
WIRE RANGE - 250MCM-6
TIGHTENING TORQUE 275 IN.-LB.

GROUND TERMINAL
GROUND LUG:
WIRE RANGE - 250MCM-6
TIGHTENING TORQUE 275 IN.-LB.

RED ● WHITE ○ BLUE ●

L1 L2 L3
T1 T2 T3

CUSTOMER CONNECTION.

ENCLOSURE NOT SHOWN

CUSTOMER IS RESPONSIBLE FOR INSTALLATION TO MEET ALL NATIONAL AND LOCAL ELECTRICAL CODES.

SYMBOL	TCI PART NUMBER
LR	KDRG34T
TR	KTR22L55HG
CAP1, 2. (20 KVAR)	KCAP20A6B
XFMR.	24385
Fu1, 2, 3	27547
Fu4,6	13180
Fu5	24011
CNT	23792

HATCHED AREAS ARE SUGGESTED CUSTOMER WIRE LOCATIONS

UL SHIELD MOUNTED ON DOOR.

SEE DRAWING# 27703 FOR SCHEMATIC

				TOLERANCES (EXCEPT AS NOTED)		TCI 7878 N. 86th STREET MILWAUKEE, WI 53224	
				DECIMAL		HG55LW01STC, 55KW 400/3/50, ENCLOSED, W/CNT	
				XX ± .03		DRN. BY DSW DATE 11/11/2010 DWG. NO. 104534DG	
				XXX ± .01		SCALE TO FIT	
				FRACTIONAL ± 1/32		APRVD C	
				ANGULAR ± 1/2°		SHT. 1 OF 1	
A	AS BUILT	11/04/10	DSW	NO	REVISION	DATE	BY