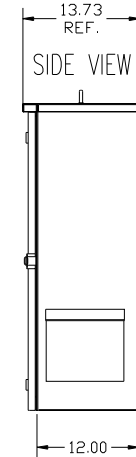
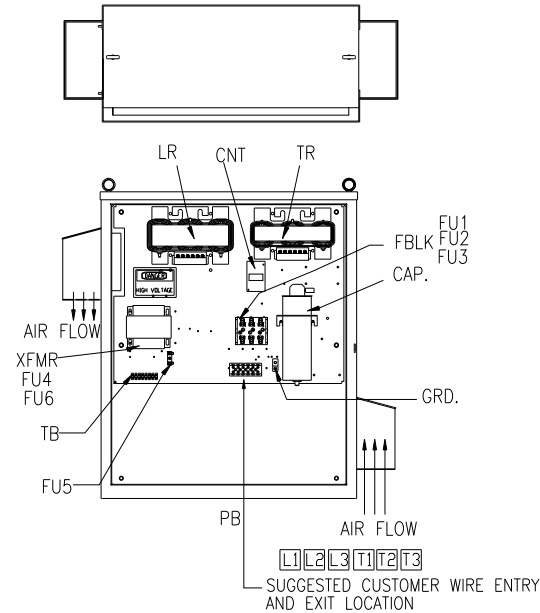
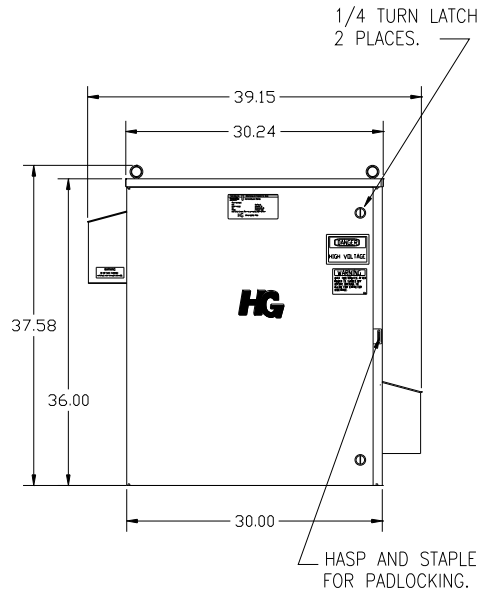
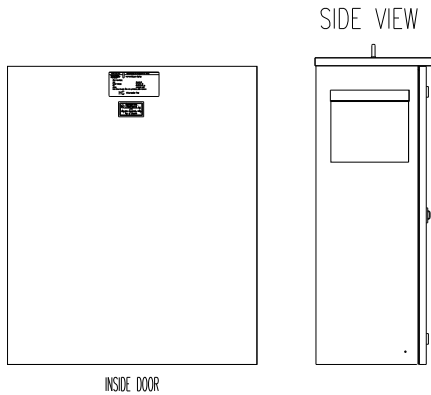
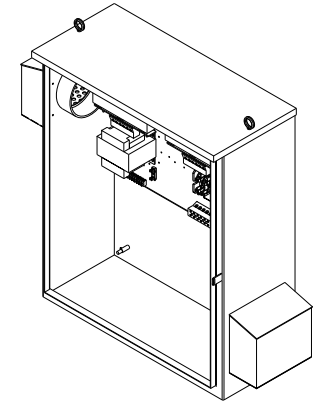
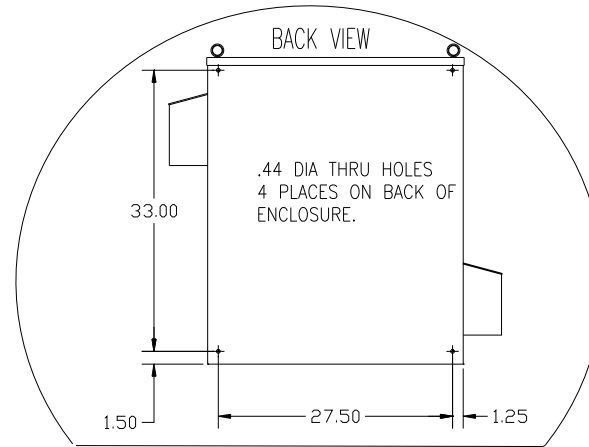
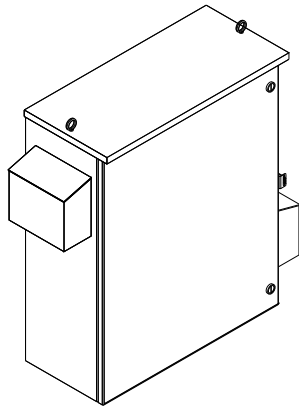


CUSTOMER IS RESPONSIBLE FOR INSTALLATION
TO MEET ALL NATIONAL AND LOCAL ELECTRICAL CODES.

NOTE: USE ONLY HUBS OR FITTINGS THAT COMPLY
WITH UL514B FOR TYPE 3R ENCLOSURES.

SEE DWG# 26972-1 FOR SCHEMATIC



UNIT SPECIFICATIONS:

| KVAR | HARMONIC | VOLT | HZ | PHASE | HP |
|------------------|----------|------------|----|-------|----|
| 15 | 5TH | 600 | 60 | 3 | 50 |
| ENCLOSURE | | UL TYPE 3R | | | |
| COLOR | | WHITE | | | |
| FEATURES | | CONTACTOR | | | |
| APPROX. WT. LBS. | | 251 | | | |

| HG50CW03STC | |
|---------------------|---|
| COMPONENTS | |
| LINE REACTOR LR | X |
| TRAP REACTOR TR | X |
| CAPACITOR CAP | X |
| TRAP FUSING FU1,2,3 | X |
| XFMR | X |
| XFMR FU4,6 | X |
| XFMR FUS | X |
| CNT | X |

PB—POWER INPUT BLOCK:
WIRE RANGE—#18 TO #4 AWG.
TIGHTENING TORQUE 20 IN-LB.

GROUND LUG:
WIRE RANGE—2/0 TO #6 AWG.
TIGHTENING TORQUE 120 IN-LB.

| TOLERANCES (EXCEPT AS NOTED): | | | | TOL. DECIMAL | TOL. FRACTIONAL | TOL. ANGULAR | TOL. SCALE |
|-------------------------------|----------|----------|--------|--------------|-----------------|--------------|------------|
| DRN. BY | DATE | APPR. BY | SCALE | | | | |
| DSW | 2/19/14 | DSW | TO FIT | XX ± .12 | ± 1/32 | ± 1/2° | TO FIT |
| DSW | 10/16/09 | DSW | TO FIT | .XXX ± .03 | ± 1/32 | ± 1/2° | TO FIT |
| REVISION | | | | DATE | | BY | |

TCL 7878 N. 86th STREET
MILWAUKEE, WI 53224

HG50CW03STC, 50HP
600/3/60 UL TYPE 3R

DRN. BY: DSW DATE: 02/24/09 DWG. NO: 103692DG
SCALE: TO FIT APPR. BY: C