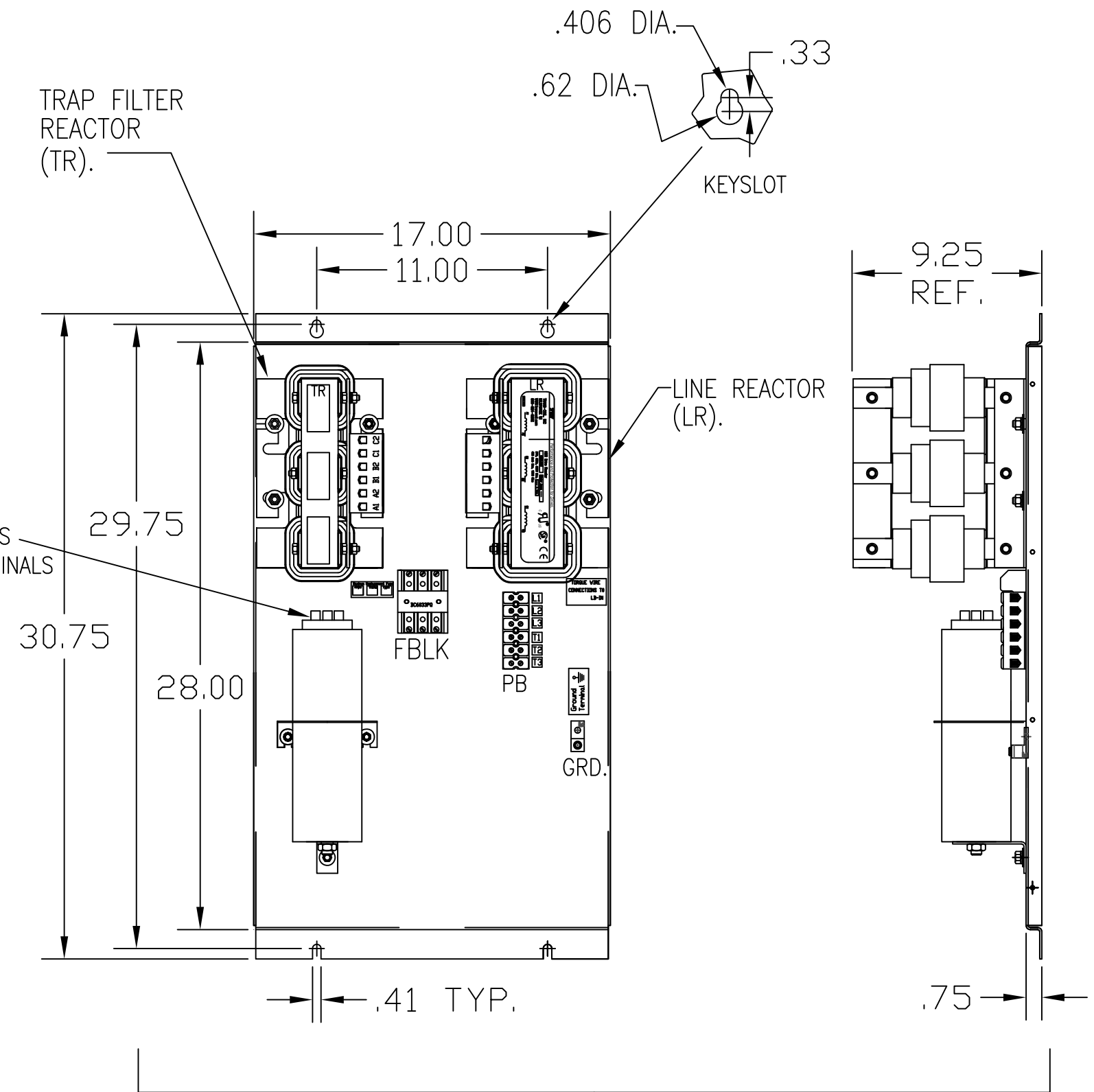
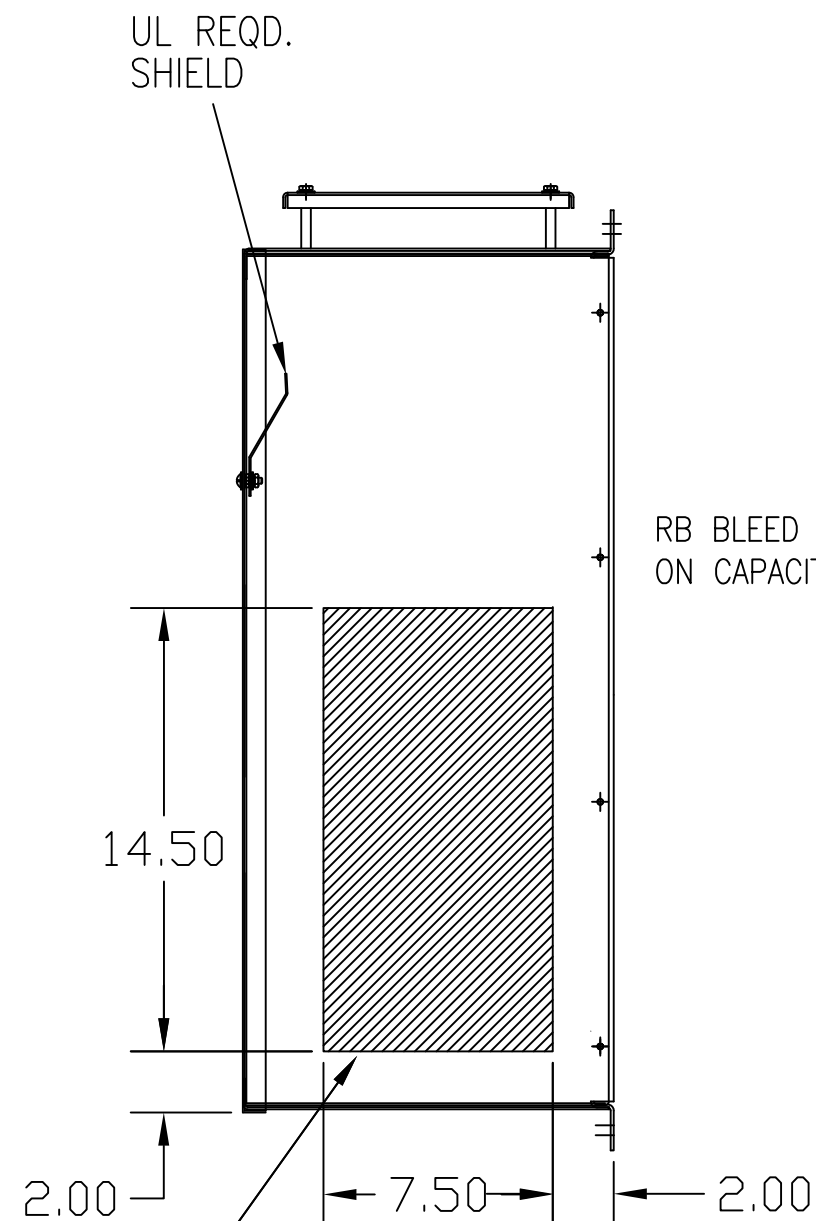
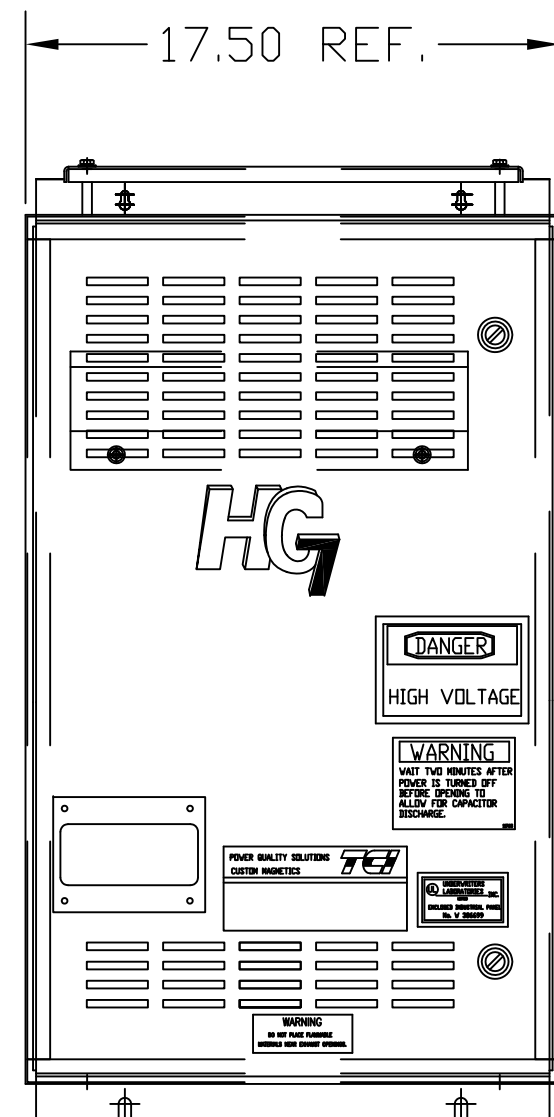
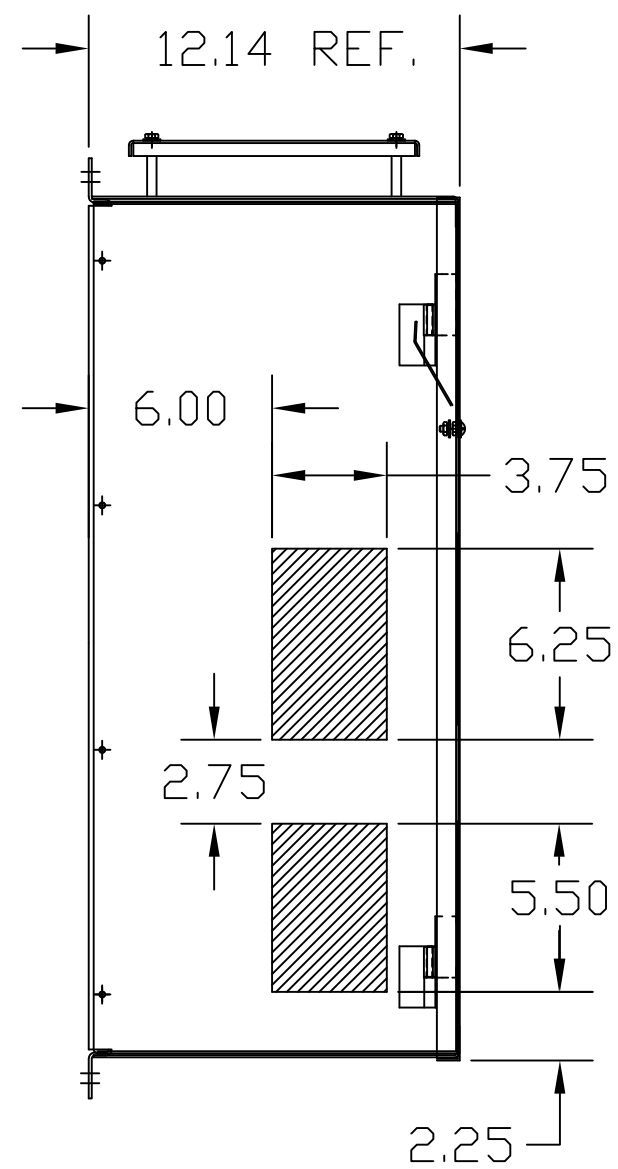
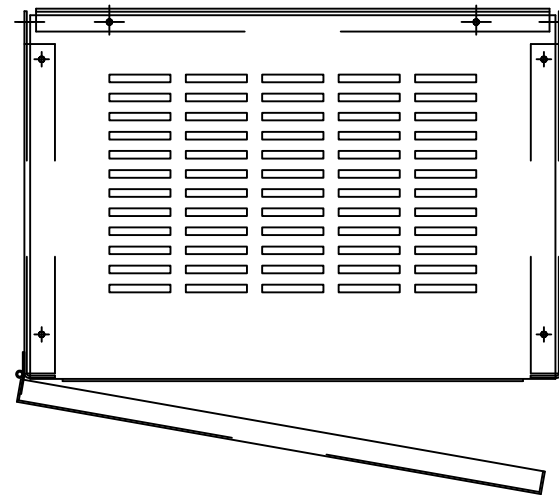


UNIT SPECIFICATIONS:					
KVAR	HARMONIC	VOLT	HZ	PHASE	HP
15	5TH	600	60	3	50
ENCLOSURE		NEMA 1			
APPROX.WT. LBS.		180			

SYMBOL	TCI PART NUMBER
LR	KDRG41T
TR	KTR15C65HG
CAP.	KCAP15C6B
Fu1, 2, 3	11307



ENCLOSURE NOT SHOWN

HATCHED AREAS ARE SUGGESTED CUSTOMER WIRE AND EXIT LOCATIONS (BOTTOM ENTRANCE ALTERNATE-CONSULT TCI)

PB-POWER INPUT BLOCK:
WIRE RANGE-#18 TO #4 AWG.
TIGHTENING TORQUE 20 IN-LB.

SEE 25114 FOR SCHEMATIC

CUSTOMER IS RESPONSIBLE FOR INSTALLATION TO MEET ALL NATIONAL AND LOCAL ELECTRICAL CODES.

GROUND LUG:
WIRE RANGE-1/0 TO #14 AWG.
1/0 AWG thru 2 AWG 50 IN-LBS. MAX.
4 AWG thru 6 AWG 45 IN-LBS. MAX.
8 AWG 40 IN-LBS. MAX.
10 AWG thru 14 AWG 35 IN-LBS. MAX.

TCI, LLC CLAIMS PROPRIETARY RIGHTS IN THE MATERIAL HEREIN DISCLOSED. IT IS SUPPLIED WITHOUT PREJUDICE TO ANY PATENT RIGHTS OF TCI AND MAY NOT BE REPRODUCED OR USED TO MANUFACTURE ANYTHING SHOWN THEREIN WITHOUT WRITTEN PERMISSION FROM TCI.

NO	REVISION	DATE	BY	TOLERANCES (EXCEPT AS NOTED):
B	2702 RVSD UL SHIELD	11/22/11	RJC	FRACTIONAL ± 1/32
A	2516, CAP WAS 17817	9/30/07	RJC	ANGULAR ± 1/2°
NO	REVISION	DATE	BY	DECIMAL .XX ± .03 .XXX ± .01

TCI® W132 N10611 Grant Drive
Germanstown, WI 53022

HG50CW01ST, HG7 STANDARD
50HP, 600/3/60, TYPE 1

DRN. BY DSV DATE 3/15/05 DWG. NO. 102483DG
SCALE TO FIT SIZE C SHT. 1 OF 1