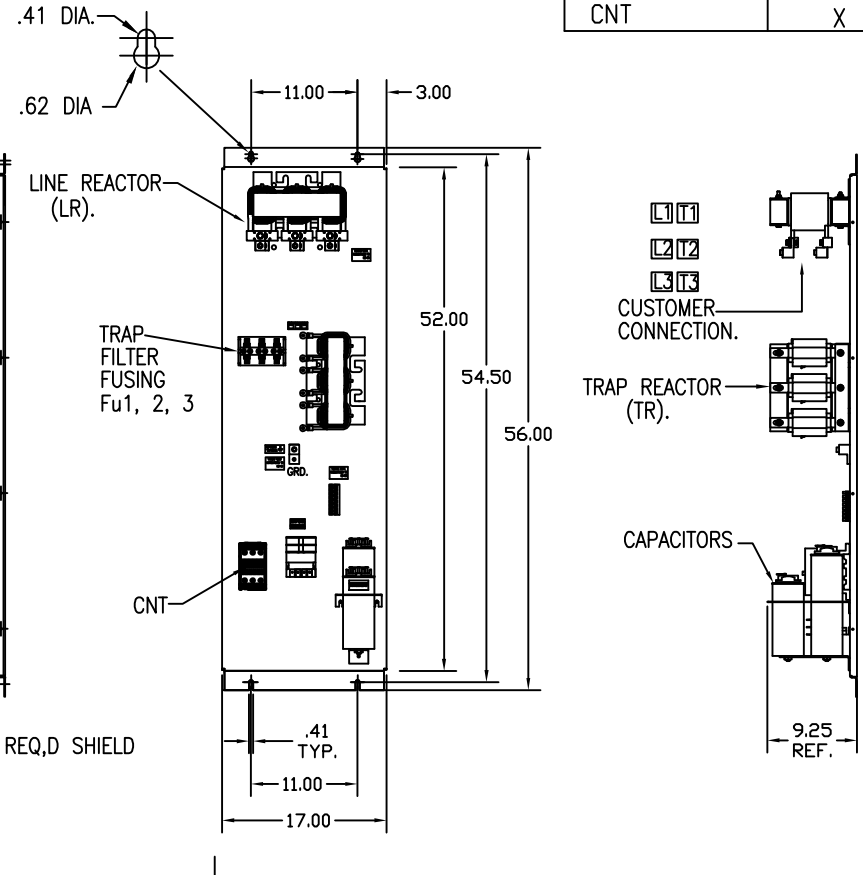
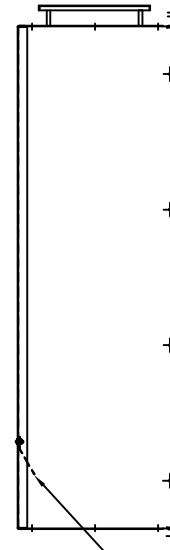
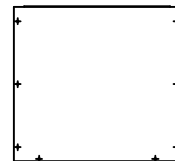
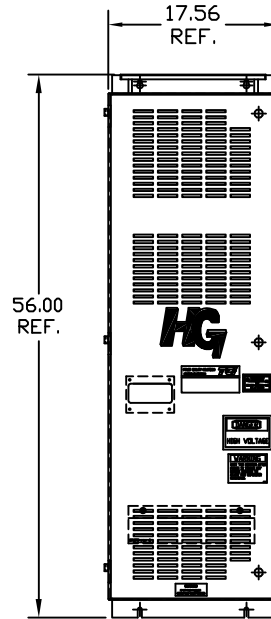
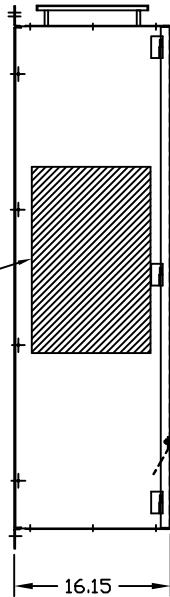


UNIT SPECIFICATIONS:					
KVAR	HARMONIC	VOLT	HZ	PHASE	HP
15	5TH	240	60	3	50
ENCLOSURE		NEMA 1			
		WITH CONTACTOR			
APPROX.WT. LBS.		218			

SYMBOL	HG50BW01STC
LR	X
TR	X
CAP1 (10 KVAR)	X
CAP2 (5 KVAR)	X
XFMR.	X
Fu1a;2a;3a	X
Fu4,6	X
CNT	X

HATCHED AREA(S) ARE SUGGESTED CUSTOMER INPUT AND OUTPUT WIRE LOCATIONS



ENCLOSURE NOT SHOWN

CUSTOMER CONNECTIONS:
WIRE RANGE-250MCM-6
TIGHTENING TORQUE 275 IN-LB.

GROUND LUG:
WIRE RANGE-250MCM-6
TIGHTENING TORQUE 275 IN-LB.

SEE 26824 FOR SCHEMATIC

CUSTOMER IS RESPONSIBLE FOR INSTALLATION
TO MEET ALL NATIONAL AND LOCAL ELECTRICAL CODES.

				TOLERANCES (EXCEPT AS NOTED)		TCI	
				DECIMAL		w132 N10611 GRANT DRIVE GERMANTOWN, WI. 53022	
				.XX ± .03		HG50BW01STC, 50HP 240/3/60, ENCL, WITH CNT	
				.XXX ± .01			
B	3267	CNT CHANGE	7/2/15	BWM	FRACTIONAL ± 1/32	Dwg. No. 103595DG	
A	2702	RVSD UL SHIELD	1/30/12	RJC	ANGULAR ± 1/2°		
NO	REVISION		DATE	BY	SCALE TO FIT	DATE 10/21/08	APPRV. C