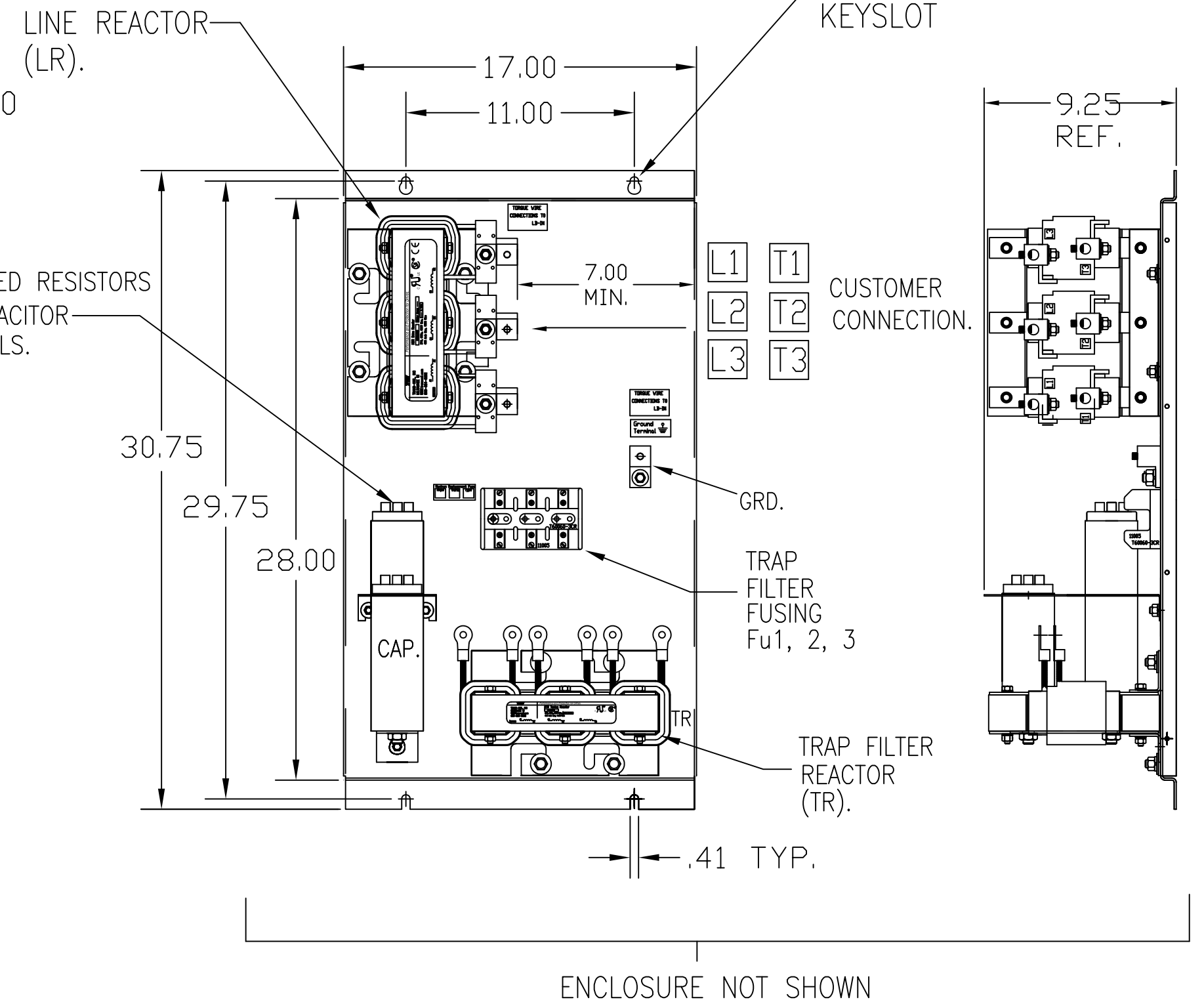
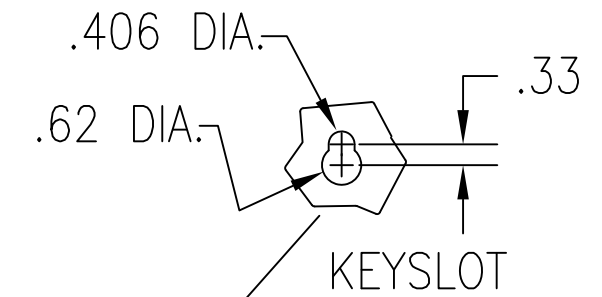
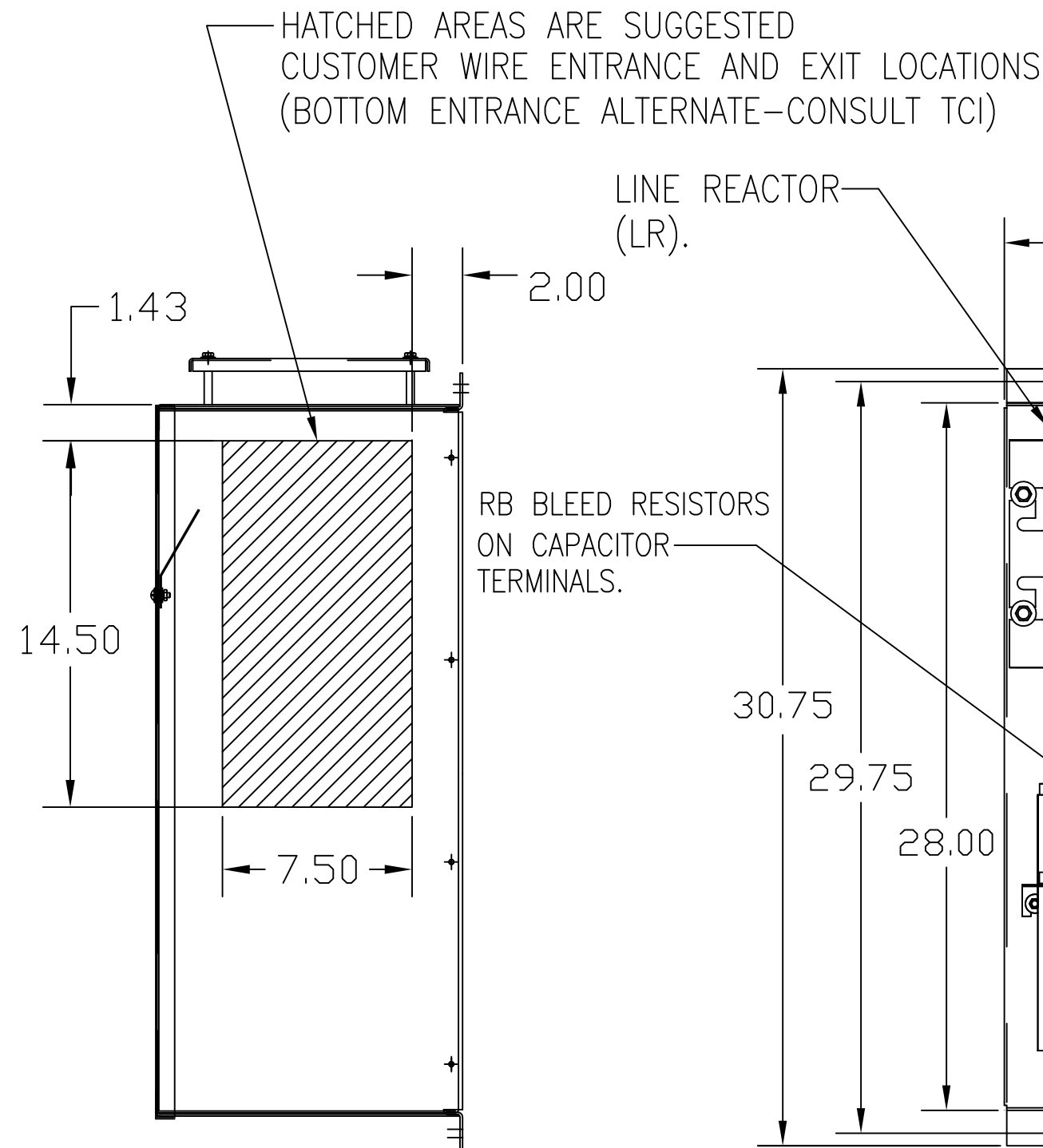
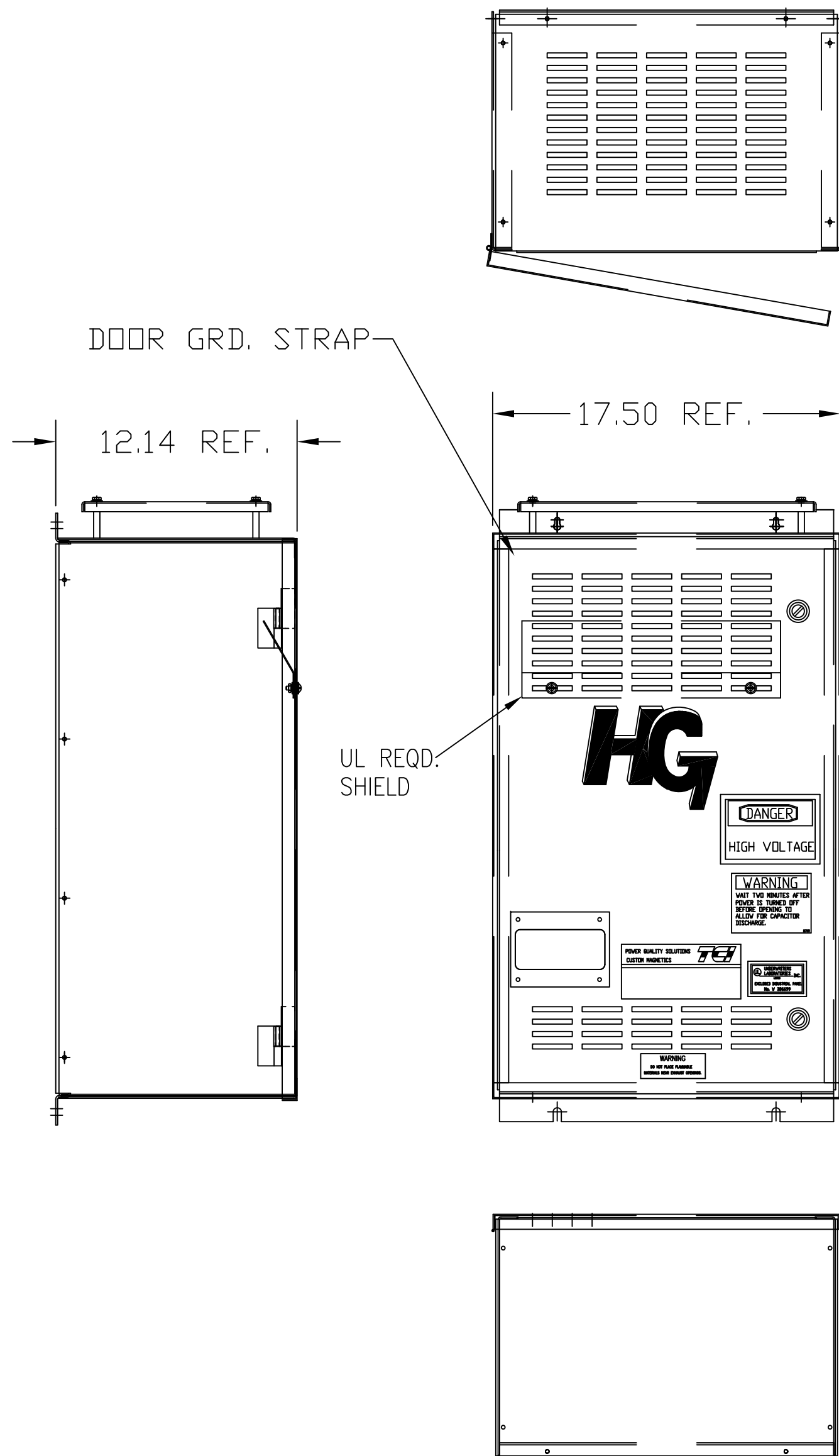


UNIT SPECIFICATIONS:					
KVAR HARMONIC	VOLT	HZ	PHASE	HP	
15 5TH	240	60	3	50	
ENCLOSURE	NEMA 1				
APPROX.WT. LBS.	180				

SYMBOL	TCI PART NUMBER
LR	KDRG21T
TR	KTR15B65HG
CAP1 10 KVAR	KCAP10B6B
CAP2. 5 KVAR	KCAP5B6B
Fu1, 2, 3	11006



CUSTOMER CONNECTIONS:  
 WIRE RANGE-250MCM-6  
 TIGHTENING TORQUE 275 IN-LB.

GROUND LUG:  
 WIRE RANGE-250MCM-6  
 TIGHTENING TORQUE 275 IN-LB.

FOR SCHEMATIC SEE 25179

CUSTOMER IS RESPONSIBLE FOR INSTALLATION  
 TO MEET ALL NATIONAL AND LOCAL ELECTRICAL CODES.

TCI, LLC CLAIMS PROPRIETARY RIGHTS IN THE MATERIAL HEREIN DISCLOSED. IT IS SUPPLIED WITHOUT PREJUDICE TO ANY PATENT RIGHTS OF TCI AND MAY NOT BE REPRODUCED OR USED TO MANUFACTURE ANYTHING SHOWN THEREIN WITHOUT WRITTEN PERMISSION FROM TCI.				TOLERANCES (EXCEPT AS NOTED):	W132 N10611 Grant Drive Germantown, WI 53022 HG50BW01ST, HG7 STANDARD 50HP, 240/3/60, TYPE 1 DRN. BY DSW DATE 4/21/05 DWG. NO. 102517DG SCALE TO FIT SIZE C SHT.1 OF 1	
	B	2702 RVSD UL SHIELD		.XX ±.03		
		COLOR WAS BLACK	12/14/10	RJC		.XXX±.01
	A	2516, CAP WAS 17812				FRACTIONAL ± 1/32
				ANGULAR ± 1/2°		
NO	REVISION	DATE	BY			