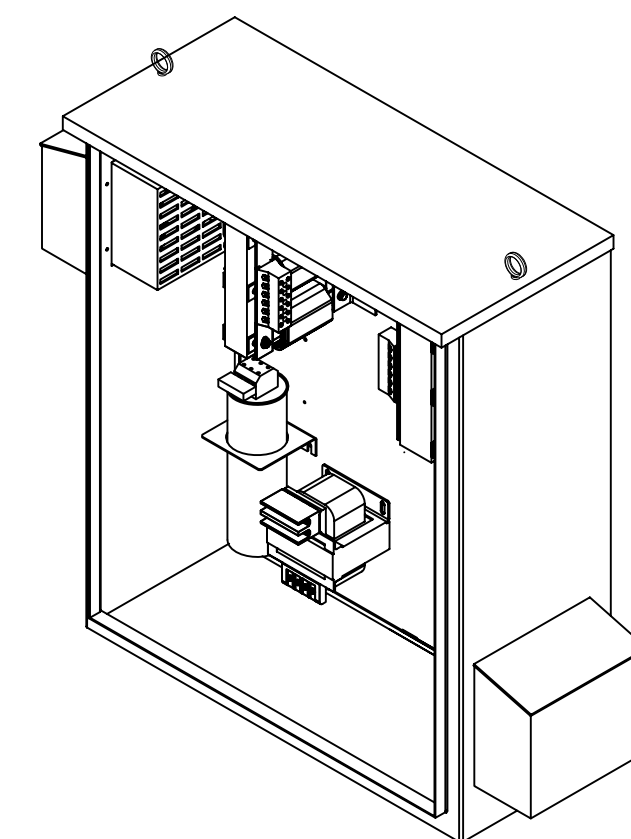
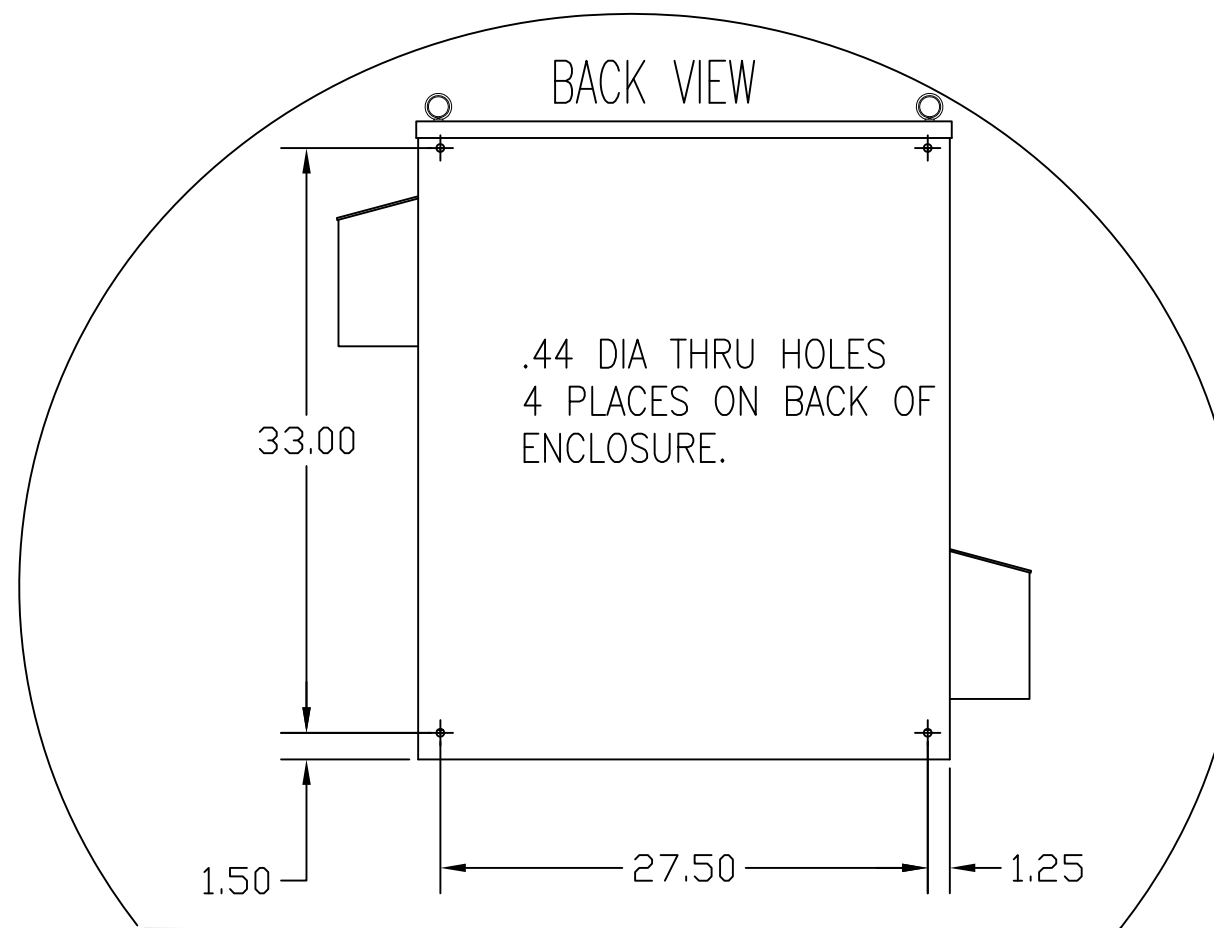
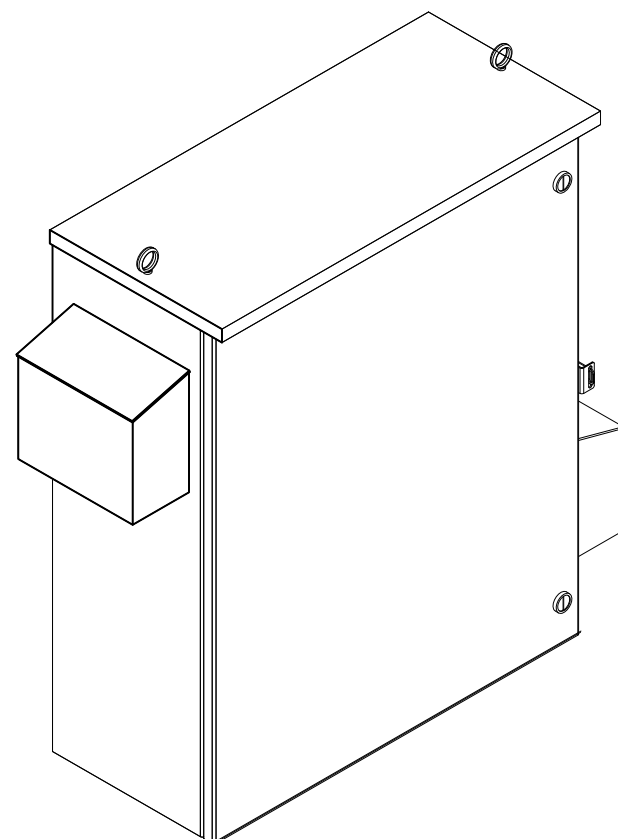
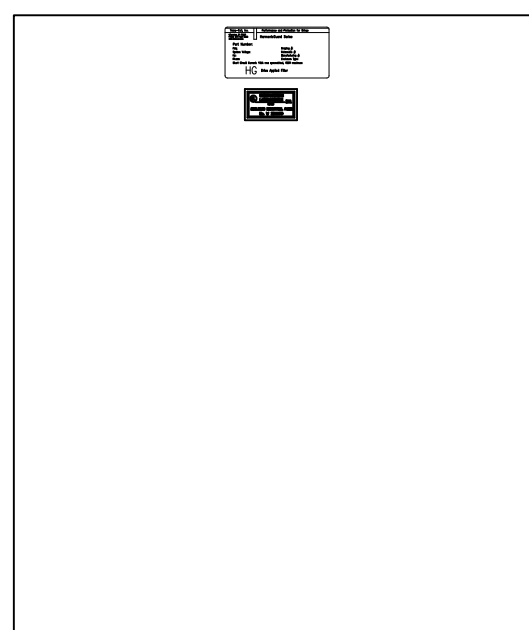


CUSTOMER IS RESPONSIBLE FOR INSTALLATION TO MEET ALL NATIONAL AND LOCAL ELECTRICAL CODES.

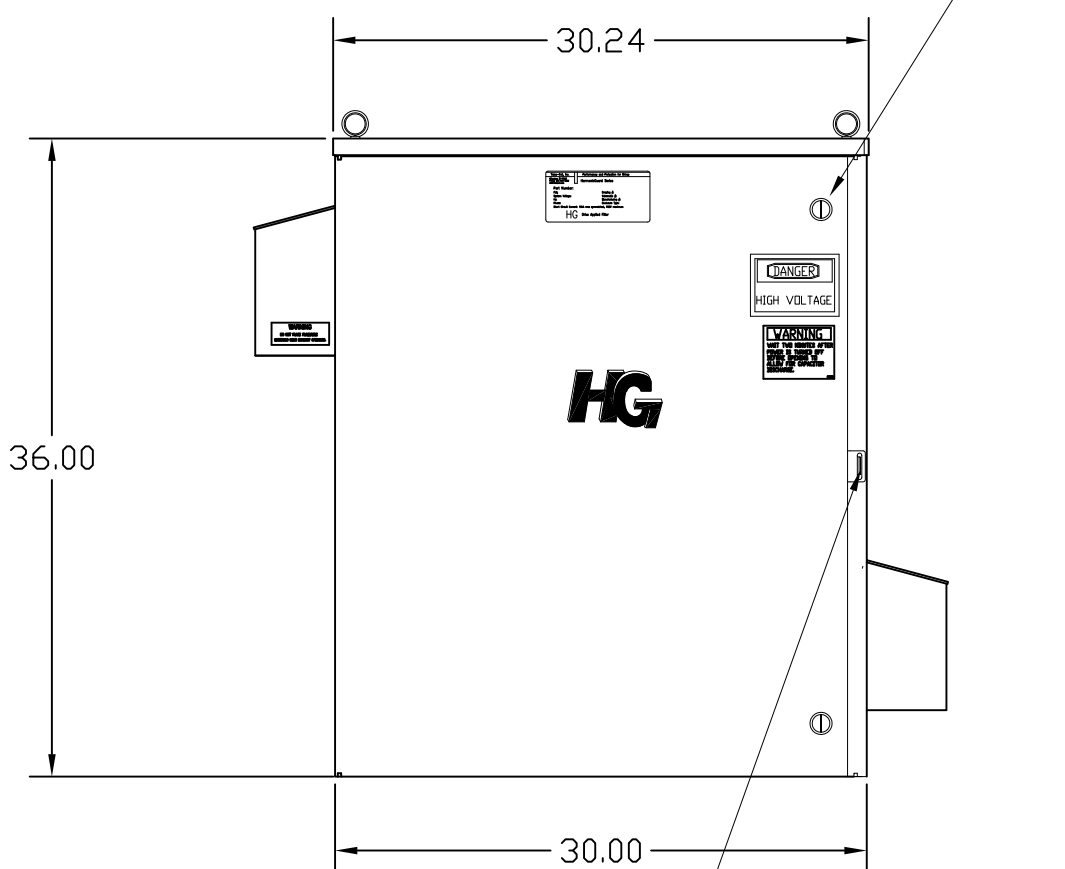
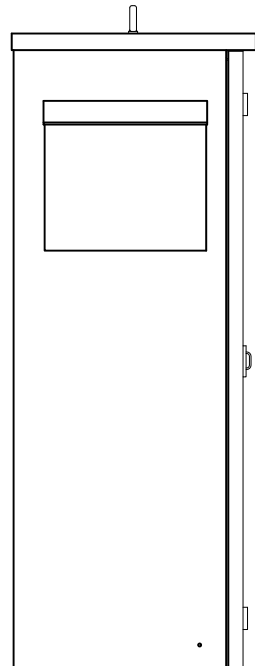
NOTE: USE ONLY HUBS OR FITTINGS THAT COMPLY WITH UL514B FOR TYPE 3R ENCLOSURES. SEE DWG# 26756 FOR SCHEMATIC



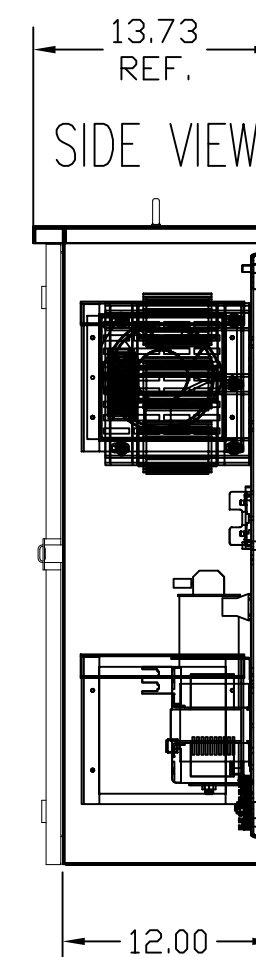
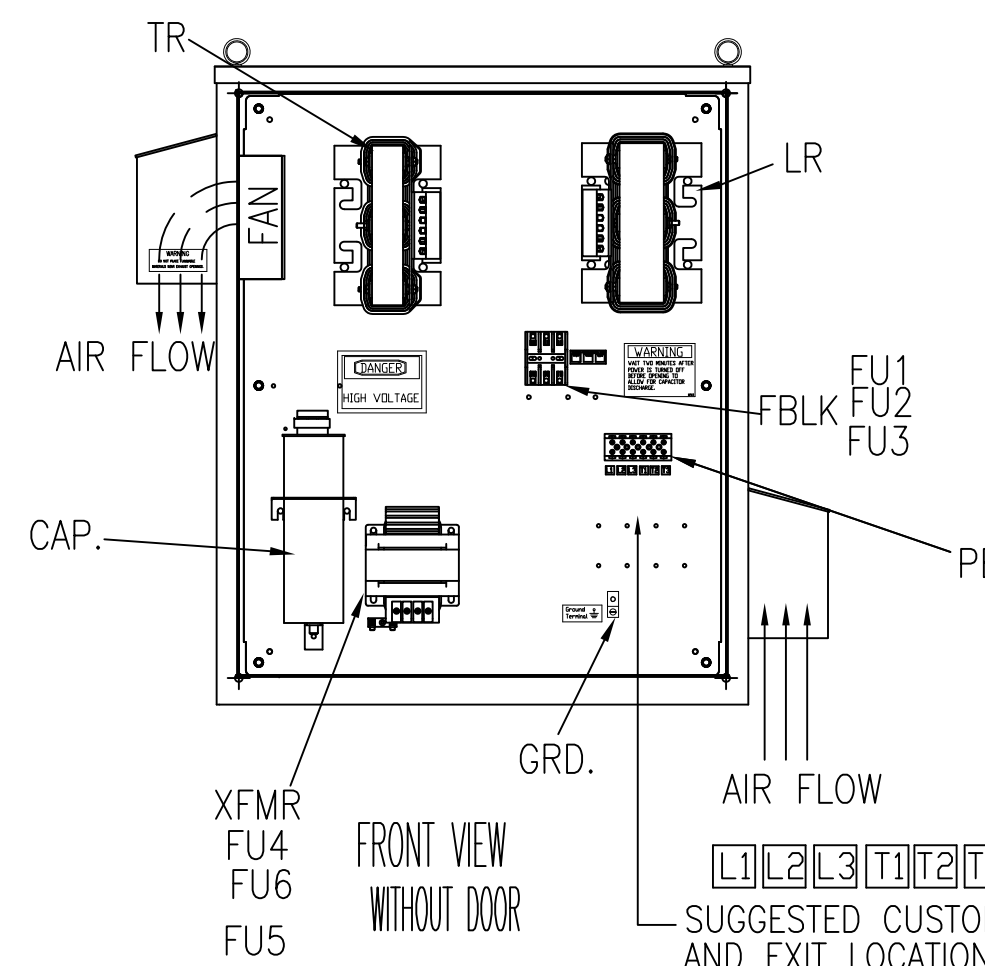
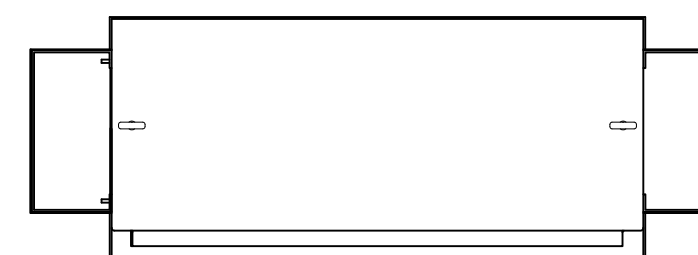
SIDE VIEW



INSIDE DOOR



HASP AND STAPLE FOR PADLOCKING.



| UNIT SPECIFICATIONS: |          |            |    |       |    |
|----------------------|----------|------------|----|-------|----|
| KVAR                 | HARMONIC | VOLT       | HZ | PHASE | HP |
| 15                   | 5TH      | 480        | 60 | 3     | 50 |
| ENCLOSURE            |          | UL TYPE 3R |    |       |    |
| COLOR                |          | WHITE      |    |       |    |
| APPROX.WT. LBS.      |          | 229        |    |       |    |

| SYMBOL        | TCI PART NUMBER |
|---------------|-----------------|
| LR            | KDRG1T          |
| TR            | KTR15A65HG      |
| CAP (15 KVAR) | 27608           |
| XFMR.         | 23896           |
| Fu1, 2, 3     | 11307           |
| Fu4,6         | 24009           |
| Fu5           | 17567           |

| ALTERNATE     | TCI PART NUMBER |
|---------------|-----------------|
| CAP (15 KVAR) | KCAP15A6B       |

PB—POWER INPUT BLOCK:  
 1 AWG thru 4 AWG 35 IN—LBS. MAX.  
 6 AWG thru 14 AWG 30 IN—LBS. MAX.  
 16 AWG thru 20 AWG 25 IN—LBS. MAX.  
 22 AWG 20 IN—LBS. MAX.

GROUND LUG:  
 WIRE RANGE—1/0 TO #14 AWG.  
 1/0 AWG thru 2 AWG 50 IN—LBS. MAX.  
 4 AWG thru 6 AWG 45 IN—LBS. MAX.  
 8 AWG 40 IN—LBS. MAX.  
 10 AWG thru 14 AWG 35 IN—LBS. MAX.

TCI, LLC CLAIMS PROPRIETARY RIGHTS IN THE MATERIAL HEREIN DISCLOSED. IT IS SUPPLIED WITHOUT PREJUDICE TO ANY PATENT RIGHTS OF TCI AND MAY NOT BE REPRODUCED OR USED TO MANUFACTURE ANYTHING SHOWN THEREIN WITHOUT WRITTEN PERMISSION FROM TCI.

| NO | REVISION             | DATE     | BY  |
|----|----------------------|----------|-----|
| C  | 2900 CHG TO ASC CAPS | 3/4/13   | DSW |
| B  | 2707 CHG GRD. LUG    | 6/15/11  | DSW |
| A  | 2641 ADD EYEBOLTS    | 10/13/09 | DSW |

TOLERANCES (EXCEPT AS NOTED)  
 DECIMAL  
 .XX ±.12  
 .XXX ±.06  
 FRACTIONAL  
 ± 1/32  
 ANGULAR  
 ± 1/2°

**TCI**® W132 N10611 Grant Drive  
 Germantown, WI 53022

HG50AW03ST, 50HP  
 480/3/60 UL TYPE 3R

DRN. BY DSW DATE 8/26/08 DWG. NO. 103617DG  
 SCALE TO FIT SIZE C SHT. 1 OF 1