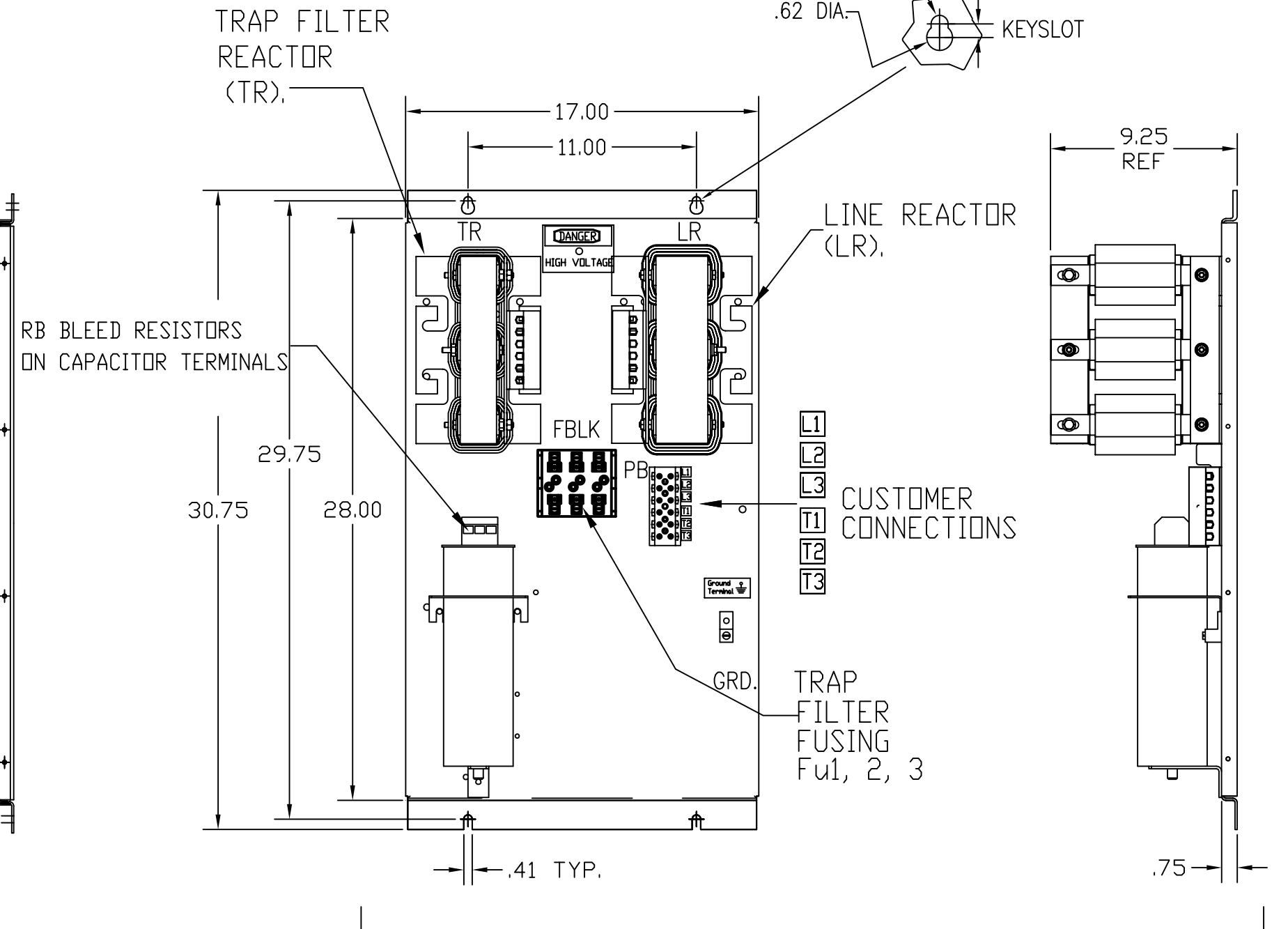
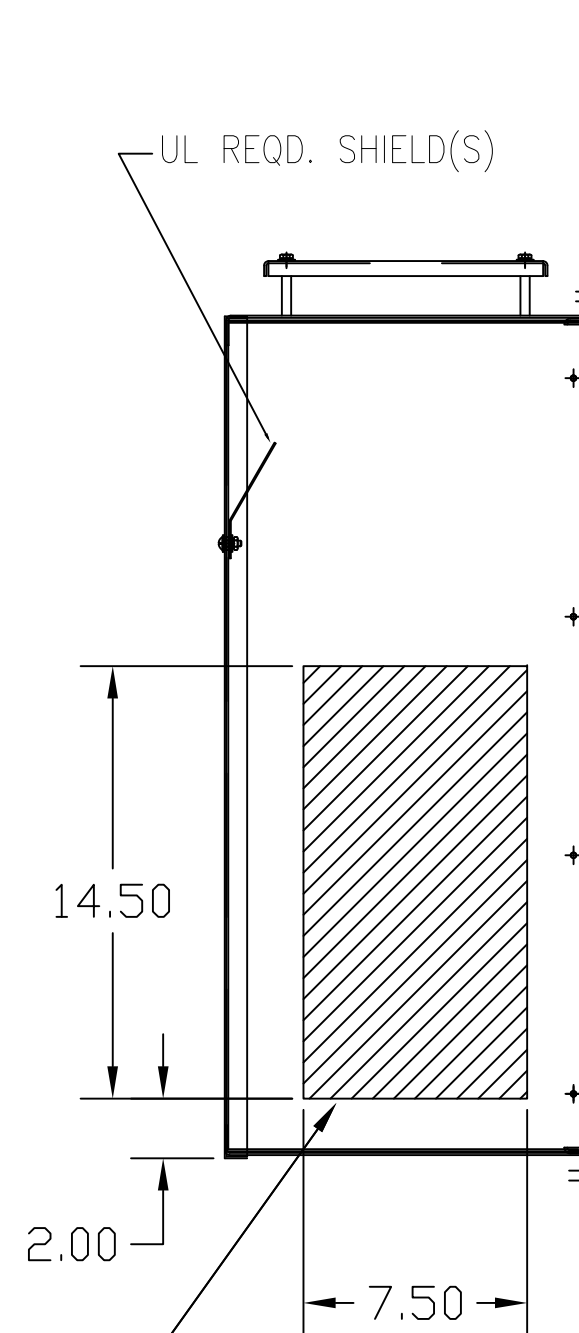
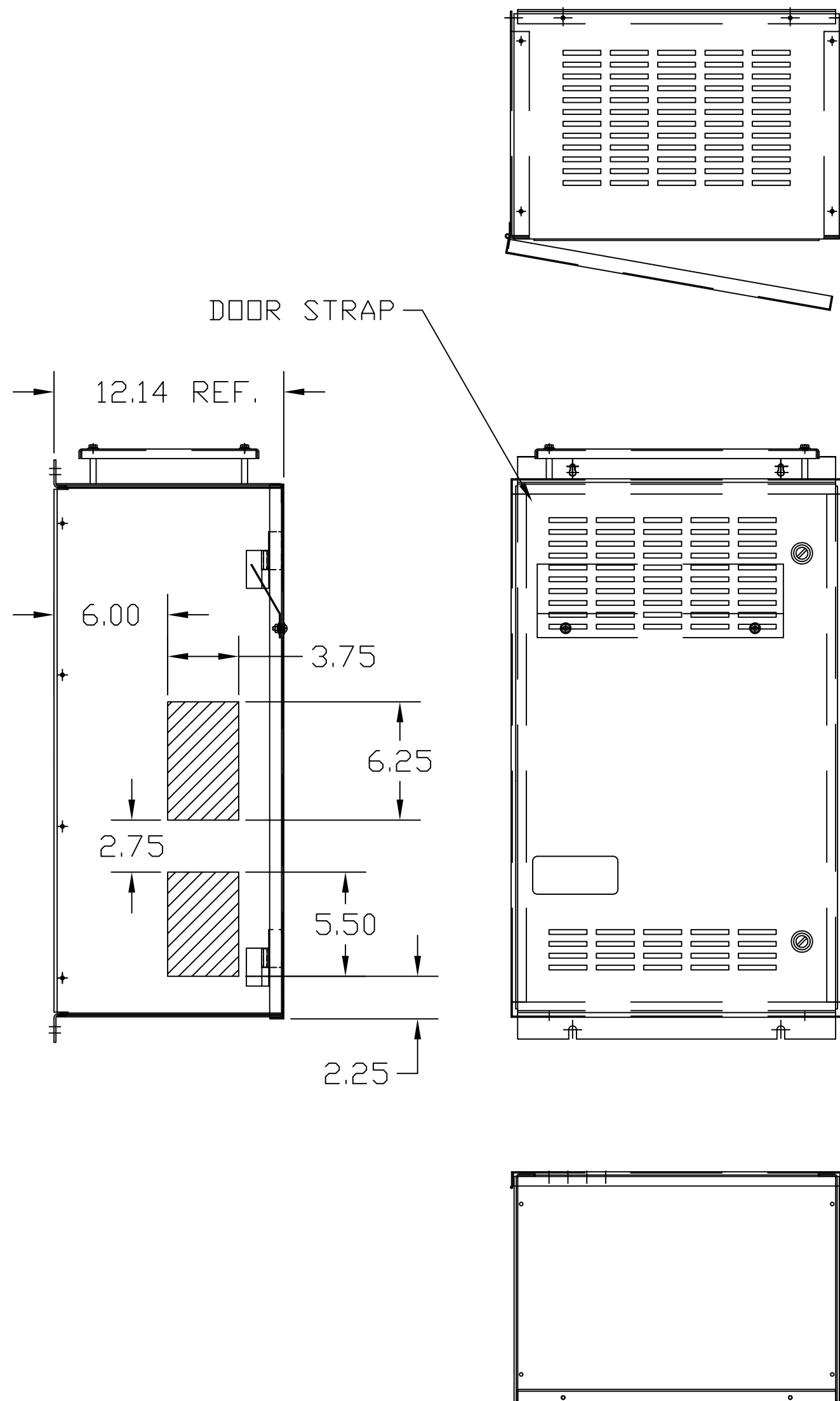


UNIT SPECIFICATIONS:					
KVAR HARMONIC	VOLT	HZ	PHASE	HP	
15	5TH	480	60	3	50
ENCLOSURE	NEMA 1				
APPROX.WT. LBS.	180				

HG50AW01ST	
COMPONENTS	
LINE REACTOR LR	X
TRAP REACTOR TR	X
CAPACITOR CAP	X
TRAP FUSING FU1,2,3	X



HATCHED AREAS ARE SUGGESTED CUSTOMER WIRE ENTRANCE AND EXIT LOCATIONS (BOTTOM ENTRANCE ALTERNATE-CONSULT TCI)

ENCLOSURE NOT SHOWN

SEE 25077 FOR SCHEMATIC

CUSTOMER IS RESPONSIBLE FOR INSTALLATION TO MEET ALL NATIONAL AND LOCAL ELECTRICAL CODES.

PB-POWER INPUT BLOCK:
 1 AWG thru 4 AWG 35 IN-LBS. MAX.
 6 AWG thru 14 AWG 30 IN-LBS. MAX.
 16 AWG thru 22 AWG 25 IN-LBS. MAX.

GROUND LUG:
 WIRE RANGE-1/0 TO #14 AWG.
 1/0 AWG thru 2 AWG 50 IN-LBS. MAX.
 4 AWG thru 6 AWG 45 IN-LBS. MAX.
 8 AWG 40 IN-LBS. MAX.
 10 AWG thru 14 AWG 35 IN-LBS. MAX.

TCI, LLC CLAIMS PROPRIETARY RIGHTS IN THE MATERIAL HEREIN DISCLOSED. IT IS SUPPLIED WITHOUT PREJUDICE TO ANY PATENT RIGHTS OF TCI AND MAY NOT BE REPRODUCED OR USED TO MANUFACTURE ANYTHING SHOWN THEREIN WITHOUT WRITTEN PERMISSION FROM TCI.	E	3014 FBLK CHG	1/24/14	BMZ	TOLERANCES (EXCEPT AS NOTED): DECIMAL	W132 N10611 Grant Drive Germantown, WI 53022 HG50AW01ST, HG7, STANDARD 50HP, 480/3/60, TYPE 1 DRN. BY DSW DATE 3/08/05 DWG. NO. 102559DG SCALE TO FIT SIZE C SHT.1 OF 1
	D	2900 CHG TO ASC CAPS	2/25/13	DSW	.XX ±.03	
	C	2759 BACK TO VISHAY	8/15/11	DSW	.XXX ±.01	
	B	2722 ASC CAP TRIAL	2/11/11	DSW	FRACTIONAL ± 1/32	
	A	2702 RVSD UL SHIELD	1/24/11	RJC	ANGULAR ± 1/2°	
NO	REVISION	DATE	BY	SCALE	SIZE	