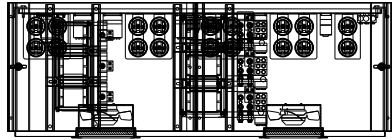
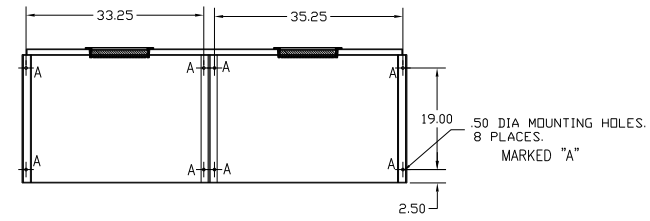
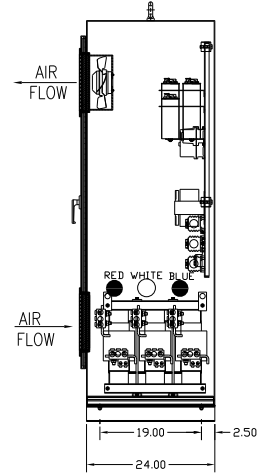
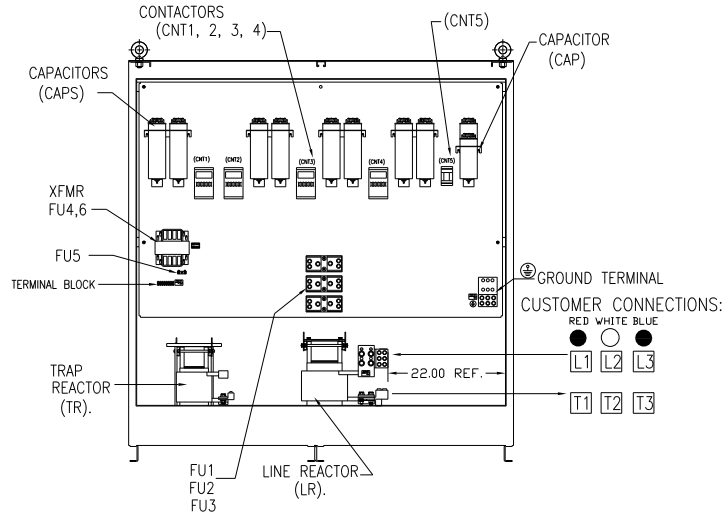
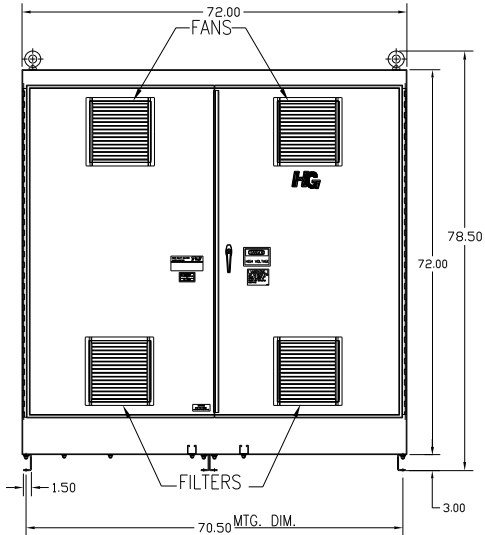
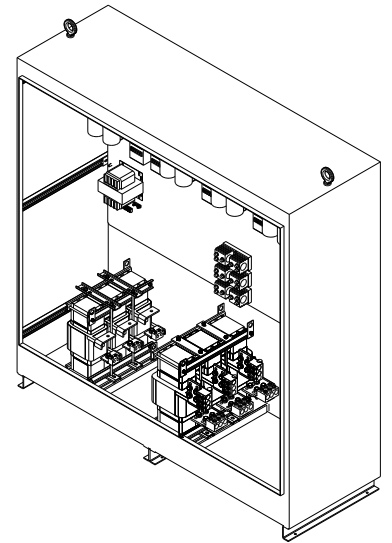


# HG500LW01STC

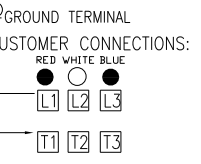
UNIT SPECIFICATIONS:					
KW	HARMONIC	VOLT	HZ	PHASE	FLA
500	5TH	400	50	3	890
ENCLOSURE		NEMA 1			
APPROX.WT. LBS.		1650			



FOR SCHEMATIC SEE DWG# 27703-1



SYMBOL	TCI PART NUMBER
LR	KDRY32T
TR	KTR203L55HG
CAP1-17 (20 KVAR)	KCAP20A6B
CAP18 (10 KVAR)	KCAP10A6B
XFMR.	24879
Fu1, 2, 3	13328
Fu4,6	26122
Fu5	13167
CNT1, 2, 3, 4	19246
CNT5	23048



GROUND LUG:  
WIRE RANGE-THREE 600MCM-2  
TIGHTENING TORQUE 375 IN-LB.

CUSTOMER IS RESPONSIBLE FOR INSTALLATION TO MEET ALL NATIONAL AND LOCAL ELECTRICAL CODES.

CUSTOMER CONNECTIONS:  
WIRE RANGE-THREE 600MCM-2  
TIGHTENING TORQUE 375 IN-LB.

NO	REVISION	DATE	BY	TOLERANCES (EXCEPT AS NOTED)
A	AS BUILT	3/30/2011	DSW	DECIMAL XX ± .03 XXX ± .01
				FRACTIONAL ± 1/32
				ANGULAR ± 1/2°

**TCI** 7878 N. 86th STREET MILWAUKEE, WI 53224

TCI, HG7 Standard, 500kW 400/3/50, Type1, CNT.

DRN BY: DSW DATE: 3/30/2011 DWG NO: B 104675DG  
SCALE: -- APPRVD: B SH.1 OF 1