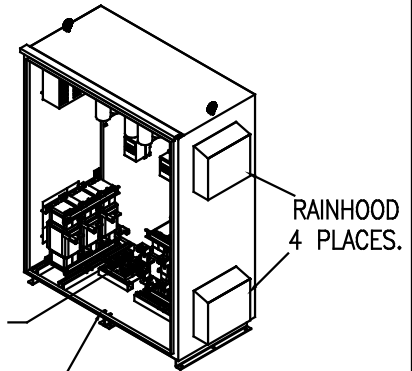
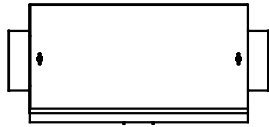
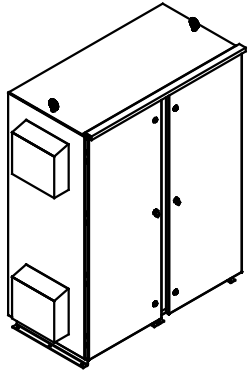


SEE DWG# 26964-2 FOR SCHEMATIC

CUSTOMER IS RESPONSIBLE FOR INSTALLATION TO MEET ALL NATIONAL AND LOCAL ELECTRICAL CODES.

NOTE: USE ONLY HUBS OR FITTINGS THAT COMPLY WITH UL514B FOR TYPE 3R ENCLOSURES.

UNIT SPECIFICATIONS:					
KVAR	HARMONIC	VOLT	HZ	PHASE	HP
150	5TH	600	60	3	500
ENCLOSURE		TYPE 3R- COLOR, WHITE			
APPROX.WT. LBS		1161			



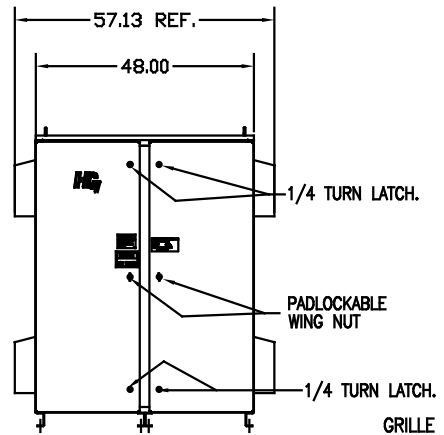
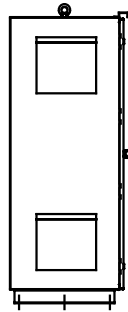
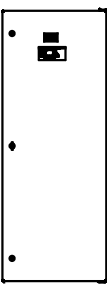
RAINHOOD
4 PLACES.

FU1
FBLK
FU2
FU3

REMOVEABLE
CENTER CHANNEL

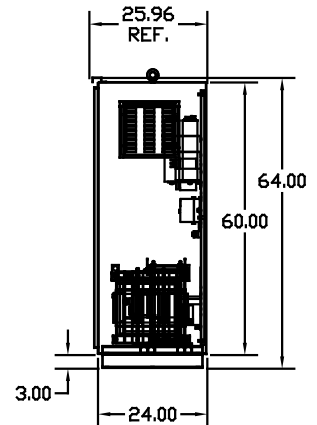
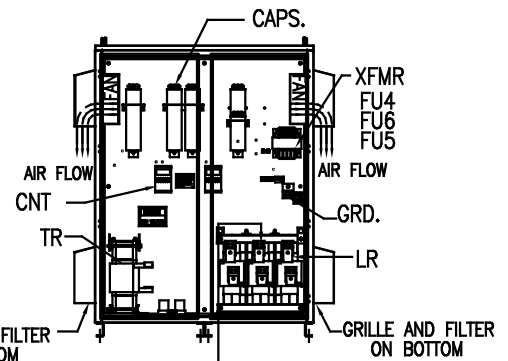
INSIDE
DOOR

SIDE VIEW



FRONT VIEW
WITH DOORS.

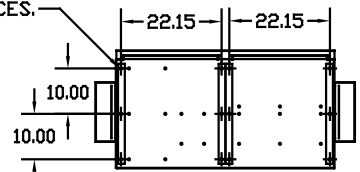
FRONT VIEW
WITHOUT DOORS



SIDE VIEW

.50 DIA HOLES
12 PLACES.

L1 L2 L3 T1 T2 T3
SUGGESTED CUSTOMER WIRE ENTRY
AND EXIT LOCATION



BOTTOM VIEW

CUSTOMER INPUT/OUTPUT
CONNECTIONS:
WIRE RANGE-TWO 600MCM-2
TIGHTENING TORQUE 500 IN-LB.

GROUND LUG:
WIRE RANGE-TWO 600MCM-2
TIGHTENING TORQUE 500 IN-LB.

SYMBOL	TCI PART NUMBER
LR	KDRY41T
TR	KTR150C65HG
(20 KVAR) 7 PLACES.	KCAP20C6B
(10 KVAR) 1 PLACE.	KCAP10C6B
XFMR.	24389
Fu1,2,3	12462
Fu4,6	24390
Fu5	23977

NO	REVISION	DATE	BY	TOLERANCES EXCEPT AS NOTED DECIMAL .XX ±.12 .XXX±.06 FRACTIONAL ± 1/32 MILLAR ± 1/2"	SCALE TO FIT	DATE 02/26/09	DRW BY DSW	CHK BY D	PROJ NO 103649DG	SHT. 1 OF 1

TCI 7878 N. 86th STREET
MILWAUKEE, WI 53224

HG500CW03ST, 500HP
600/3/60 UL TYPE 3R