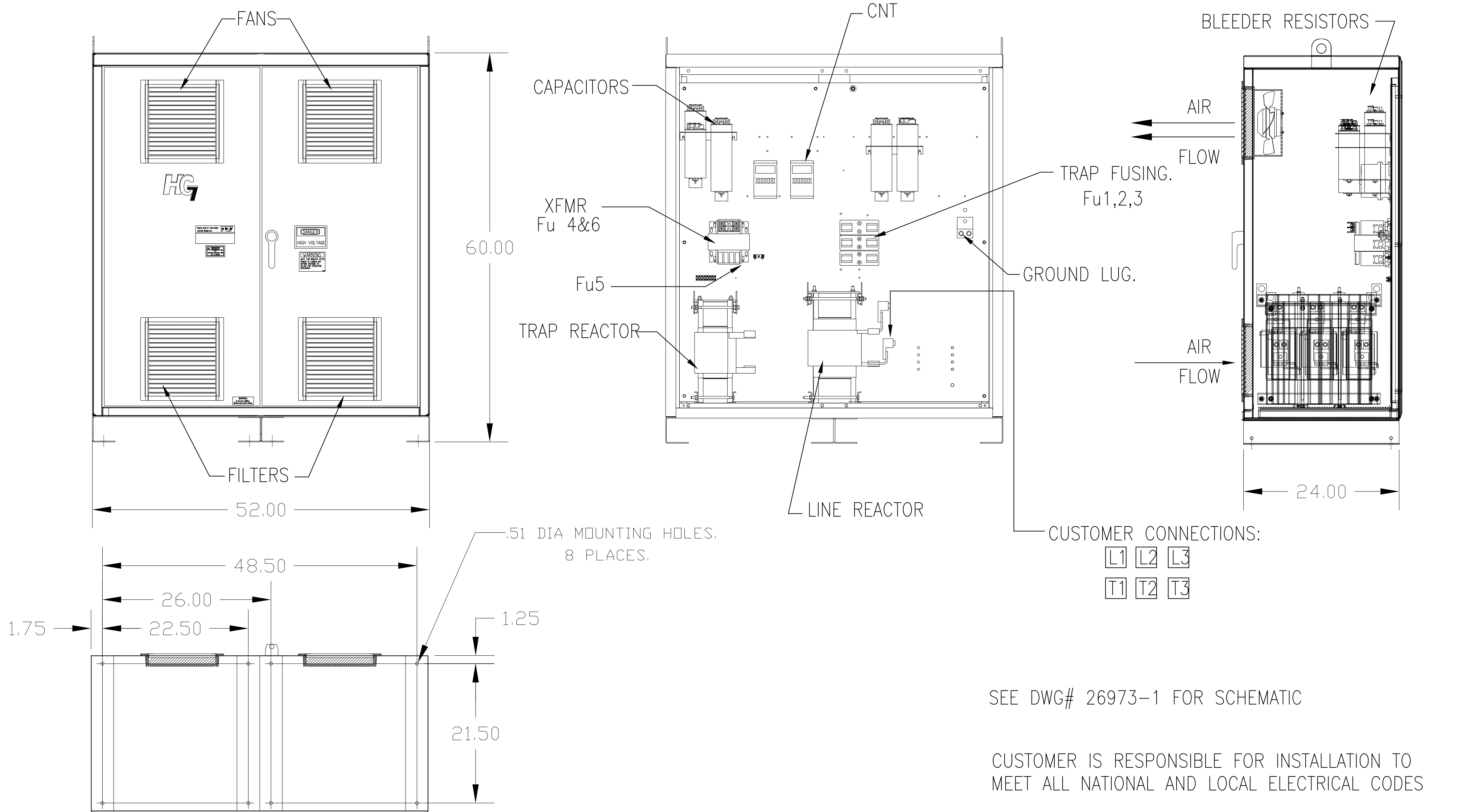


| UNIT SPECIFICATIONS: | | | | | |
|----------------------|----------------|----|-------|-----|--|
| KVAR HARMONIC | VOLT | HZ | PHASE | HP | |
| 150 5TH | 600 | 60 | 3 | 500 | |
| ENCLOSURE | NEMA 1 | | | | |
| FEATURES | WITH CONTACTOR | | | | |
| APPROX.WT. LBS. | 1310 | | | | |

| SYMBOL | TCI PART NUMBER |
|---------------------|-----------------|
| LR | KDRY41T |
| TR | KTR150C65HG |
| (20 KVAR) 7 PLACES. | KCAP20C6B |
| (10 KVAR) 1 PLACE. | KCAP10C6B |
| Fu1a;2a;3a | 12462 |
| Fu4,6 | 24390 |
| Fu5 | 23977 |
| CNT | 19246 |



CUSTOMER CONNECTIONS:
 L1 L2 L3
 T1 T2 T3

SEE DWG# 26973-1 FOR SCHEMATIC

CUSTOMER IS RESPONSIBLE FOR INSTALLATION TO MEET ALL NATIONAL AND LOCAL ELECTRICAL CODES

GROUND LUG:
 WIRE RANGE-TWO 600MCM-2
 TIGHTENING TORQUE 500 IN-LB.

CUSTOMER CONNECTIONS:
 WIRE RANGE-TWO 600MCM-2
 TIGHTENING TORQUE 500 IN-LB.

| | | | | | | | |
|------|---------------|---------|-----|-------------------------------|--|--|--|
| | | | | TOLERANCES (EXCEPT AS NOTED): | | W132 N10611 Grant Drive Germantown, WI 53022 | |
| | | | | DECIMAL | | | |
| | | | | .XX ± .03 | | HG500CW01STC, HG7 500 HP, 600/3/60, TYPE 1 | |
| | | | | .XXX ± .01 | | | |
| | | | | FRACTIONAL | | DRN. BY DSW DATE 03/19/09 DWG. NO. 103563DG SCALE TO FIT APRVD. C | |
| | | | | ± 1/32 | | | |
| 4077 | COLOR REMOVED | 7/25/17 | JRN | ANGULAR | | SHT.1 OF1 | |
| NO | REVISION | DATE | BY | ± 1/2° | | | |