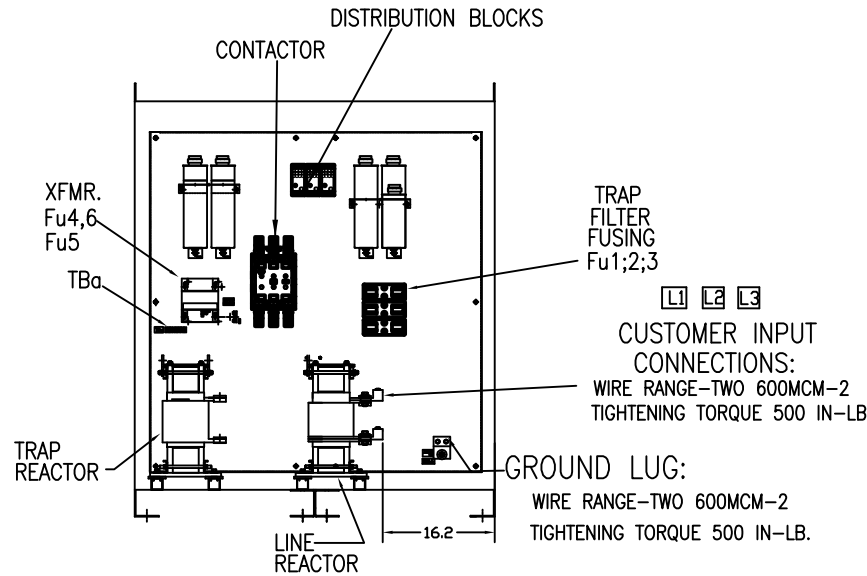
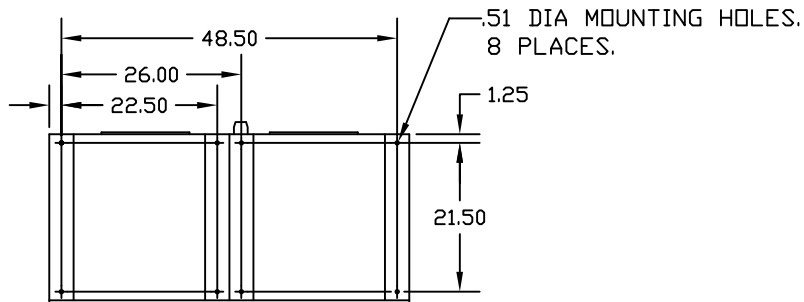
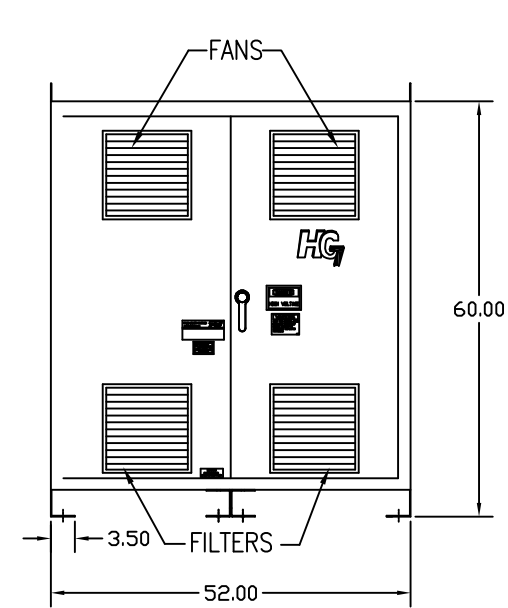


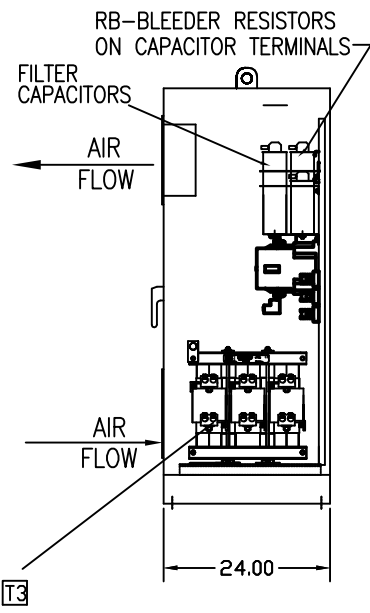
UNIT SPECIFICATIONS:						
KVAR	HARMONIC	VOLT	HZ	PHASE	HP	
150	5TH	480	60	3	500	
ENCLOSURE		NEMA 1				
APPROX.WT. LBS.		1025				

SYMBOL	HG500AW01STC
LR	X
TR	X
CAPS	X
CONTACTORS	X
XFMR.	X
Fu1a;2a;3a	X
Fu4,6	X
Fu5	X
DB	X



L1 L2 L3
 CUSTOMER INPUT CONNECTIONS:
 WIRE RANGE-TWO 600MCM-2
 TIGHTENING TORQUE 500 IN-LB.

GROUND LUG:
 WIRE RANGE-TWO 600MCM-2
 TIGHTENING TORQUE 500 IN-LB.



T1 T2 T3
 CUSTOMER OUTPUT CONNECTIONS:
 WIRE RANGE-TWO 600MCM-2
 TIGHTENING TORQUE 500 IN-LB.

SEE DWG# 26690-1 FOR SCHEMATIC

CUSTOMER IS RESPONSIBLE FOR INSTALLATION TO MEET ALL NATIONAL AND LOCAL ELECTRICAL CODES

				TOLERANCES (EXCEPT AS NOTED)		TCI	W132 N10611 GRANT DRIVE GERMANTOWN, WI. 53022
				DECIMAL	ANGULAR		
C	3267 CNT CHANGE	7/23/15	BWM	.XX ± .03		HG500AW01STC, HG7,W/CNT 500 HP, 480/3/60/ TYPE 1	DWG. NO. 103519DG
B	2900 CHG TO ASC CAPS	6/7/13	DSW	.XXX± .01			
A	2702 UPDATED PNL LAYOUT	9/2/10	RJC	FRACTIONAL ± 1/32			
A	2702 RVSD FUSEBLK&FUSE	9/2/10	RJC	ANGULAR ± 1/2°			
NO	REVISION	DATE	BY			SCALE TO FIT	APPROV. C