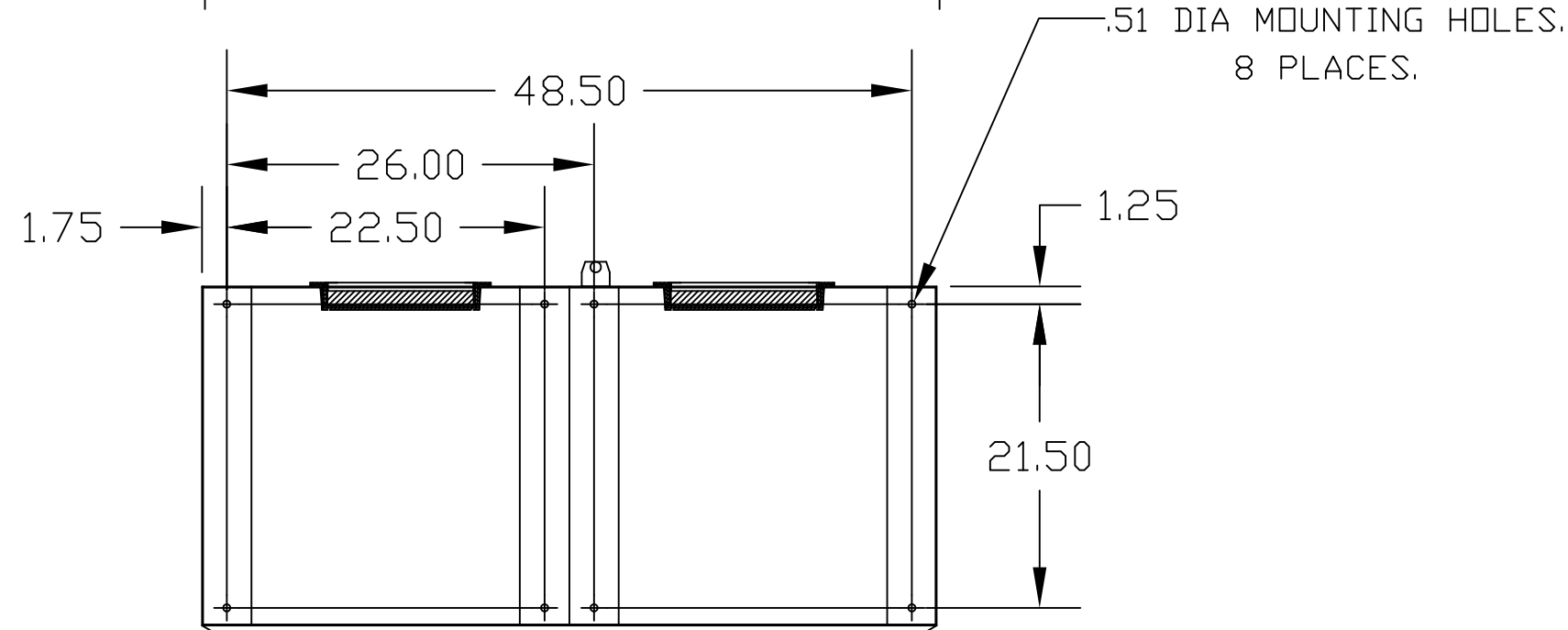
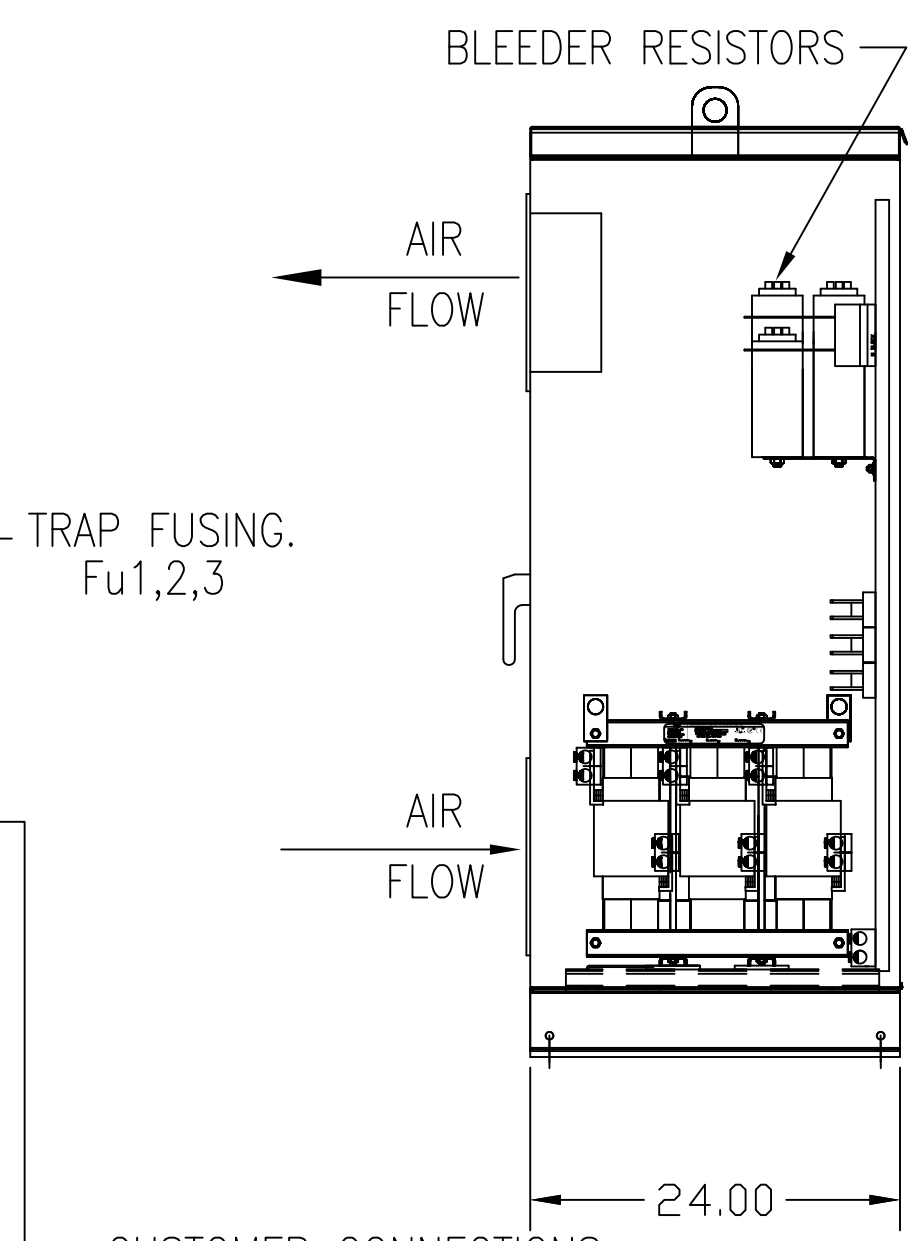
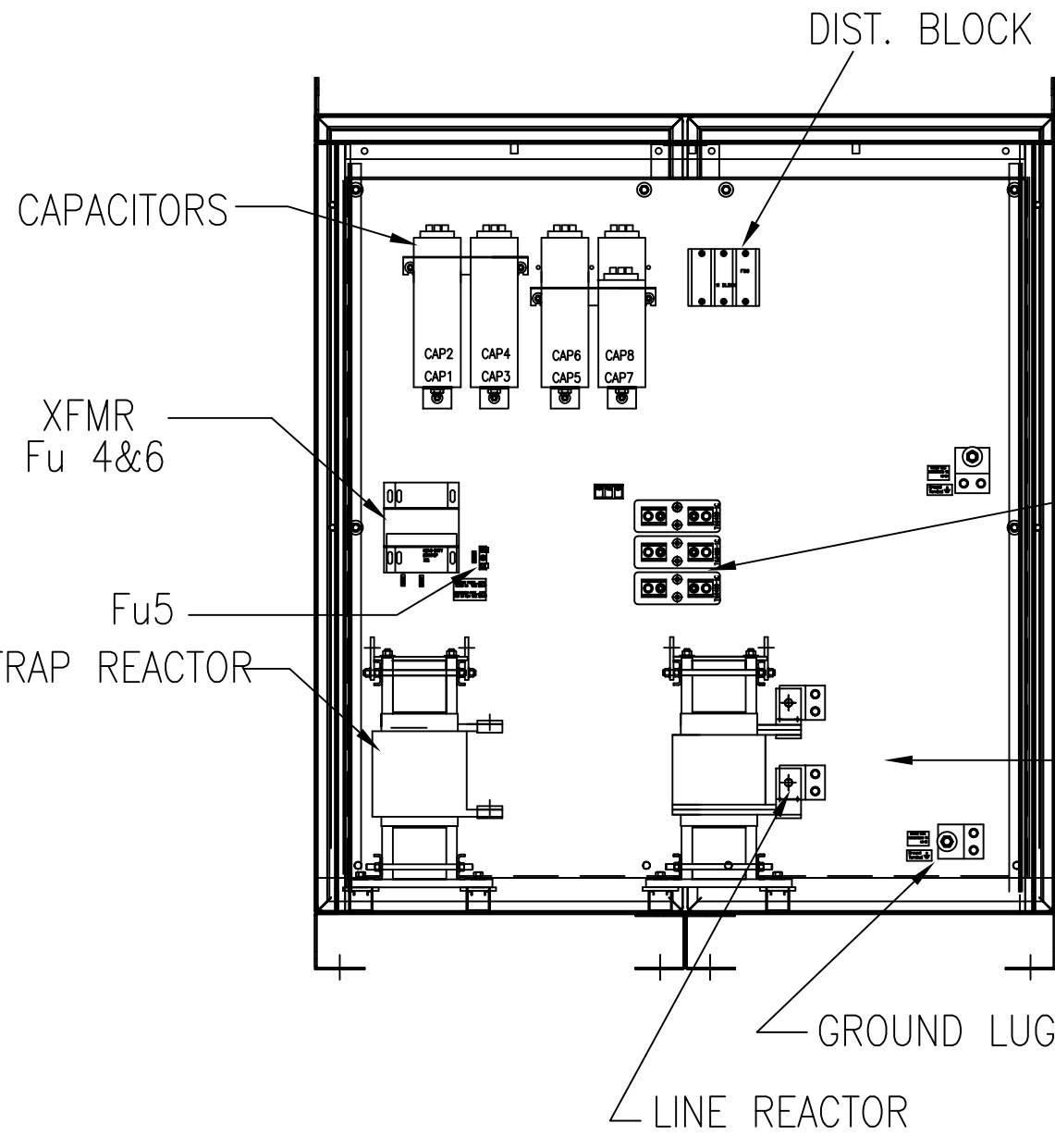
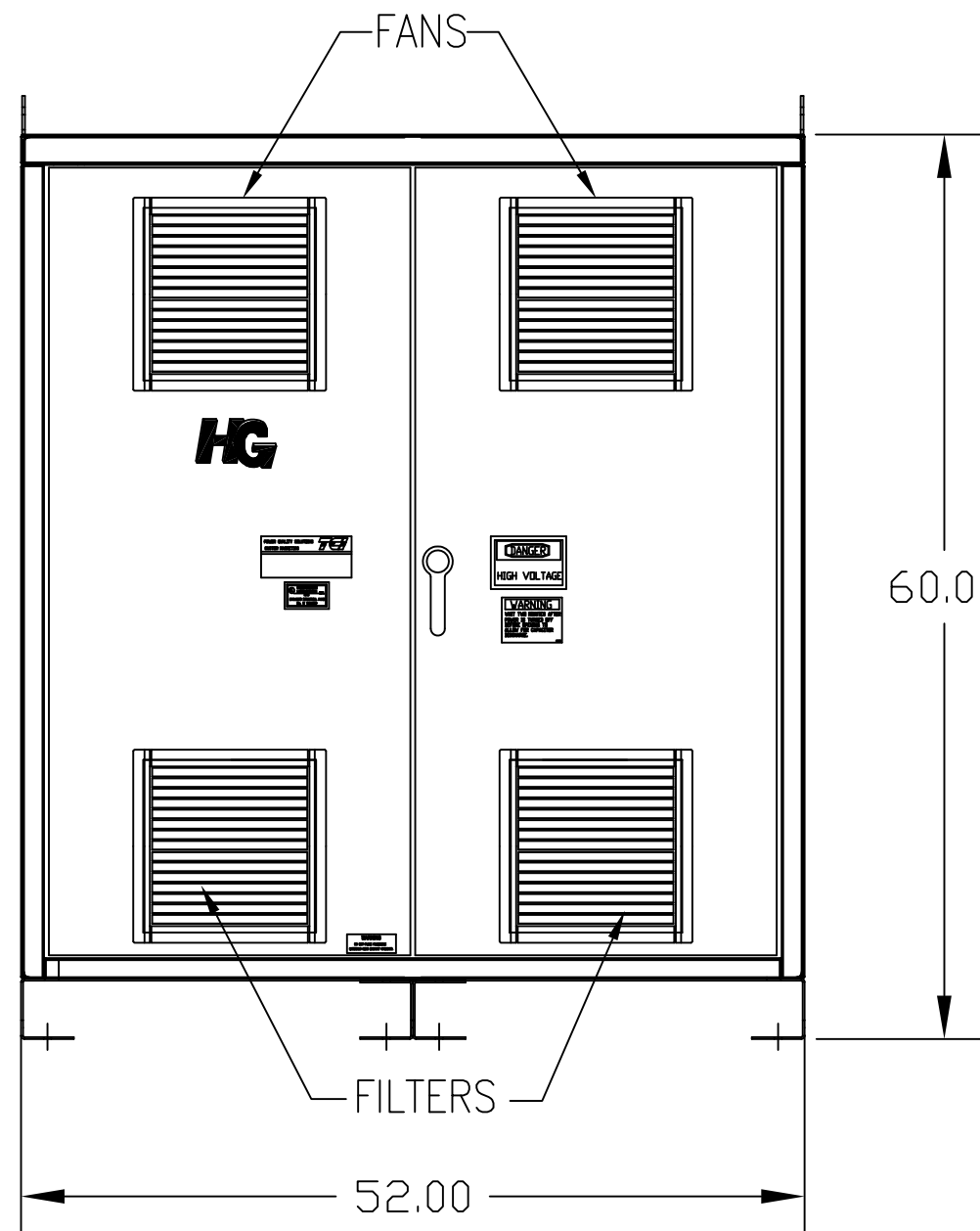


UNIT SPECIFICATIONS:						
KVAR	HARMONIC	VOLT	HZ	PHASE	HP	
150	5TH	480	60	3	500	
ENCLOSURE		NEMA 1				
APPROX.WT. LBS.		1020				

SYMBOL	TCI PART NUMBER
LR	KDRX5T
TR	KTR150A65HG
CAP1 -7 (20 KVAR)	KCAP20A6B
CAP8 (10 KVAR)	KCAP10A6B
XFMR.	23899
Fu1a;2a;3a	13232
Fu4,6	14106
Fu5	23977



CUSTOMER CONNECTIONS:
 L1 L2 L3
 T1 T2 T3

CUSTOMER CONNECTIONS:
 WIRE RANGE-TWO 600MCM-2
 TIGHTENING TORQUE 500 IN-LB.

GROUND LUG:
 WIRE RANGE-TWO 600MCM-2
 TIGHTENING TORQUE 500 IN-LB.

FOR SCHEMATIC SEE 25092
 CUSTOMER IS RESPONSIBLE FOR INSTALLATION TO
 MEET ALL NATIONAL AND LOCAL ELECTRICAL CODES

TCI, LLC CLAIMS PROPRIETARY RIGHTS IN THE MATERIAL HEREIN DISCLOSED. IT IS SUPPLIED WITHOUT PREJUDICE TO ANY PATENT RIGHTS OF TCI AND MAY NOT BE REPRODUCED OR USED TO MANUFACTURE ANYTHING SHOWN THEREIN WITHOUT WRITTEN PERMISSION FROM TCI.				TOLERANCES (EXCEPT AS NOTED): DECIMAL	W132 N10611 Grant Drive Germantown, WI 53022	
	B	ADDED DIST BLACK	8/1/11	RJC		.XX ±.03
	A	2516, CAP WAS 23123				FRACTIONAL ± 1/32
		AND 16448	9/30/07	RJC		ANGULAR ± 1/2°
	NO	REVISION	DATE	BY		

HG500AW01ST, HG7 STANDARD 500HP, 480/3/60, TYPE 1		DRN. BY DSW SCALE TO FIT	DATE 06/10/05 SIZE C	DWG. NO. 102685DG SHT.1 OF 1
--	--	-----------------------------	-------------------------	---------------------------------