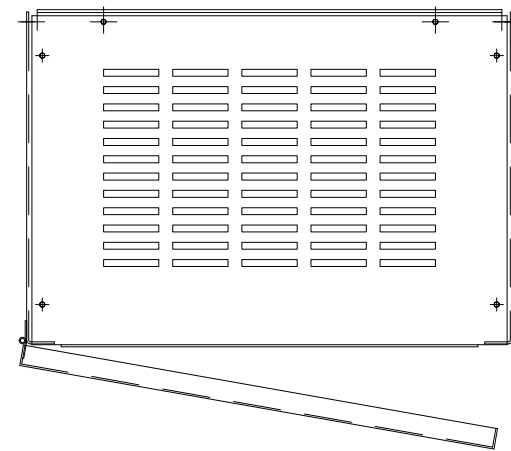
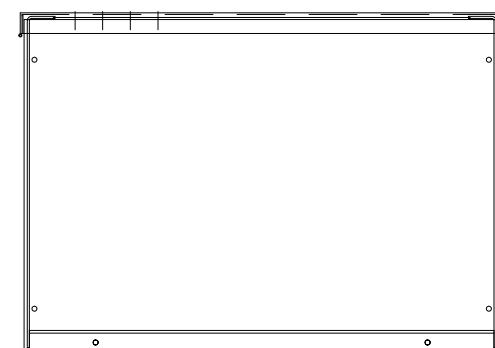
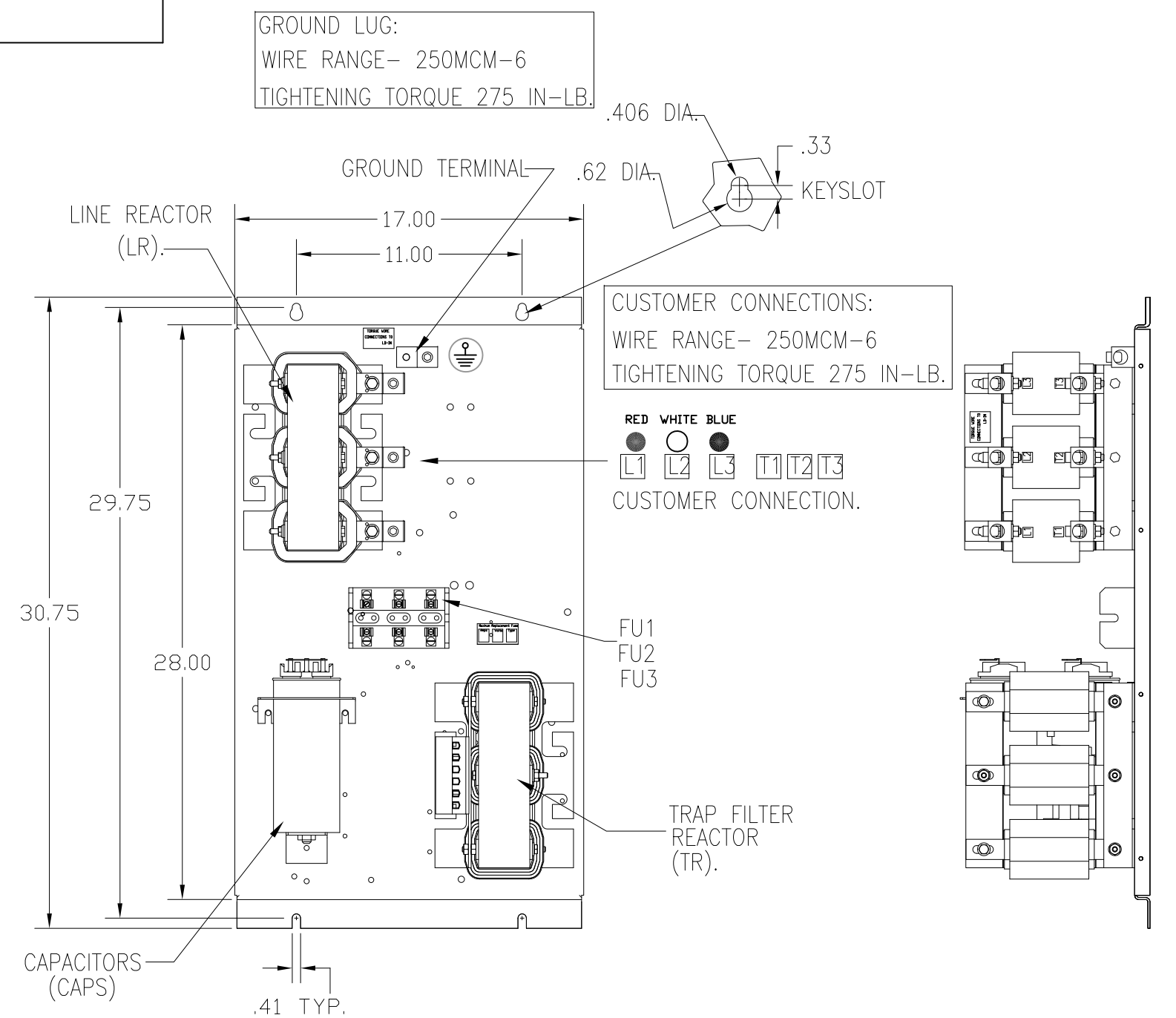
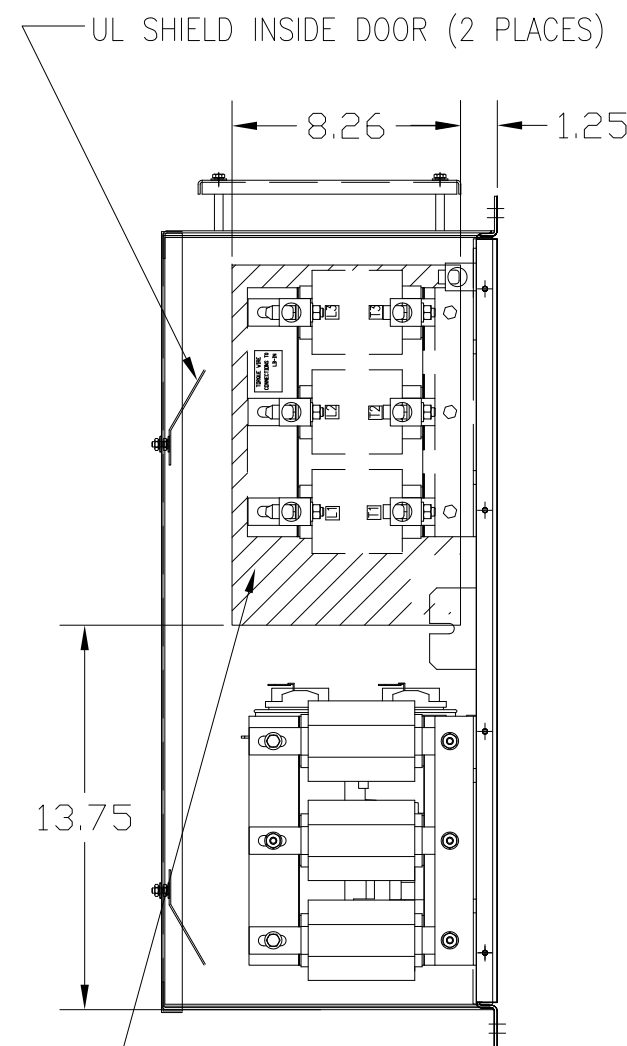
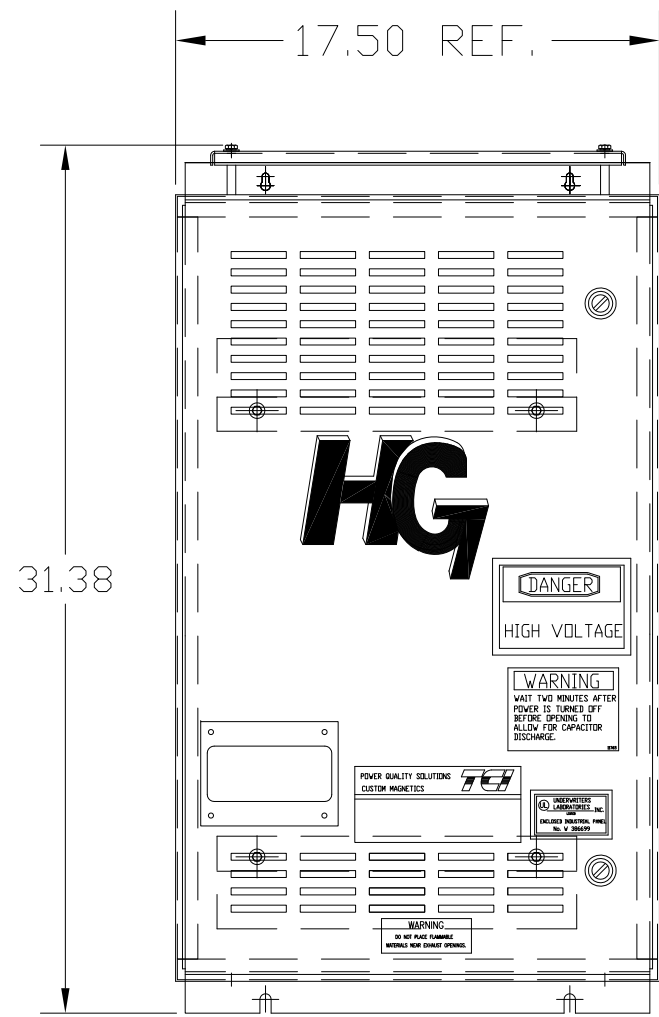
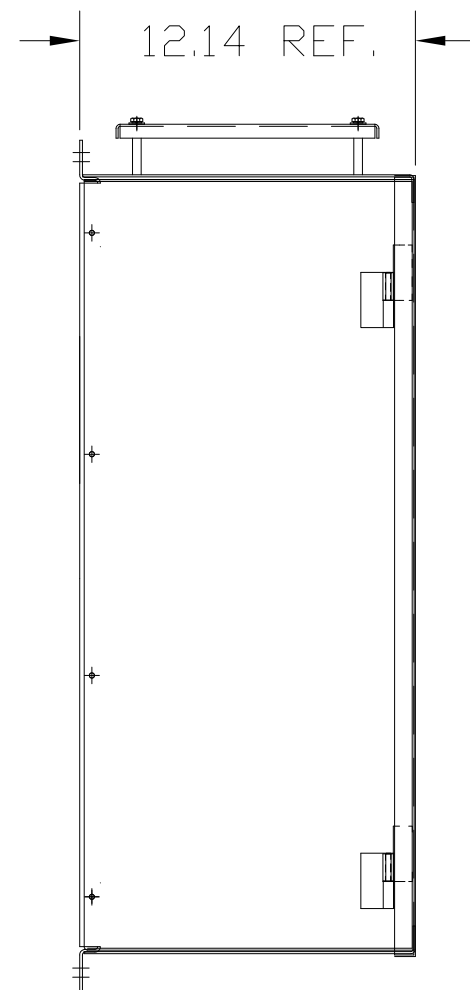


UNIT SPECIFICATIONS:					
KW	HARMONIC	VOLT	HZ	PHASE	FLA
45	5TH	400	50	3	90
ENCLOSURE		NEMA 1			
APPROX. WT. LBS.		186			



SYMBOL	TCI PART NUMBER
LR	KDRG33T
TR	KTR18L55HG
CAP1. (15 KVAR)	KCAP15A6B
CAP2. (15 KVAR)	KCAP15A6B
Fu1, 2, 3	22926



HATCHED AREAS ARE SUGGESTED CUSTOMER WIRE AND EXIT LOCATIONS (BOTTOM ENTRANCE ALTERNATE-CONSULT TCI)

ENCLOSURE NOT SHOWN

CUSTOMER IS RESPONSIBLE FOR INSTALLATION TO MEET ALL NATIONAL AND LOCAL ELECTRICAL CODES.

TCI, LLC CLAIMS PROPRIETARY RIGHTS IN THE MATERIAL HEREIN DISCLOSED. IT IS SUPPLIED WITHOUT PREJUDICE TO ANY PATENT RIGHTS OF TCI AND MAY NOT BE REPRODUCED OR USED TO MANUFACTURE ANYTHING SHOWN THEREIN WITHOUT WRITTEN PERMISSION FROM TCI.				TOLERANCES (EXCEPT AS NOTED):	W132 N10611 Grant Drive Germantown, WI 53022
				DECIMAL	
				.XX ±.03	
				.XXX ±.01	
				FRACTIONAL	HG45LW01ST, 45KW 400/3/50, ENCLOSED
			± 1/32		
			ANGULAR		
	AS BUILT	11/04/10	DSW	± 1/2°	DRN. BY DSW DATE 11/17/2010 DWG. NO. 104511DG
	REVISION	DATE	BY	SCALE TO FIT	SIZE C SHT.1 OF 1