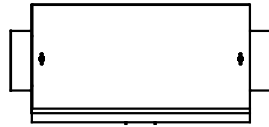


SEE DWG# 26964 FOR SCHEMATIC

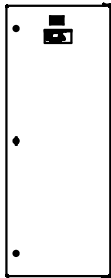
CUSTOMER IS RESPONSIBLE FOR INSTALLATION TO MEET ALL NATIONAL AND LOCAL ELECTRICAL CODES.

NOTE: USE ONLY HUBS OR FITTINGS THAT COMPLY WITH UL514B FOR TYPE 3R ENCLOSURES.

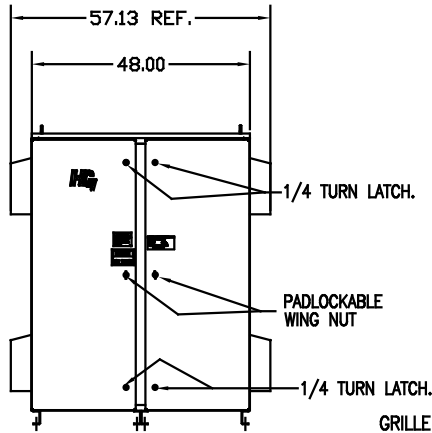
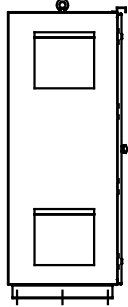
UNIT SPECIFICATIONS:					
KVAR	HARMONIC	VOLT	HZ	PHASE	HP
150	5TH	600	60	3	450
ENCLOSURE		TYPE 3R- COLOR, WHITE			
FEATURES		CONTACTOR, HEATER			
APPROX.WT. LBS		1020			



INSIDE DOOR

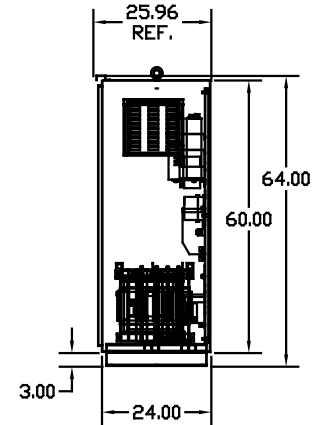
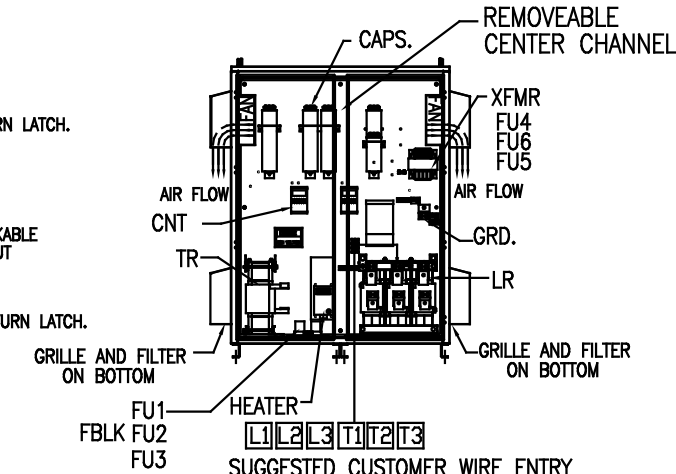


SIDE VIEW

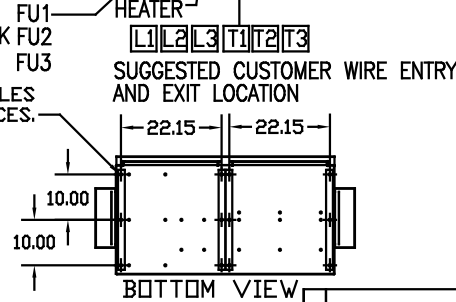


FRONT VIEW WITH DOORS.

FRONT VIEW WITHOUT DOORS



SIDE VIEW



BOTTOM VIEW

**GROUND LUG:**  
WIRE RANGE-TWO 600MCM-2  
TIGHTENING TORQUE 500 IN-LB.

**CUSTOMER INPUT/OUTPUT CONNECTIONS:**  
WIRE RANGE-TWO 600MCM-2  
TIGHTENING TORQUE 500 IN-LB.

SYMBOL	TCI PART NUMBER
LR	KDRX44T
TR	KTR150C65HG
(20 KVAR) 7 PLACES.	KCAP20C6B
(10 KVAR) 1 PLACE.	KCAP10C6B
XFMR.	24389
Fu1,2,3	12462
Fu4,6	24390
Fu5	23977
CNT	19246
HEATER (800W)	24301
XFMR (HS10F1BS)	25689
Fu7,8	25693

NO	REVISION	DATE	BY	TOLERANCES EXCEPT AS NOTED: DECIMAL .XX ±.12 .XXX ±.06 FRACTIONAL ± 1/32 MILLAR ± 1/2"	SCALE TO FIT	DATE 02/18/09	DRW BY DSW	CHK BY D	DATE 02/18/09	103758DG

**TCI** 7878 N. 86th STREET MILWAUKEE, WI 53224

HG450CW03STCH, 450HP  
600/3/60 UL TYPE 3R

SHT. 1 OF 1