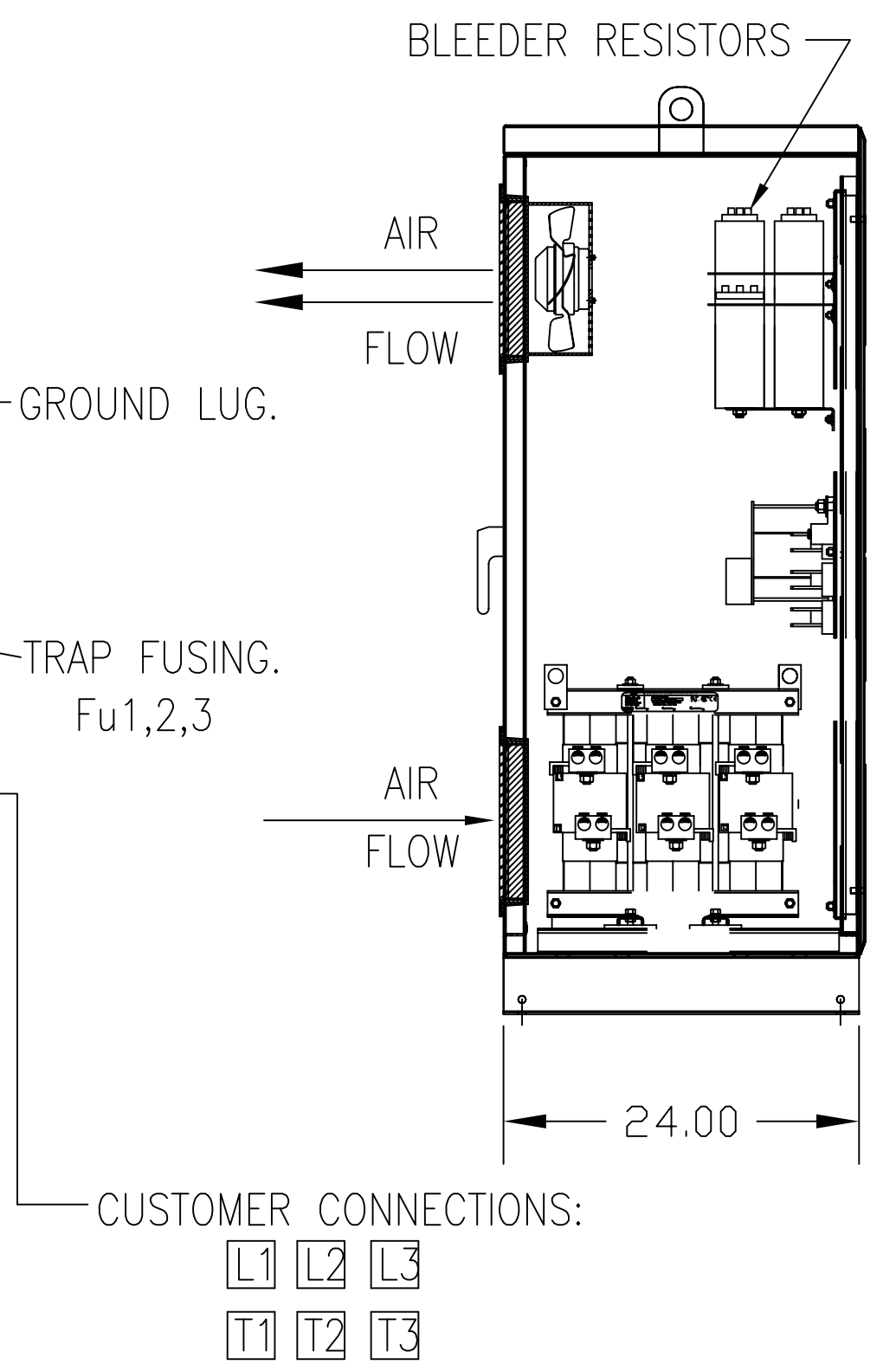
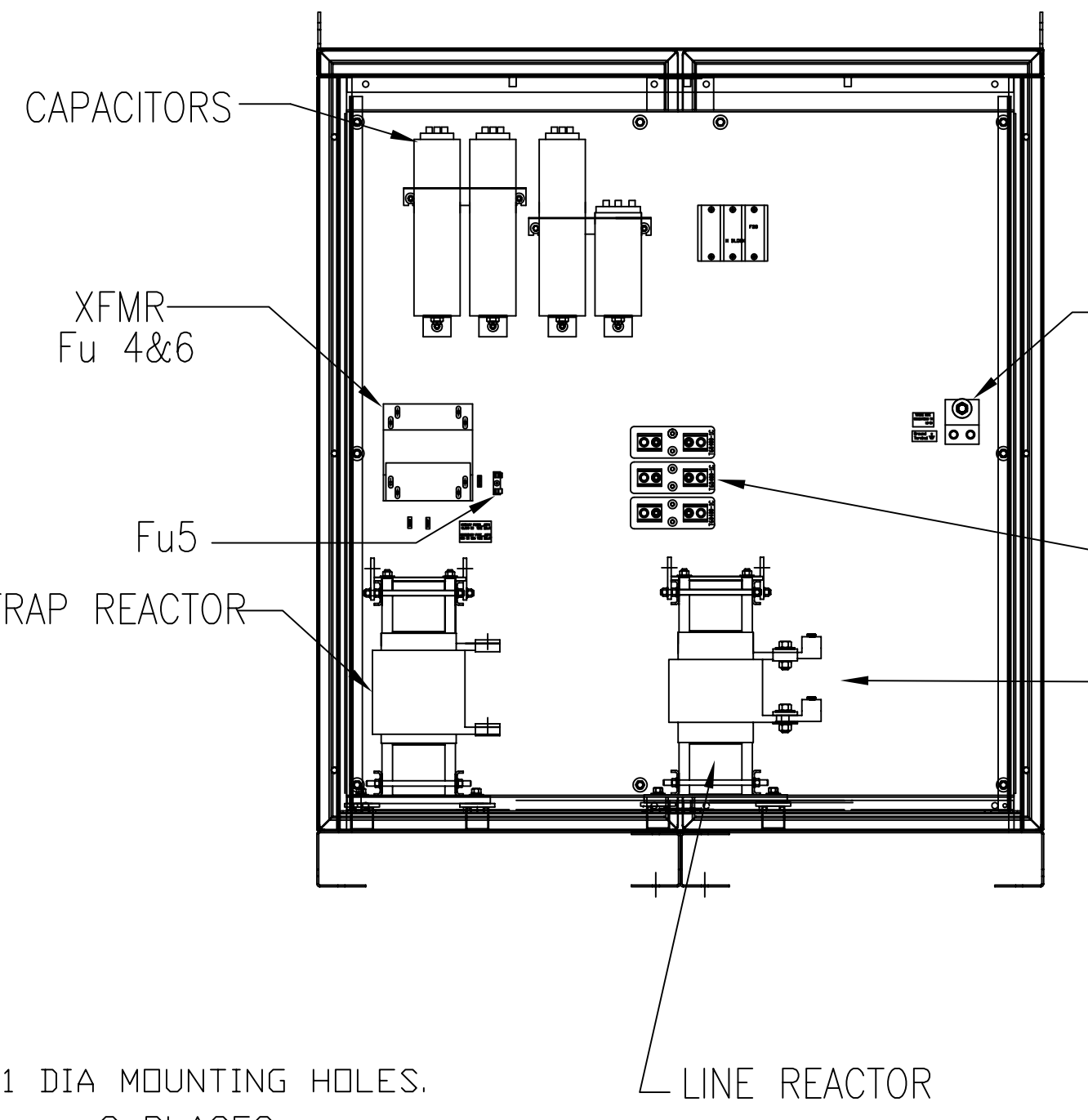
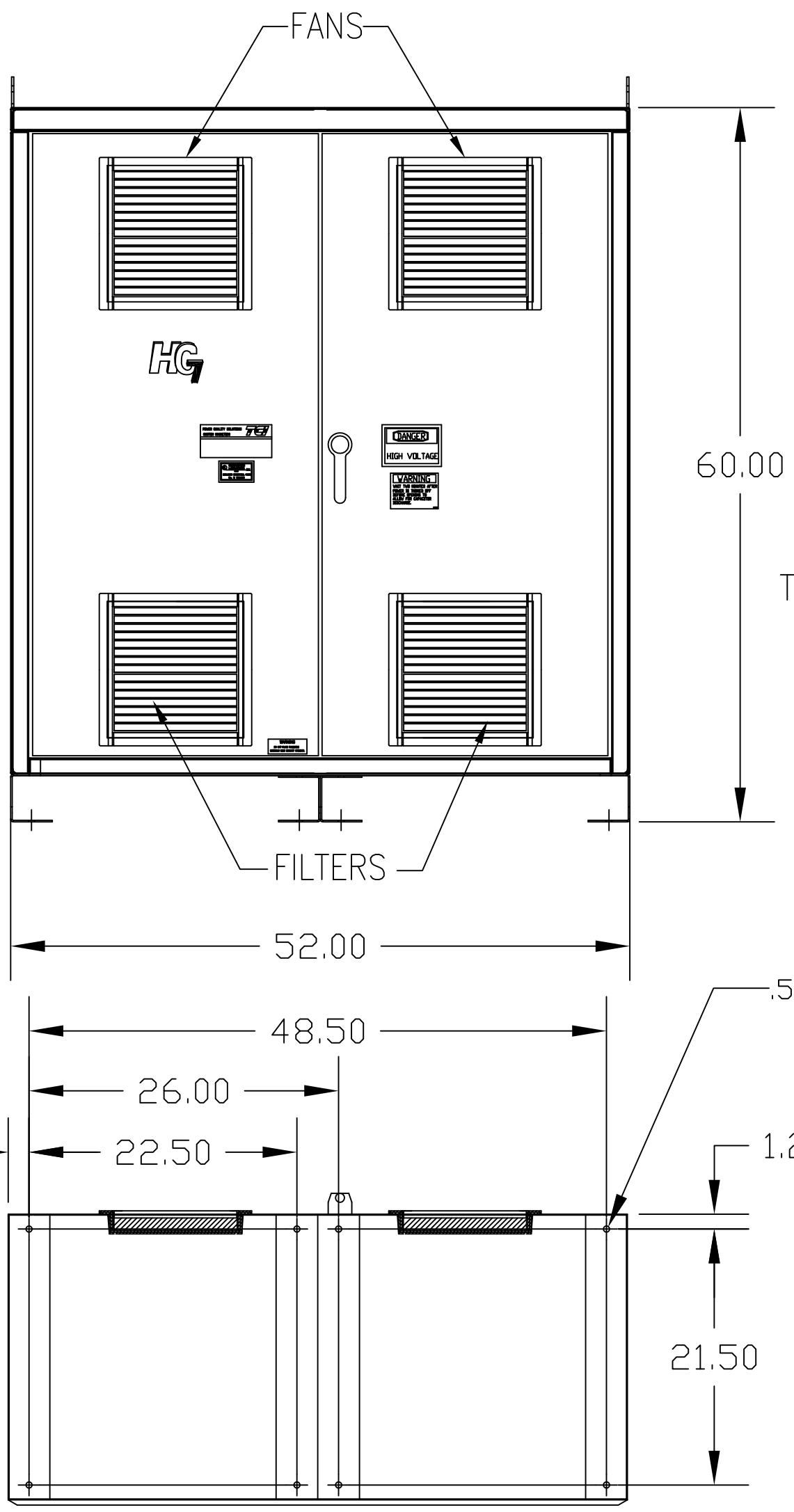


| UNIT SPECIFICATIONS: |          |        |    |       |     |
|----------------------|----------|--------|----|-------|-----|
| KVAR                 | HARMONIC | VOLT   | HZ | PHASE | HP  |
| 135                  | 5TH      | 600    | 60 | 3     | 450 |
| ENCLOSURE            |          | NEMA 1 |    |       |     |
| APPROX.WT. LBS.      |          | 1200   |    |       |     |

| SYMBOL            | TCI PART NUMBER |
|-------------------|-----------------|
| LR                | KDRX44T         |
| TR                | KTR135C65HG     |
| CAP1 -6 (20 KVAR) | KCAP20C6B       |
| CAP7 (15 KVAR)    | KCAP15C6B       |
| XFMR.             | 25292           |
| Fu1a;2a;3a        | 12462           |
| Fu4,6             | 24390           |
| Fu5               | 23977           |



CUSTOMER CONNECTIONS:  
WIRE RANGE-TWO 600MCM-2  
TIGHTENING TORQUE 500 IN-LB.

GROUND LUG:  
WIRE RANGE-TWO 600MCM-2  
TIGHTENING TORQUE 500 IN-LB.

.51 DIA MOUNTING HOLES.  
8 PLACES.

FOR SCHEMATIC SEE 25116

CUSTOMER IS RESPONSIBLE FOR INSTALLATION TO  
MEET ALL NATIONAL AND LOCAL ELECTRICAL CODES

|   |    |  |         |     |                                 |  |
|---|----|--|---------|-----|---------------------------------|--|
| <small>TCI, LLC CLAIMS PROPRIETARY RIGHTS IN THE MATERIAL HEREIN DISCLOSED. IT IS SUPPLIED WITHOUT PREJUDICE TO ANY PATENT RIGHTS OF TCI AND MAY NOT BE REPRODUCED OR USED TO MANUFACTURE ANYTHING SHOWN THEREIN WITHOUT WRITTEN PERMISSION FROM TCI.</small> | B  | WAS 150 KVAR, 15KVAR                         |         |     | TOLERANCES (EXCEPT AS NOTED):   | W132 N10611 Grant Drive Germantown, WI 53022<br><b>HG450CW01ST, HG7 STANDARD 450HP, 600/3/60, TYPE 1</b><br><small>DRN. BY DSW DATE 6/21/05 DWG. NO. 102697DG</small><br><small>SCALE TO FIT SIZE C SHT.1 OF 1</small> |
|   |    | 10 KVAR, UPDATED TRAP REACTOR, ADD DIST. BLK | 9/8/11  | RJC | DECIMAL<br>.XX ±.03<br>.XXX±.01 |  |
|   | A  | 2516, CAP WAS 18612                          |         |     | FRACTIONAL<br>± 1/32            |  |
|   |    | CAP WAS 17816                                | 9/30/07 | RJC | ANGULAR<br>± 1/2°               |  |
|   | NO | REVISION                                     | DATE    | BY  |                                 |  |