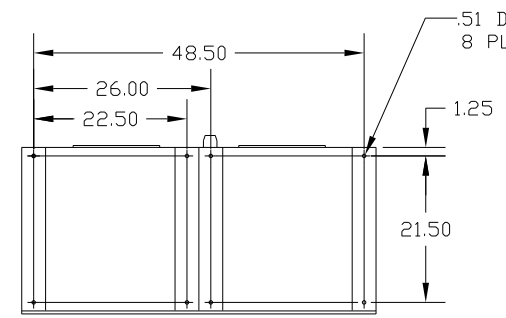
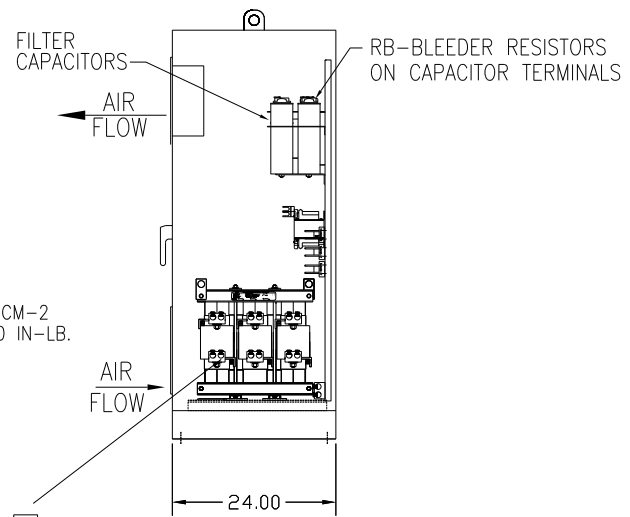
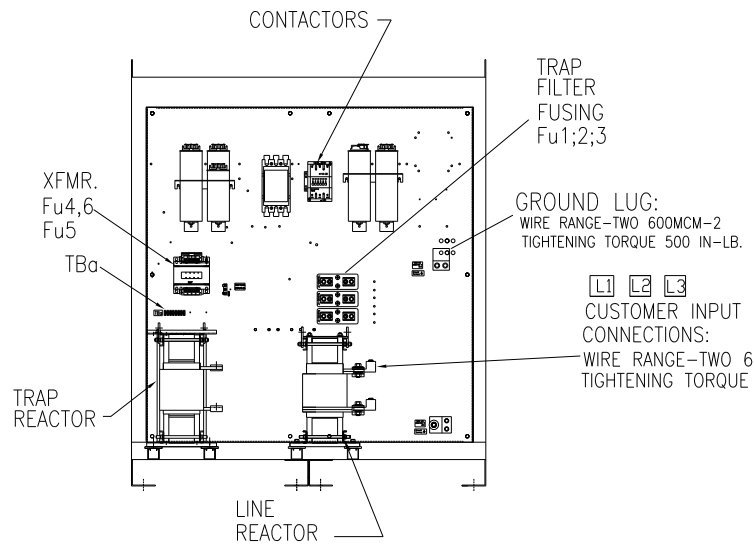
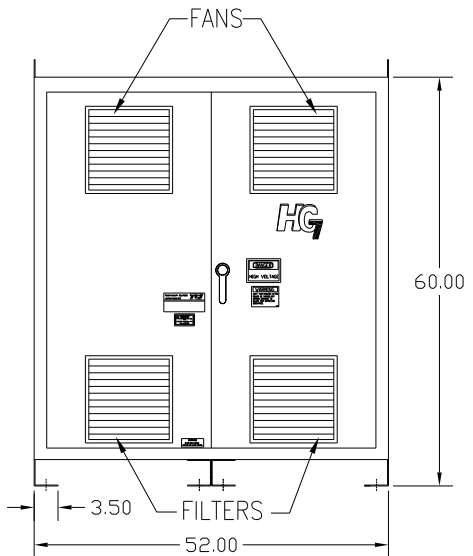


UNIT SPECIFICATIONS:					
KVAR	HARMONIC	VOLT	HZ	PHASE	HP
135	5TH	480	60	3	450
ENCLOSURE		NEMA 1			
APPROX.WT. LBS.		1010			

SYMBOL	TCI PART NUMBER
LR	KDRX4TMD0
TR	KTR135A65HG
CAP1 -6 (20 KVAR)	KCAP20A6B
CAP7 (15 KVAR)	KCAP15A6B
CONTACTOR	23368
CONTACTOR	19246
XFMR.	23899
Fu1a;2a;3a	13232
Fu4,6	14106
Fu5	23977



SEE DWG# 26690-1 FOR SCHEMATIC

CUSTOMER IS RESPONSIBLE FOR INSTALLATION TO MEET ALL NATIONAL AND LOCAL ELECTRICAL CODES

				TOLERANCES (EXCEPT AS NOTED):		TCI 7878 N. 86th STREET MILWAUKEE, WI 53224	
				DECIMAL		HG450AW01STC, HG7,W/CNT 450 HP, 480/3/60/ TYPE 1	
B				.XX ± .03			
				.XXX ± .01			
TRAP REACTOR, CHART				8/26/11	RJC	FRACTIONAL ± 1/32	
A 2702 RVSD FUSEBLK&FUSE				9/2/10	RJC	ANGULAR ± 1/2°	
NO REVISION				DATE	BY	SCALE TO FIT	APPROV
						DWG NO. 103518DG	
						SHT. 1 OF 1	