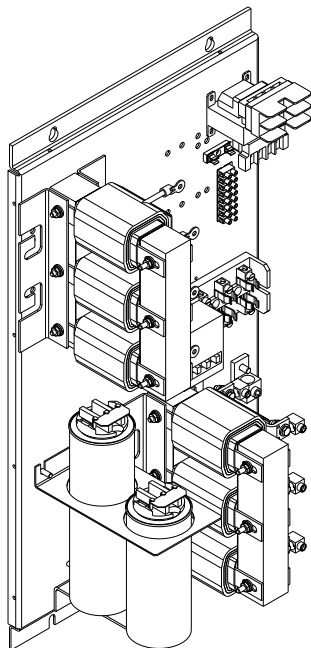
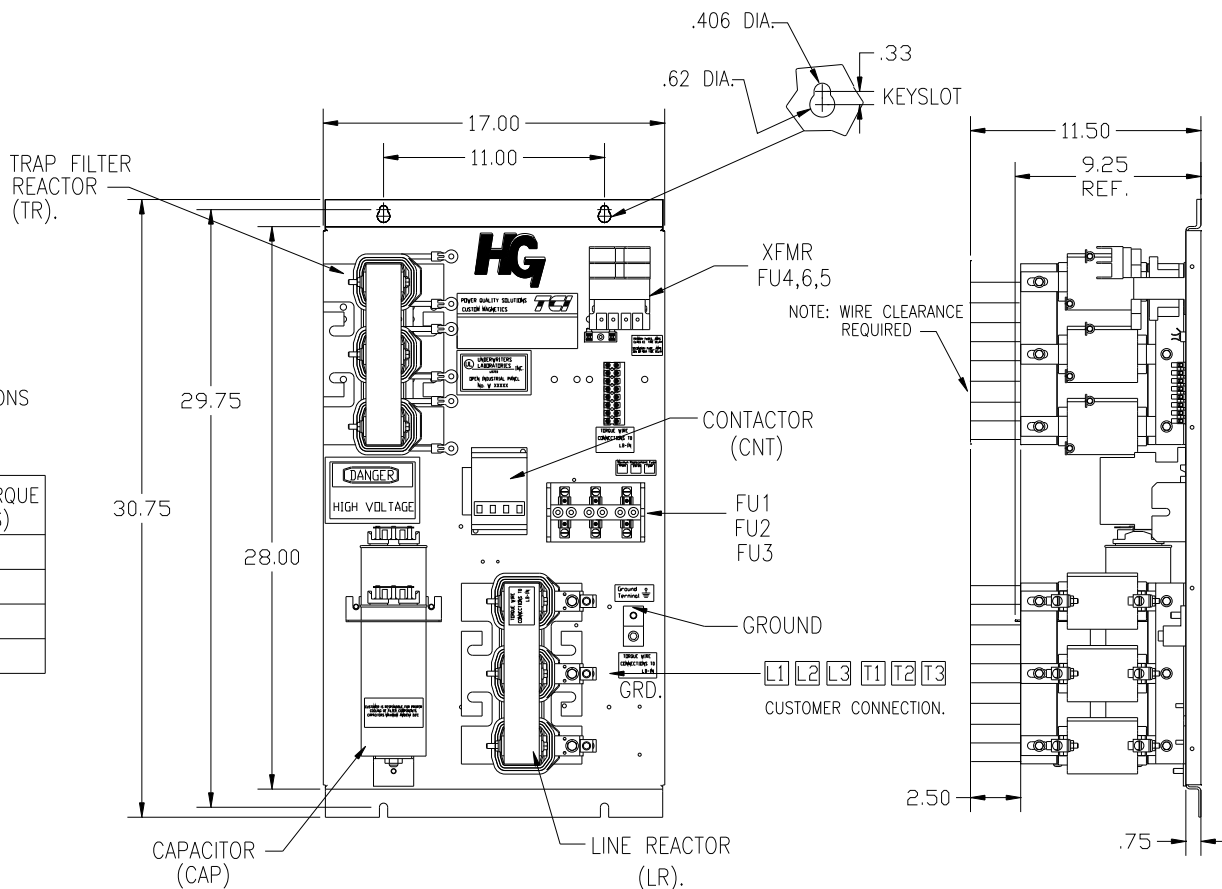


SEE 26824 FOR SCHEMATIC



UNIT SPECIFICATIONS:					
KVAR HARMONIC	VOLT	HZ	PHASE	HP	
15	5TH	240	60	3	40
ENCLOSURE		WHITE OPEN PANEL			
		WITH CONTACTOR			
APPROX.WT. LBS.		105			



HG40BW00STC	
COMPONENTS	
LINE REACTOR LR	X
TRAP REACTOR TR	X
CAPACITOR CAP	X
TRAP FUSING FU1,2,3	X
XFMR	X
XFMR FU4,6	X
XFMR FU5	X
CNT	X

CUSTOMER CONNECTIONS
L1 L2 L3 T1 T2 T3
 AND GROUND LUG.

WIRE SIZE (AWG)	RATED TORQUE (IN-LBS)
2/0-3	50
4-6	45
8	40
10-14	35

CUSTOMER IS RESPONSIBLE FOR PROPER COOLING OF FILTER COMPONENTS. CAPACITORS MAXIMUM AMBIENT 50°C.

CUSTOMER IS RESPONSIBLE FOR INSTALLATION TO MEET ALL NATIONAL AND LOCAL ELECTRICAL CODES.

				TOLERANCES (EXCEPT AS NOTED)	7878 N. 86th STREET MILWAUKEE, WI 53224 HG40BW00STC, 40HP 240/3/60, OPEN, WITH CNT
				DECIMAL	
				.XX ± .03 .XXX ± .01	
				FRACTIONAL ± 1/32	
A	3042 LUG TORQ CHG	2/27/14	BMZ	ANGULAR ± 1/2°	DRN. BY DSW DATE 10/09/08 DWG. NO. 103605DG
NO	REVISION	DATE	BY	SCALE TO SCALE	SHT. 1 OF 1