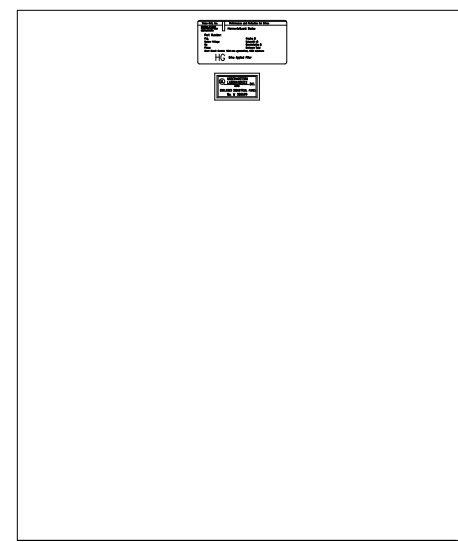
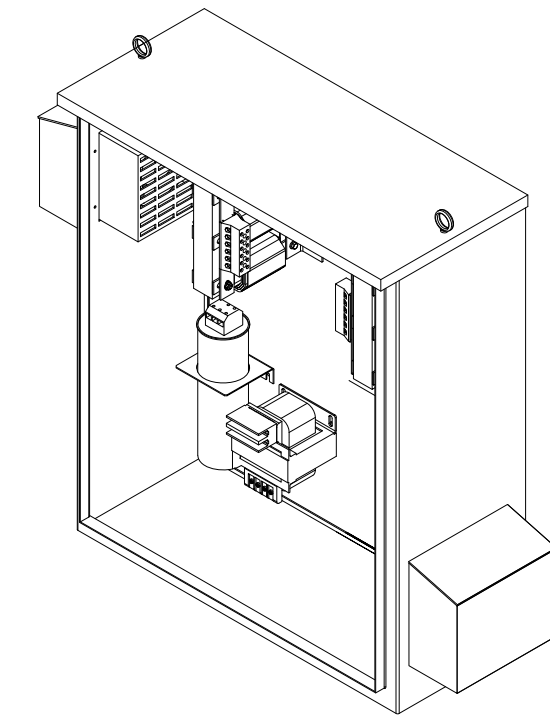
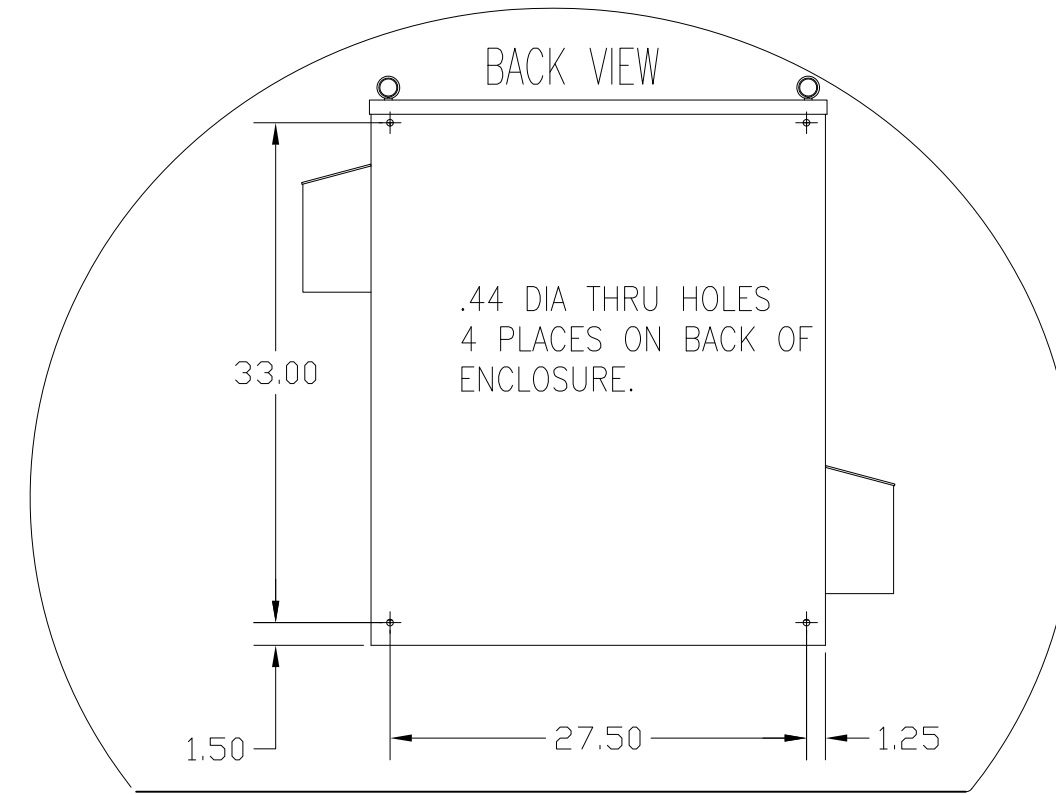
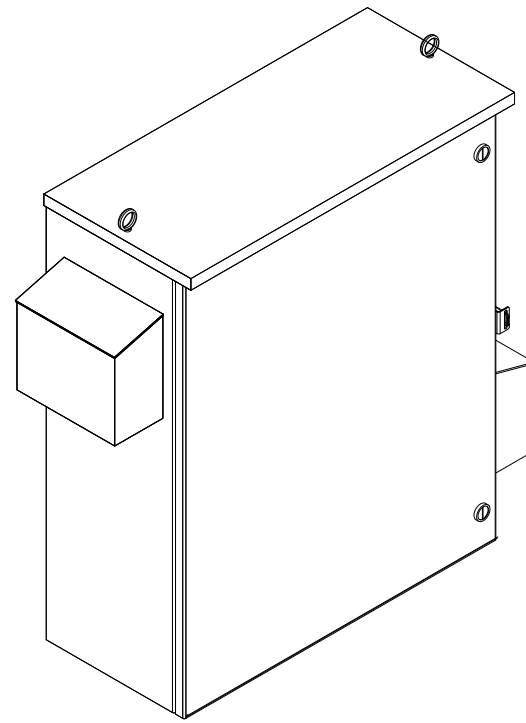


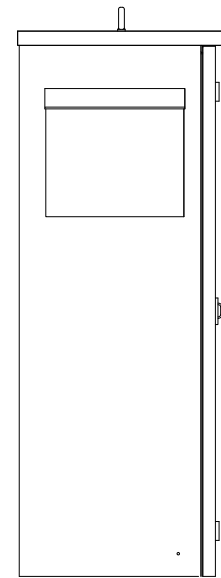
CUSTOMER IS RESPONSIBLE FOR INSTALLATION TO MEET ALL NATIONAL AND LOCAL ELECTRICAL CODES.

NOTE: USE ONLY HUBS OR FITTINGS THAT COMPLY WITH UL514B FOR TYPE 3R ENCLOSURES.

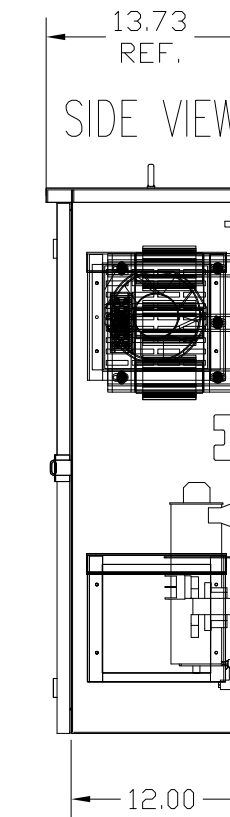
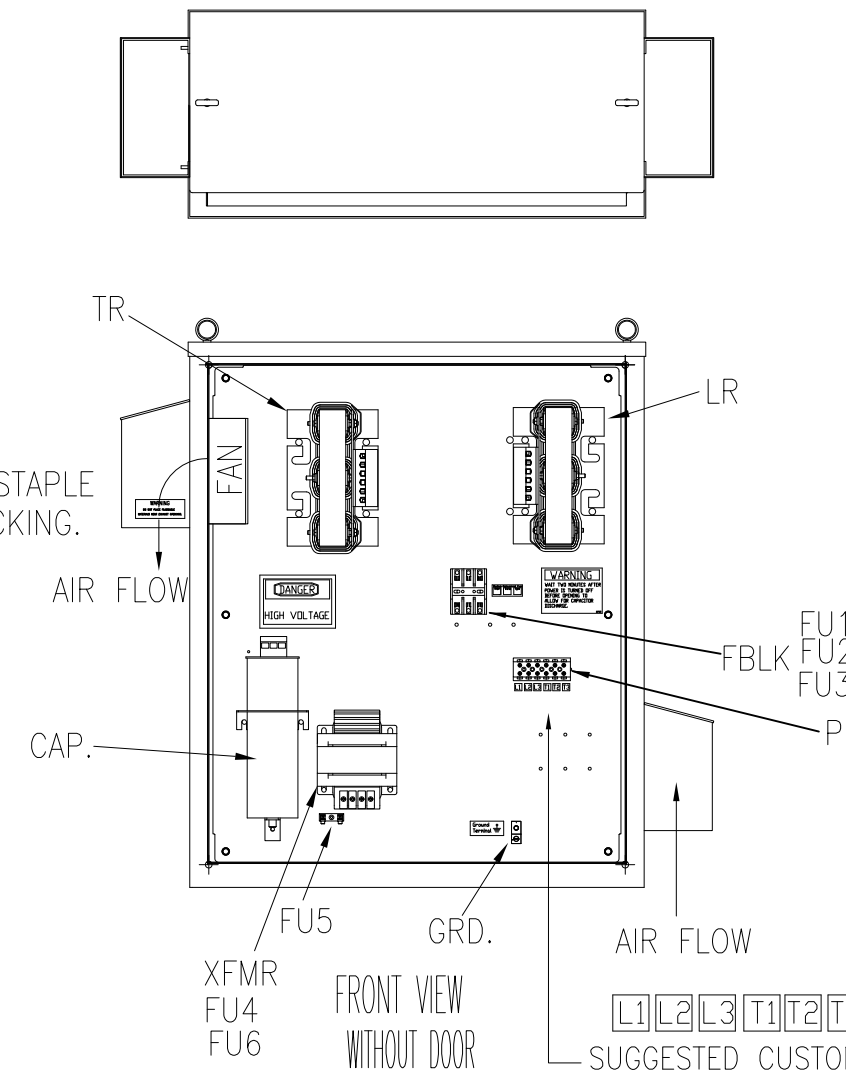
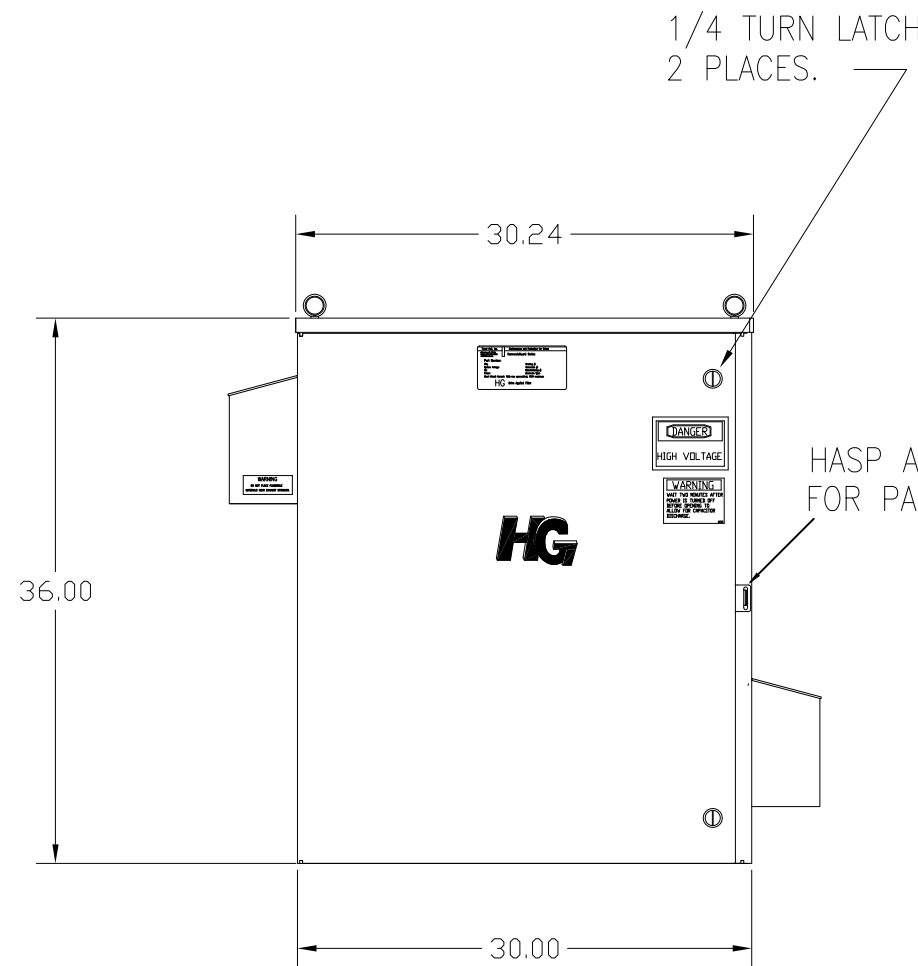
SEE DWG# 26756 FOR SCHEMATIC



INSIDE DOOR



SIDE VIEW



UNIT SPECIFICATIONS:					
KVAR	HARMONIC	VOLT	HZ	PHASE	HP
15	5TH	480	60	3	40
ENCLOSURE		UL TYPE 3R			
COLOR		WHITE			
APPROX.WT. LBS.		220			

SYMBOL	TCI PART NUMBER
LR	KDRI1T
TR	KTR15A65HG
CAP (15 KVAR)	27608
XFMR.	23896
Fu1, 2, 3	11307
Fu4,6	24009
Fu5	17567

ALTERNATE	TCI PART NUMBER
CAP (15 KVAR)	KCAP15A6B

PB—POWER INPUT BLOCK:
 1 AWG thru 4 AWG 35 IN—LBS. MAX.
 6 AWG thru 14 AWG 30 IN—LBS. MAX.
 16 AWG thru 20 AWG 25 IN—LBS. MAX.
 22 AWG 20 IN—LBS. MAX.

GROUND LUG:
 WIRE RANGE—1/0 TO #14 AWG.
 1/0 AWG thru 2 AWG 50 IN—LBS. MAX.
 4 AWG thru 6 AWG 45 IN—LBS. MAX.
 8 AWG 40 IN—LBS. MAX.
 10 AWG thru 14 AWG 35 IN—LBS. MAX.

TCI, LLC CLAIMS PROPRIETARY RIGHTS IN THE MATERIAL HEREIN DISCLOSED. IT IS SUPPLIED WITHOUT PREJUDICE TO ANY PATENT RIGHTS OF TCI AND MAY NOT BE REPRODUCED OR USED TO MANUFACTURE ANYTHING SHOWN THEREIN WITHOUT WRITTEN PERMISSION FROM TCI.					TOLERANCES (EXCEPT AS NOTED) DECIMAL	W132 N10611 Grant Drive Germantown, WI 53022
					.XX ±.12	
	C	2900 CHG TO ASC CAPS	3/4/13	DSW	.XXX±.03	HG40AW03ST, 40HP 480/3/60 UL TYPE 3R
	B	2731 UPDATE GRD LUG	3/4/11	DSW	FRACTIONAL ± 1/32	
	A	2641 ADD EYEBOLTS	10/13/09	DSW	ANGULAR ± 1/2°	DRN. BY DSW DATE 8/26/08 DWG. NO. 103616DG
NO	REVISION	DATE	BY		SCALE TO FIT SIZE C SHT.1 OF 1	