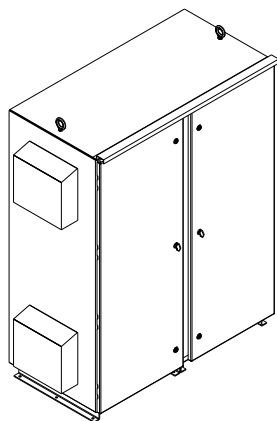


# HG400LW03STC

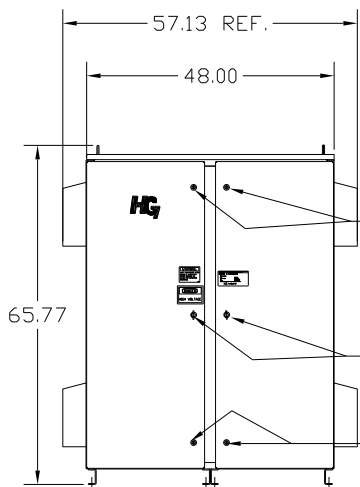
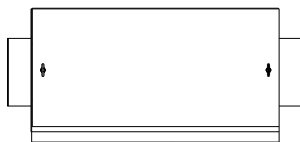
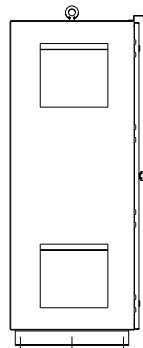
## UNIT SPECIFICATIONS:

KW	HARMONIC	VOLT	HZ	PHASE	FLA
400	5TH	400	50	3	710
ENCLOSURE		3R			
APPROX.WT. LBS.		1225			

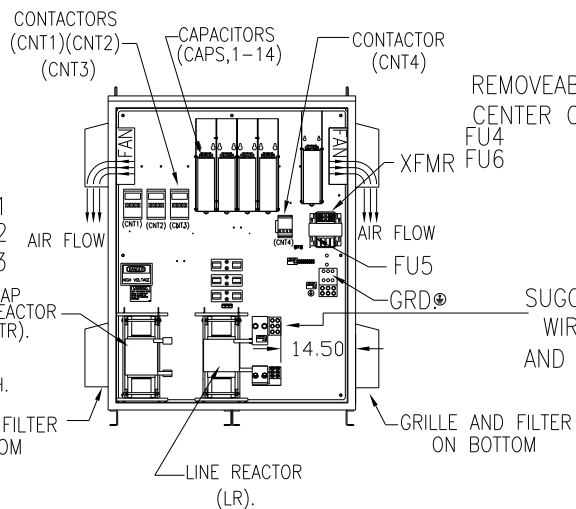
FOR SCHEMATIC SEE DWG# 27703-1



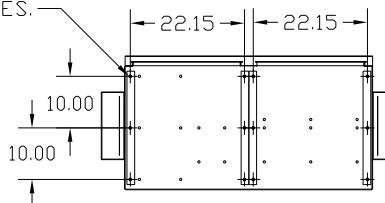
SIDE VIEW



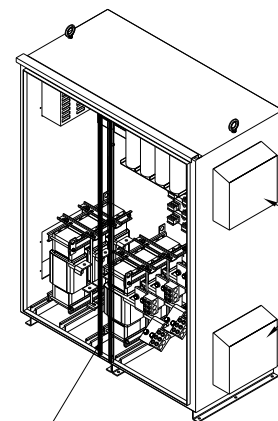
FRONT VIEW WITH DOORS.



50 DIA HOLES  
12 PLACES.

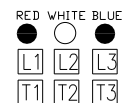


BOTTOM VIEW

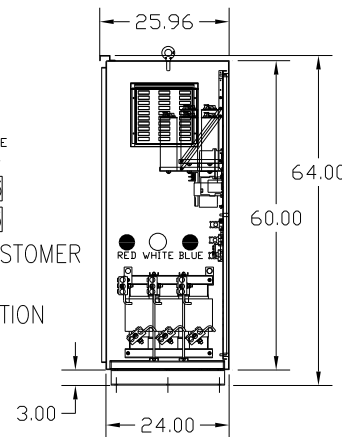


RAINHOOD  
4 PLACES.

REMOVEABLE  
CENTER CHANNEL  
FU4  
FU6



SUGGESTED CUSTOMER  
WIRE ENTRY  
AND EXIT LOCATION



SIDE VIEW

CUSTOMER IS RESPONSIBLE FOR INSTALLATION TO MEET ALL NATIONAL AND LOCAL ELECTRICAL CODES.

NOTE: USE ONLY HUBS OR FITTINGS THAT COMPLY WITH UL514B FOR TYPE 3R ENCLOSURES.

GROUND LUG:  
WIRE RANGE-THREE 600MCM-2  
TIGHTENING TORQUE 375 IN-LB.

CUSTOMER CONNECTIONS:  
WIRE RANGE-THREE 600MCM-2  
TIGHTENING TORQUE 375 IN-LB.

SYMBOL	TCI PART NUMBER
LR	KDRX36T
TR	KTR163L55HG
CAP1,-14 (20 KVAR)	KCAP20A6B
XFMR.	24389
Fu1, 2, 3	12596
Fu4,6	23820
Fu5	17569
CNT1, 2, 3	19246
CNT4	22980

TOLERANCES (EXCEPT AS NOTED):			
DECIMAL			
			.XX ± .03
			.XXX ± .01
FRACTIONAL			
			± 1/32
ANGULAR			
			± 1/2°
A	AS BUILT	4/20/2011	DSW
NO	REVISION	DATE	BY



7878 N. 86th STREET  
MILWAUKEE, WI 53224

TCI, HG7 Standard, 400kW  
400/3/50, Type 3R, CNT.

DRN BY	DSW	DATE	4/20/2011	DWG. NO.	104689DG
SCALE	TO FIT	APPRVD.			