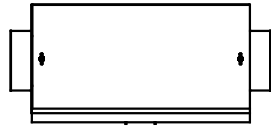
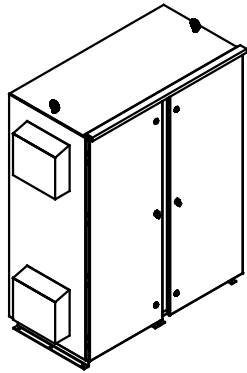


SEE DWG# 26964 FOR SCHEMATIC

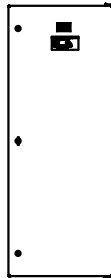
CUSTOMER IS RESPONSIBLE FOR INSTALLATION TO MEET ALL NATIONAL AND LOCAL ELECTRICAL CODES.

NOTE: USE ONLY HUBS OR FITTINGS THAT COMPLY WITH UL514B FOR TYPE 3R ENCLOSURES.

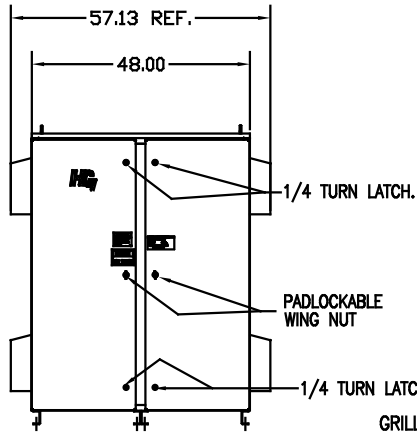
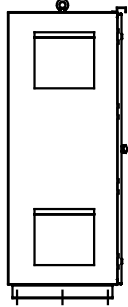
UNIT SPECIFICATIONS:					
KVAR	HARMONIC	VOLT	HZ	PHASE	HP
120	5TH	600	60	3	400
ENCLOSURE		TYPE 3R- COLOR, WHITE			
FEATURES		CONTACTOR, HEATER			
APPROX.WT. LBS		1010			



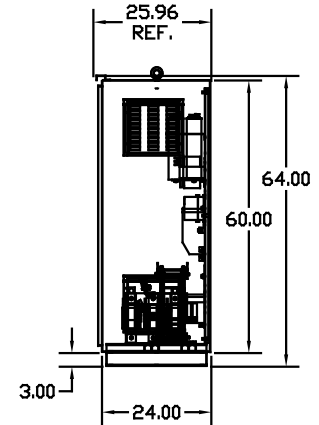
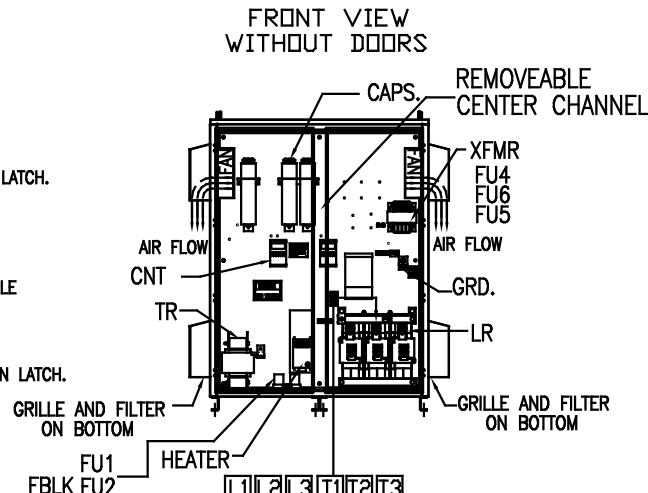
INSIDE DOOR



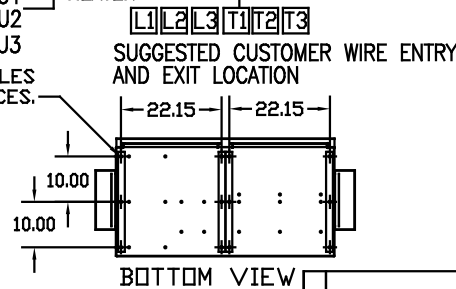
SIDE VIEW



FRONT VIEW WITH DOORS.



SIDE VIEW




BOTTOM VIEW

GROUND LUG:
WIRE RANGE-TWO 350MCM-4
TIGHTENING TORQUE 275 IN-LB.

CUSTOMER INPUT/OUTPUT CONNECTIONS:
WIRE RANGE-TWO 350MCM-4
TIGHTENING TORQUE 275 IN-LB.

SYMBOL	TCI PART NUMBER
LR	KDRX43T
TR	KTR120C65HG
(20 KVAR) 6 PLACES.	KCAP20C6B
XFMR.	24389
Fu1,2,3	11175
Fu4,6	24390
Fu5	23977
CNT	19246
HEATER (800W)	24301
XFMR (HS10F1BS)	25689
Fu7,8	25693

NO	REVISION	DATE	BY	TOLERANCES EXCEPT AS NOTED	 7878 N. 86th STREET MILWAUKEE, WI 53224 HG400CW03STCH, 400HP 600/3/60 UL TYPE 3R DATE BY DWV DATE 02/18/09 DRAWING NO. D 103757DG SCALE TO FIT
				.XX ±.12	
				.XXX ±.06	
				FRACTIONAL ± 1/32	
				DECIMAL ± 1/2"	