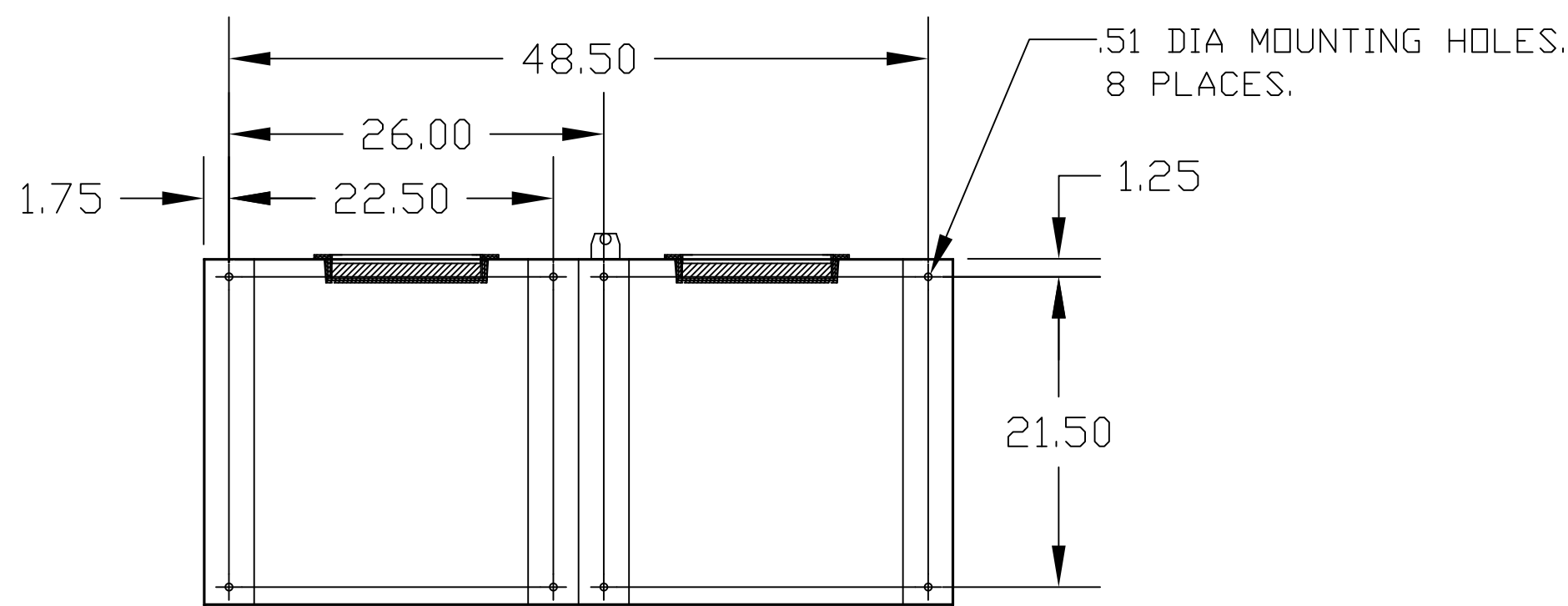
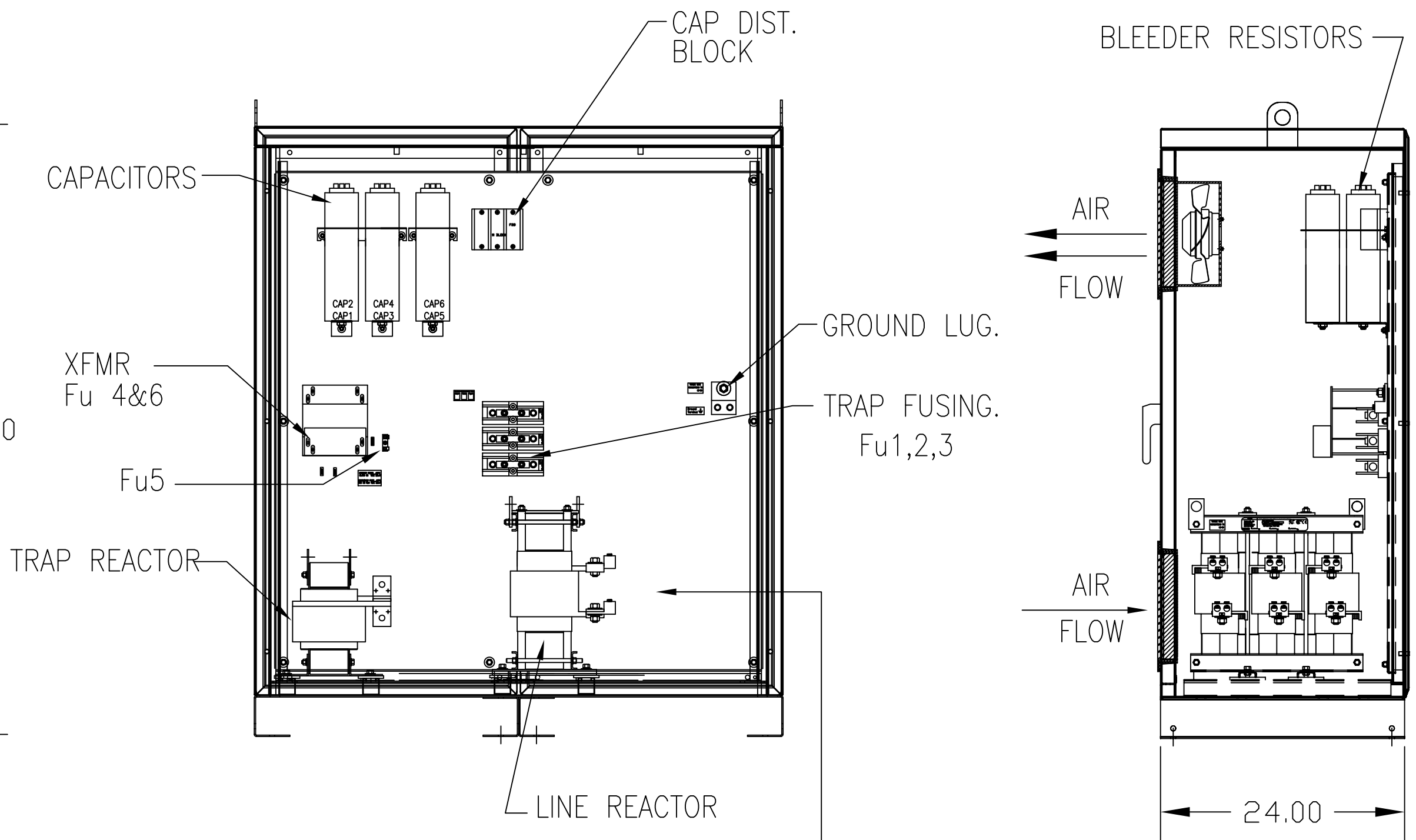
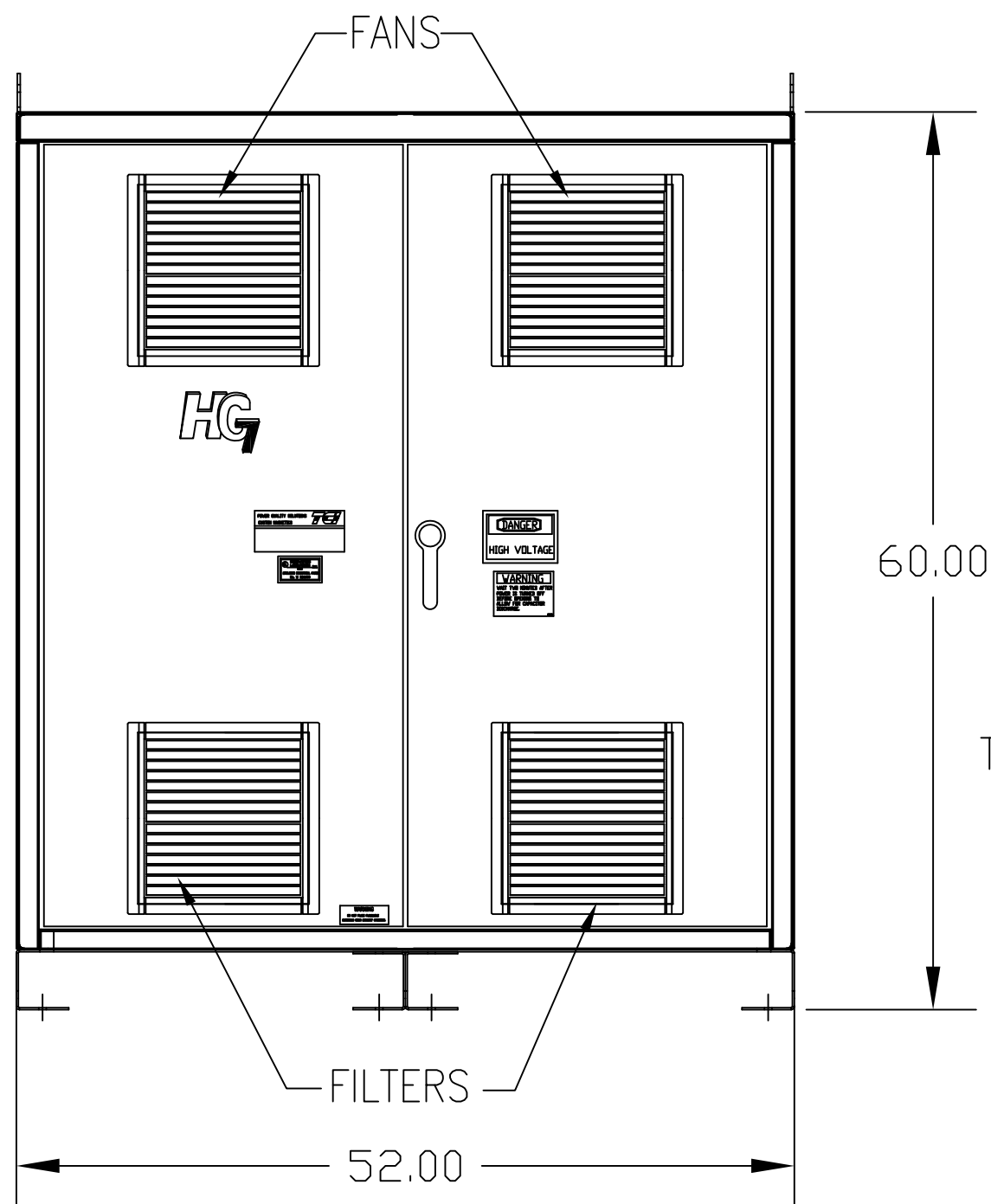


UNIT SPECIFICATIONS:						
KVAR	HARMONIC	VOLT	HZ	PHASE	HP	
120	5TH	600	60	3	400	
ENCLOSURE		NEMA 1				
APPROX.WT. LBS.		990				

SYMBOL	TCI PART NUMBER
LR	KDRX43T
TR	KTR120C65HG
CAP1 -6 (20 KVAR)	KCAP20C6B
XFMR.	25292
Fu1a;2a;3a	11175
Fu4,6	24390
Fu5	23977



CUSTOMER CONNECTIONS:
 L1 L2 L3
 T1 T2 T3

CUSTOMER CONNECTIONS:
 WIRE RANGE-TWO 350MCM-4
 TIGHTENING TORQUE 275 IN-LB.

GROUND LUG:
 WIRE RANGE-TWO 350MCM-4
 TIGHTENING TORQUE 275 IN-LB.

FOR SCHEMATIC SEE 25116
 CUSTOMER IS RESPONSIBLE FOR INSTALLATION TO MEET ALL NATIONAL AND LOCAL ELECTRICAL CODES

TCI, LLC CLAIMS PROPRIETARY RIGHTS IN THE MATERIAL HEREIN DISCLOSED. IT IS SUPPLIED WITHOUT PREJUDICE TO ANY PATENT RIGHTS OF TCI AND MAY NOT BE REPRODUCED OR USED TO MANUFACTURE ANYTHING SHOWN THEREIN WITHOUT WRITTEN PERMISSION FROM TCI.				TOLERANCES (EXCEPT AS NOTED): DECIMAL		W132 N10611 Grant Drive Germantown, WI 53022	
D	2882 ADD DIST BLOCK	11/30/12	DSW	.XX ±.03	HG400CW01ST, HG7 STANDARD 400 HP, 600/3/60, TYPE 1 DRN. BY DSW DATE 3/17/05 DWG. NO. 102695DG SCALE TO FIT SIZE C SHT.1 OF 1		
C	DWG NO WAS IN ERROR	1/27/12	RJC	.XXX±.01			
B	2786 REMOVE COLOR	11/14/11	DSW	FRACTIONAL ± 1/32			
A	2516, CAP WAS 18612	9/30/07	RJC	ANGULAR ± 1/2°			
NO	REVISION	DATE	BY				