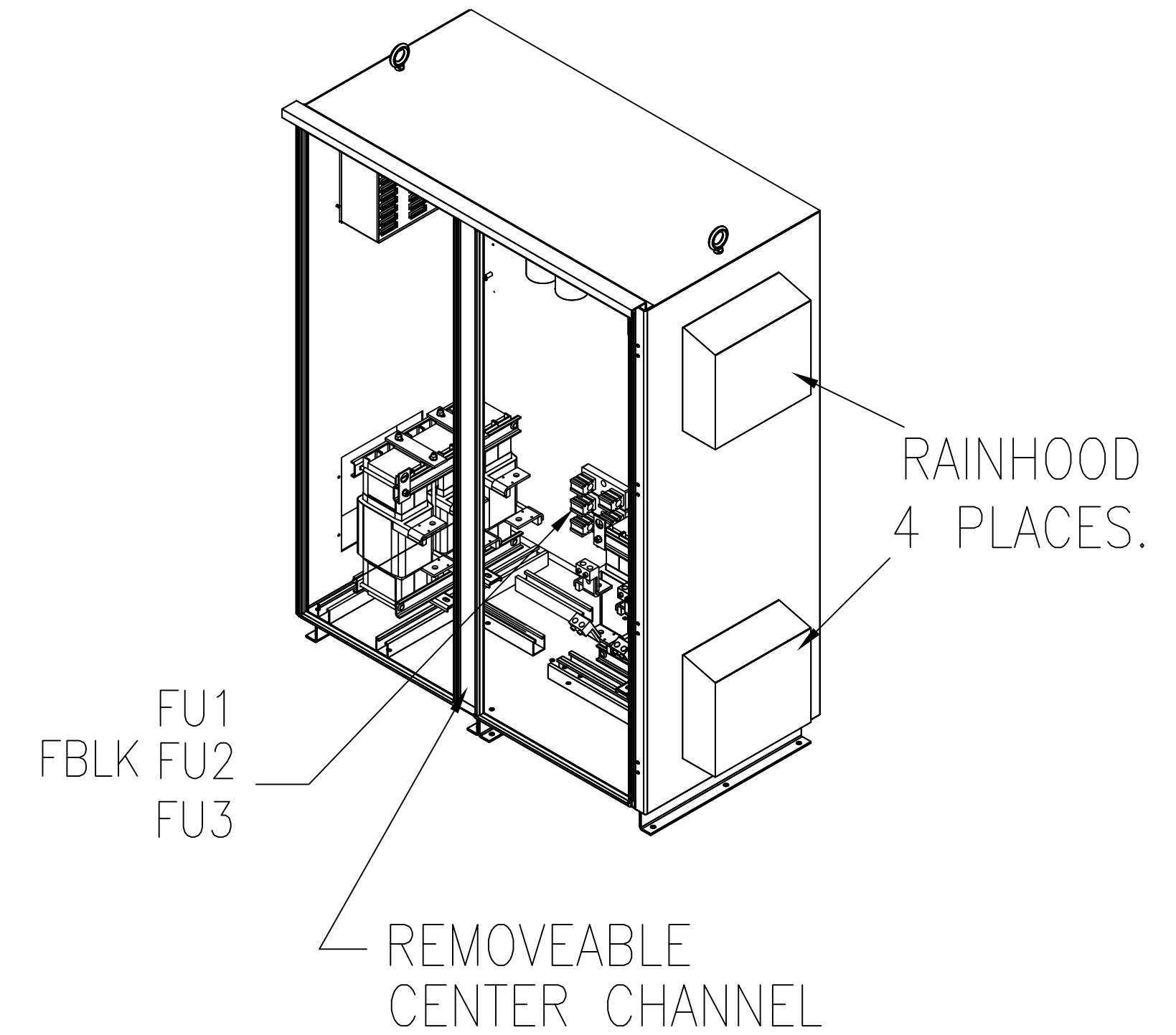
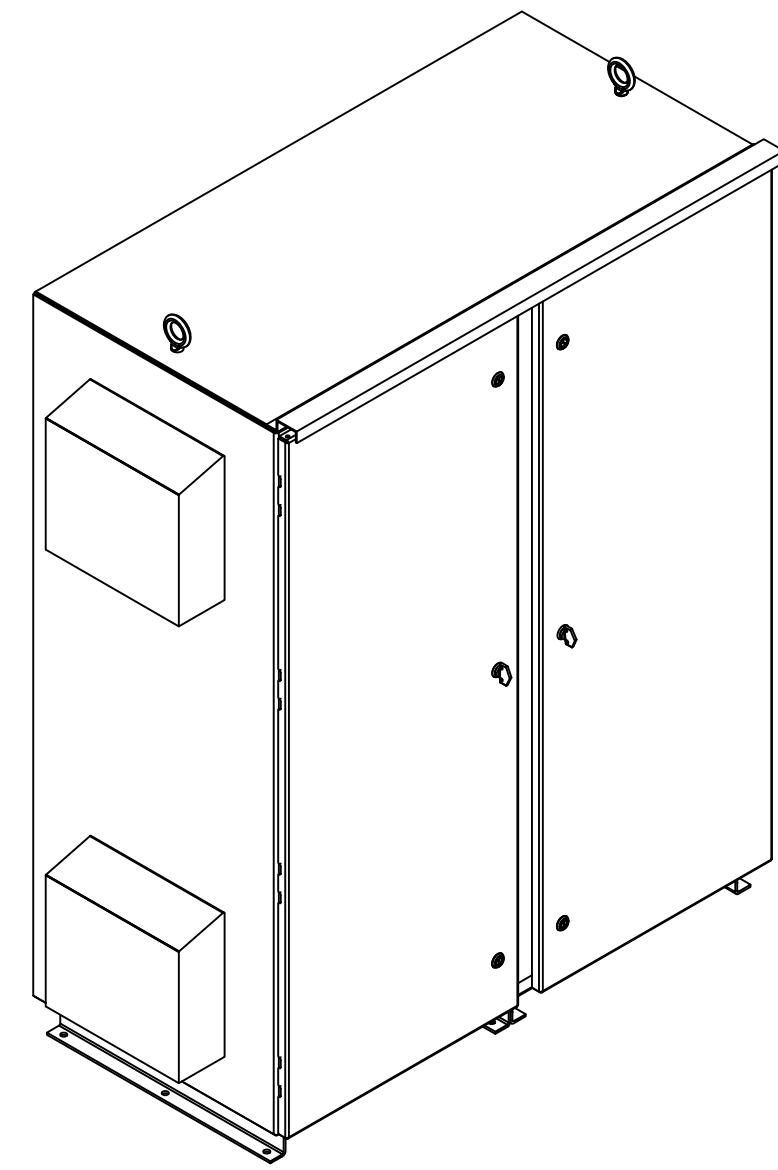


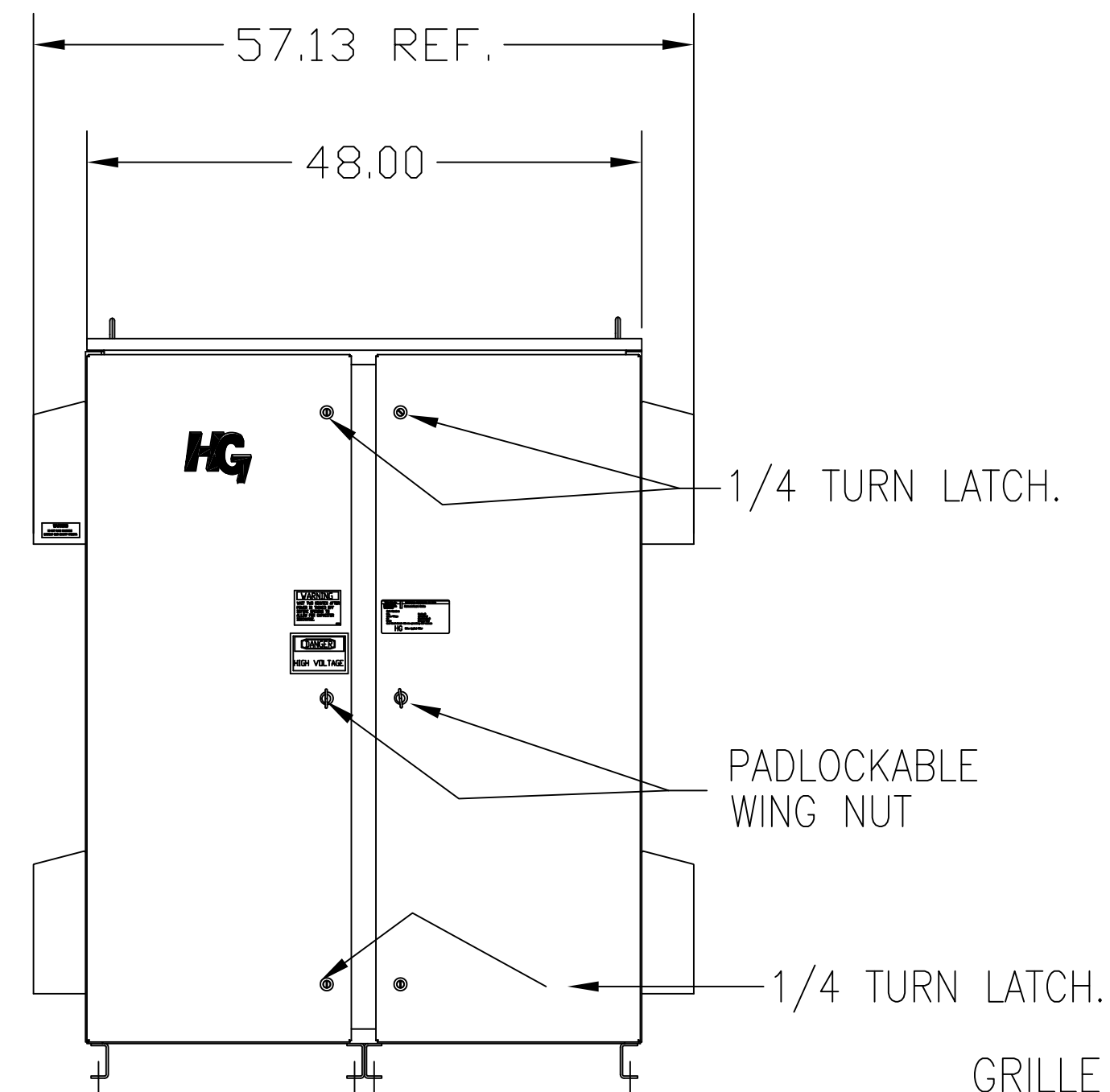
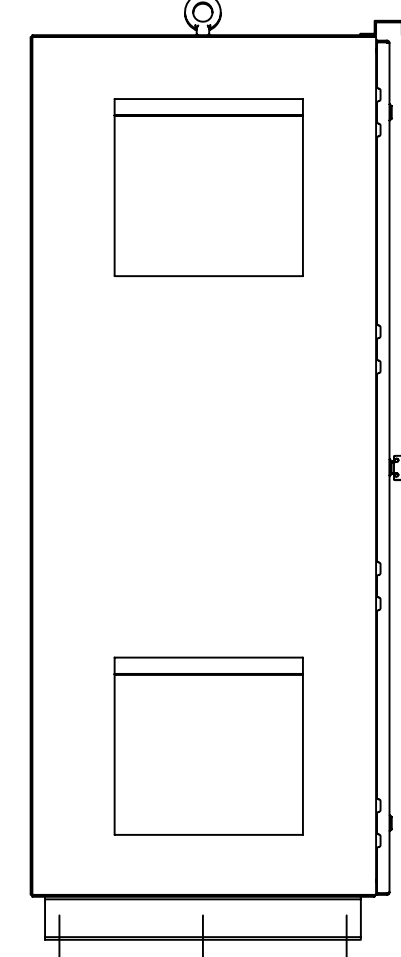
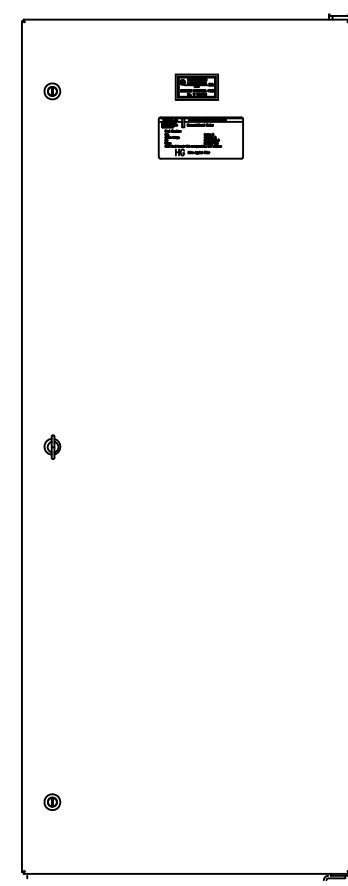
CUSTOMER IS RESPONSIBLE FOR INSTALLATION TO MEET ALL NATIONAL AND LOCAL ELECTRICAL CODES.

NOTE: USE ONLY HUBS OR FITTINGS THAT COMPLY WITH UL514B FOR TYPE 3R ENCLOSURES.

SEE DWG# 26757 FOR SCHEMATIC

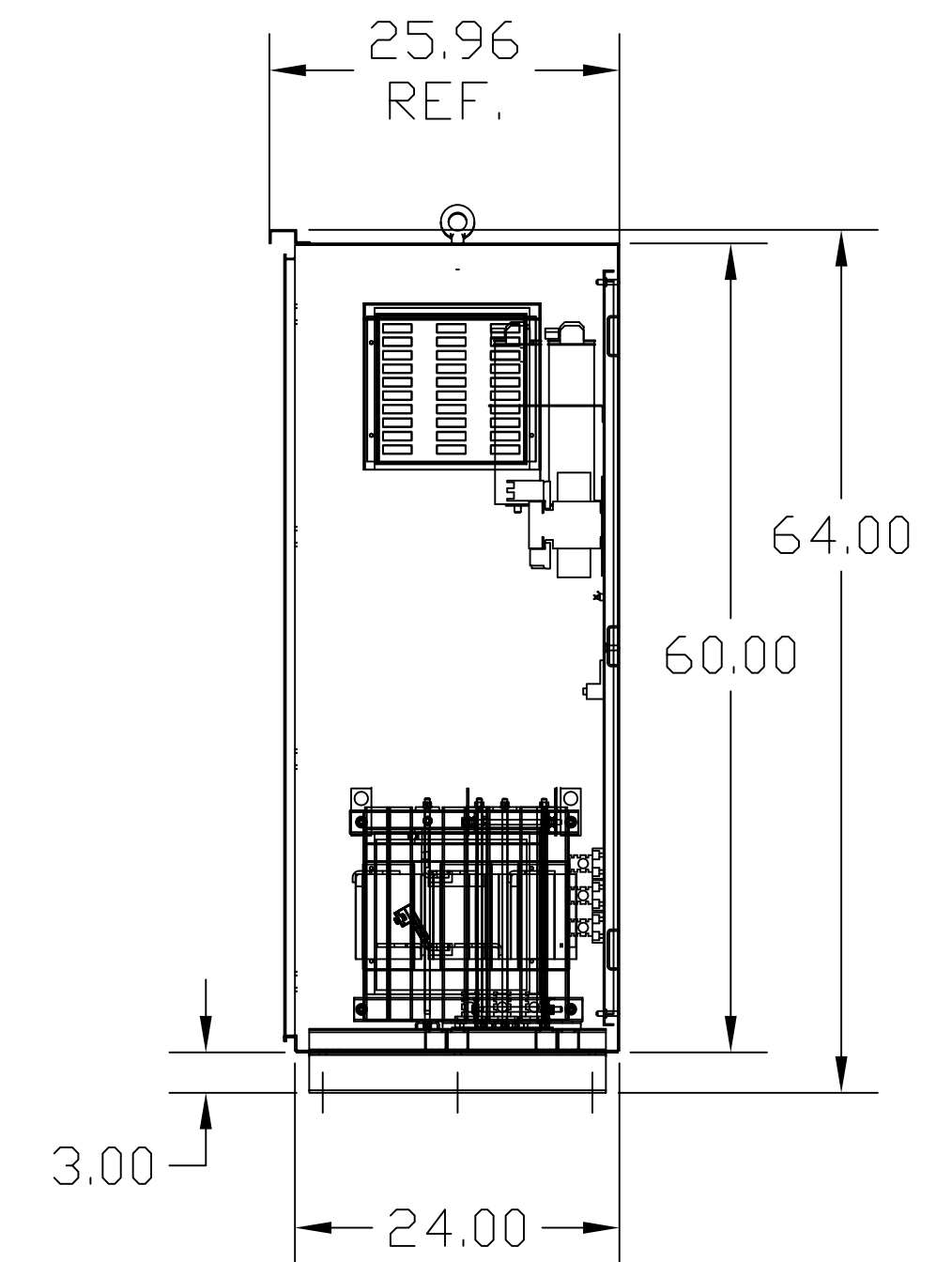
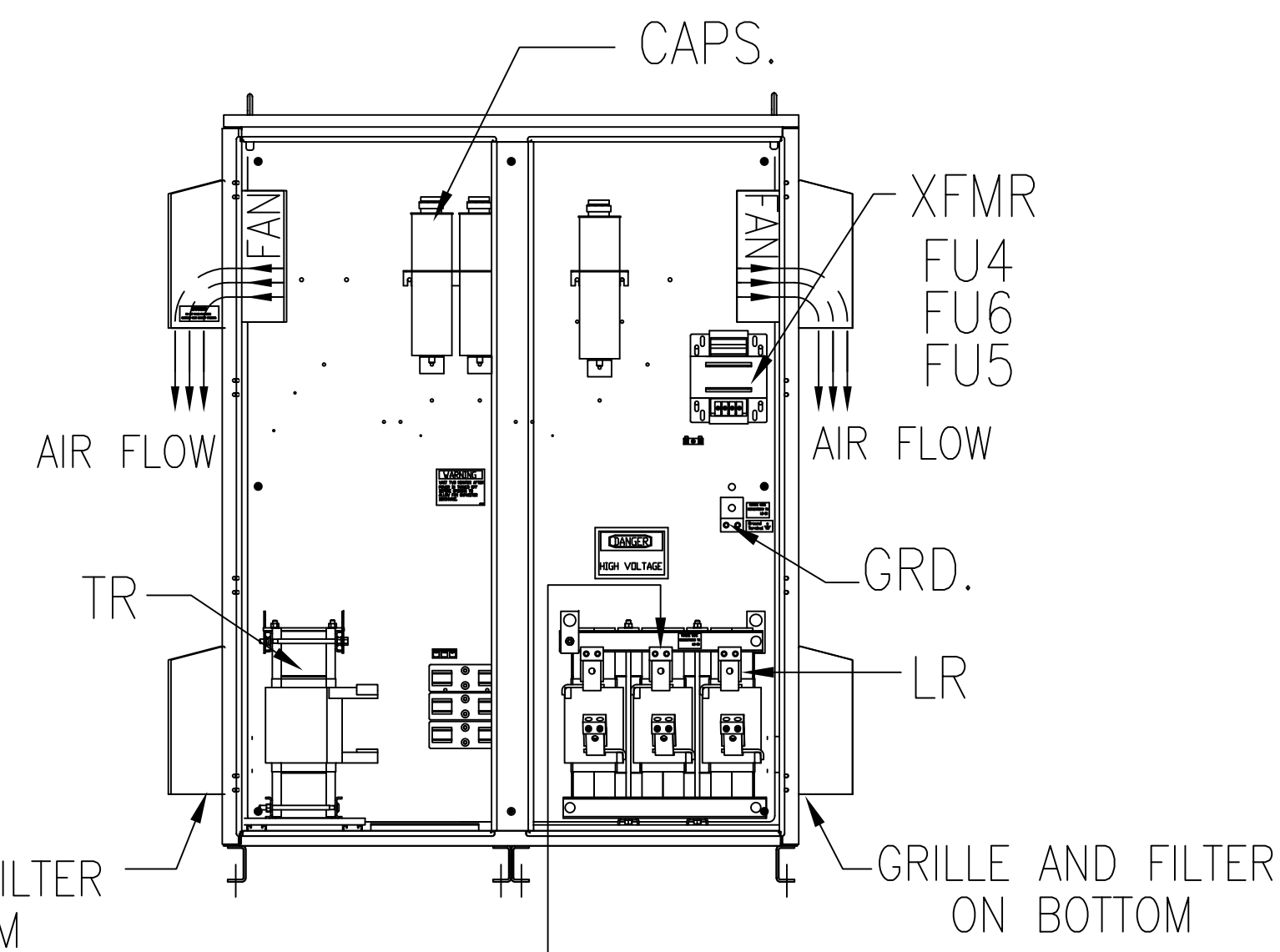


INSIDE DOOR SIDE VIEW



FRONT VIEW WITH DOORS.

FRONT VIEW WITHOUT DOORS



SIDE VIEW

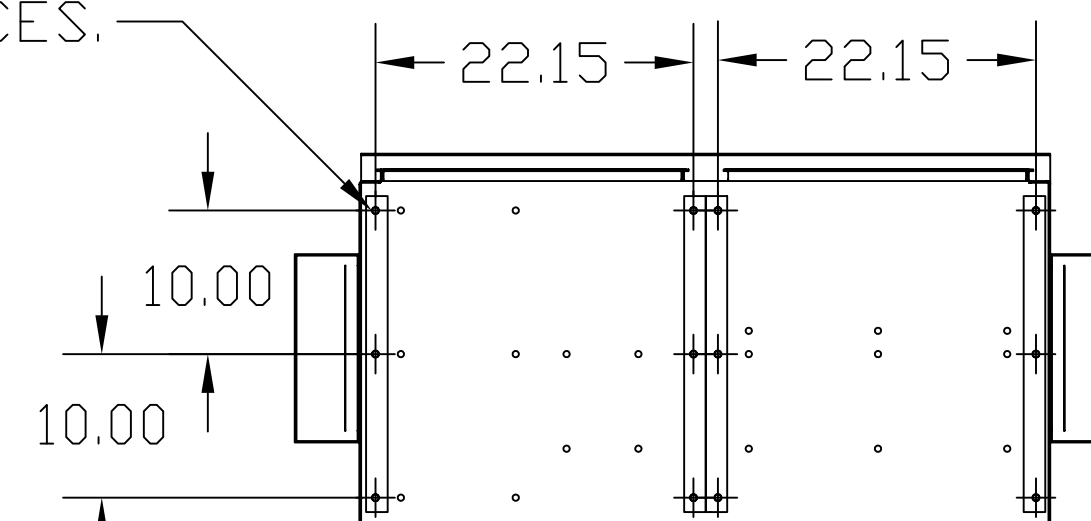
SYMBOL	TCI PART NUMBER
LR	KDRX3T
TR	KTR120A65HG
CAP.1,2,3,4,5,6 (20 KVAR)	27609
XFMR.	24113
Fu1;2;3	12462
Fu4,6	14106
Fu5	24110

ALTERNATE	TCI PART NUMBER
CAP.1,2,3,4,5,6 (20 KVAR)	KCAP20A6B

UNIT SPECIFICATIONS:						
KVAR	HARMONIC	VOLT	HZ	PHASE	HP	
120	5TH	480	60	3	400	
ENCLOSURE	TYPE 3R- COLOR, WHITE					
APPROX.WT. LBS	895					

.50 DIA HOLES 12 PLACES.

SUGGESTED CUSTOMER WIRE ENTRY AND EXIT LOCATION



BOTTOM VIEW

CUSTOMER INPUT/OUTPUT CONNECTION  
WIRE RANGE-TWO 350MCM-4  
TIGHTENING TORQUE 275 IN-LB.

<small>TCI, LLC CLAIMS PROPRIETARY RIGHTS IN THE MATERIAL HEREIN DISCLOSED. IT IS SUPPLIED WITHOUT PREJUDICE TO ANY PATENT RIGHTS OF TCI AND MAY NOT BE REPRODUCED OR USED TO MANUFACTURE ANYTHING SHOWN THEREIN WITHOUT WRITTEN PERMISSION FROM TCI.</small>	<small>TOLERANCES (EXCEPT AS NOTED)</small> DECIMAL .XX ±.12 .XXX±.06 FRACTIONAL ± 1/32 ANGULAR ± 1/2°			<small>© v132 N10611 Grant Drive Germantown, WI 53022</small> HG400AW03ST, 400HP 480/3/08 UL TYPE 3R	
	2900 CHG TO ASC CAPS NO REVISION	3/6/13 DATE		DSW BY	DSW SCALE TO FIT