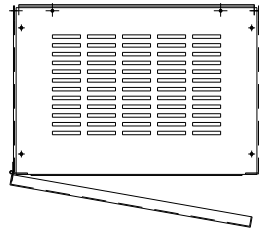
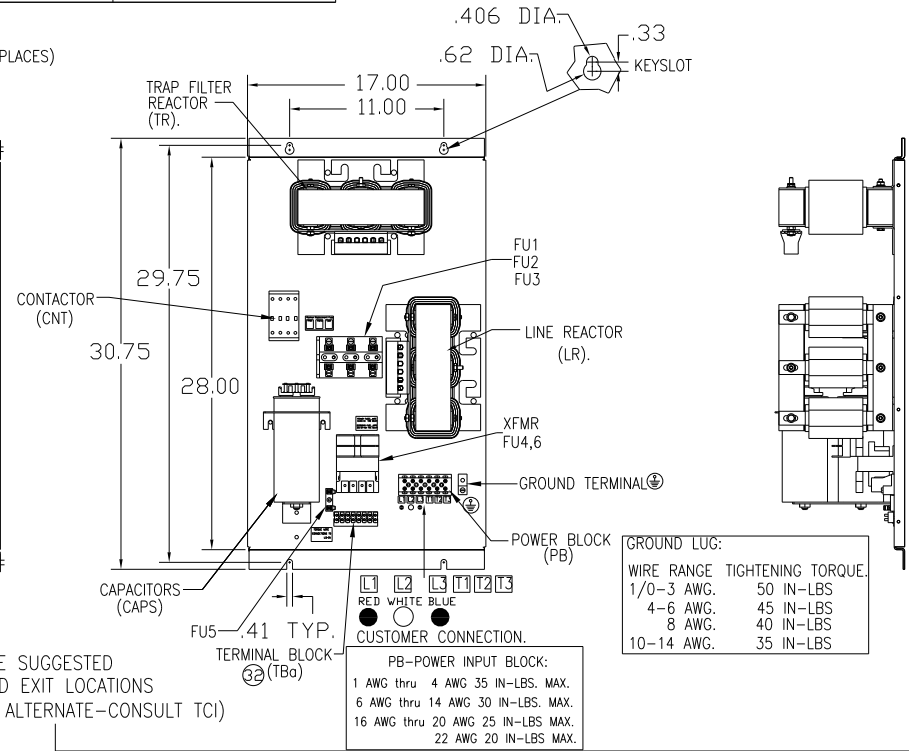
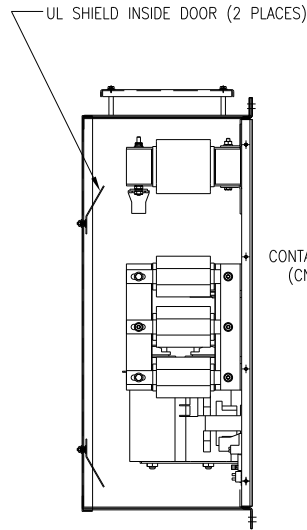
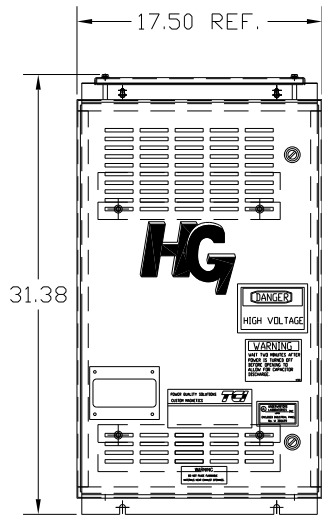
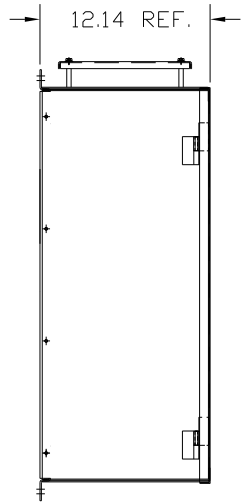


UNIT SPECIFICATIONS:					
KW	HARMONIC	VOLT	HZ	PHASE	FLA
37	5TH	400	50	3	75
ENCLOSURE		NEMA 1			
APPROX.WT. LBS.		185			

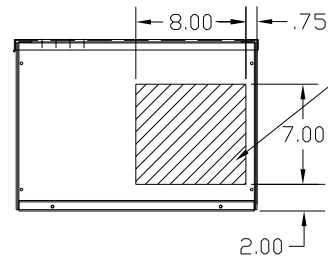


SYMBOL	TCI PART NUMBER
LR	KDRG32T
TR	KTR15L55HG
CAP1. (10 KVAR)	KCAP10A6B
CAP2. (15 KVAR)	KCAP15A6B
XFMR.	24385
Fu1, 2, 3	22925
Fu4,6	13180
Fu5	24011
CNT	23021



GROUND LUG:	
WIRE RANGE	TIGHTENING TORQUE.
1/0-3 AWG.	50 IN-LBS
4-6 AWG.	45 IN-LBS
8 AWG.	40 IN-LBS
10-14 AWG.	35 IN-LBS

PB-POWER INPUT BLOCK:	
1 AWG thru 4 AWG	35 IN-LBS. MAX.
6 AWG thru 14 AWG	30 IN-LBS. MAX.
16 AWG thru 20 AWG	25 IN-LBS. MAX.
22 AWG thru 24 AWG	20 IN-LBS. MAX.



HATCHED AREAS ARE SUGGESTED CUSTOMER WIRE AND EXIT LOCATIONS (BOTTOM ENTRANCE ALTERNATE-CONSULT TCI)

ENCLOSURE NOT SHOWN

CUSTOMER IS RESPONSIBLE FOR INSTALLATION TO MEET ALL NATIONAL AND LOCAL ELECTRICAL CODES.

				TOLERANCES (EXCEPT AS NOTED)		TCI 7878 N. 86th STREET MILWAUKEE, WI 53224	
				DECIMAL	.XX ±.03	HG37LW01STC, 37KW 400/3 ENCLOSED, W/CNT	
				FRACTIONAL	.XXX ±.01		
				ANGULAR	± 1/32		
A	AS BUILT	11/04/10	DSW	SCALE	TO FIT	DATE	11/11/2010
NO	REVISION	DATE	BY	SCALE	TO FIT	APPROV	104532DG

SEE DRAWING# 27703 FOR SCHEMATIC