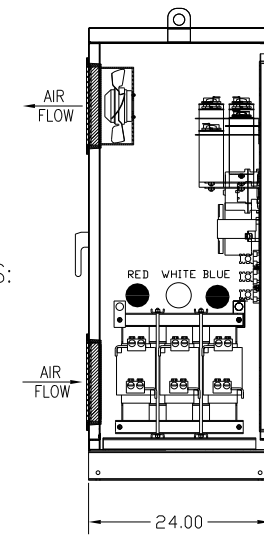
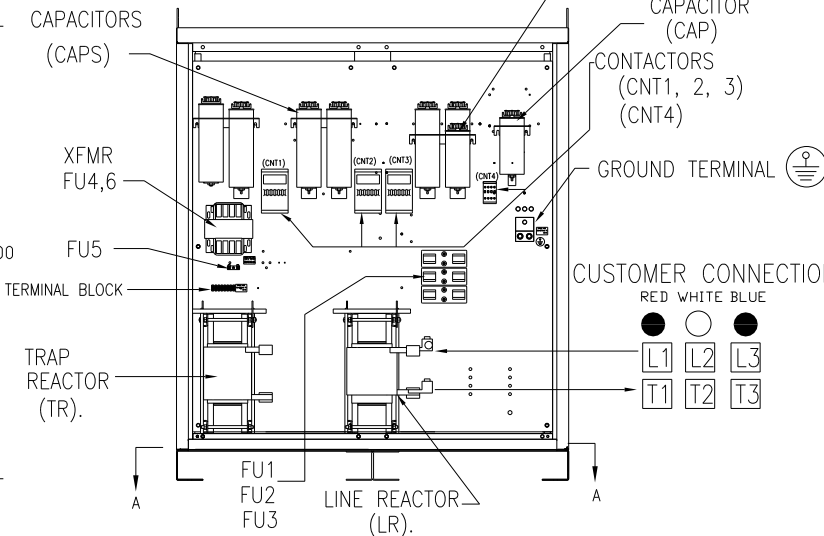
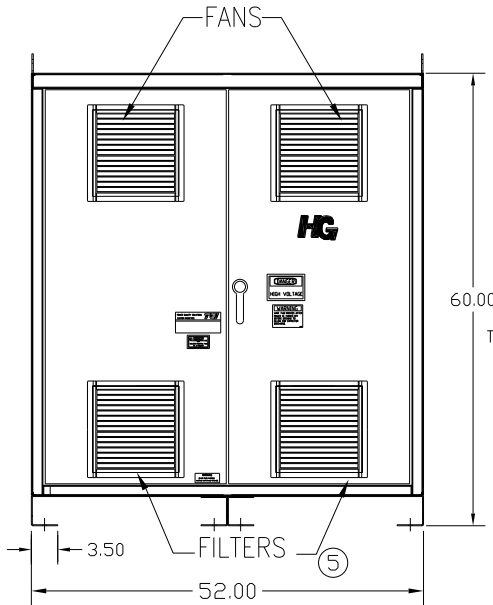
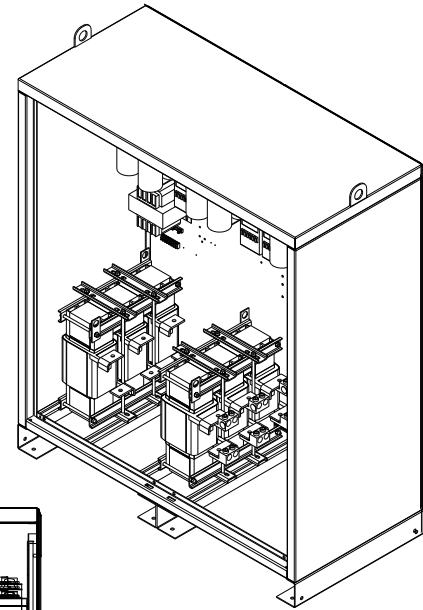
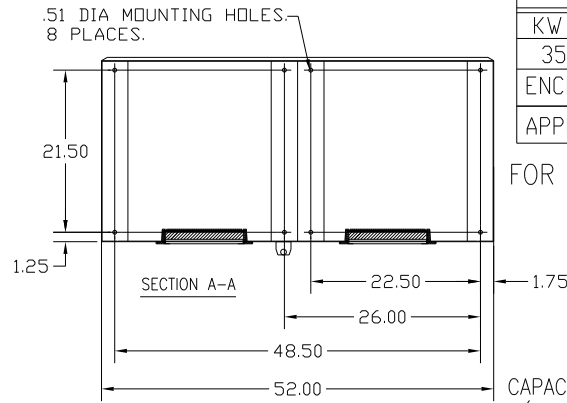
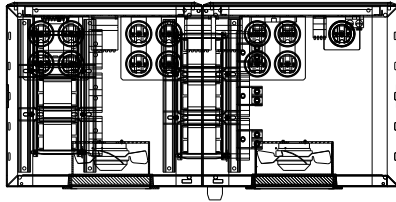


# HG355LW01STC

UNIT SPECIFICATIONS:						
KW	HARMONIC	VOLT	HZ	PHASE	FLA	
355	5TH	400	50	3	640	
ENCLOSURE		NEMA 1				
APPROX.WT. LBS.		1125				

FOR SCHEMATIC SEE DWG# 27703-1



CUSTOMER CONNECTIONS:  
WIRE RANGE-TWO 600MCM-2  
TIGHTENING TORQUE 500 IN-LB.

GROUND LUG:  
WIRE RANGE-TWO 600MCM-2  
TIGHTENING TORQUE 500 IN-LB.

CUSTOMER IS RESPONSIBLE FOR INSTALLATION TO MEET ALL NATIONAL AND LOCAL ELECTRICAL CODES.

SYMBOL	TCI PART NUMBER
LR	KDRX35T
TR	KTR142L55HG
CAP1,-11 (20 KVAR)	KCAP20A6B
CAP12 (15 KVAR)	KCAP15A6B
CAP13 (10 KVAR)	KCAP10A6B
XFMR.	24389
Fu1, 2, 3	13331
Fu4,6	23820
Fu5	17569
CNT1, 2, 3	19246
CNT4	24397

NO	REVISION	DATE	BY
A	AS BUILT	3/25/2011	DSW

TOLERANCES (EXCEPT AS NOTED)		<b>TCI</b> 7878 N. 86th STREET MILWAUKEE, WI 53224			
DECIMAL	.XX ± .03 .XXX ± .01				
FRACTIONAL	± 1/32	TCI, HG7 Standard, 355kW 400/3/50, Type1, CNT.			
ANGULAR	± 1/2°				
DRN BY	DSW	DATE	3/25/2011	DWG. NO.	104673DG
SCALE	--	APPRV'D		B	SHT. 1 OF 1