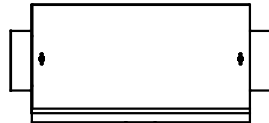
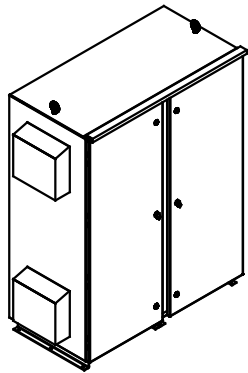


SEE DWG# 26964 FOR SCHEMATIC

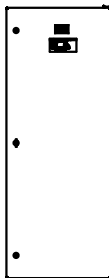
CUSTOMER IS RESPONSIBLE FOR INSTALLATION TO MEET ALL NATIONAL AND LOCAL ELECTRICAL CODES.

NOTE: USE ONLY HUBS OR FITTINGS THAT COMPLY WITH UL514B FOR TYPE 3R ENCLOSURES.

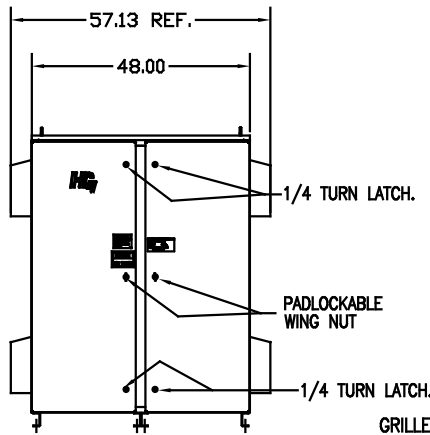
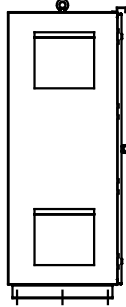
UNIT SPECIFICATIONS:					
KVAR	HARMONIC	VOLT	HZ	PHASE	HP
105	5TH	600	60	3	350
ENCLOSURE		TYPE 3R- COLOR, WHITE			
FEATURES		CONTACTOR, HEATER			
APPROX.WT. LBS		1000			



INSIDE DOOR

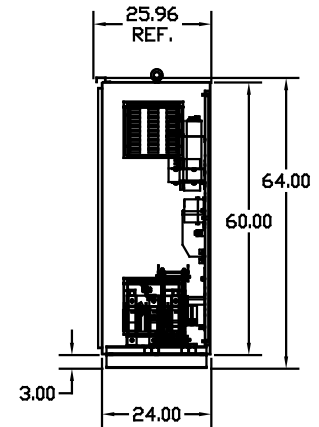
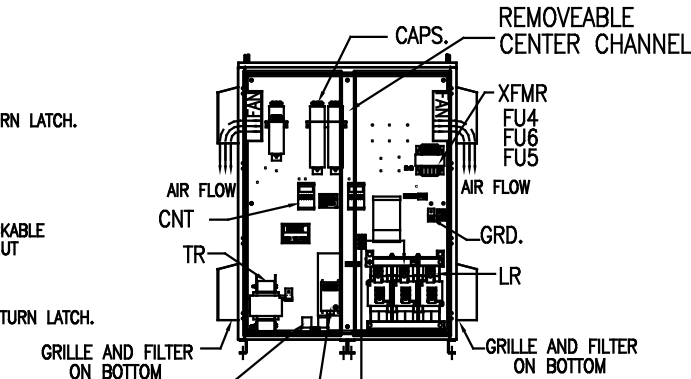


SIDE VIEW

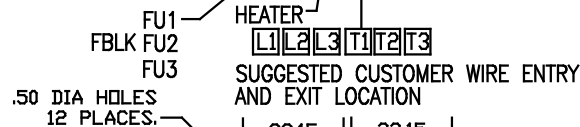


FRONT VIEW WITH DOORS.

FRONT VIEW WITHOUT DOORS



SIDE VIEW



BOTTOM VIEW

GROUND LUG:
WIRE RANGE—ONE 600MCM-4
TWO 250MCM-1/0
TIGHTENING TORQUE 500 IN-LB.

CUSTOMER INPUT/OUTPUT CONNECTIONS:
WIRE RANGE—TWO 350MCM-4
TIGHTENING TORQUE 275 IN-LB.

SYMBOL	TCI PART NUMBER
LR	KDRX42T
TR	KTR105C65HG
(15 KVAR) 1 PLACE.	KCAP15C6B
(20 KVAR) 4 PLACES.	KCAP20C6B
(10 KVAR) 1 PLACE.	KCAP10C6B
XFMR.	24389
Fu1,2,3	13333
Fu4,6	13697
Fu5	16987
CNT	23368
HEATER (800W)	24301
XFMR (HS10F1BS)	25689
Fu7,8	25693

NO.	REVISION	DATE	BY	TOLERANCES EXCEPT AS NOTED	SCALE	DATE	SCALE	DATE	SCALE
				.XX ±.12	TO FIT	02/18/09			
				.XXX ±.06					
				FRACTIONAL ± 1/32					
				DECIMAL ± 1/2"					

TCI 7878 N. 86th STREET MILWAUKEE, WI 53224

HG350CW03STCH, 350HP
600/3/60 UL TYPE 3R

DATE BY DSW DATE 02/18/09 DATE 103756DG
SCALE TO FIT SCALE 1/2"=1'-0" SHT. 1 OF 1