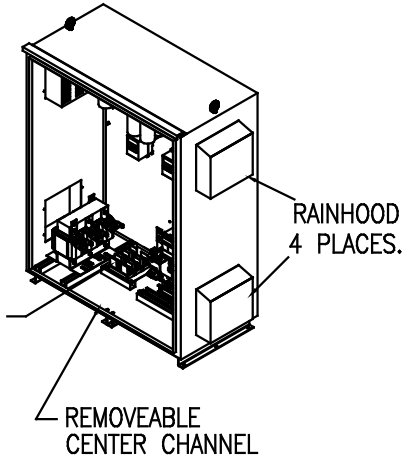


SEE DWG# 26964-1 FOR SCHEMATIC

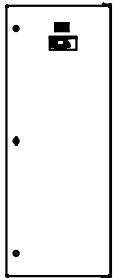
CUSTOMER IS RESPONSIBLE FOR INSTALLATION TO MEET ALL NATIONAL AND LOCAL ELECTRICAL CODES.

NOTE: USE ONLY HUBS OR FITTINGS THAT COMPLY WITH UL514B FOR TYPE 3R ENCLOSURES.

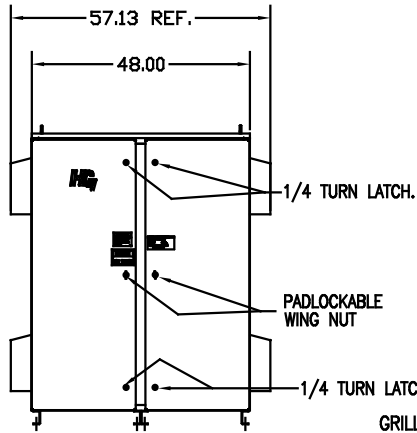
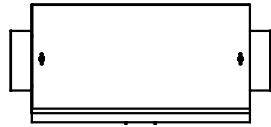
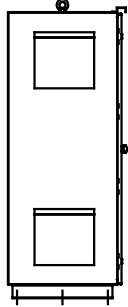
UNIT SPECIFICATIONS:					
KVAR	HARMONIC	VOLT	HZ	PHASE	HP
105	5TH	600	60	3	350
ENCLOSURE		TYPE 3R- COLOR, WHITE			
FEATURES		CONTACTOR			
APPROX.WT. LBS		966			



INSIDE  
DOOR

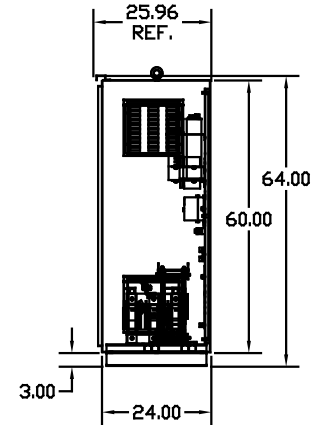
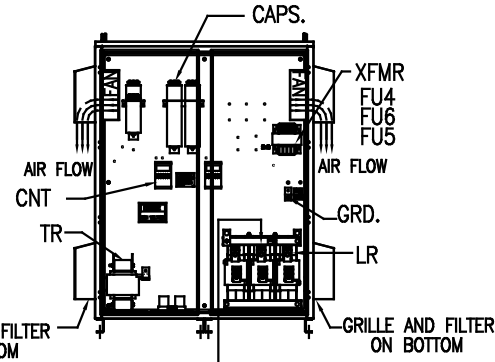


SIDE VIEW



FRONT VIEW  
WITH DOORS.

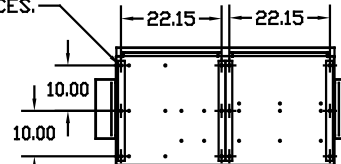
FRONT VIEW  
WITHOUT DOORS



SIDE VIEW

L1 L2 L3 T1 T2 T3  
SUGGESTED CUSTOMER WIRE ENTRY  
AND EXIT LOCATION

.50 DIA HOLES  
12 PLACES.



BOTTOM VIEW

GROUND LUG:

WIRE RANGE—ONE 600MCM-4  
TWO 250MCM-1/0  
TIGHTENING TORQUE 500 IN-LB.

CUSTOMER INPUT/OUTPUT  
CONNECTIONS:  
WIRE RANGE—TWO 350MCM-4  
TIGHTENING TORQUE 275 IN-LB.

SYMBOL	TCI PART NUMBER
LR	KDRX42T
TR	KTR105C65HG
(15 KVAR) 1 PLACE.	KCAP15C6B
(20 KVAR) 4 PLACES.	KCAP20C6B
(10 KVAR) 1 PLACE.	KCAP10C6B
XFMR.	24389
Fu1,2,3	13333
Fu4,6	13697
Fu5	16987
CNT	23368

TOLERANCES  
EXCEPT AS NOTED:  
.XX ±.12  
.XXX±.06  
FRACTIONAL  
± 1/32  
DECIMAL  
± 1/2"

**TCI** 7878 N. 86th STREET  
MILWAUKEE, WI 53224

HG350CW03STC, 350HP  
600/3/60 UL TYPE 3R

DATE BY DSW DATE 02/18/09 FILE NO. D 103701DG  
SCALE TO FIT

NO.	REVISION	DATE	BY