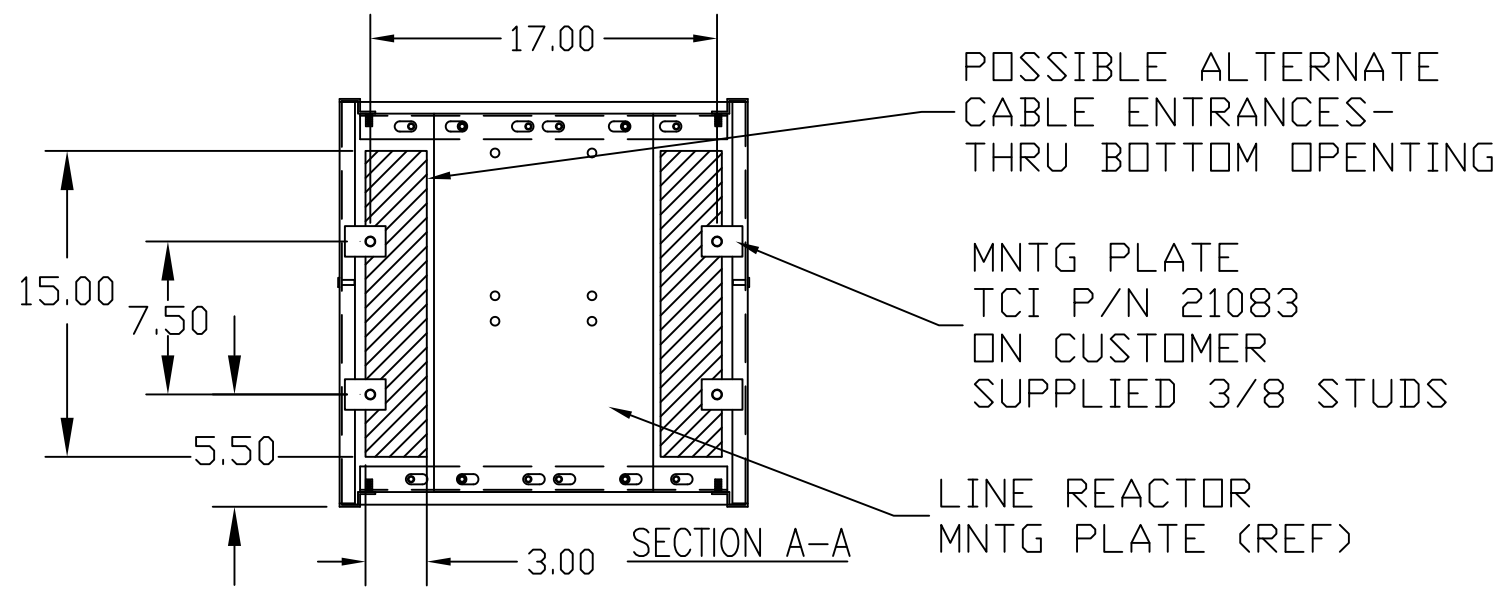
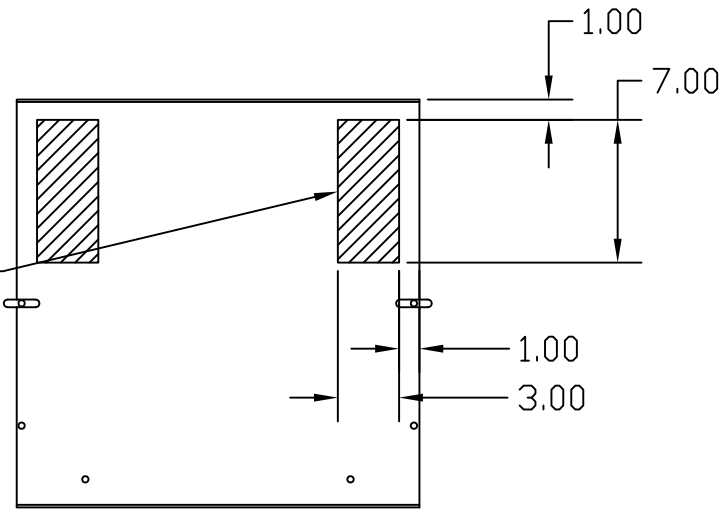
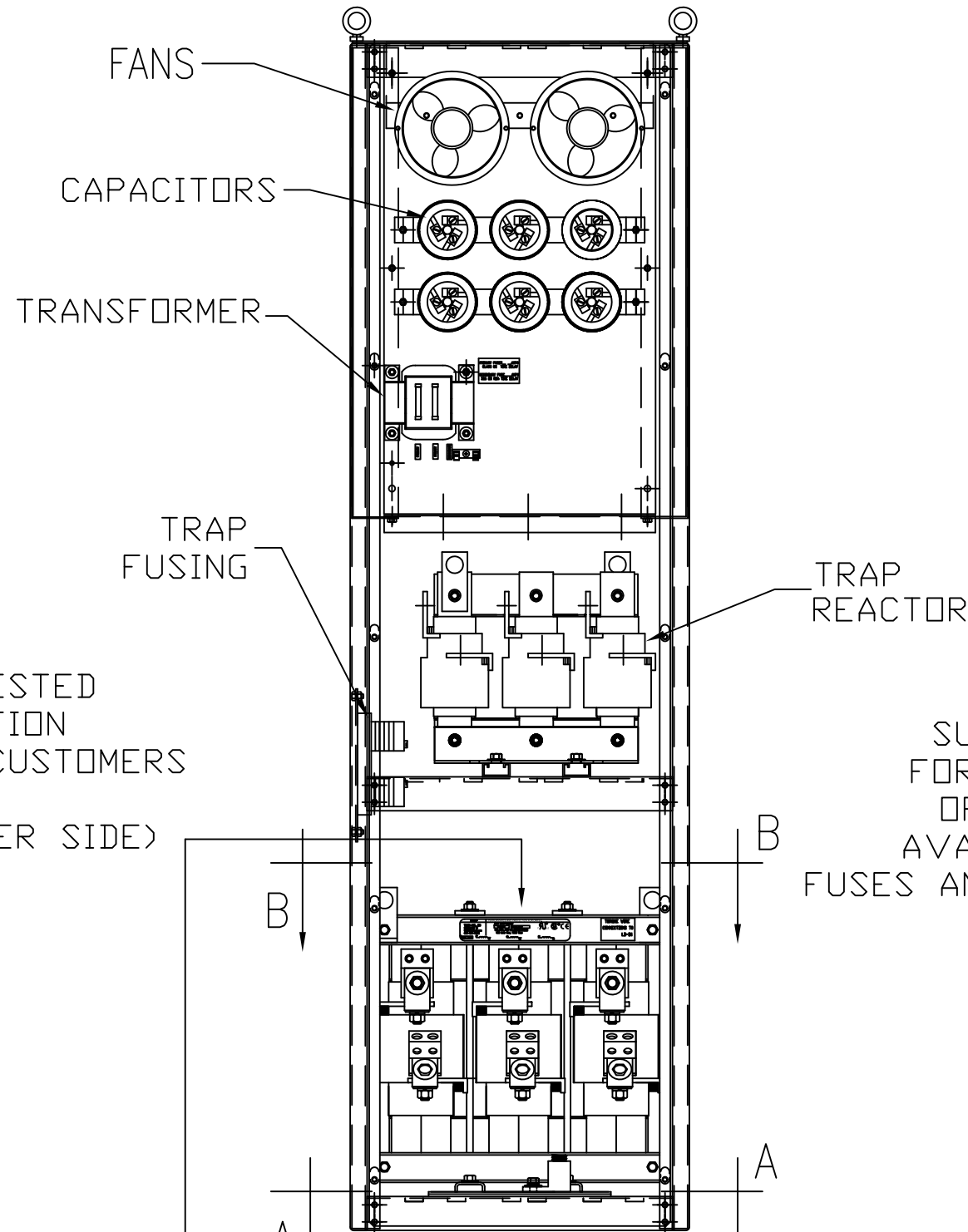
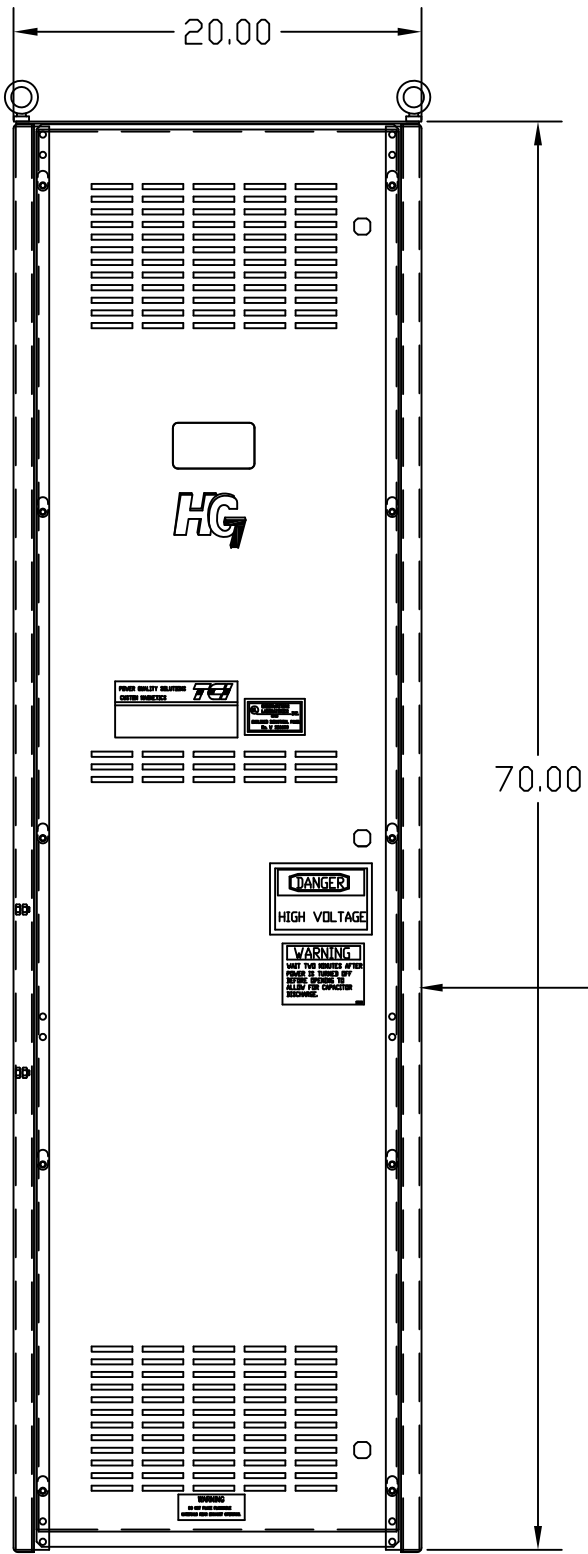
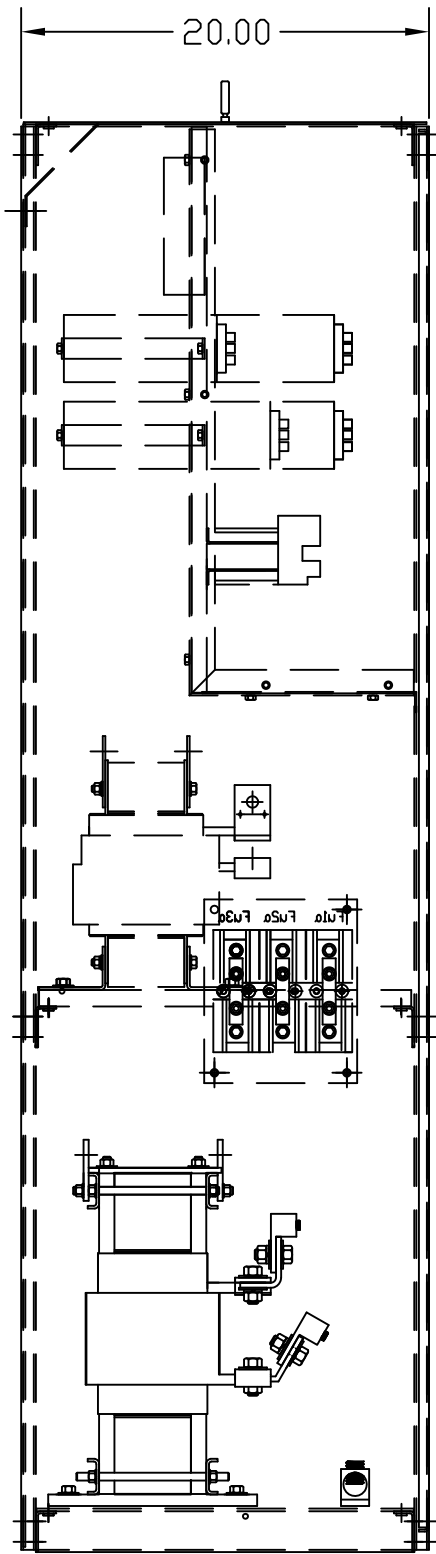


POSSIBLE ALTERNATE CABLE ENTRANCES- REQUIRES MODIFICATION OF AIR FLOW DEFLECTOR

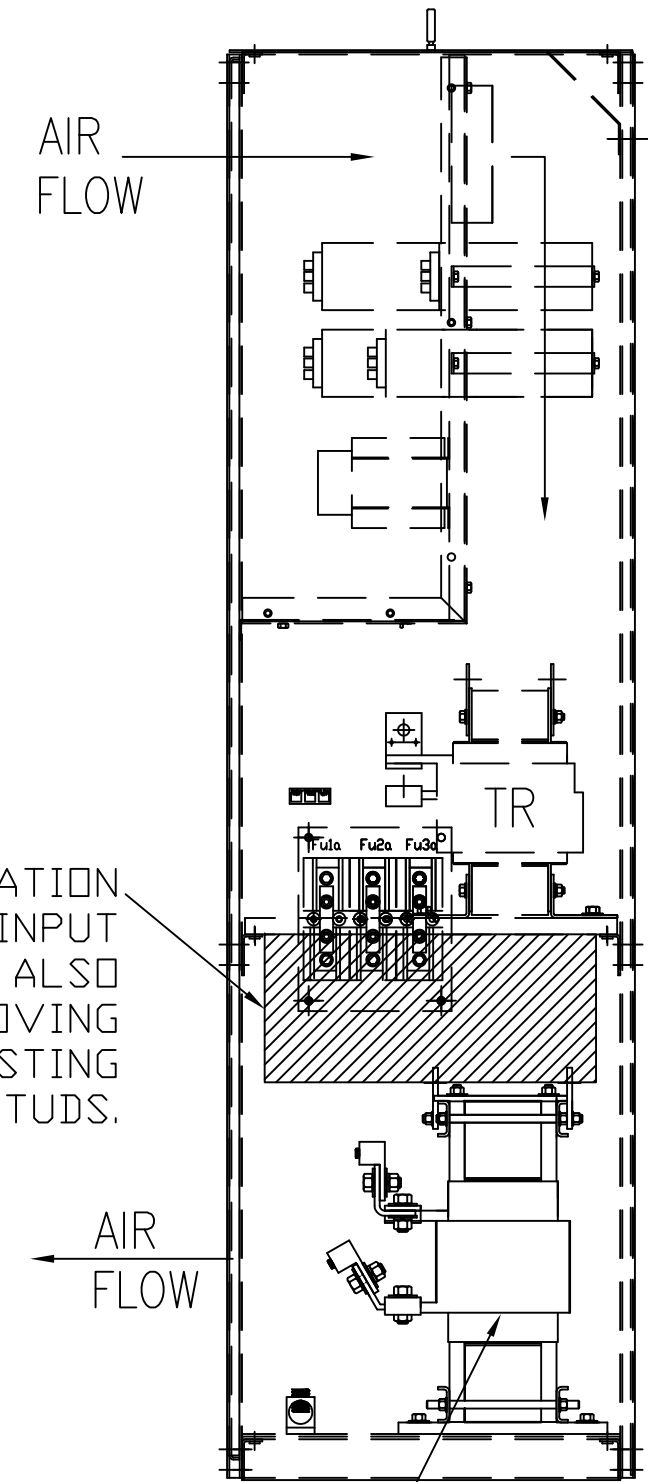


CUSTOMER CONNECTIONS:  
WIRE RANGE-TWO 350MCM-4  
TIGHTENING TORQUE 275 IN-LB.  
  
GROUND LUG:  
WIRE RANGE-ONE 600MCM-4  
TWO 250MCM-1/0  
TIGHTENING TORQUE 500 IN-LB.

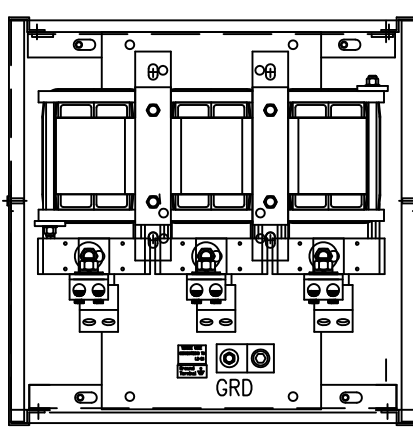


SUGGESTED LOCATION FOR CUSTOMERS INPUT (EITHER SIDE)

SUGGESTED LOCATION FOR CUSTOMERS INPUT OPPOSITE SIDE ALSO AVAILABLE BY MOVING FUSES AND TR TO EXISTING MOUNTING STUDS.



CUSTOMER CONNECTIONS:  
L1 L2 L3  
T1 T2 T3



SECTION B-B

UNIT SPECIFICATIONS:					
KVAR	HARMONIC	VOLT	HZ	PHASE	HP
105	5TH	600	60	3	350
ENCLOSURE		NEMA 1			
APPROX.WT. LBS.		725			

SYMBOL	TCI PART NUMBER
LR	KDRX42T
TR	KTR105C65HG
CAP1 ,2 ,3 ,4. (20 KVAR)	KCAP20C6B
CAP5. (10 KVAR)	KCAP10C6B
CAP6. (15 KVAR)	KCAP15C6B
XFMR.	25292
Fu1a;2a;3a	13333
Fu4,6	24390
Fu5	23977

TCI, LLC CLAIMS PROPRIETARY RIGHTS IN THE MATERIAL HEREIN DISCLOSED. IT IS SUPPLIED WITHOUT PREJUDICE TO ANY PATENT RIGHTS OF TCI AND MAY NOT BE REPRODUCED OR USED TO MANUFACTURE ANYTHING SHOWN THEREIN WITHOUT WRITTEN PERMISSION FROM TCI.

NO	REVISION	DATE	BY	TOLERANCES (EXCEPT AS NOTED):
B	2786 REMOVE COLOR	11/14/11	DSW	.XX ±.03
A	2516, CAP WAS 18612			.XXX±.01
	CAP WAS 17816 & 7	9/30/07	RJC	FRACTIONAL ± 1/32
				ANGULAR ± 1/2°
NO	REVISION	DATE	BY	

**TCI**® W132 N10611 Grant Drive  
Germanstown, WI 53022

HG350CW01ST, HG7 STANDARD  
350 HP, 600/3/60, TYPE 1

DRN. BY	DSW	DATE	3/18/05	DWG. NO.	102501DG
SCALE	TO FIT	SIZE	C	SHT.1 OF 1	

FOR SCHEMATIC SEE 25116

CUSTOMER IS RESPONSIBLE FOR INSTALLATION TO MEET ALL NATIONAL AND LOCAL ELECTRICAL CODES