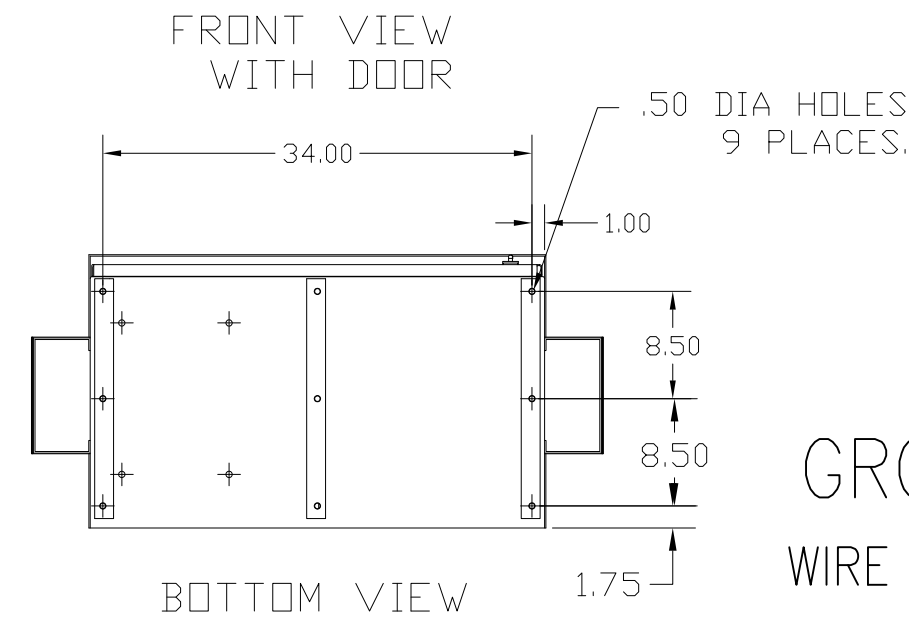
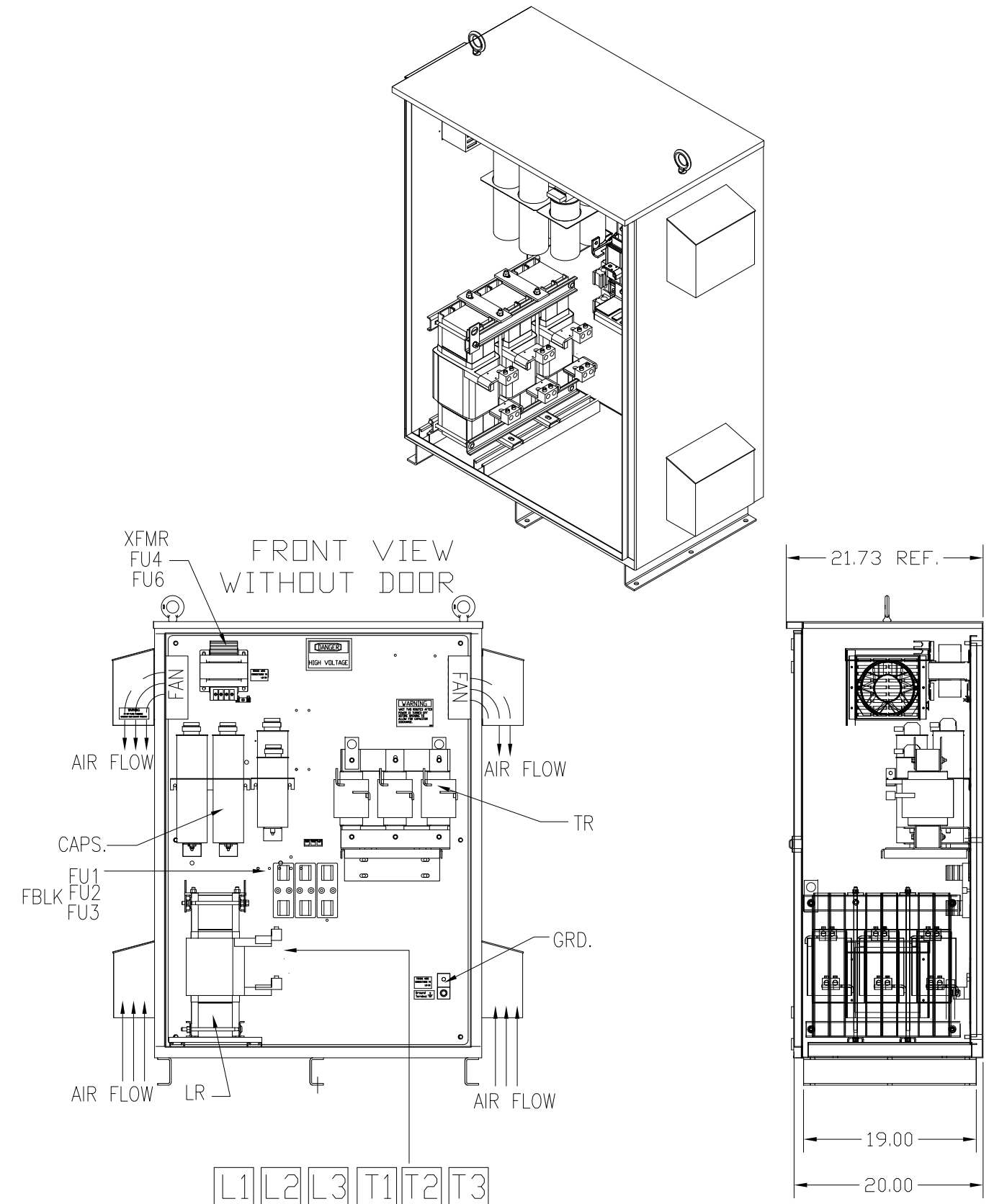
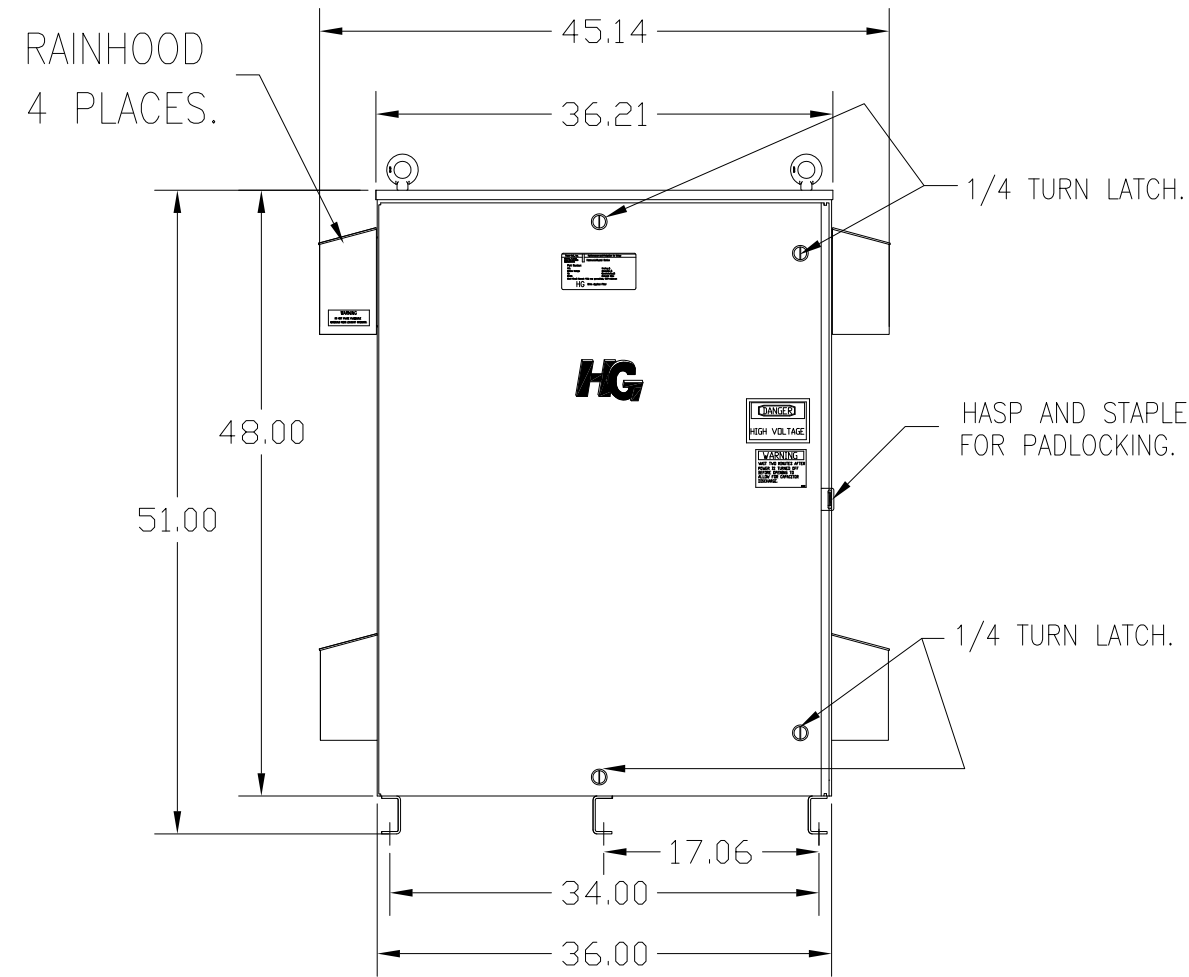
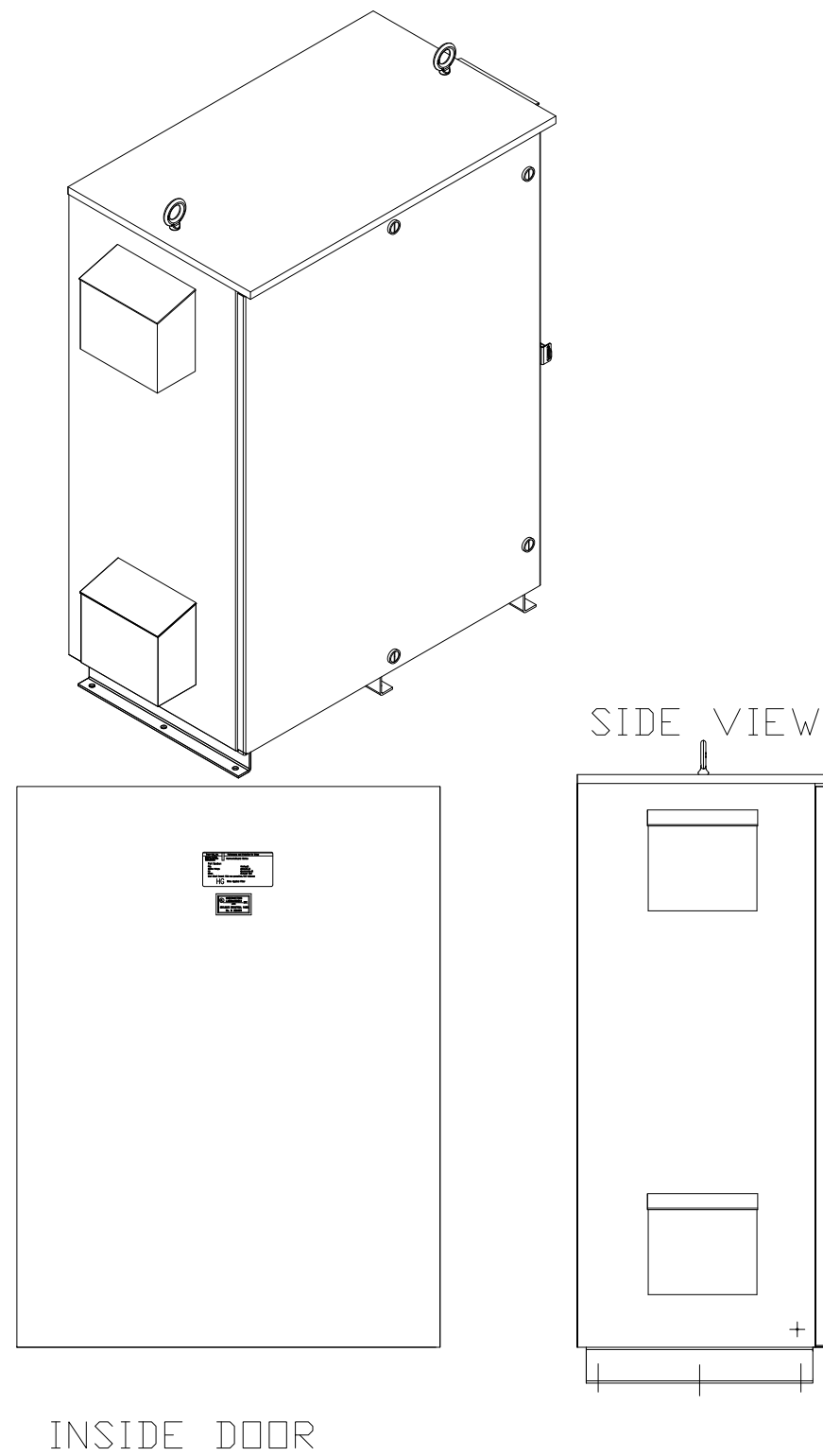


SEE DWG# 26757 FOR SCHEMATIC

CUSTOMER IS RESPONSIBLE FOR INSTALLATION TO MEET ALL NATIONAL AND LOCAL ELECTRICAL CODES.

NOTE: USE ONLY HUBS OR FITTINGS THAT COMPLY WITH UL514B FOR TYPE 3R ENCLOSURES.



SYMBOL	TCI PART NUMBER
LR	KDRX2T
TR	KTR105A65HG
CAP1 ,2 ,3 ,4. (20 KVAR)	27609
CAP5. (10 KVAR)	27607
CAP6. (15 KVAR)	27608
XFMR.	23899
Fu1a;2a;3a	11175
Fu4,6	14106
Fu5	23977

ALTERNATE	TCI PART NUMBER
CAP1 ,2 ,3 ,4. (20 KVAR)	KCAP20A6B
CAP5. (10 KVAR)	KCAP10A6B
CAP6. (15 KVAR)	KCAP15A6B

UNIT SPECIFICATIONS:					
KVAR	HARMONIC	VOLT	HZ	PHASE	HP
105	5TH	480	60	3	350
ENCLOSURE		UL TYPE 3R- COLOR WHITE			
APPROX.WT. LBS.		665			

GROUND LUG:
 WIRE RANGE—ONE 600MCM—4
 TWO 250MCM—1/0
 TIGHTENING TORQUE 500 IN—LB.

CUSTOMER CONNECTIONS:
 WIRE RANGE—TWO 350MCM—4
 TIGHTENING TORQUE 275 IN—LB.

HOLE TOL. +/- .005

TCI, LLC CLAIMS PROPRIETARY RIGHTS IN THE MATERIAL HEREIN DISCLOSED. IT IS SUPPLIED WITHOUT PREJUDICE TO ANY PATENT RIGHTS OF TCI AND MAY NOT BE REPRODUCED OR USED TO MANUFACTURE ANYTHING SHOWN THEREIN WITHOUT WRITTEN PERMISSION FROM TCI.				TOLERANCES (EXCEPT AS NOTED) DECIMAL	W132 N10611 Grant Drive Germantown, WI 53022
				.XX ±.12	
				.XXX ±.06	HG350AW03ST, 350HP 480/3/60 UL TYPE 3R
	B	2900 CHG TO ASC CAPS	3/6/13	DSW	FRACTIONAL ± 1/32
A	2641 ADD EYEBOLTS	10/13/09	DSW	ANGULAR ± 1/2°	SCALE TO FIT SIZE C
NO	REVISION	DATE	BY		SHT.1 OF 1