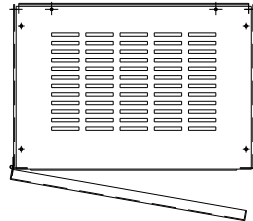
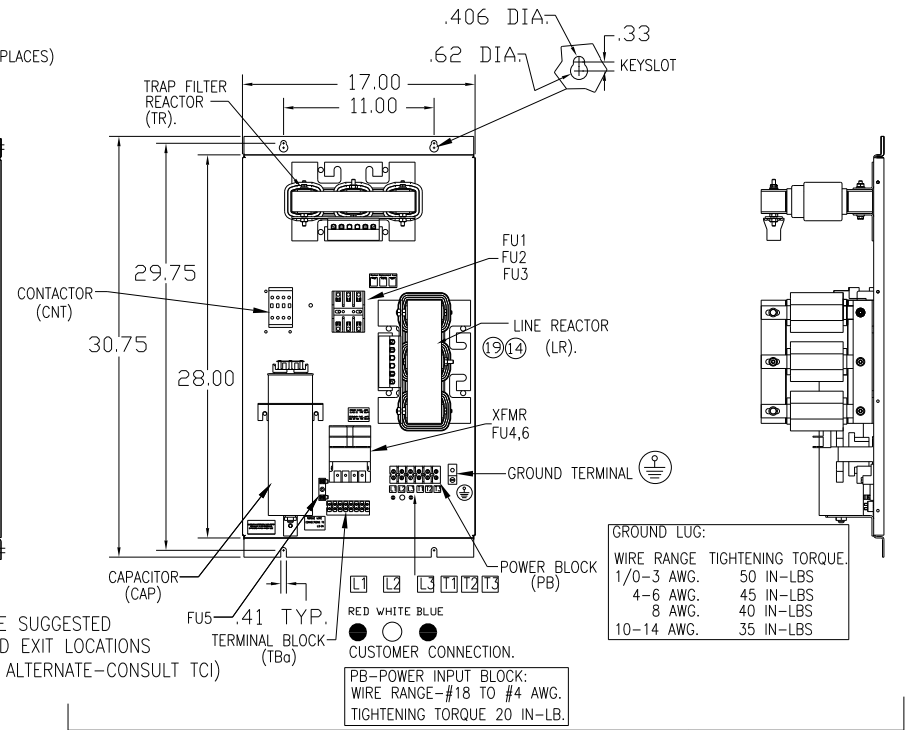
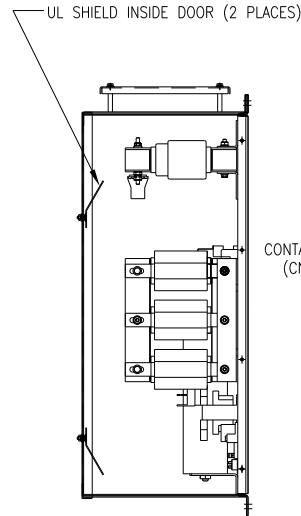
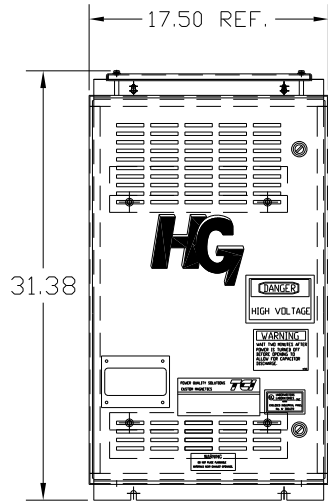
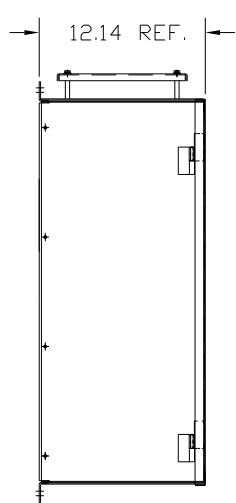


UNIT SPECIFICATIONS:					
KW	HARMONIC	VOLT	HZ	PHASE	FLA
30	5TH	400	50	3	60
ENCLOSURE		NEMA 1			
APPROX.WT. LBS.		165			

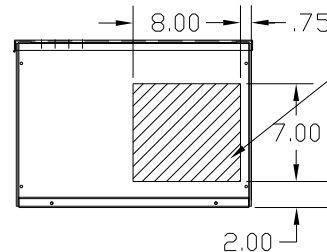


SYMBOL	TCI PART NUMBER
LR	KDRG31T
TR	KTR12L55HG
CAP1. (20 KVAR)	KCAP20A6B
XFMR.	24385
Fu1, 2, 3	11307
Fu4,6	13180
Fu5	24011
CNT	23372



GROUND LUG:

WIRE RANGE	TIGHTENING TORQUE
1/0-3 AWG.	50 IN-LBS
4-6 AWG.	45 IN-LBS
8 AWG.	40 IN-LBS
10-14 AWG.	35 IN-LBS



HATCHED AREAS ARE SUGGESTED CUSTOMER WIRE AND EXIT LOCATIONS (BOTTOM ENTRANCE ALTERNATE-CONSULT TCI)

CUSTOMER IS RESPONSIBLE FOR INSTALLATION TO MEET ALL NATIONAL AND LOCAL ELECTRICAL CODES.

SEE DRAWING# 27703 FOR SCHEMATIC

TOLERANCES (EXCEPT AS NOTED)		TOLERANCES (EXCEPT AS NOTED)		TOLERANCES (EXCEPT AS NOTED)	
DECIMAL	FRACTIONAL	DECIMAL	FRACTIONAL	DECIMAL	FRACTIONAL
XX ± .03	XXX ± .01	XX ± .03	XXX ± .01	XX ± .03	XXX ± .01
± 1/32	± 1/32	± 1/32	± 1/32	± 1/32	± 1/32
ANGULAR	± 1/2°	ANGULAR	± 1/2°	ANGULAR	± 1/2°

NO	REVISION	DATE	BY	SCALE	TO FIT	DRN. BY	DATE	DATE	DWG. NO.	SHT. 1 OF 1
A	AS BUILT	11/04/10	DSW			DSW	11/11/2010		104531DG	

**TCI** 7878 N. 86th STREET MILWAUKEE, WI 53224

HG30LW01STC, 30KW 400/3/50, ENCLOSED, W/CNT