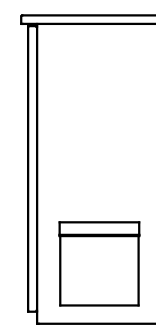
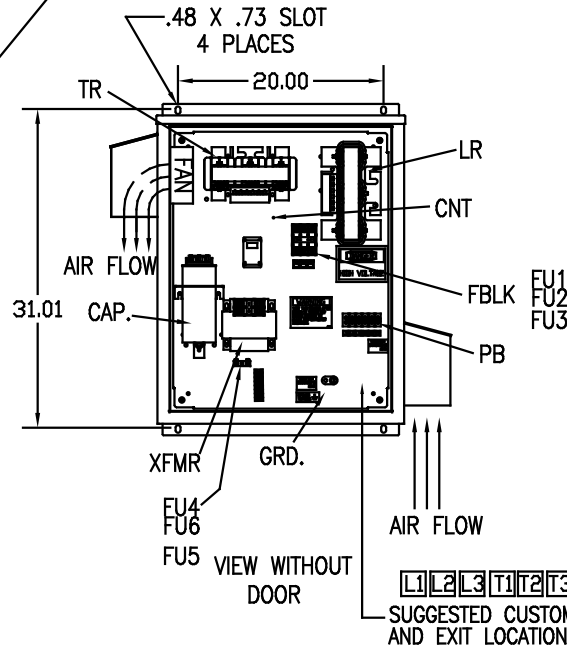
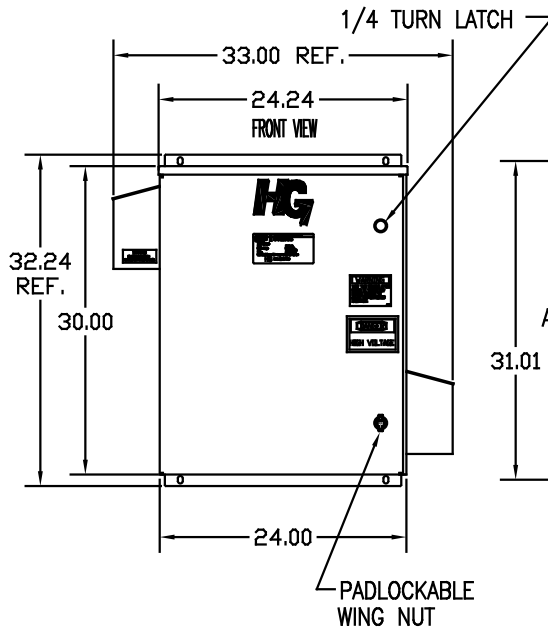
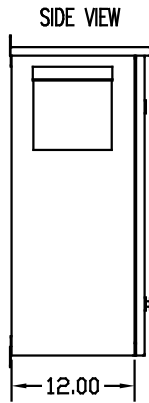
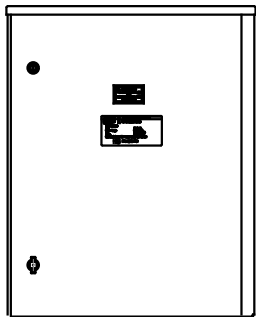
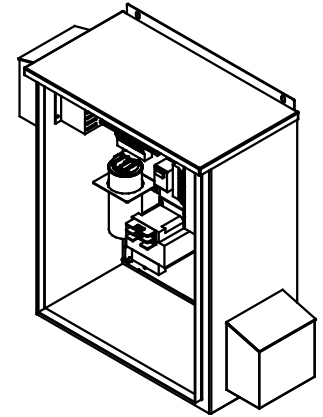
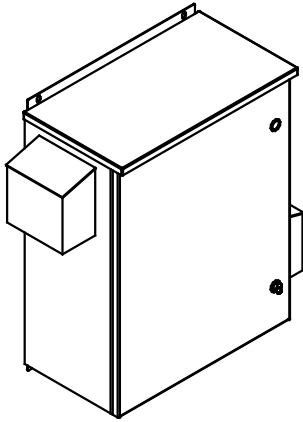


SEE DWG# 26972-1 FOR SCHEMATIC

CUSTOMER IS RESPONSIBLE FOR INSTALLATION
TO MEET ALL NATIONAL AND LOCAL ELECTRICAL CODES.

NOTE: USE ONLY HUBS OR FITTINGS THAT COMPLY
WITH UL514B FOR TYPE 3R ENCLOSURES.



UNIT SPECIFICATIONS:					
KVAR	HARMONIC	VOLT	HZ	PHASE	HP
10	5TH	600	60	3	30
ENCLOSURE		UL TYPE 3R			
COLOR		WHITE			
FEATURES		CONTACTOR			
APPROX.WT. LBS.		156			

SYMBOL	TCI PART NUMBER
LR	KDRH41T
TR	KTR10C65HG
CAP. (10 KVAR) 1 PLACE.	KCAP10C6A
XFMR.	24381
Fu1, 2, 3	11263
Fu4,6	23405
Fu5	17567
CNT	26739

PB-POWER INPUT BLOCK:
WIRE RANGE-#18 TO #4 AWG.
TIGHTENING TORQUE 20 IN-LB.

GROUND LUG:
WIRE RANGE-1/0 TO #14 AWG.
TIGHTENING TORQUE 200 IN-LB.

				TOLERANCES EXCEPT AS NOTED:	TCI 7878 N. 86th STREET MILWAUKEE, WI 53224
				DECIMAL	
				.XX ±.12	HG30CW03STC, 30HP 600/3/60 UL TYPE 3R
				.XXX±.06	
				FRACTIONAL ± 1/32	
				ANGULAR ± 1/2°	
NO	REVISION	DATE	BY	SCALE TO FIT	DSW 2/24/09 DATE APPROV DWG. NO. 103690DG SHT. 1 OF 1