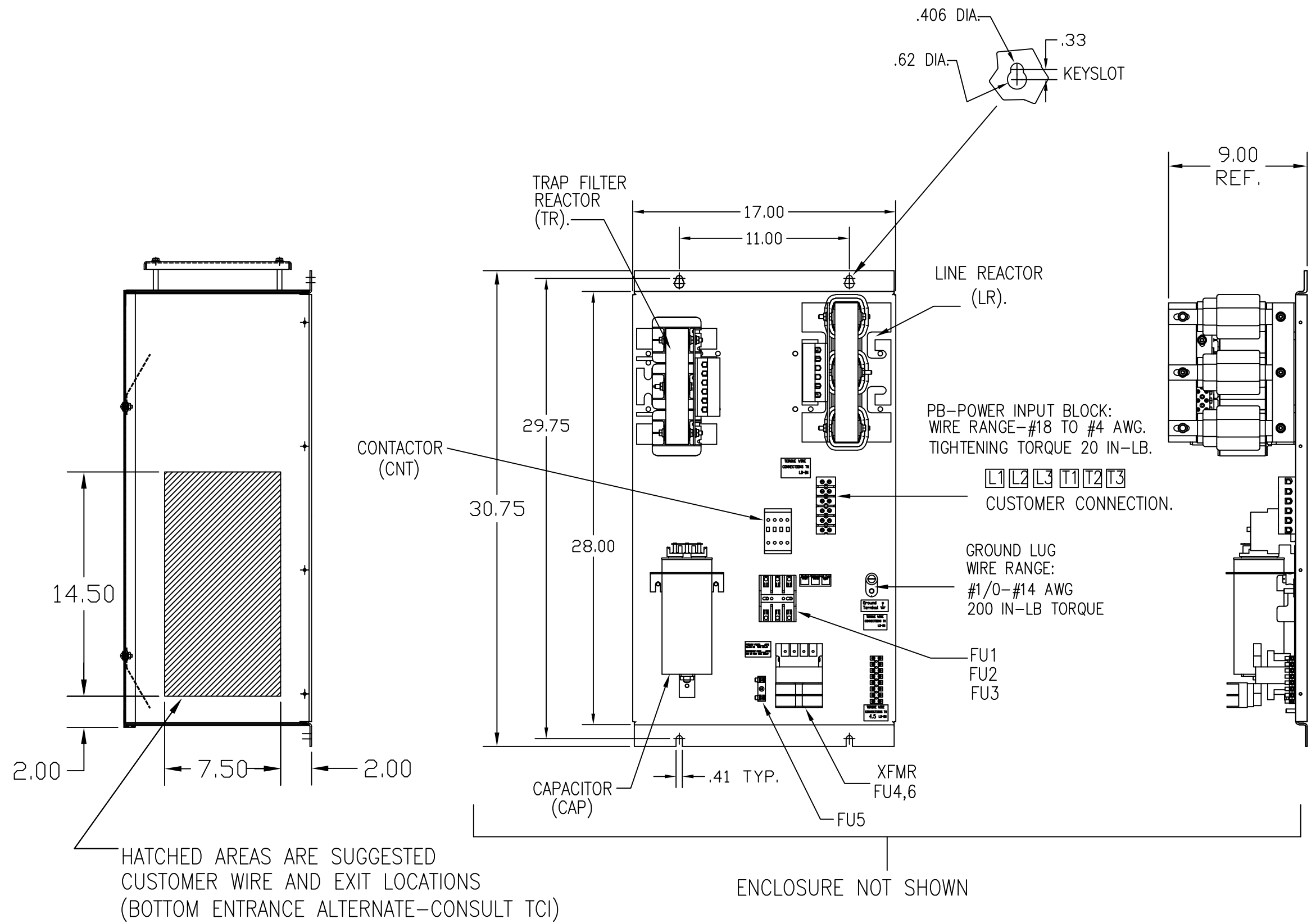


UNIT SPECIFICATIONS:					
KVAR	HARMONIC	VOLT	HZ	PHASE	HP
10	5TH	600	60	3	30
ENCLOSURE		NEMA 1			
OPTIONS		WITH CONTACTOR			
APPROX.WT. LBS.		135			

SYMBOL	TCI PART NUMBER
LR	KDRH41T
TR	KTR10C65HG
CAP	KCAP10C6B
XFMR.	24385
Fu1, 2, 3	22665
Fu4,6	24126
Fu5	13364
CNT	12434



SEE DWG# 26878 FOR SCHEMATIC

CUSTOMER IS RESPONSIBLE FOR INSTALLATION TO MEET ALL NATIONAL AND LOCAL ELECTRICAL CODES.

TOLERANCES (EXCEPT AS NOTED)				TCI® W132 N10611 Grant Drive Germentown, WI 53022	
DECIMAL				<b>HG30CW01STC 30HP</b> 600/3/60, ENCLOSED, WITH CNT	
.XX ± .03					
.XXX ± .01					
FRACTIONAL				DRN. BY DSW DATE 11/12/08 DWG. NO. 103549DG	
± 1/32				SCALE TO FIT	
ANGULAR				APRV. C	
± 1/2°				SHT. 1 OF 1	
A	2702 REVISED UL SHIELD	12/27/10	RJC		
NO	REVISION	DATE	BY		