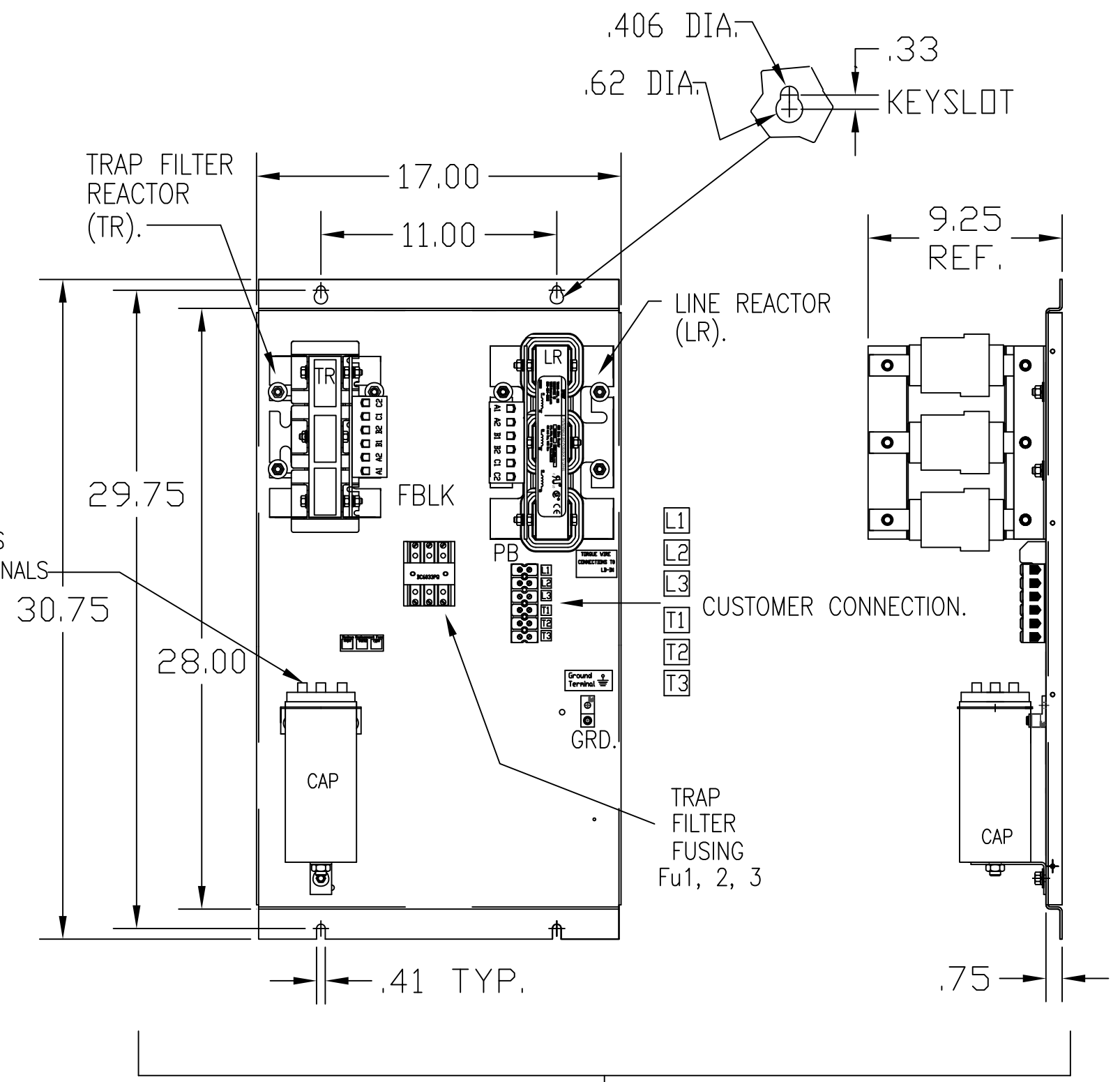
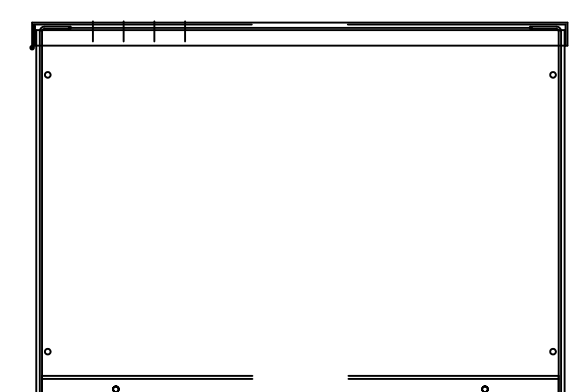
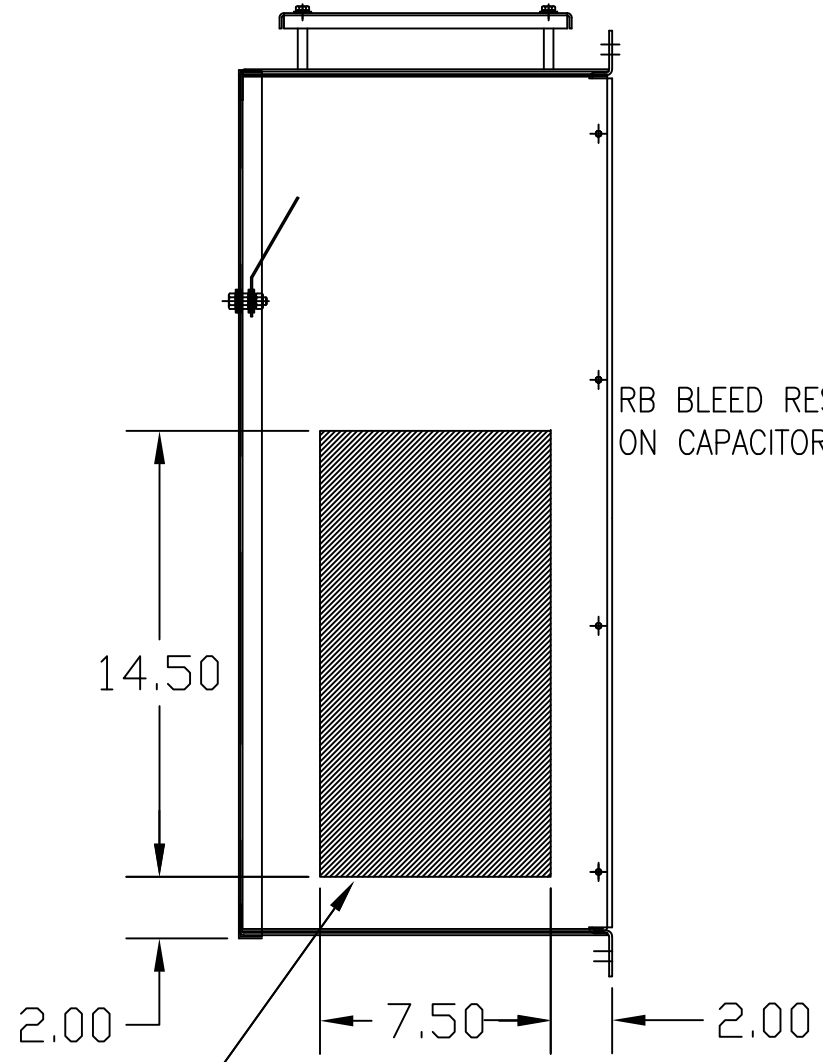
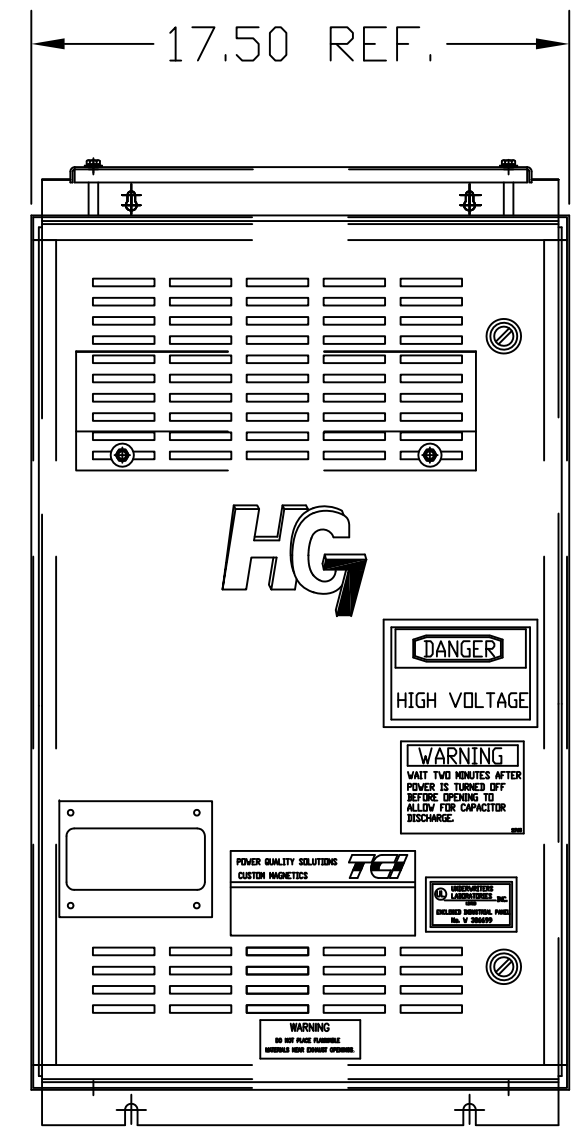
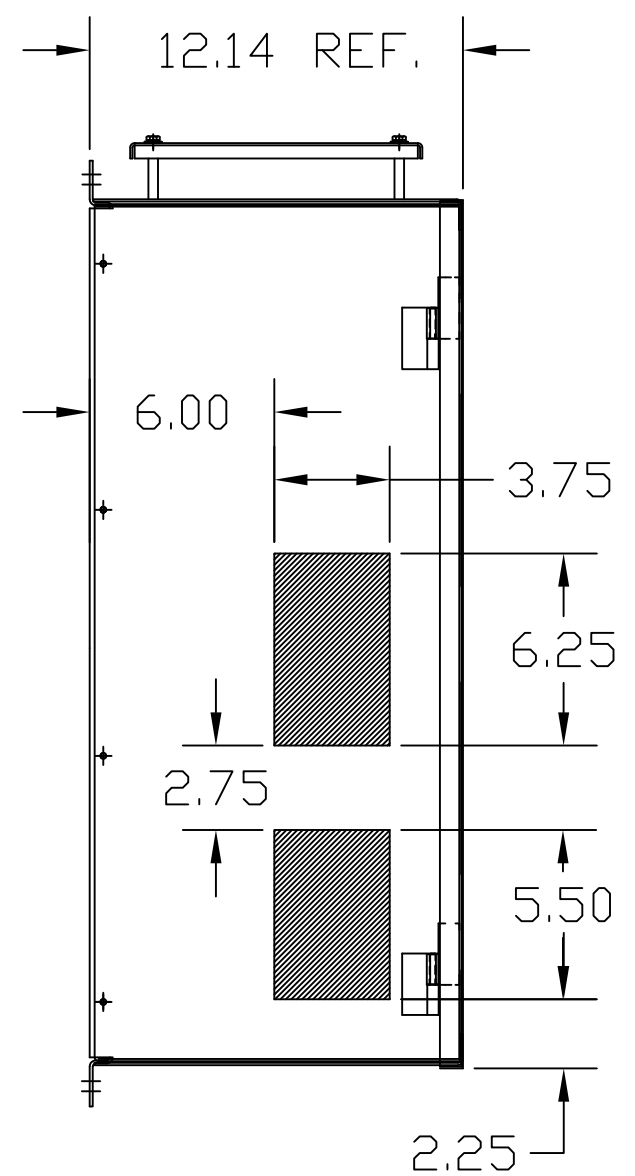
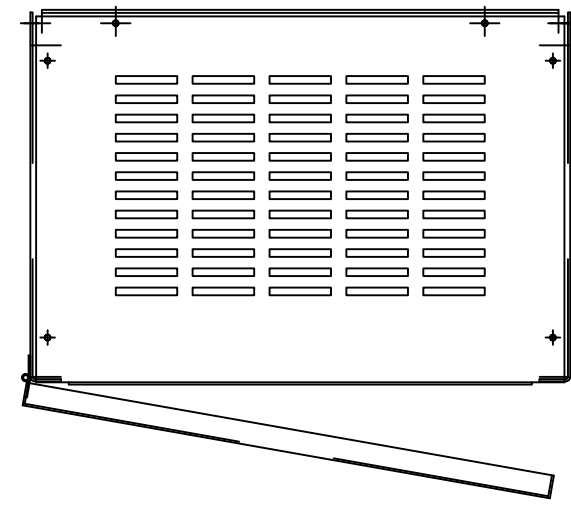


UNIT SPECIFICATIONS:					
KVAR HARMONIC	VOLT	HZ	PHASE	HP	
10	5TH	600	60	3	30
ENCLOSURE	NEMA 1				
APPROX.WT. LBS.	130				

SYMBOL	TCI PART NUMBER
LR	KDRH41T
TR	KTR10C65HG
CAP.	KCAP10C6B
Fu1, 2, 3	22665



HATCHED AREAS ARE SUGGESTED CUSTOMER WIRE AND EXIT LOCATIONS (BOTTOM ENTRANCE ALTERNATE-CONSULT TCI)

ENCLOSURE NOT SHOWN

SEE 25114 FOR SCHEMATIC

PB-POWER INPUT BLOCK:
WIRE RANGE-#18 TO #4 AWG.
TIGHTENING TORQUE 20 IN-LB.

CUSTOMER IS RESPONSIBLE FOR INSTALLATION TO MEET ALL NATIONAL AND LOCAL ELECTRICAL CODES.

GROUND LUG:
WIRE RANGE-1/0 TO #14 AWG.
1/0 AWG thru 2 AWG 50 IN-LBS. MAX.
4 AWG thru 6 AWG 45 IN-LBS. MAX.
8 AWG 40 IN-LBS. MAX.
10 AWG thru 14 AWG 35 IN-LBS. MAX.

TCI, LLC CLAIMS PROPRIETARY RIGHTS IN THE MATERIAL HEREIN DISCLOSED. IT IS SUPPLIED WITHOUT PREJUDICE TO ANY PATENT RIGHTS OF TCI AND MAY NOT BE REPRODUCED OR USED TO MANUFACTURE ANYTHING SHOWN THEREIN WITHOUT WRITTEN PERMISSION FROM TCI.				TOLERANCES (EXCEPT AS NOTED): DECIMAL	TCI® W132 N10611 Grant Drive Germantown, WI 53022	
				.XX ±.03 .XXX ±.01		
	B	2702 RVSD FUSEBLK SHIELD	9/2/10	RJC	FRACTIONAL ± 1/32	HG30CW01ST, HG7 STANDARD 30HP, 600/3/60, TYPE 1
	A	2516, CAP WAS 17816	9/30/07	RJC	ANGULAR ± 1/2°	
NO	REVISION	DATE	BY	SCALE TO FIT	DRN. BY DSW DATE 3/15/05 DVG. NO. 102479DG SIZE C	