

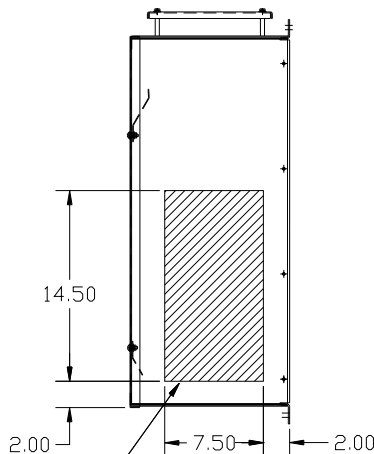
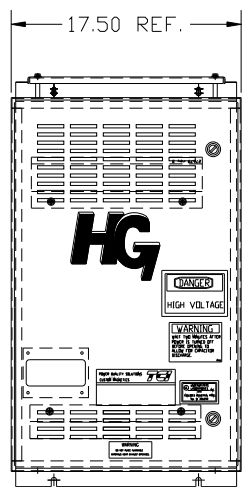
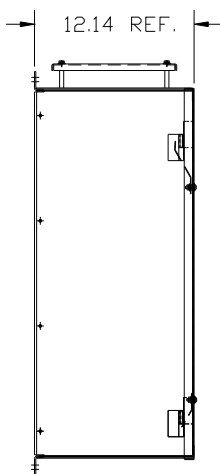
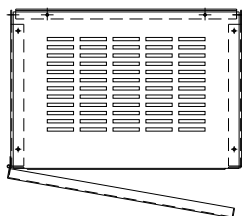
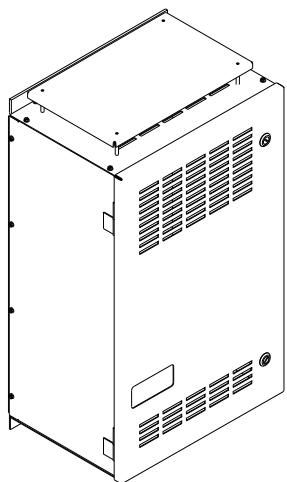
SEE 26824 FOR SCHEMATIC

CUSTOMER CONNECTIONS

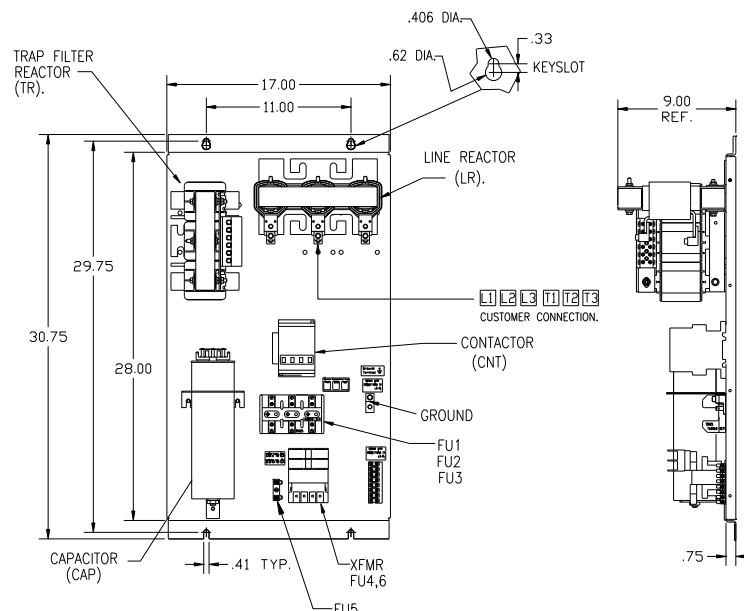
L1 L2 L3 T1 T2 T3

AND GROUND LUG.

WIRE SIZE (AWG)	RATED TORQUE (IN-LBS)
2/0-3	50
4-6	45
8	40
10-14	35



HATCHED AREAS ARE SUGGESTED CUSTOMER WIRE AND EXIT LOCATIONS (BOTTOM ENTRANCE ALTERNATE-CONSULT TC)



HG30BW01STC	
COMPONENTS	
LINE REACTOR LR	X
TRAP REACTOR TR	X
CAPACITOR CAP	X
TRAP FUSING FU1,2,3	X
XFMR	X
XFMR FU4,6	X
XFMR FU5	X
CNT	X

UNIT SPECIFICATIONS:					
KVAR HARMONIC	10	VOLT	5TH	HZ	240 60
PHASE	3	HP	30		
ENCLOSURE	NEMA 1				
	WITH CONTACTOR				
APPROX.WT. LBS.	155				

CUSTOMER IS RESPONSIBLE FOR INSTALLATION TO MEET ALL NATIONAL AND LOCAL ELECTRICAL CODES.

				TOLERANCES (EXCEPT AS NOTED)		TCI 7878 N. 86th STREET MILWAUKEE, WI 53224	
				DECIMAL		HG30BW01STC, 30HP	
				.XX ± .03		240/3/60, ENCLOSED, WITH CNT	
				XXX ± .01		DRN. BY DSW DATE 10/15/08 DWG. NO. 103593DG	
B	3042 LUG TORQ	CHG	2/21/14	BMZ	FRACTIONAL ± 1/32	SCALE TO FIT	
A	2702 RVSD UL SHIELD		8/17/11	RJC	ANGULAR ± 1/2°	APRVD C	
NO	REVISION		DATE	BY		SHT. 1 OF 1	