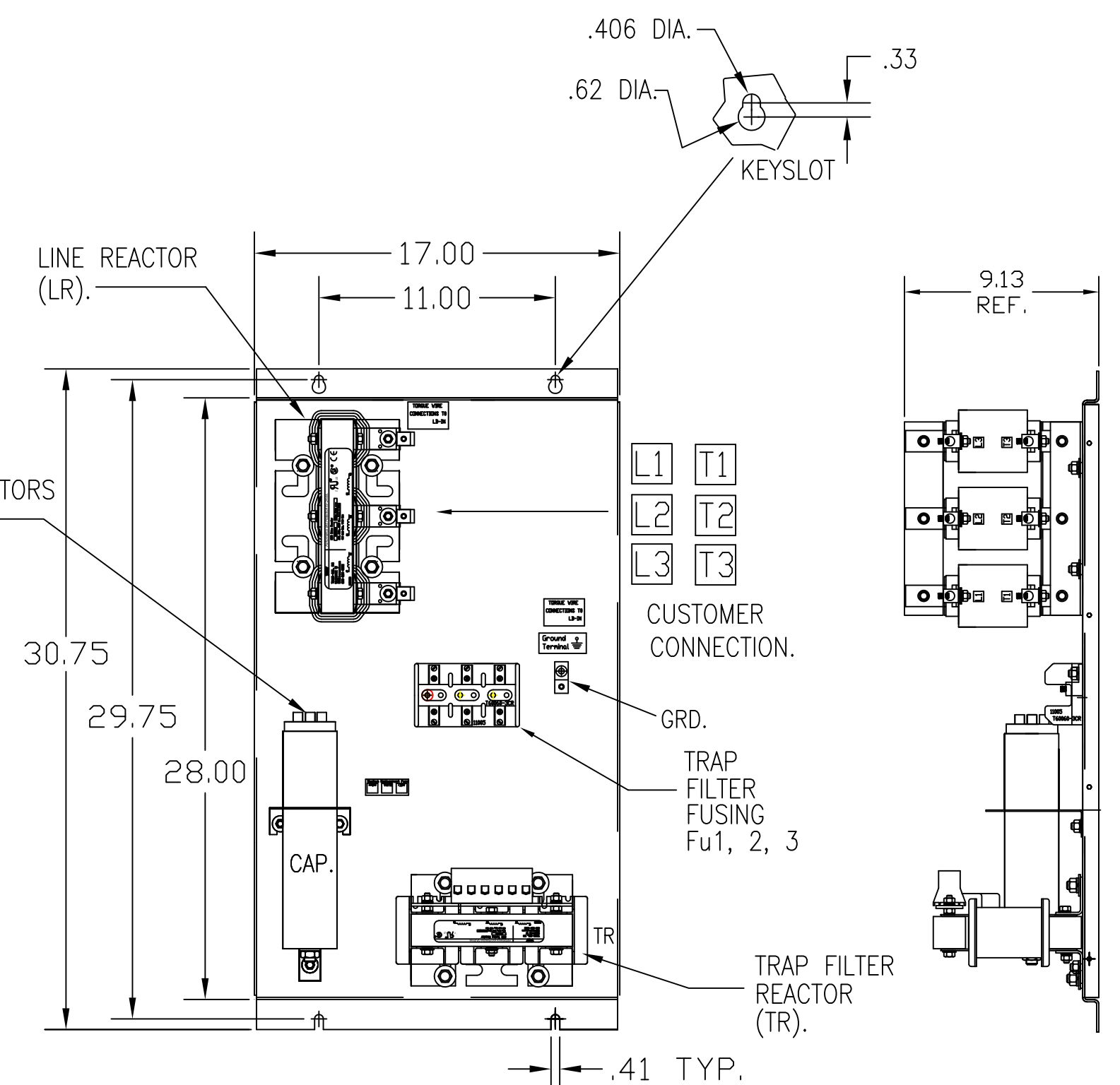
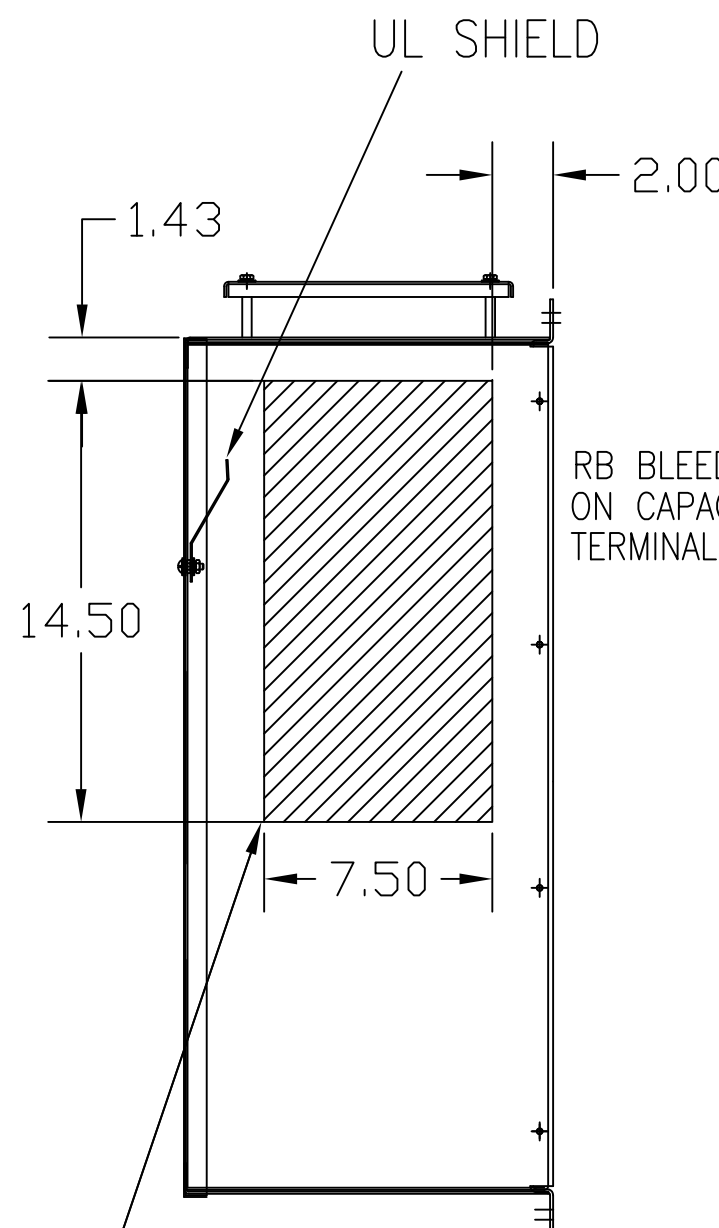
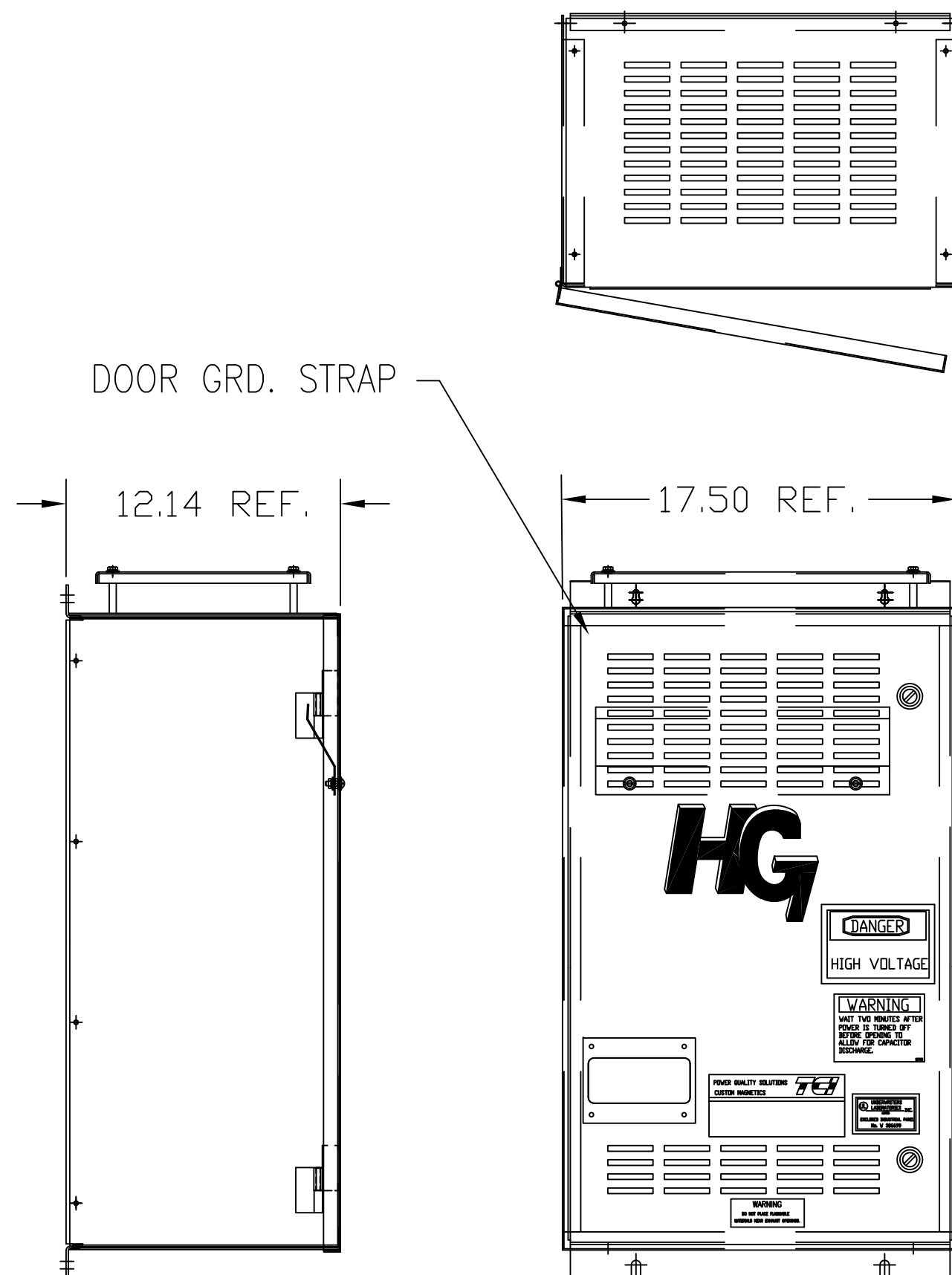


UNIT SPECIFICATIONS:					
KVAR HARMONIC	VOLT	HZ	PHASE	HP	
10	5TH	240	60	3	30
ENCLOSURE	NEMA 1				
APPROX.WT. LBS.	150				

HG30BW01ST	
COMPONENTS	
LINE REACTOR LR	X
TRAP REACTOR TR	X
CAPACITOR CAP	X
TRAP FUSING FU1,2,3	X



HATCHED AREAS ARE SUGGESTED CUSTOMER WIRE ENTRANCE AND EXIT LOCATIONS (BOTTOM ENTRANCE ALTERNATE-CONSULT TCI)

CUSTOMER CONNECTIONS

L1	L2	L3	T1	T2	T3
----	----	----	----	----	----

 AND GROUND LUG.

WIRE SIZE (AWG)	RATED TORQUE (IN-LBS)
2/0-3	50
4-6	45
8	40
10-14	35

FOR SCHEMATIC SEE 25179

CUSTOMER IS RESPONSIBLE FOR INSTALLATION TO MEET ALL NATIONAL AND LOCAL ELECTRICAL CODES.

TCI, LLC CLAIMS PROPRIETARY RIGHTS IN THE MATERIAL HEREIN DISCLOSED. IT IS SUPPLIED WITHOUT PREJUDICE TO ANY PATENT RIGHTS OF TCI AND MAY NOT BE REPRODUCED OR USED TO MANUFACTURE ANYTHING SHOWN THEREIN WITHOUT WRITTEN PERMISSION FROM TCI.				TOLERANCES (EXCEPT AS NOTED): DECIMAL	W132 N10611 Grant Drive Germantown, WI 53022	
	C	3042 LUG TORQ CHG	2/21/14	BMZ		.XX ±.03
	B	2702 RVSD UL SHIELD				.XXX ±.01
		COLOR WAS BLACK	1/25/12	RJC	FRACTIONAL ± 1/32	
	A	2516, CAP WAS 17813	9/30/07	RJC	ANGULAR ± 1/2°	
NO	REVISION	DATE	BY	SCALE TO FIT	DRN. BY DSW DATE 10/25/13 DVG. NO. 102513DG SIZE C	

HG30BW01ST, HG7 STANDARD
 30HP, 240/3/60, TYPE 1
 SHT.1 OF 1