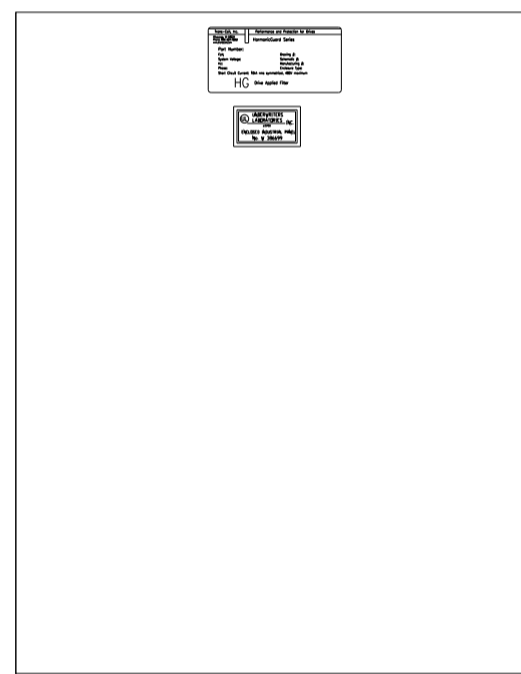
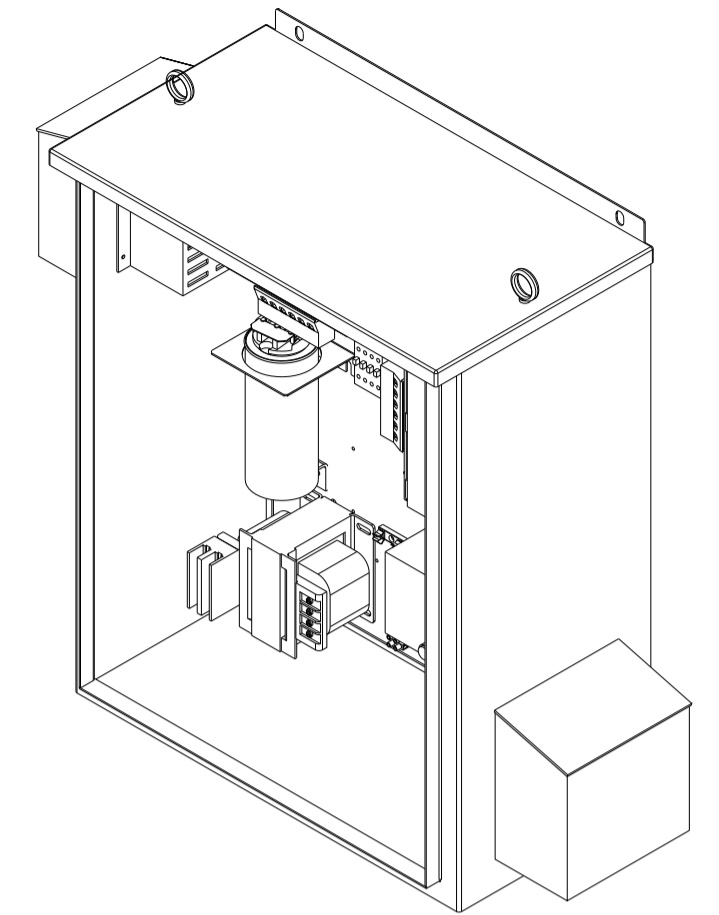
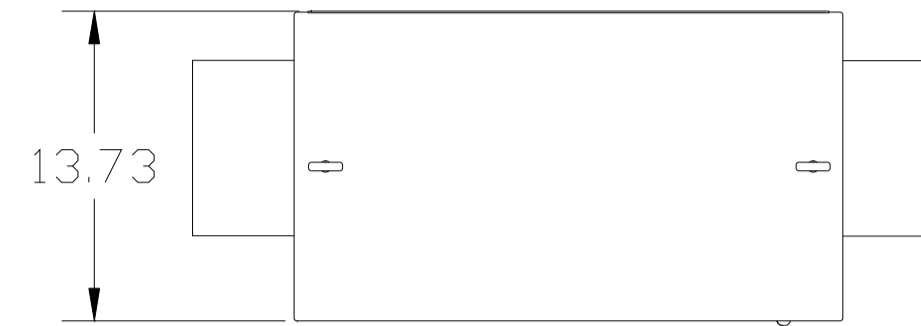
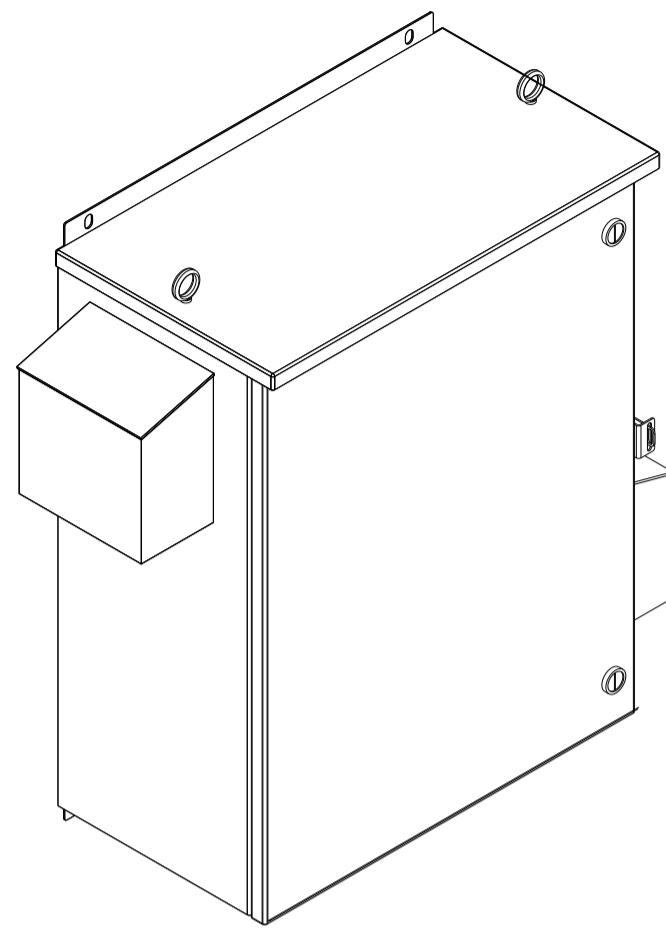


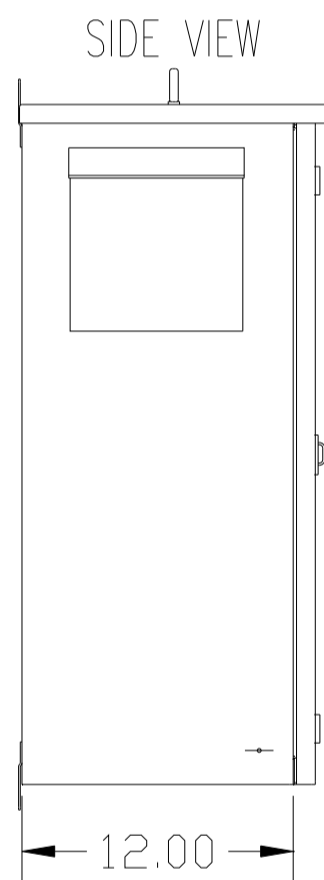
CUSTOMER IS RESPONSIBLE FOR INSTALLATION TO MEET ALL NATIONAL AND LOCAL ELECTRICAL CODES.

NOTE: USE ONLY HUBS OR FITTINGS THAT COMPLY WITH UL514B FOR TYPE 3R ENCLOSURES.

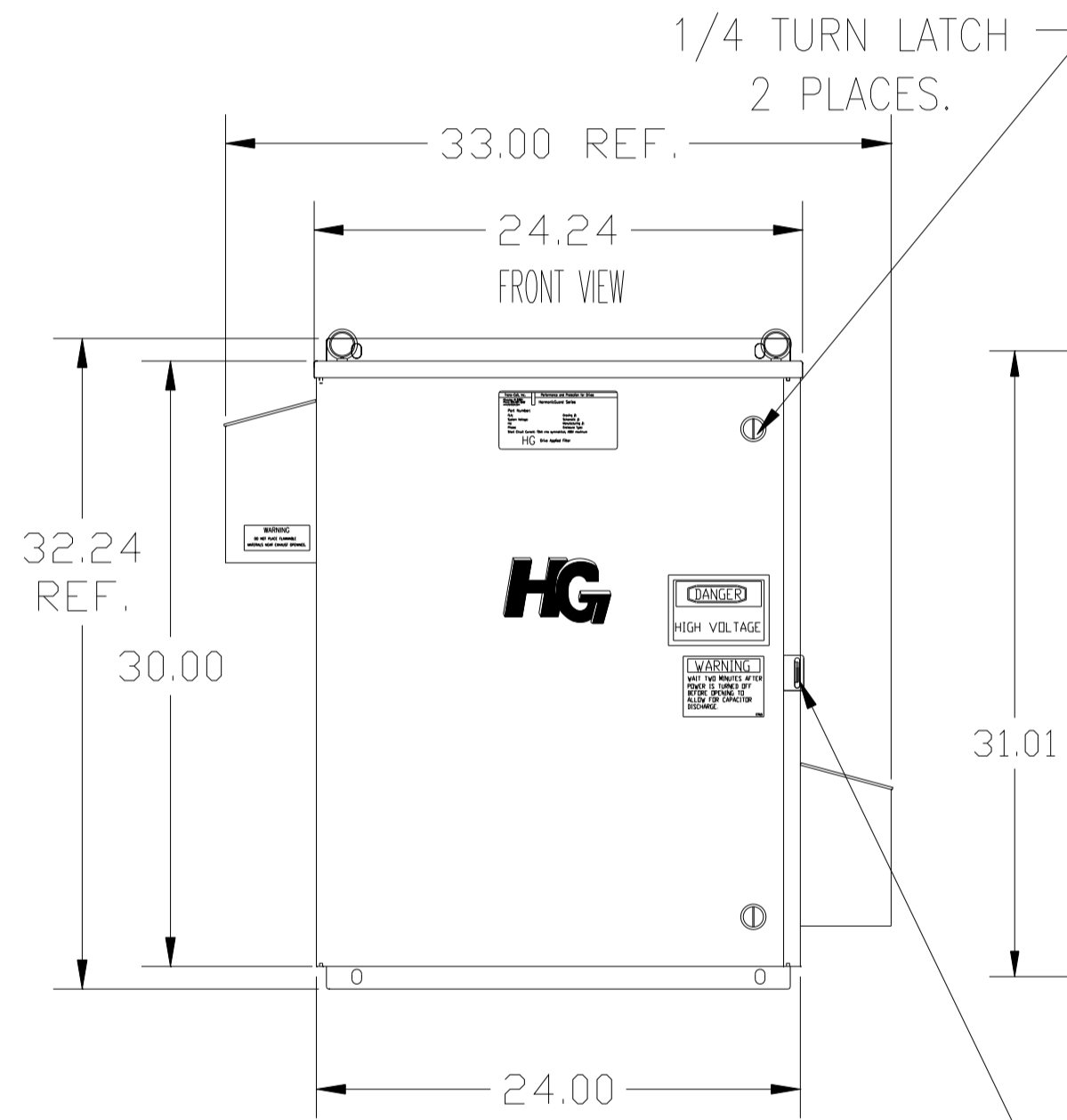
SEE DWG# 26750 FOR SCHEMATIC



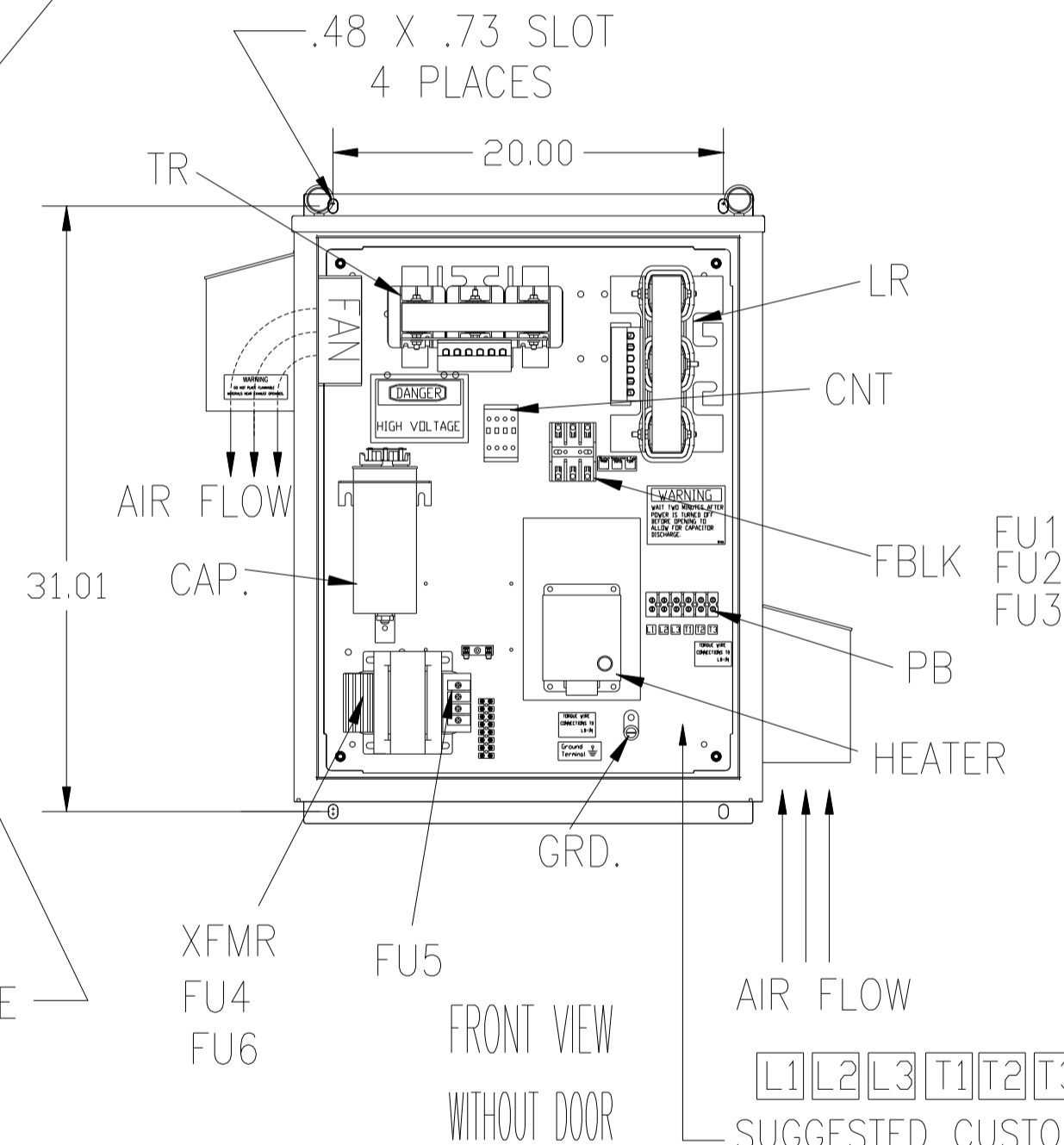
INSIDE DOOR



SIDE VIEW



HASP AND STAPLE FOR PADLOCKING.

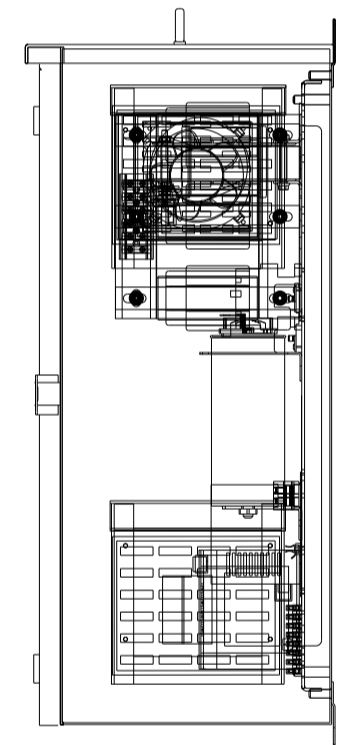


FRONT VIEW WITHOUT DOOR

AIR FLOW

L1 L2 L3 T1 T2 T3

SUGGESTED CUSTOMER WIRE ENTRY AND EXIT LOCATION



UNIT SPECIFICATIONS:						
KVAR	HARMONIC	VOLT	HZ	PHASE	HP	
10	5TH	480	60	3	30	
ENCLOSURE		UL TYPE 3R				
COLOR		WHITE				
APPROX.WT. LBS.		135				

SYMBOL	TCI PART NUMBER
LR	KDRH1T
TR	KTR10A65HG
CAP (10 KVAR)	KCAP10A6B
XFMR.	23896
Fu1, 2, 3	11307
Fu4,6	24009
Fu5	17567
CNT	12434
HEATER (200 WATT)	11638

PB—POWER INPUT BLOCK:
WIRE RANGE—#18 TO #4 AWG.
TIGHTENING TORQUE 20 IN-LB.

GROUND LUG:
WIRE RANGE—1/0 TO #14 AWG.
TIGHTENING TORQUE 200 IN-LB.

TOLERANCES (EXCEPT AS NOTED)		TCI		7878 N. 86th STREET MILWAUKEE, WI 53224	
DECIMAL	FRACTIONAL	DRN BY	DATE	DWG. NO.	
.XX ± .12	± 1/32	DSW	8/21/08	103725DG	
.XXX ± .06	ANGULAR ± 1/2°	SCALE TO FIT	APRVD.	C	SHT. 1 OF 1
A 2641 ADD EYEBOLTS		10/21/09		DATE	
NO REVISION		DATE		BY	