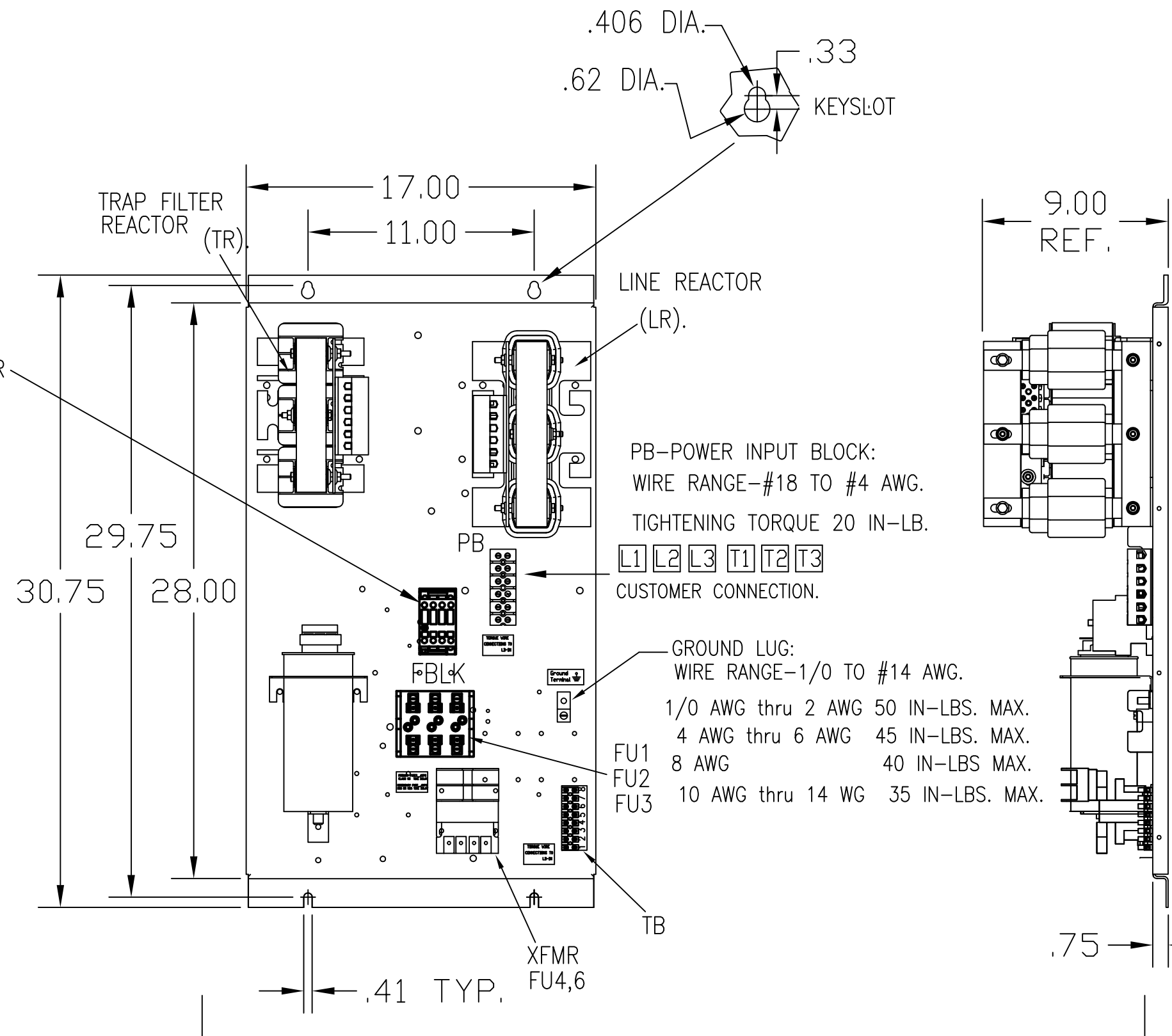
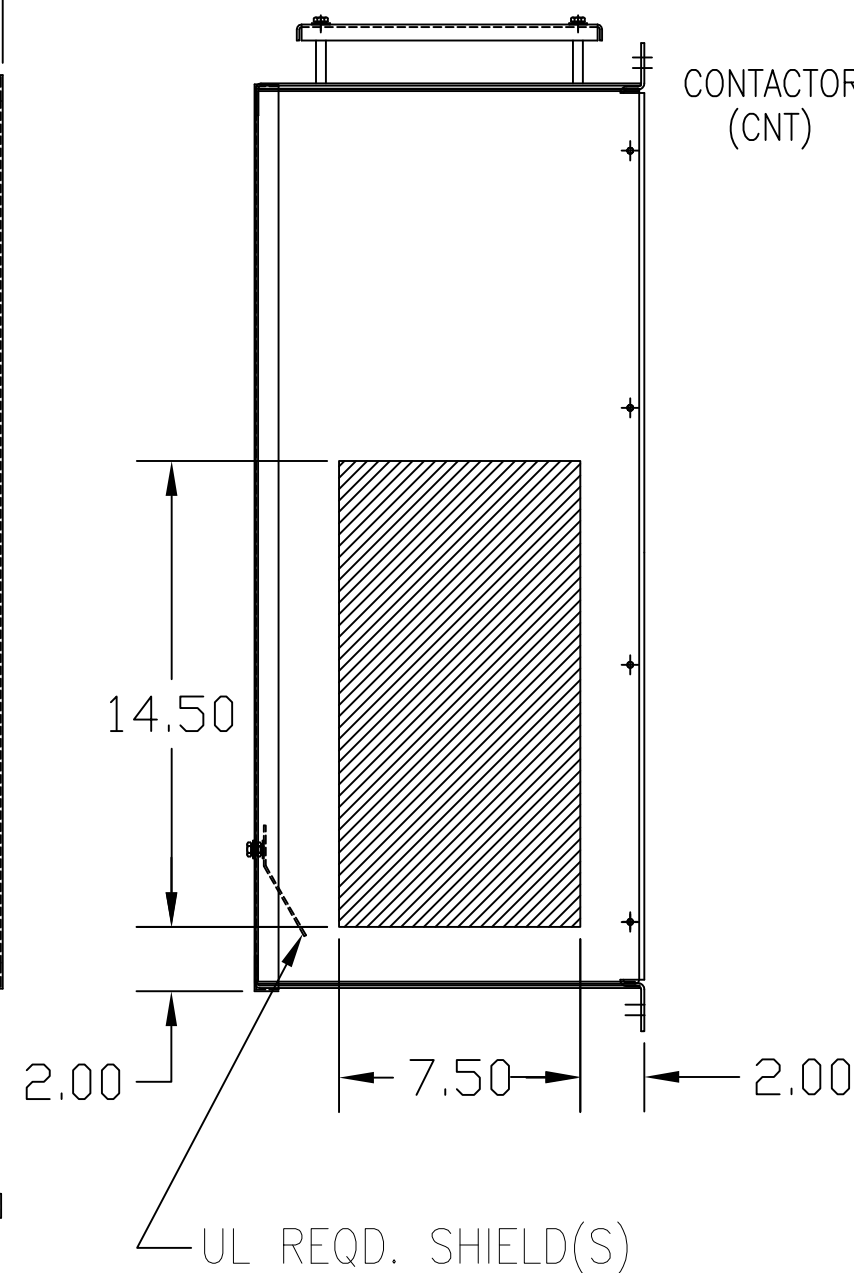
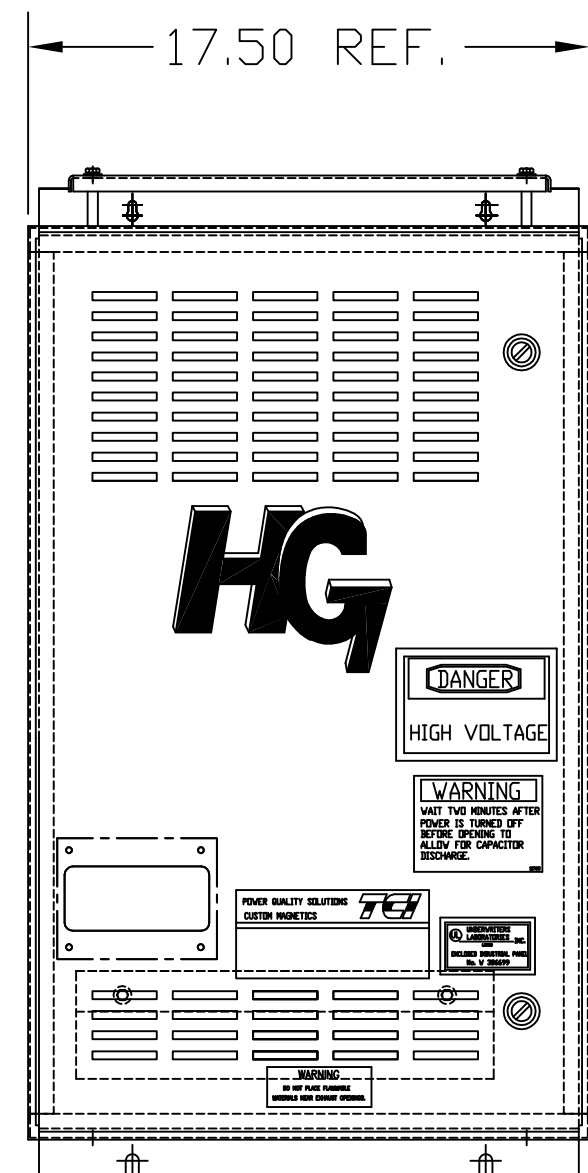
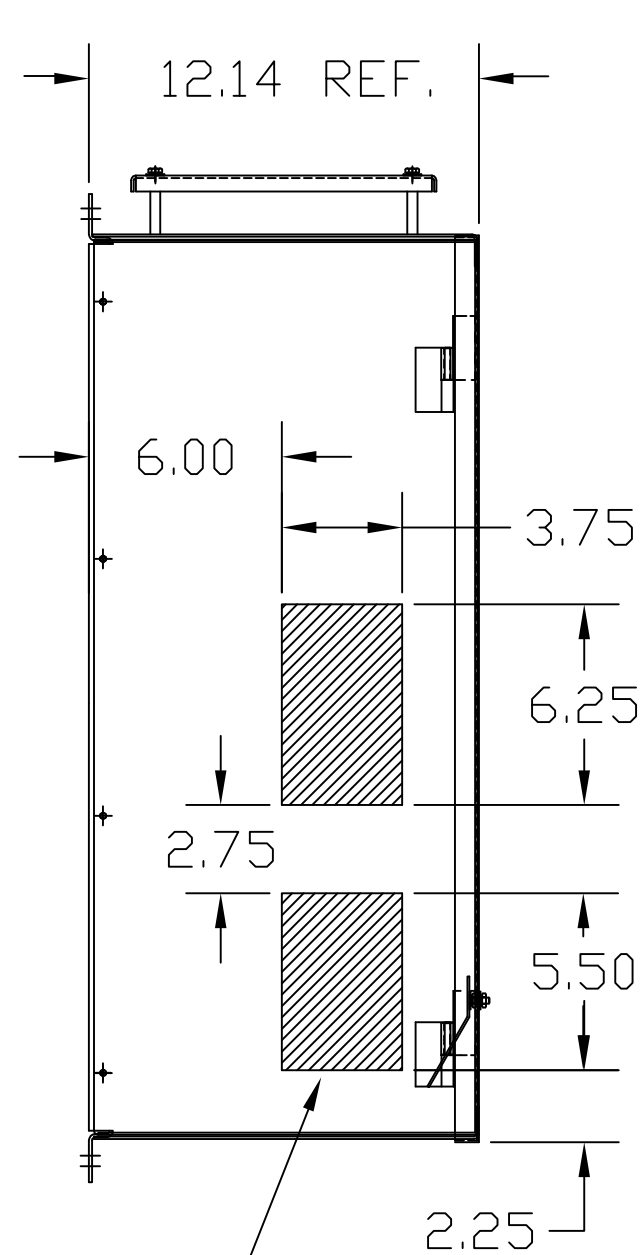
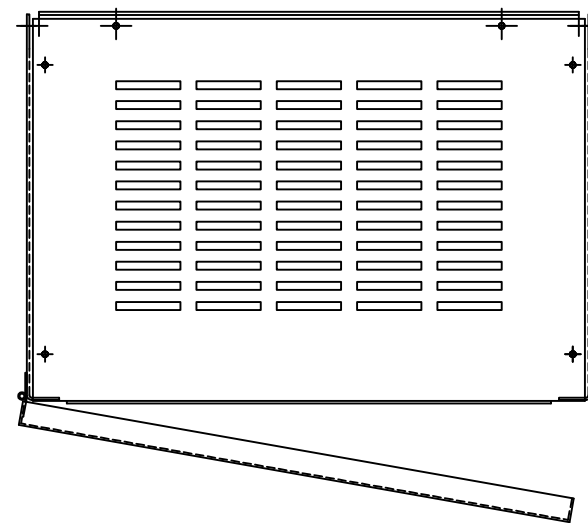


| UNIT SPECIFICATIONS: | | | | | |
|----------------------|----------|--------|----|-------|----|
| KVAR | HARMONIC | VOLT | HZ | PHASE | HP |
| 10 | 5TH | 480 | 60 | 3 | 30 |
| ENCLOSURE | | NEMA 1 | | | |
| APPROX.WT. LBS. | | 135 | | | |

| HG30AW01STC | |
|---------------------|---|
| COMPONENTS | |
| LINE REACTOR LR | X |
| TRAP REACTOR TR | X |
| CAPACITOR CAP | X |
| TRAP FUSING FU1,2,3 | X |
| XFMR | X |
| XFMR FU4,6 | X |
| CNT | X |



ENCLOSURE NOT SHOWN

SEE DWG# 26689 FOR SCHEMATIC
 CUSTOMER IS RESPONSIBLE FOR INSTALLATION
 TO MEET ALL NATIONAL AND LOCAL ELECTRICAL CODES.

HATCHED AREAS ARE SUGGESTED
 CUSTOMER WIRE ENTRANCE AND EXIT LOCATIONS
 (BOTTOM ENTRANCE ALTERNATE-CONSULT TCI)

| NO | REVISION | DATE | BY | TOLERANCES (EXCEPT AS NOTED) | DECIMAL | ANGULAR | SCALE | DRN. BY | DATE | APRVD. | DWG. NO. |
|----|-------------------------|---------|-----|------------------------------|---------|---------|--------|---------|---------|--------|----------|
| G | 3267 CNT CHANGE | 9/8/15 | BWM | .XX ±.03 | | | TO FIT | DSW | 7/07/08 | | 103505DG |
| F | 3014 FBLK CHG | 1/24/14 | BMZ | .XXX±.01 | | | | | | | |
| E | 2900 CHG TO ASC CAPS | 2/14/13 | DSW | FRACTIONAL ± 1/32 | | | | | | | |
| D | 2759 CHG BACK TO VISHAY | 6/29/11 | DSW | ANGULAR ± 1/2° | | | | | | | |

TCI W132, N10611 GRANT DRIVE GERMANTOWN, WI. 53022
 HG30AW01STC, HG7 W/CNT 30HP, 480/3/60, TYPE 1
 SHT. 1 OF 1