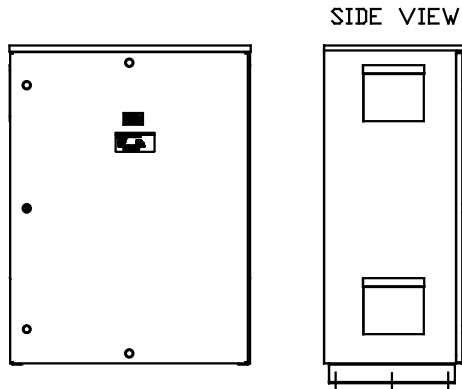
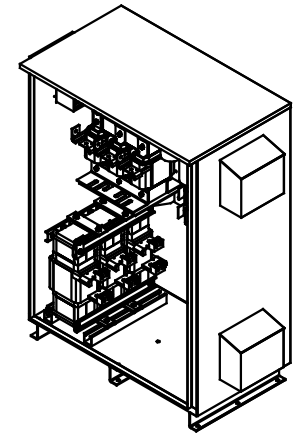


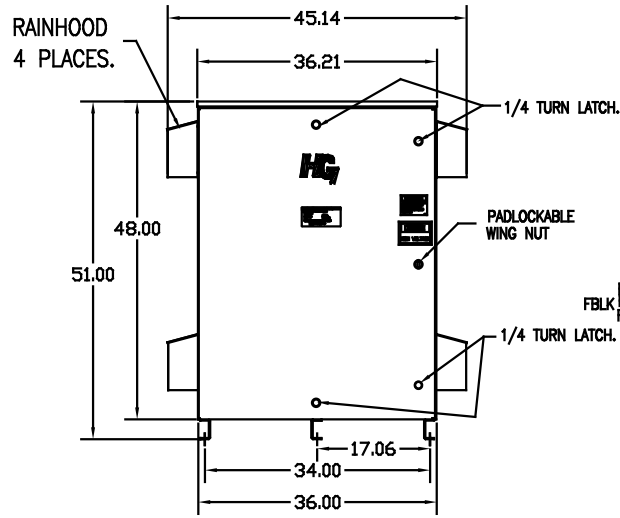
SEE DWG# 26973-1 FOR SCHEMATIC  
 CUSTOMER IS RESPONSIBLE FOR INSTALLATION  
 TO MEET ALL NATIONAL AND LOCAL ELECTRICAL CODES.

NOTE: USE ONLY HUBS OR FITTINGS THAT COMPLY  
 WITH UL514B FOR TYPE 3R ENCLOSURES.

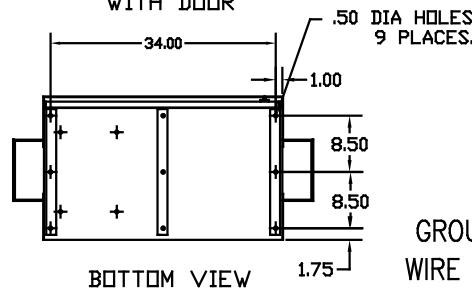


SIDE VIEW

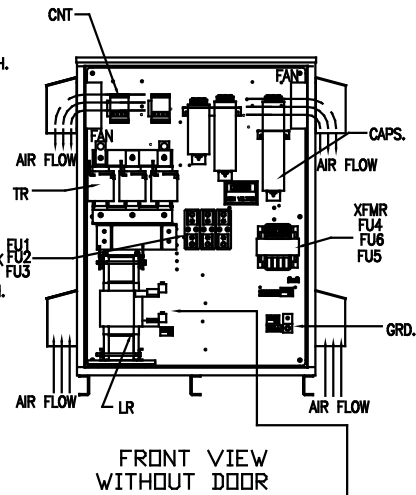
INSIDE DOOR



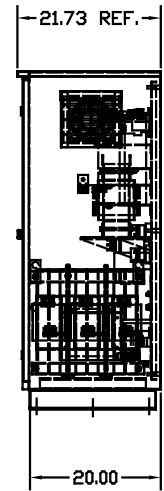
FRONT VIEW WITH DOOR



BOTTOM VIEW



FRONT VIEW WITHOUT DOOR



SIDE VIEW

L1 L2 L3 T1 T2 T3

SUGGESTED CUSTOMER WIRE ENTRY AND EXIT LOCATION

GROUND LUG:  
 WIRE RANGE—ONE 600MCM-4  
 TWO 250MCM-1/0  
 TIGHTENING TORQUE 500 IN-LB.

CUSTOMER CONNECTION OUTPUT:  
 WIRE RANGE—  
 TWO 350MCM-4  
 TIGHTENING TORQUE 275 IN-LB.

| SYMBOL                  | TCI PART NUMBER |
|-------------------------|-----------------|
| LR                      | KDRX41T         |
| TR                      | KTR90C65HG      |
| 20 KVAR CAP. (2 PLACES) | KCAP20C6B       |
| 15 KVAR CAP. (2 PLACES) | KCAP15C6B       |
| 10 KVAR CAP. (2 PLACES) | KCAP10C6B       |
| XFMR.                   | 24389           |
| Fu1,2,3                 | 11170           |
| Fu4,6                   | 13697           |
| Fu5                     | 16987           |
| CNT                     | 22980           |

UNIT SPECIFICATIONS:

| KVAR            | HARMONIC             | VOLT | HZ | PHASE | HP  |
|-----------------|----------------------|------|----|-------|-----|
| 90              | 5TH                  | 600  | 60 | 3     | 300 |
| ENCLOSURE       | TYPE 3R- COLOR WHITE |      |    |       |     |
| FEATURES        | CONTACTOR            |      |    |       |     |
| APPROX.WT. LBS. | 744                  |      |    |       |     |

| NO | REVISION | DATE | BY | TOLERANCES EXCEPT AS NOTED DECIMAL | XX ±.12<br>XXX±.06<br>FUNCTIONAL ± 1/32<br>ANGULAR ± 1/2° | SCALE | DATE | APPROVAL | DATE | APPROVAL | DATE | APPROVAL |
|----|----------|------|----|------------------------------------|---|-------|------|----------|------|----------|------|----------|
|    |          |      |    |                                    |   |       |      |          |      |          |      |          |

**TCI** 7878 N. 86th STREET  
 MILWAUKEE, WI 53224

HG300CW03STC, 300HP  
 600/3/60 UL TYPE 3R

DRW BY DSW DATE 03/02/09 DWG. NO. 103700DG  
 SCALE TO FIT APPROVAL C