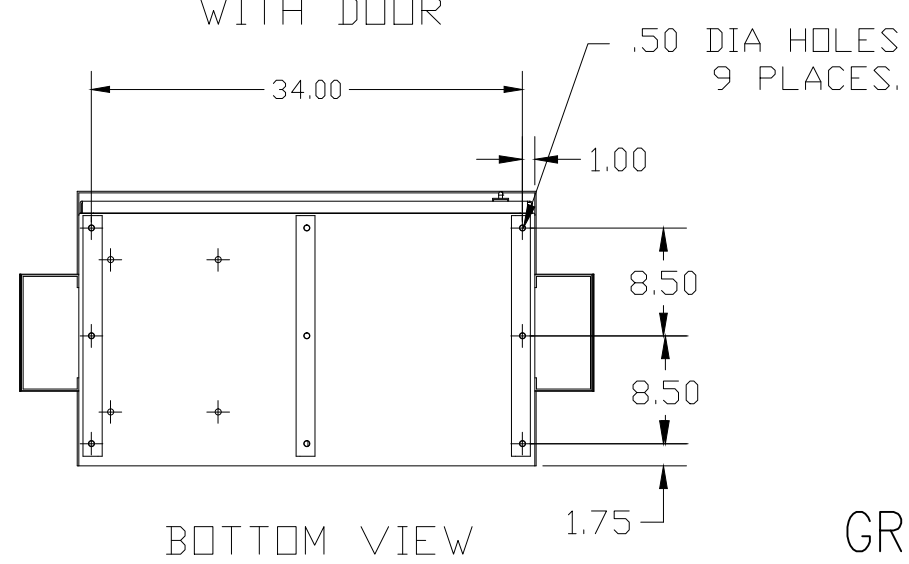
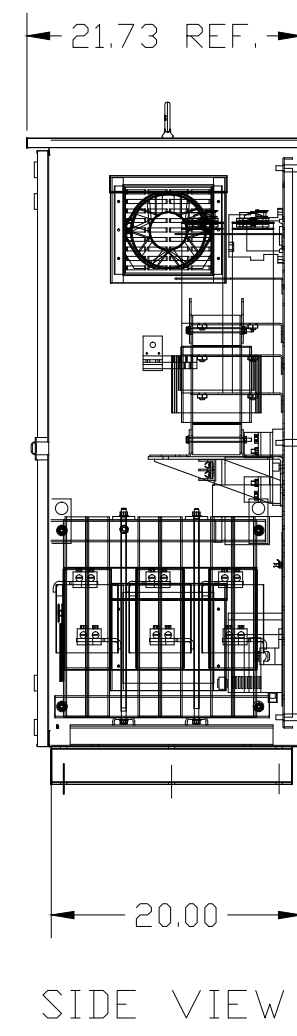
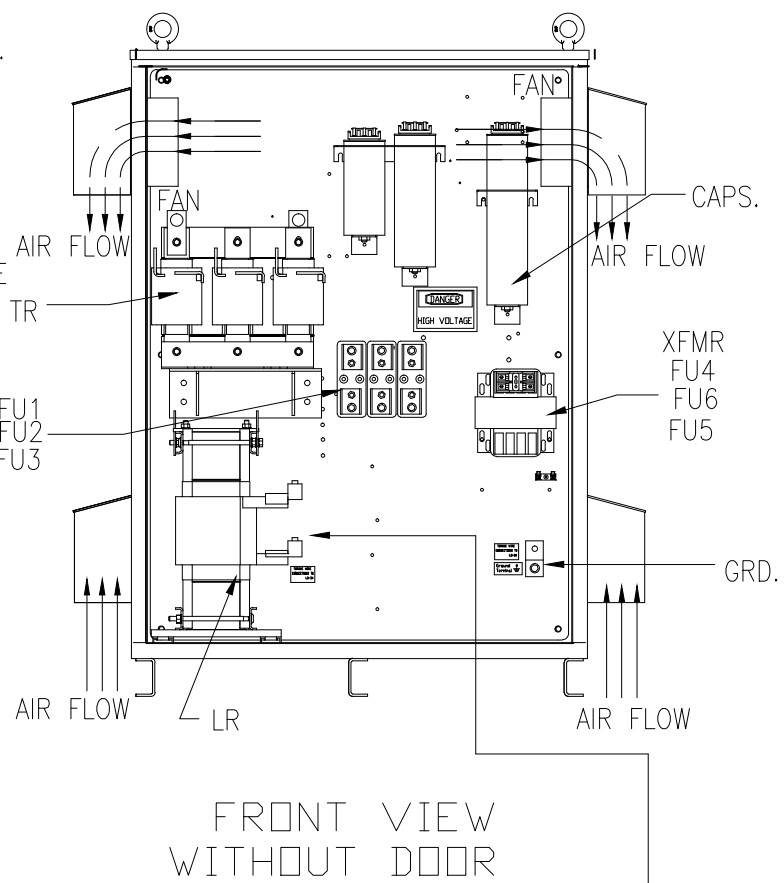
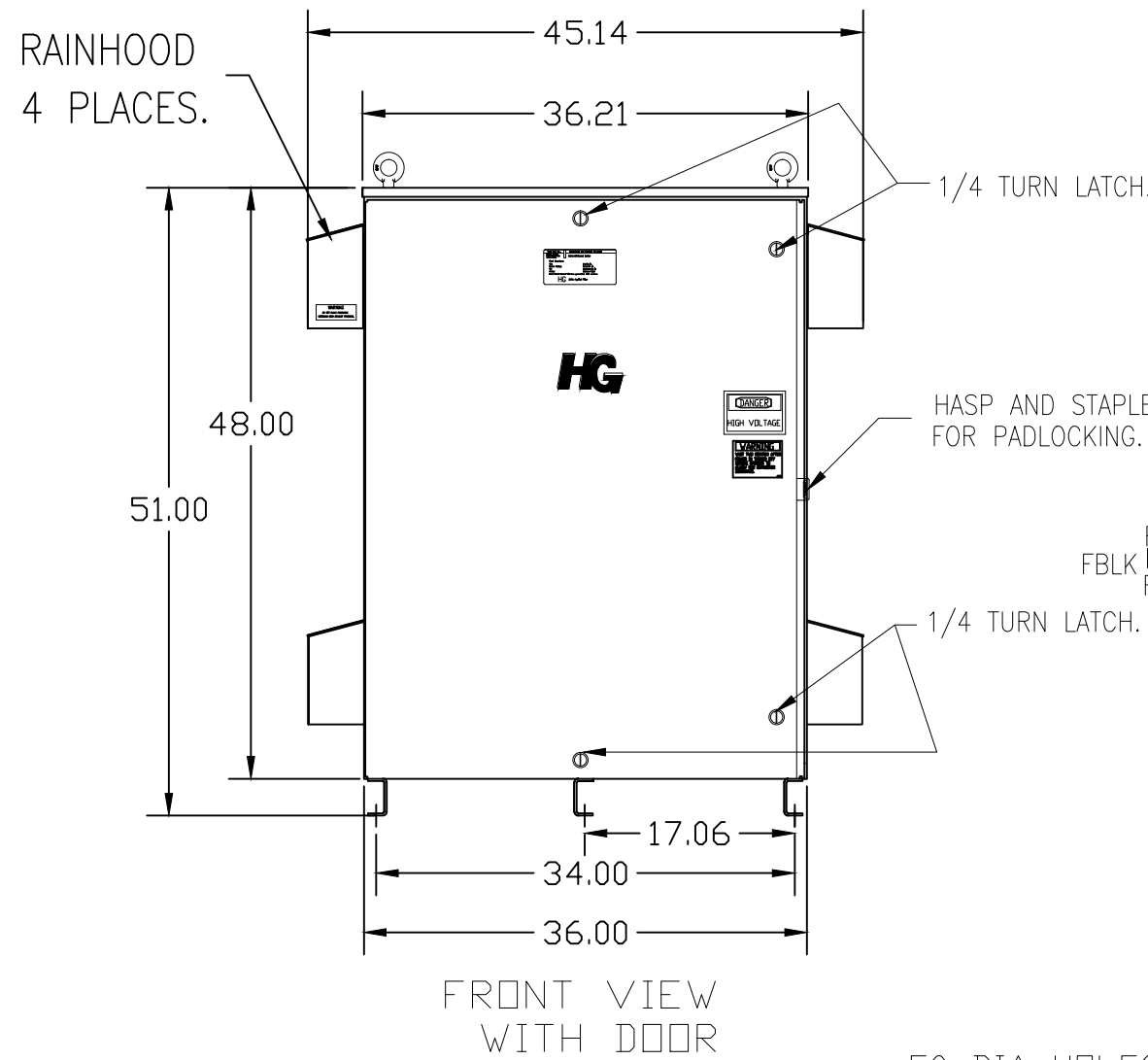
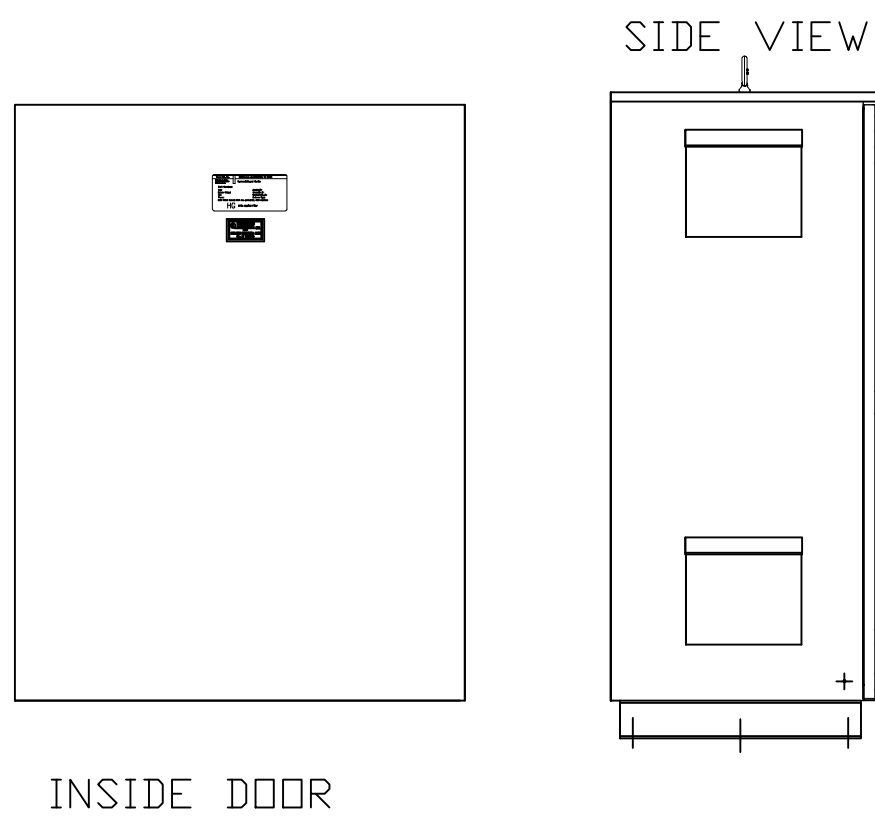
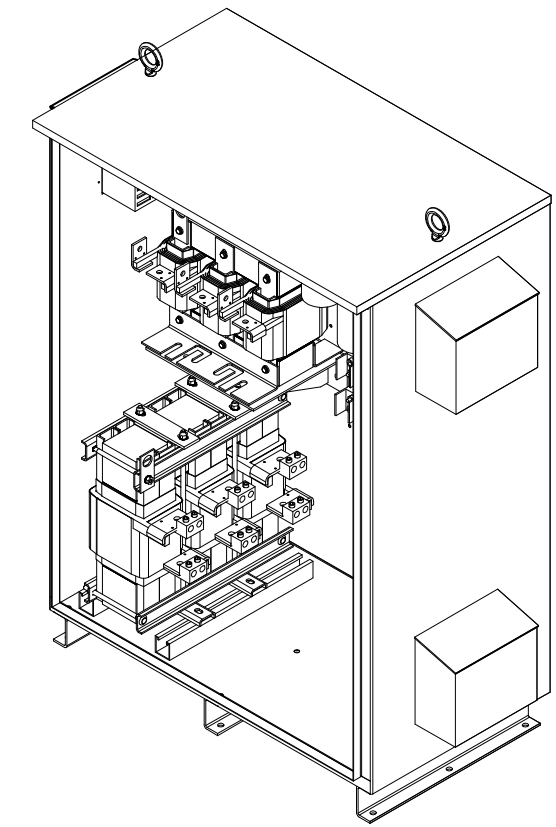
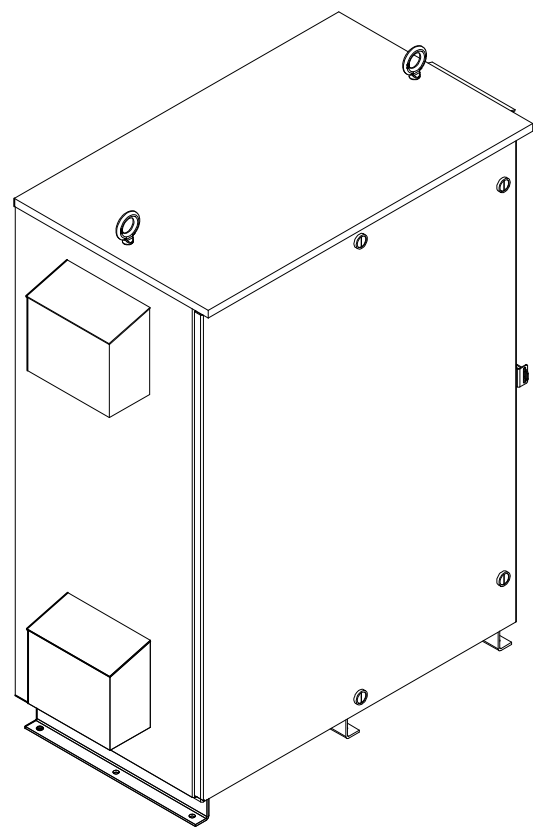


SEE DWG# 26972-2 FOR SCHEMATIC



SYMBOL	TCI PART NUMBER
LR	KDRX41T
TR	KTR90C65HG
20 KVAR CAP. (2 PLACES)	KCAP20C6B
15 KVAR CAP. (2 PLACES)	KCAP15C6B
10 KVAR CAP. (2 PLACES)	KCAP10C6B
XFMR.	24389
Fu1;2;3	11170
Fu4,6	13697
Fu5	16987

NOTE: USE ONLY HUBS OR FITTINGS THAT COMPLY WITH UL514B FOR TYPE 3R ENCLOSURES.

CUSTOMER IS RESPONSIBLE FOR INSTALLATION TO MEET ALL NATIONAL AND LOCAL ELECTRICAL CODES.

GROUND LUG:  
WIRE RANGE—ONE 600MCM-4  
TWO 250MCM-1/0  
TIGHTENING TORQUE 500 IN-LB.

CUSTOMER CONNECTION OUTPUT:  
WIRE RANGE—  
TWO 350MCM-4  
TIGHTENING TORQUE 275 IN-LB.

UNIT SPECIFICATIONS:					
KVAR	HARMONIC	VOLT	HZ	PHASE	HP
90	5TH	600	60	3	300
ENCLOSURE		TYPE 3R- COLOR WHITE			
APPROX.WT. LBS.		736			

TCI, LLC CLAIMS PROPRIETARY RIGHTS IN THE MATERIAL HEREIN DISCLOSED. IT IS SUPPLIED WITHOUT PREJUDICE TO ANY PATENT RIGHTS OF TCI AND MAY NOT BE REPRODUCED OR USED TO MANUFACTURE ANYTHING SHOWN THEREIN WITHOUT WRITTEN PERMISSION FROM TCI.	TOLERANCES (EXCEPT AS NOTED)	W132 N10611 Grant Drive Germantown, WI 53022 HG300CW03ST, 300HP 600/3/60 UL TYPE 3R						
	DECIMAL							
	FRACTIONAL							
	ANGULAR							
NO	REVISION	DATE	BY	SCALE	SIZE	DRN. BY	DATE	DWG. NO.
A	2641 ADD EYEBOLTS	10/13/05	DSW	TO FIT	C	DSW	3/02/09	103645
SHT. 1 OF 1								