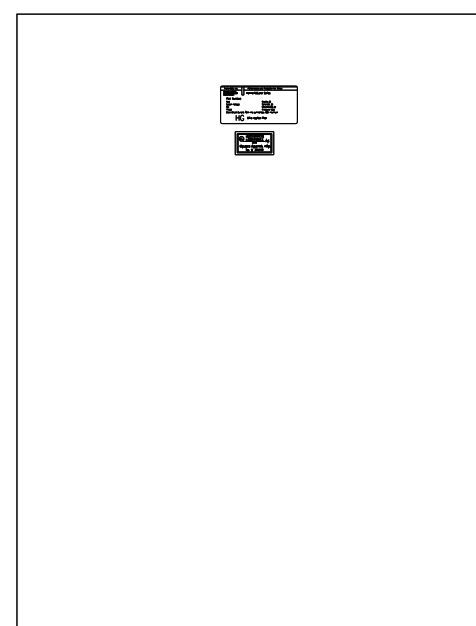
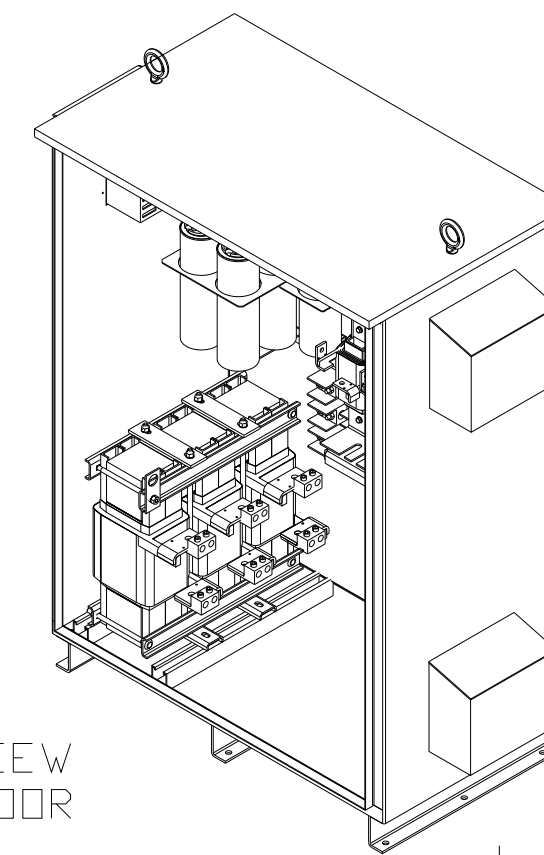


CUSTOMER IS RESPONSIBLE FOR INSTALLATION TO MEET ALL NATIONAL AND LOCAL ELECTRICAL CODES.

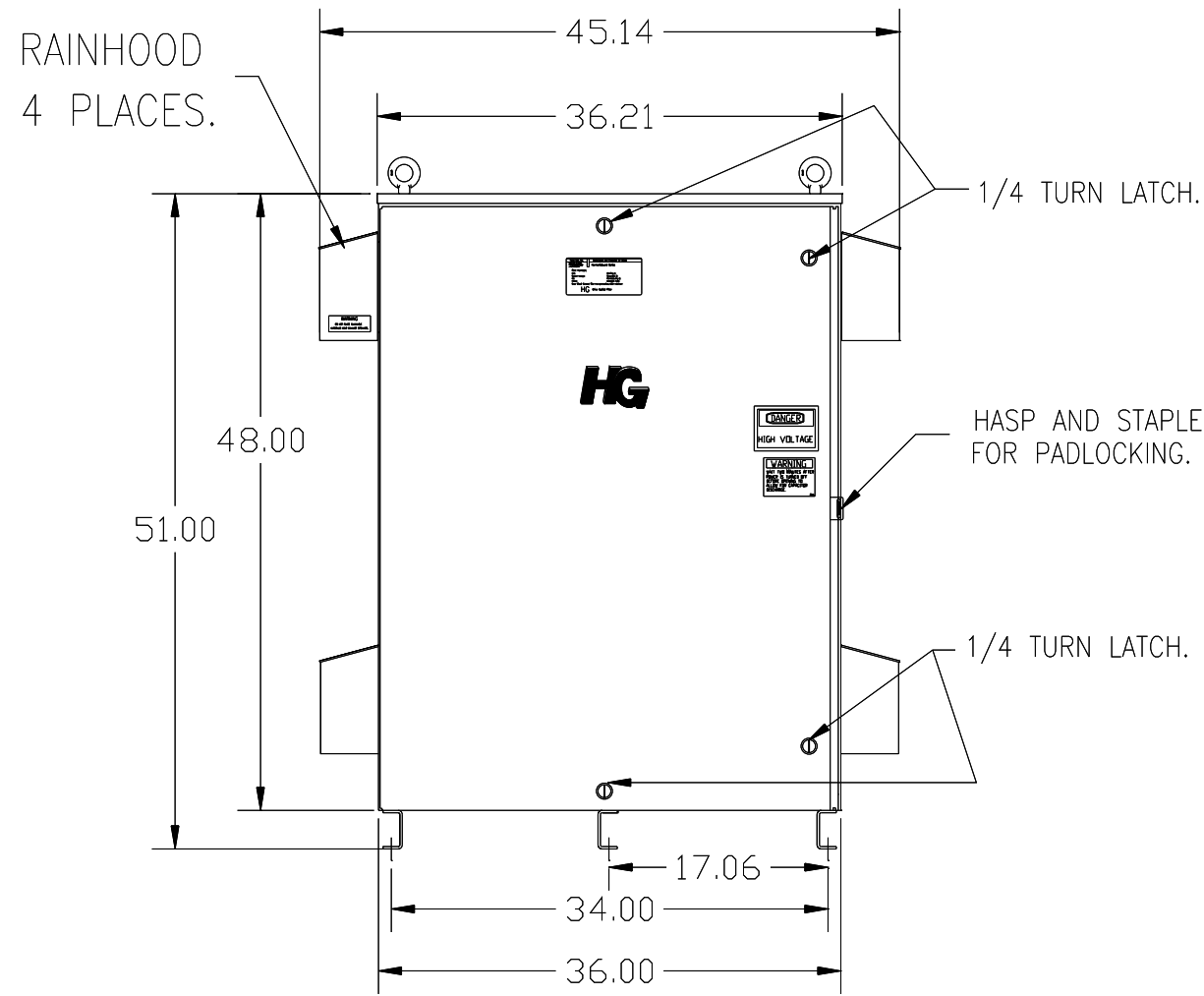
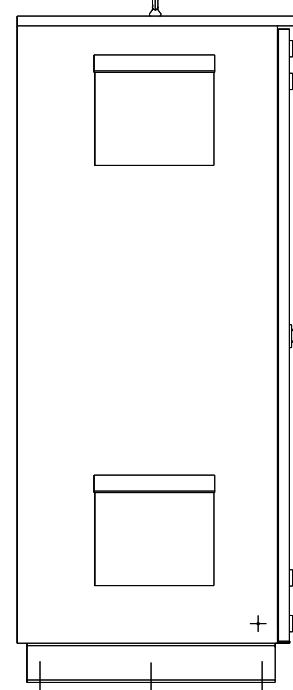
NOTE: USE ONLY HUBS OR FITTINGS THAT COMPLY WITH UL514B FOR TYPE 3R ENCLOSURES.

SEE DWG# 26753 FOR SCHEMATIC

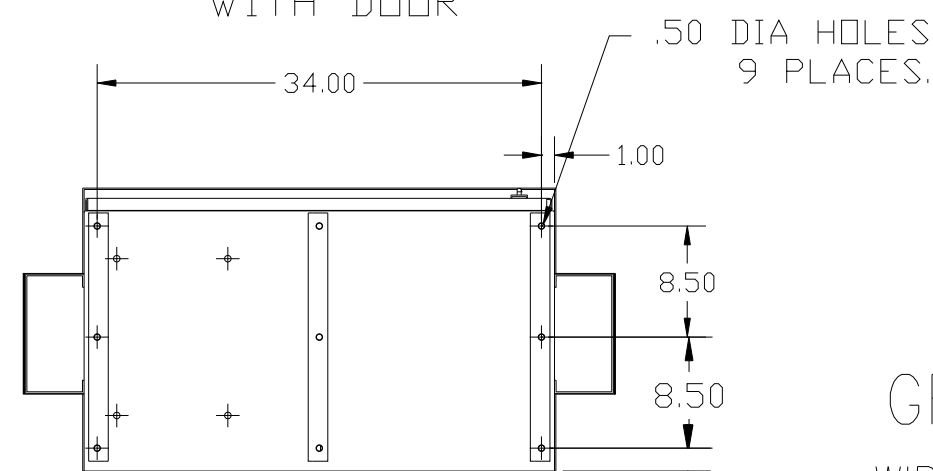


INSIDE DOOR

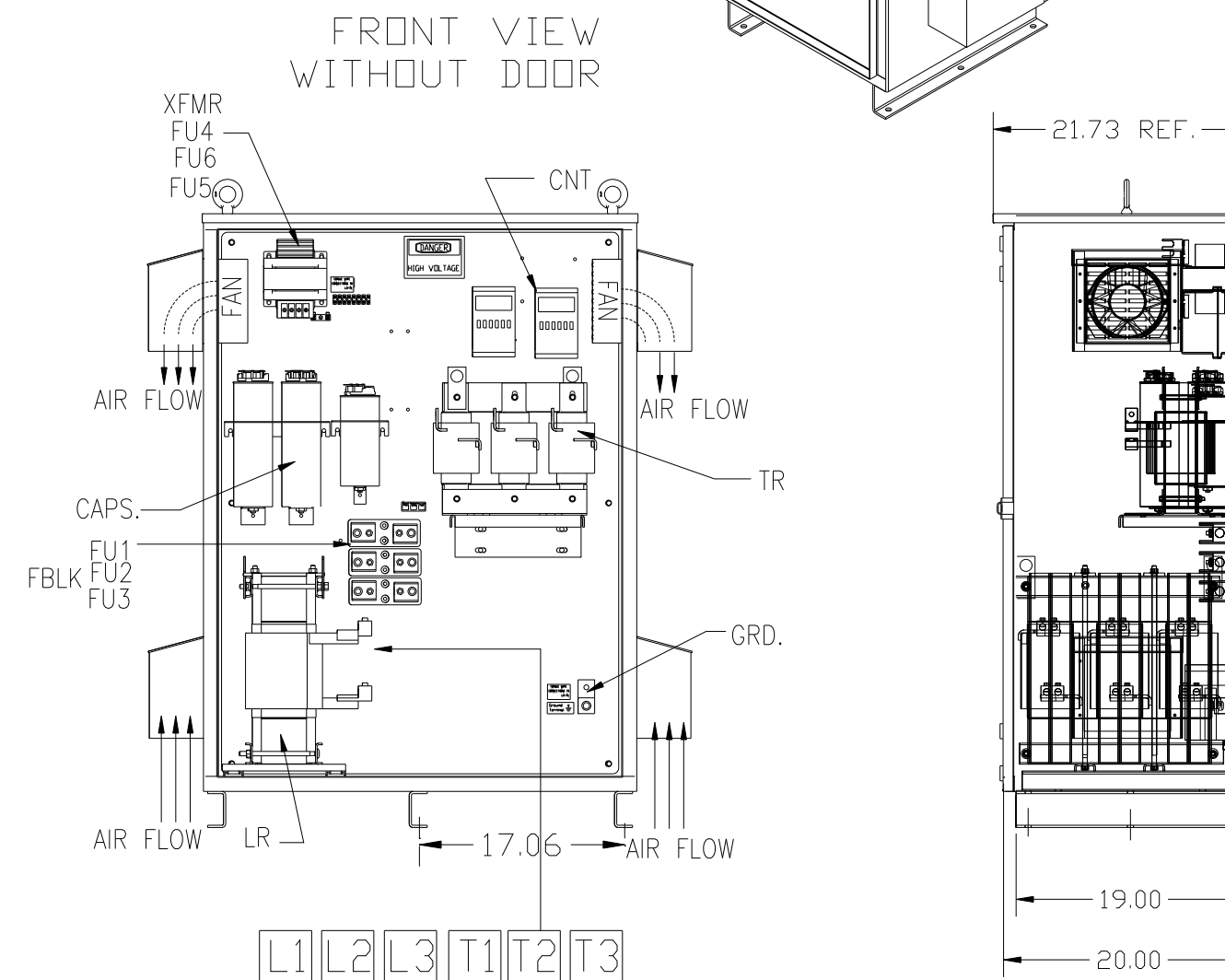
SIDE VIEW



FRONT VIEW WITH DOOR



BOTTOM VIEW



SUGGESTED CUSTOMER WIRE ENTRY AND EXIT LOCATION

SYMBOL	TCI PART NUMBER
LR	KDRX1T
TR	KTR90A65HG
CAP1 ,2 ,3 ,4. (20 KVAR)	KCAP20A6B
CAP5. (10 KVAR)	KCAP10A6B
CONTACTORS	19246
XFMR.	23899
Fu1a;2a;3a	11175
Fu4,6	14106
Fu5	23977

GROUND LUG:  
WIRE RANGE-ONE 600MCM-4  
TWO 250MCM-1/0  
TIGHTENING TORQUE 500 IN-LB.

CUSTOMER CONNECTIONS:  
WIRE RANGE-TWO 350MCM-4  
TIGHTENING TORQUE 275 IN-LB.

UNIT SPECIFICATIONS:					
KVAR	HARMONIC	VOLT	HZ	PHASE	HP
90	5TH	480	60	3	300
ENCLOSURE		TYPE 3R-COLOR WHITE			
FEATURES		W/CONTACTOR			
APPROX.WT. LBS.		620			

				TOLERANCES (EXCEPT AS NOTED)	TCI 7878 N. 86th STREET MILWAUKEE, WI 53224	
				DECIMAL		
				.XX ± .12		
				.XXX ± .06		
C	2702 RESTORE ORIG. FUSEBLK.	9/2/10	RJC	FRACTIONAL ± 1/32	HG300AW03STC, 300HP 480/3/60 UL TYPE 3R	
B	2702 RVSD FUSEBLK&FUSE	9/2/10	RJC	ANGULAR ± 1/2°	DRN BY DSW DATE 09/15/08 DWG. NO. 103680DG	
A	2641 ADD EYEBOLTS	10/15/09	DSW	SCALE TO FIT	APRVD. C SHT. 1 OF 1	
NO	REVISION	DATE	BY			