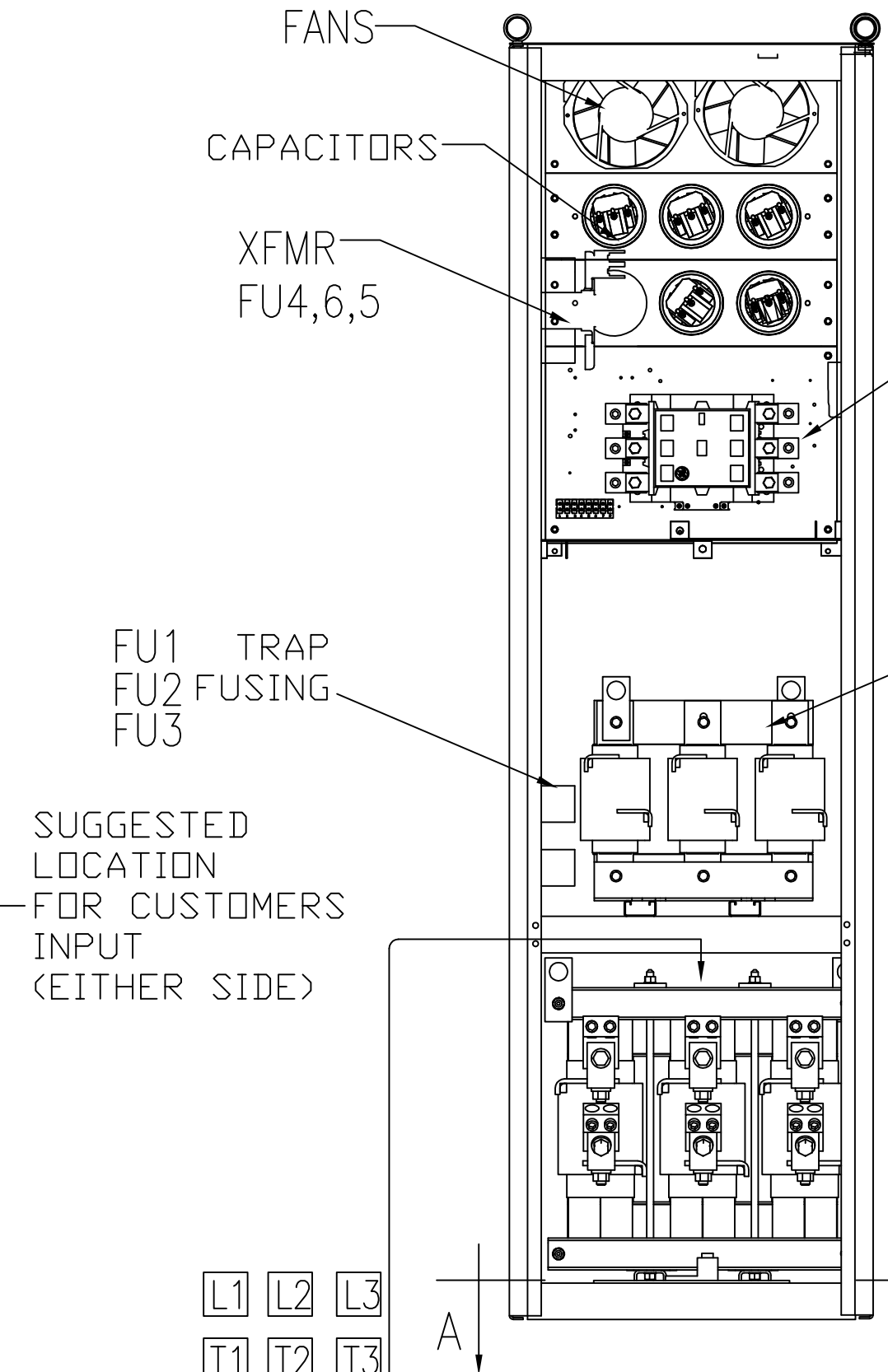
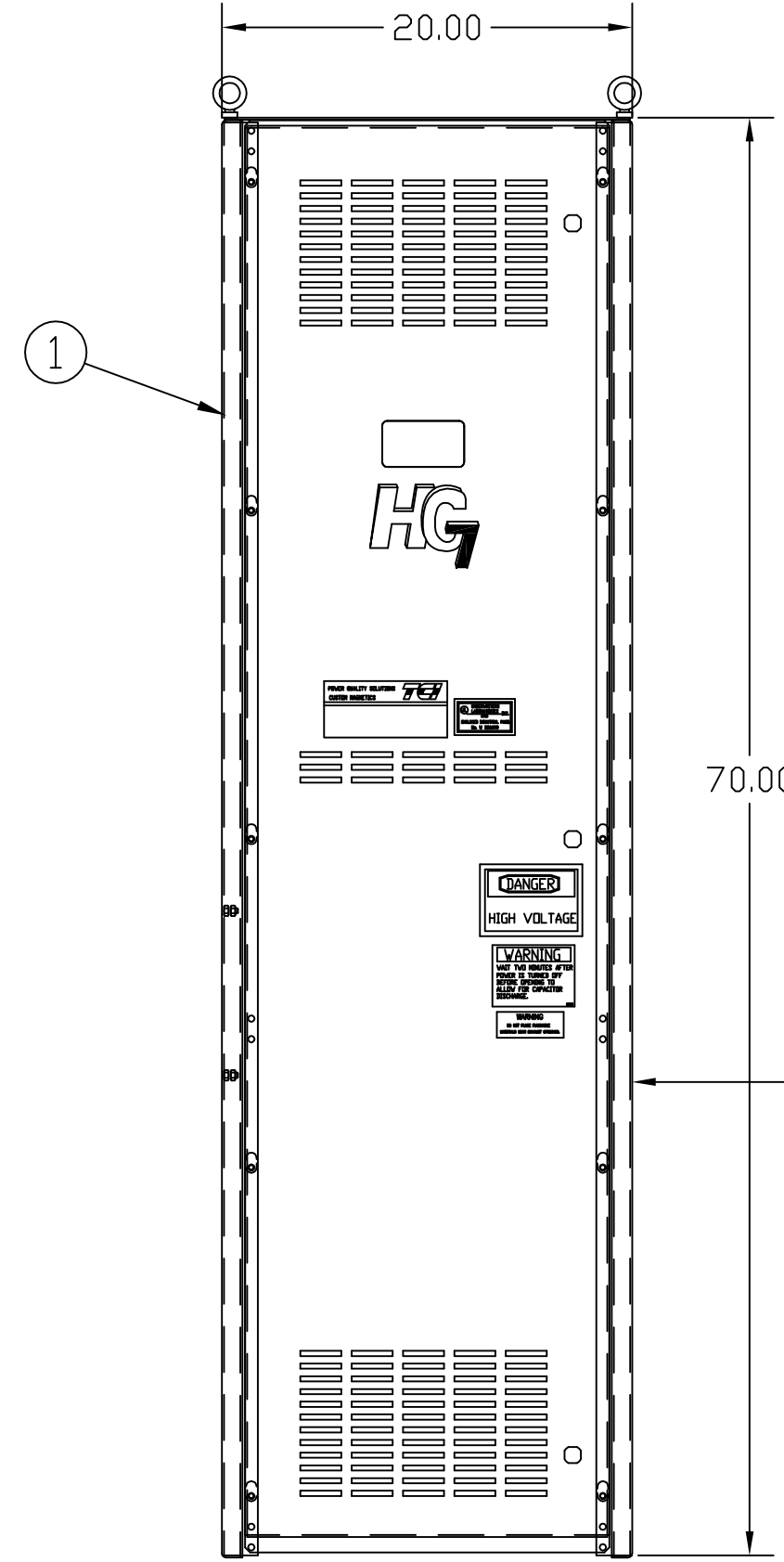
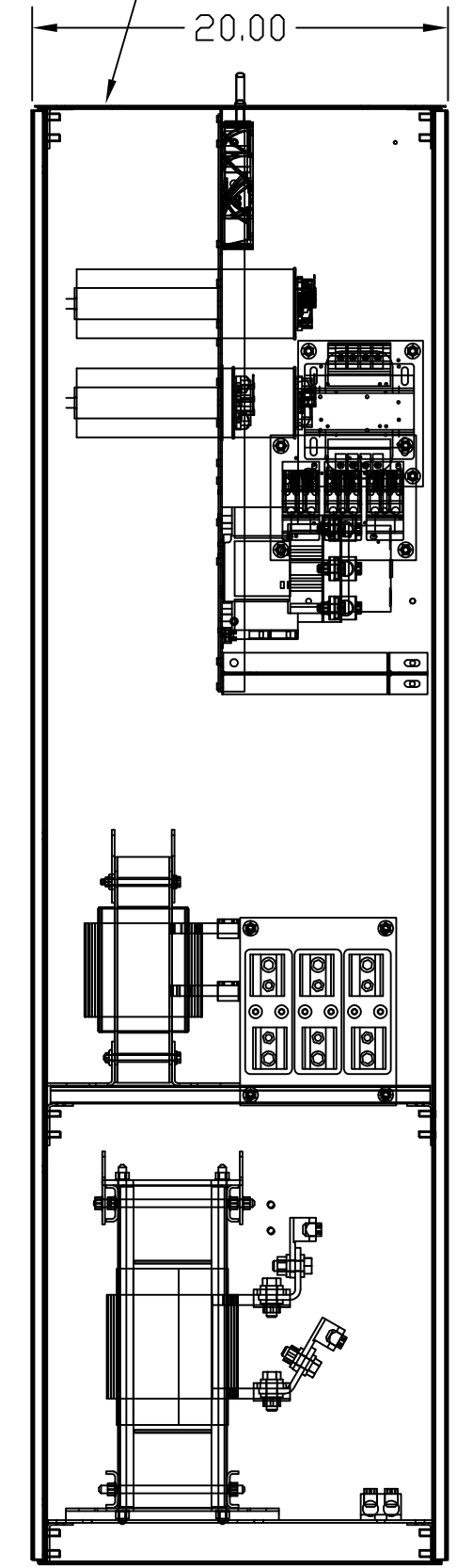
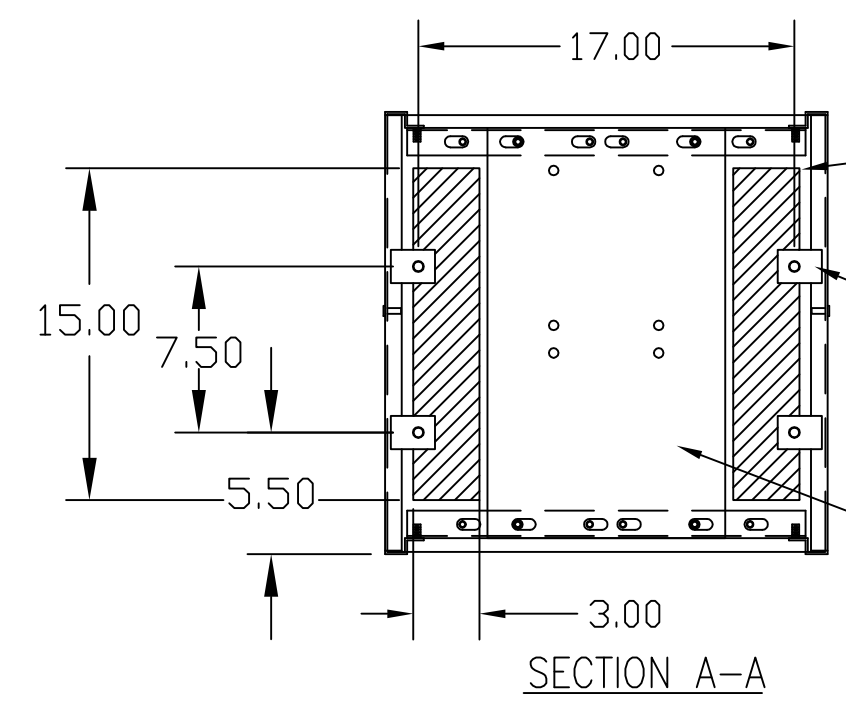
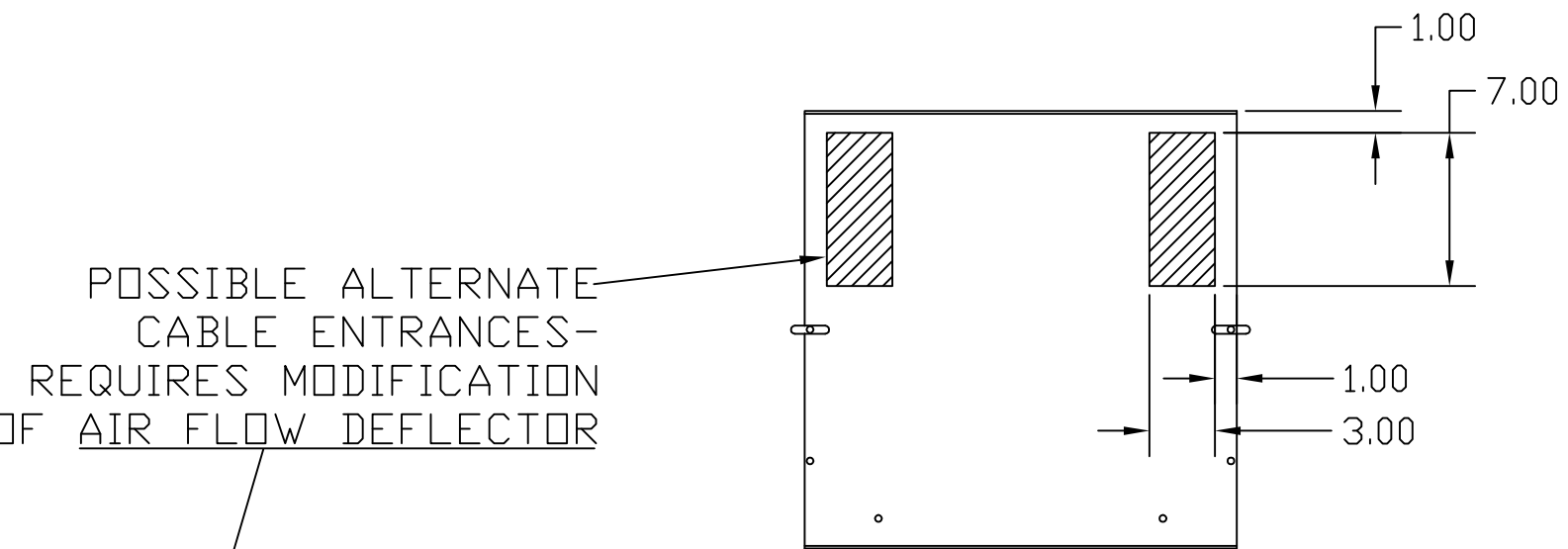
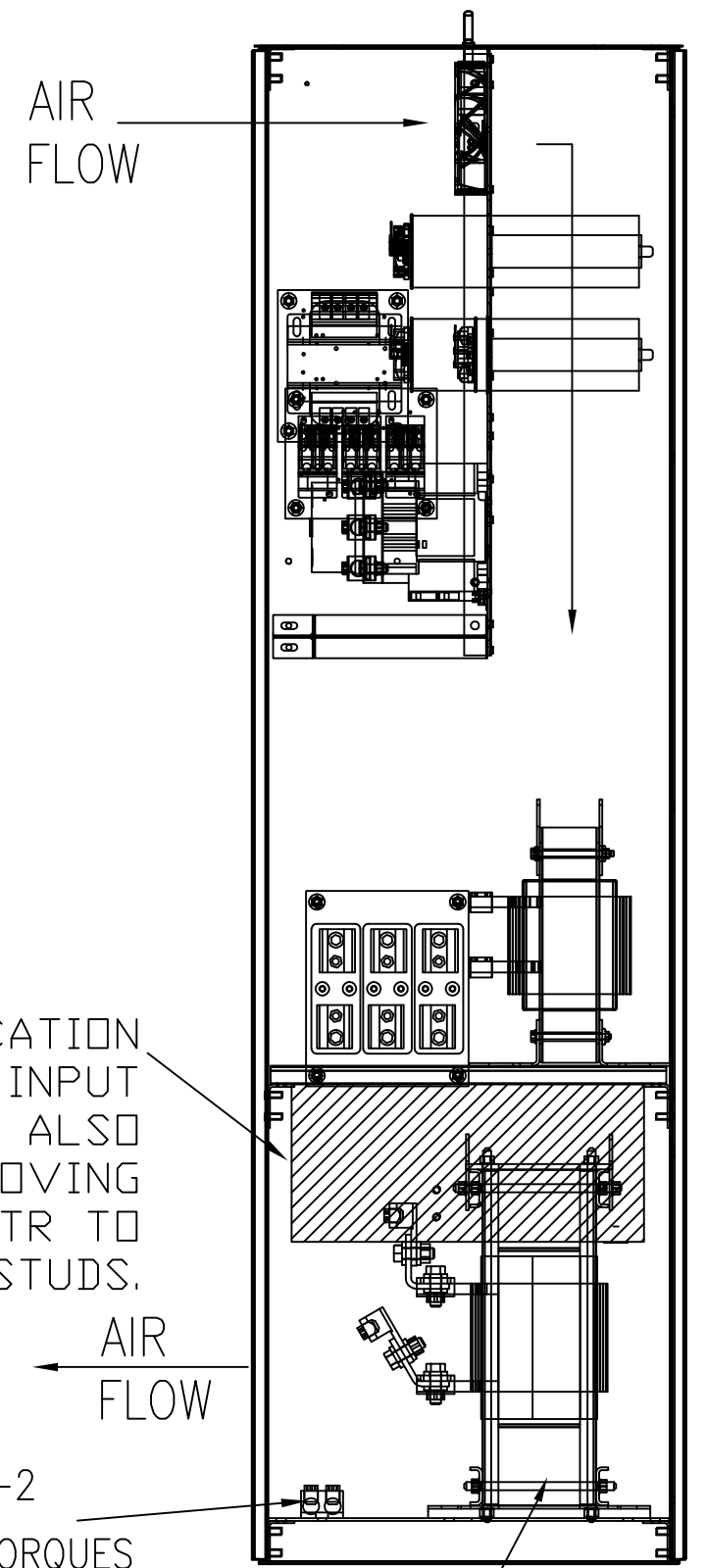


HG300AW01STC	
COMPONENTS	
LINE REACTOR LR	X
TRAP REACTOR TR	X
CAPACITOR CAP	X
TRAP FUSING FU1,2,3	X
TRANSFORMER XFMR	X
XFMR PRIMARY FUSING FU4,6	X
XFMR SECONDARY FUSING FU5	X
CONTACTOR CNT	X

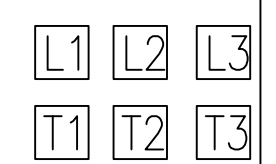


SUGGESTED LOCATION FOR CUSTOMERS INPUT OPPOSITE SIDE ALSO AVAILABLE BY MOVING FUSES AND TR TO EXISTING MOUNTING STUDS.

GROUND LUG:
WIRE RANGE-TWO 350MCM-2
SEE IOM MANUAL FOR WIRE TORQUES



CUSTOMER CONNECTIONS:
WIRE RANGE-TWO 350MCM-2
SEE IOM MANUAL FOR WIRE TORQUES



UNIT SPECIFICATIONS:					
KVAR	HARMONIC	VOLT	HZ	PHASE	HP
90	5TH	480	60	3	300
ENCLOSURE	NEMA 1				
FEATURES	W/CONTACTOR				
APPROX.WT. LBS.	600				

FOR SCHEMATIC SEE DWG# 26690-1

CUSTOMER IS RESPONSIBLE FOR INSTALLATION TO MEET ALL NATIONAL AND LOCAL ELECTRICAL CODES.

TCI, LLC CLAIMS PROPRIETARY RIGHTS IN THE MATERIAL HEREIN DISCLOSED. IT IS SUPPLIED WITHOUT PREJUDICE TO ANY PATENT RIGHTS OF TCI AND MAY NOT BE REPRODUCED OR USED TO MANUFACTURE ANYTHING SHOWN THEREIN WITHOUT WRITTEN PERMISSION FROM TCI.				TOLERANCES (EXCEPT AS NOTED) DECIMAL	W132 N10611 Grant Drive Germantown, WI 53022 HG300AW01STC, HG7, 300HP 480/3/60, W/CONTACTOR	
	D	3267 GE CNT CHG.	3/30/16	DSW		.XX ±.25
	C	3135 ENCLOSURE UPDATE	12/2/14	DSW		.XXX ±.10
	NO	REVISION	DATE	BY		ANGULAR ± 1°

DRN. BY	DATE	DWG. NO.
DSW	8/04/08	103515DG
SCALE	SIZE	SHT. 1 OF 1
TO FIT	C	