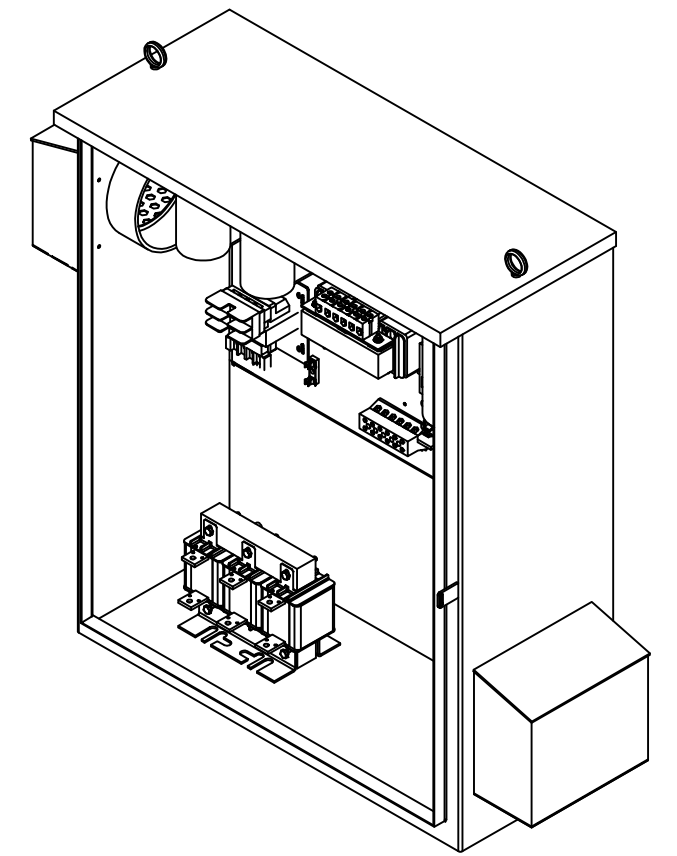
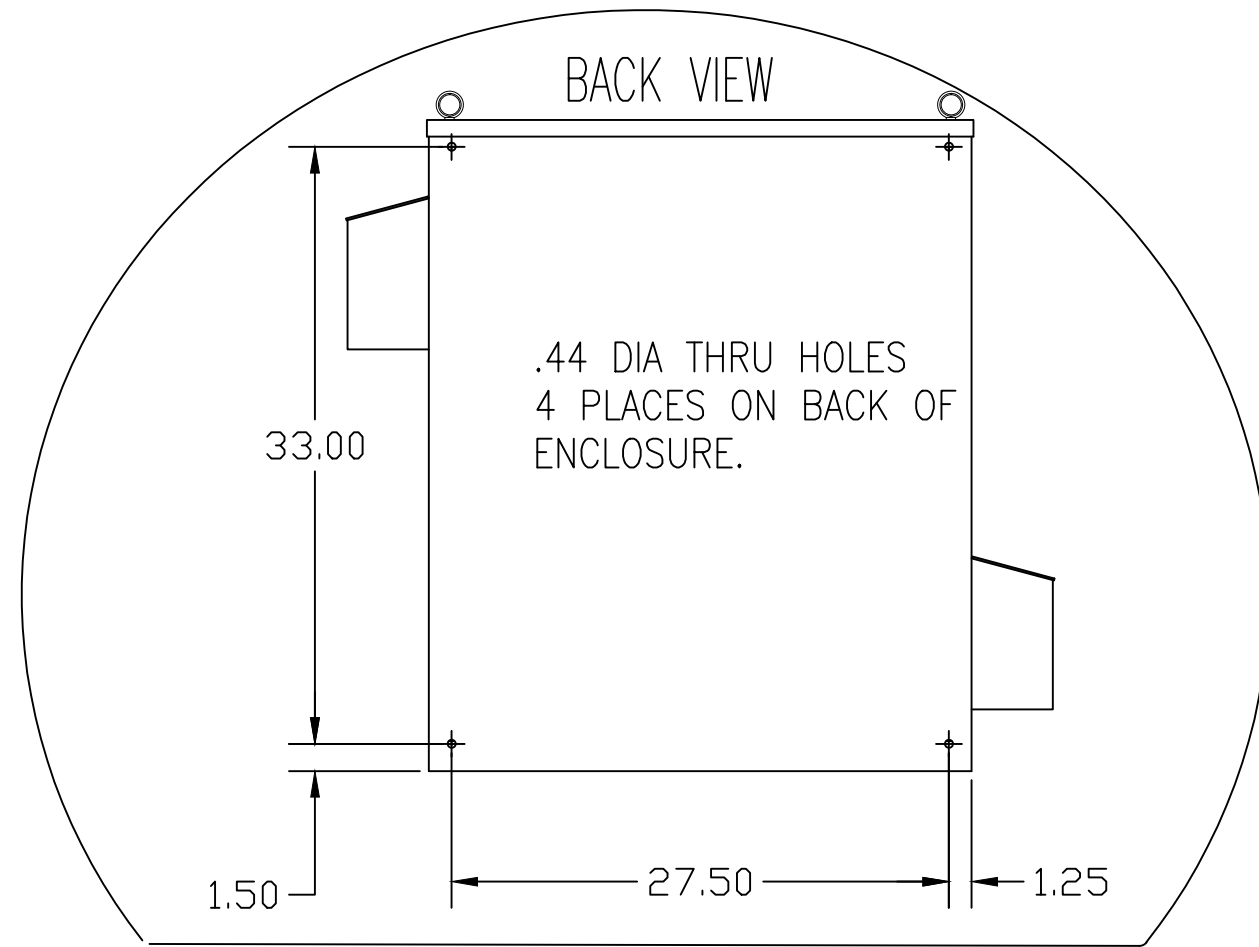
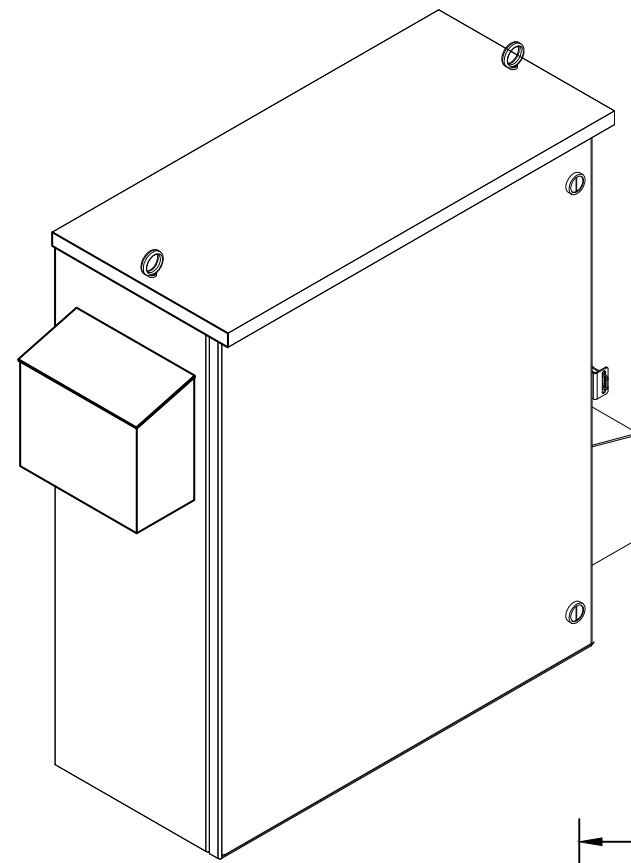


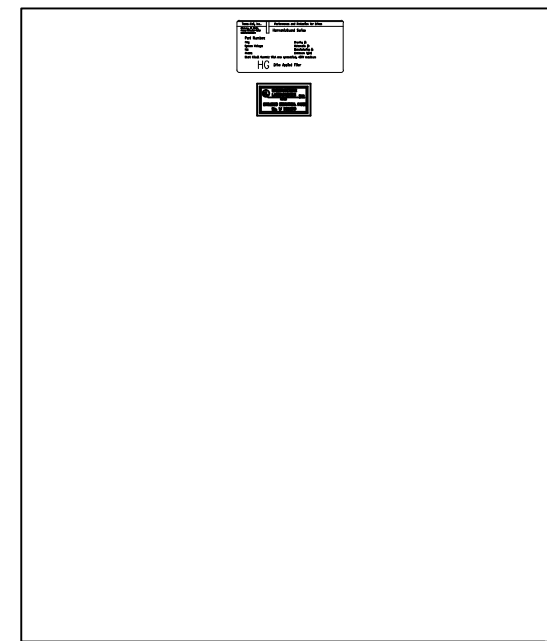
CUSTOMER CONNECTIONS

L1 L2 L3 T1 T2 T3
AND GROUND LUG.

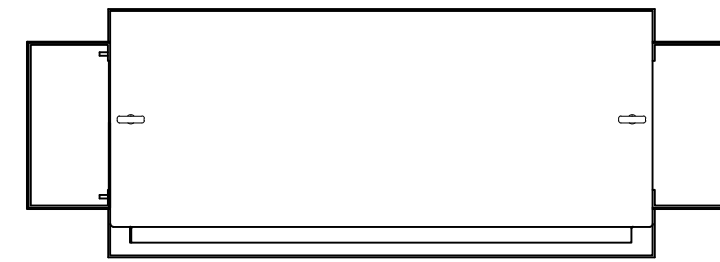
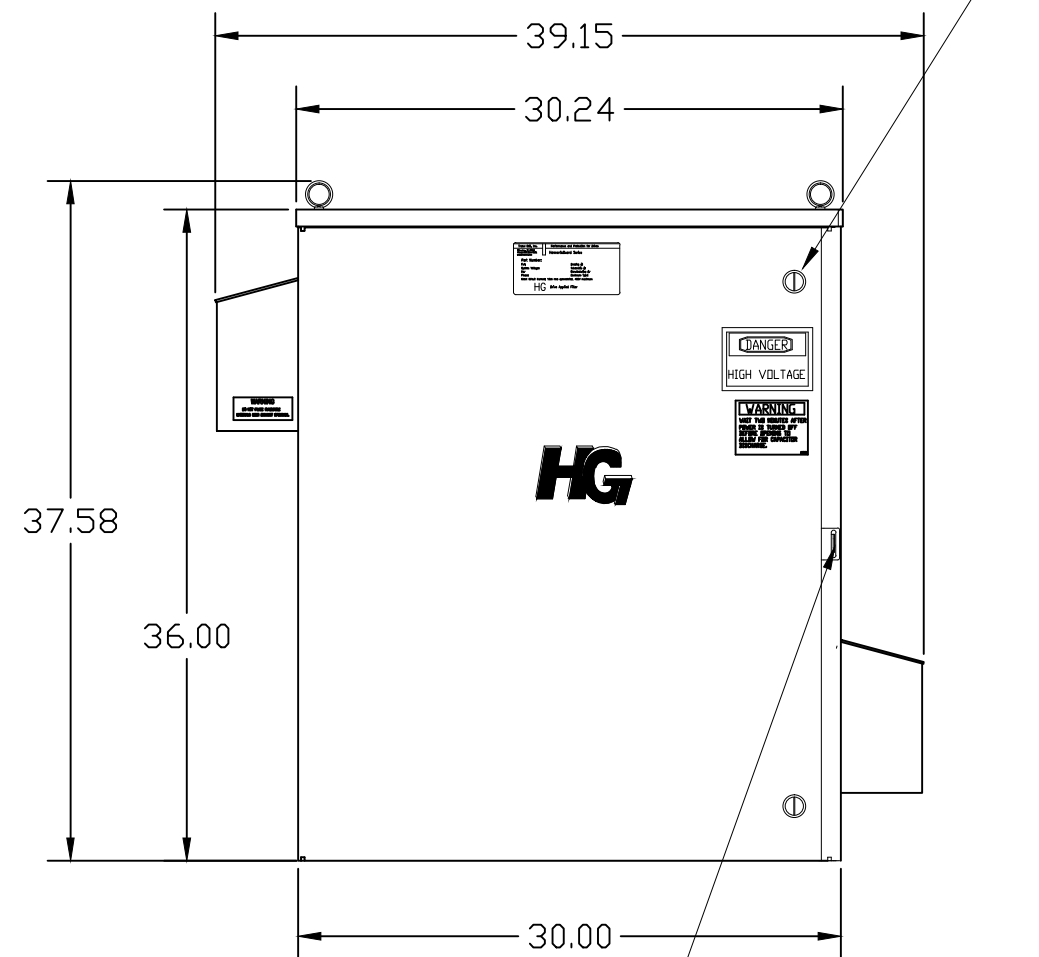
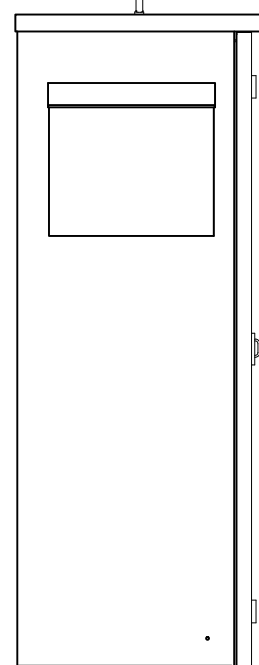
WIRE SIZE (AWG)	RATED TORQUE (IN-LBS)
2/0-3	50
4-6	45
8	40
10-14	35



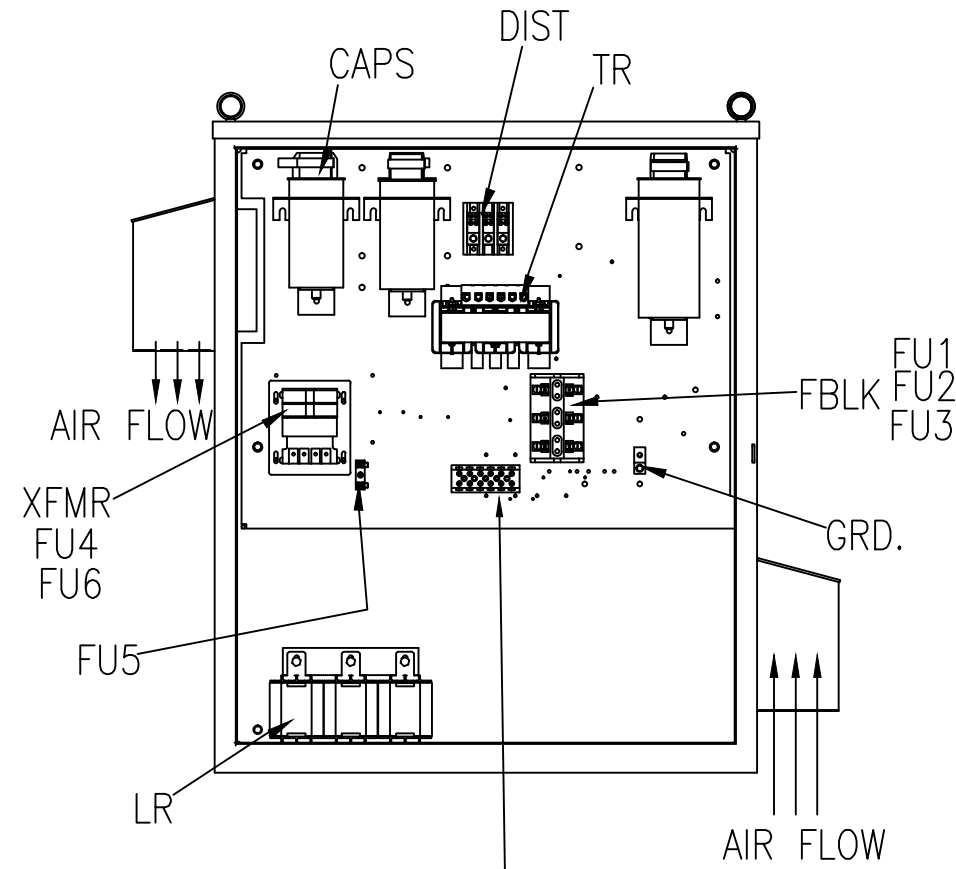
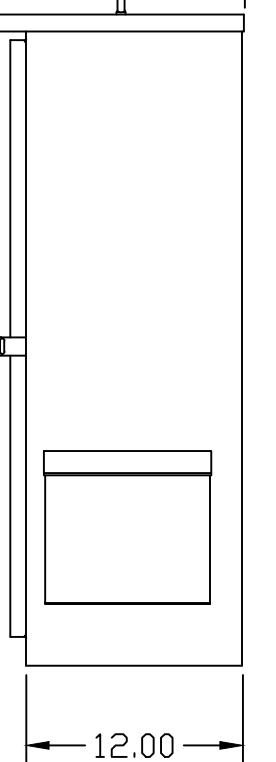
SIDE VIEW



INSIDE DOOR



13.73 REF.
SIDE VIEW



L1 L2 L3 T1 T2 T3

SUGGESTED CUSTOMER WIRE ENTRY AND EXIT LOCATION

SEE DWG# 26901 FOR SCHEMATIC

NOTE: USE ONLY HUBS OR FITTINGS THAT COMPLY WITH UL514B FOR TYPE 3R ENCLOSURES.

CUSTOMER IS RESPONSIBLE FOR INSTALLATION TO MEET ALL NATIONAL AND LOCAL ELECTRICAL CODES.

HG25BW03ST	
COMPONENTS	
LINE REACTOR LR	X
TRAP REACTOR TR	X
CAPACITOR CAP	X
TRAP FUSING FU1,2,3	X
XFMR	X
XFMR FU4,6	X
XFMR FU5	X

UNIT SPECIFICATIONS:					
KVAR HARMONIC	VOLT	HZ	PHASE	HP	
8	5TH	240	60	3	25
ENCLOSURE	UL TYPE 3R				
COLOR	WHITE				
APPROX.WT. LBS.	192				

TCI, LLC CLAIMS PROPRIETARY RIGHTS IN THE MATERIAL HEREIN DISCLOSED. IT IS SUPPLIED WITHOUT PREJUDICE TO ANY PATENT RIGHTS OF TCI AND MAY NOT BE REPRODUCED OR USED TO MANUFACTURE ANYTHING SHOWN THEREIN WITHOUT WRITTEN PERMISSION FROM TCI.				TOLERANCES (EXCEPT AS NOTED)	TCI ® W132 N10611 Grant Drive Germantown, WI 53022	
				DECIMAL		
	C	3033 UPDATE LAYOUT	2/24/14	DSW		.XX ±.12
	B	3042 LUG TORQ CHG	2/21/14	BMZ		.XXX±.03
				FRACTIONAL	HG25BW03ST, 25HP 240/3/60 UL TYPE 3R	
A	2641 ADD EYEBOLTS	10/13/09	DSW	± 1/32		
				ANGULAR	DRN. BY DSW DATE 12/22/08 DWG. NO. 103658DG	
NO	REVISION	DATE	BY	± 1/2°	SCALE TO FIT SIZE C SHT. 1 OF 1	