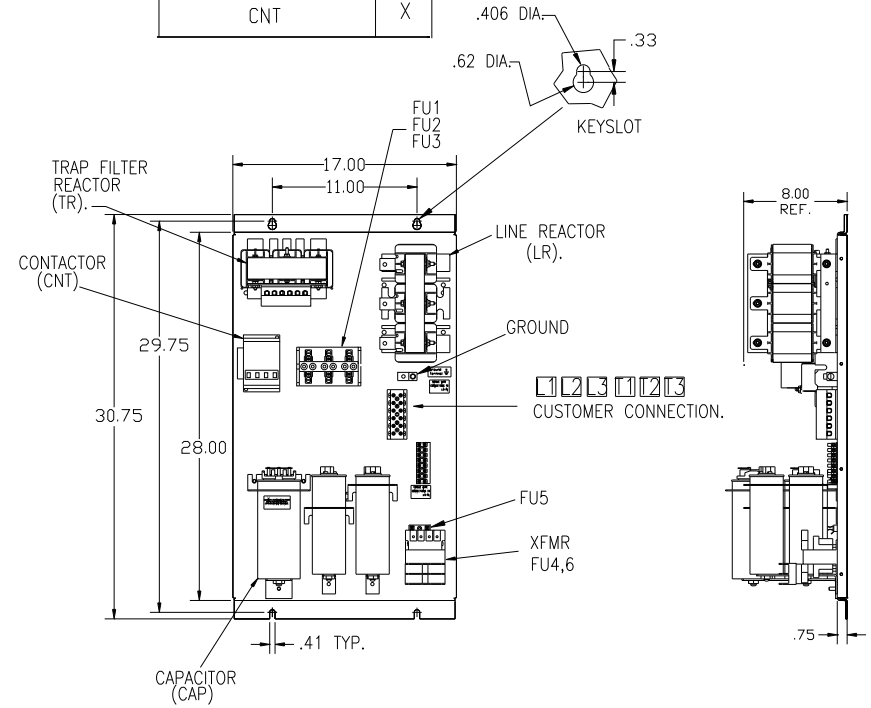


HATCHED AREA(S) ARE SUGGESTED CUSTOMER WIRE ENTRANCE AND EXIT LOCATIONS (BOTTOM ENTRANCE ALTERNATE-CONSULT TC)

HG25BW01STC	
COMPONENTS	
LINE REACTOR LR	X
TRAP REACTOR TR	X
CAPACITOR CAP	X
TRAP FUSING FU1,2,3	X
XFMR	X
XFMR FU4,6	X
XFMR FU5	X
CNT	X

UNIT SPECIFICATIONS:					
KVAR	HARMONIC	VOLT	HZ	PHASE	HP
8	5TH	240	60	3	25
ENCLOSURE		NEMA 1			
		WITH CONTACTOR			
APPROX.WT. LBS.		150			



CUSTOMER CONNECTIONS



WIRE SIZE (AWG)	RATED TORQUE (IN-LBS)
2/0-3	50
4-6	45
8	40
10-14	35

SEE 26822 FOR SCHEMATIC

CUSTOMER IS RESPONSIBLE FOR INSTALLATION TO MEET ALL NATIONAL AND LOCAL ELECTRICAL CODES.

TOLERANCES (EXCEPT AS NOTED)			
DECIMAL			
			.XX ± .03
			.XXX ± .01
FRACTIONAL			
			± 1/32
ANGULAR			
			± 1/2°

B	3042 LUG TORQ CHG	2/21/14	BMZ	7878 N. 86th STREET MILWAUKEE, WI 53224 <b>HG25BW01STC, 25HP</b> 240/3/60, ENCLOSED, WITH CNT
A	2702 RVSD UL SHIELD	1/30/12	RJC	
NO	REVISION	DATE	BY	DRN BY DSW DATE 10/15/08 DWG. NO. 103592DG SCALE TO FIT APRVD C